



Interim Performance Report

In March 2009, the Kentucky General Assembly passed Senate Bill 1 (SB1) that was subsequently signed into law by the Governor. SB1 calls for a significant overhaul of the state's assessment and accountability system. The new assessment system begins in the spring of 2012. The school years of 2008-2009, 2009-2010 and 2010-2011 are described in SB1 as an interim period. This three-year period allows Kentucky to develop the new assessment system and to carry on state and federal testing requirements.

The Interim Performance Report includes the Kentucky Core Content Test (KCCT) in Reading (grades 3-8 and 10), Mathematics (grades 3-8 and 11), Science (grades 4, 7 and 11), Social Studies (grades 5, 8 and 11) and Writing On-Demand (grades 5, 8 and 12). The KCCT is based on the Kentucky Core Content for Assessment (Version 4.1) and contains multiple choice and open response questions. The Writing On-Demand test uses writing prompts that require students to craft a piece of writing in a 60 minute period.

The KCCT is developed under the direction of content advisory committees of Kentucky educators who draft, review and select test questions. All test items are reviewed by a bias review committee to enhance the fairness of items for all Kentucky students.

The KCCT continues to fulfill the requirements of the federal statute known as the No Child Left Behind Act of 2001. A separate accountability report for No Child Left Behind (NCLB) is published by the Kentucky Department of Education.

The Interim Performance Report focuses entirely on the five state-required content areas and provides data for schools or districts. The data in this report is not used directly for state accountability; although, these results can fulfill the requirements of Senate Bill 168 from 2002 and may be used by schools or districts for their own local accountability needs.

Performance standards are based on descriptions of Novice, Apprentice, Proficient and Distinguished (NAPD) student performance levels specific to the content area and grade being assessed. The performance standards, in conjunction with Kentucky's Core Content for Assessment, should allow instruction to better focus on the content area to be taught and on how well students must demonstrate achievement in each content area.

Reporting Changes for 2009

Based on SB1, Kentucky will not be reporting state accountability and academic indices as in the past. The report does have several familiar pages with performance level (NAPD) trend, core content and disaggregation data per content area. Districts and schools will still see distributions of how students scored in the Novice (with sublevels), Apprentice (with sublevels), Proficient and Distinguished performance levels.

Confidentiality Changes

Due to federal regulations around the Family Education Rights and Privacy Act (FERPA), the numbers of students have been removed. Though there is a need to report as much data as possible, there is also a paramount need to maintain the confidential aspects of individual scores. When scores are reported in what is commonly called "small cells" where very few students may be categorized, there is the possibility of revealing individual scores when numbers are reported. Numbers are reported to each district in a confidential report that accompanies the public Interim Performance Report.

2008-2009

INTERIM PERFORMANCE REPORT

School: Burnside Elementary School

District: Pulaski County

Code: 501070

Grade: PRIMARY-05

CONTENTS OF THIS REPORT

Introduction	1
Academic Trend Data	
Reading Results	2-8
Mathematics Results	9-15
Science Results	16-18
Social Studies Results	19-21
Writing Results	22-24

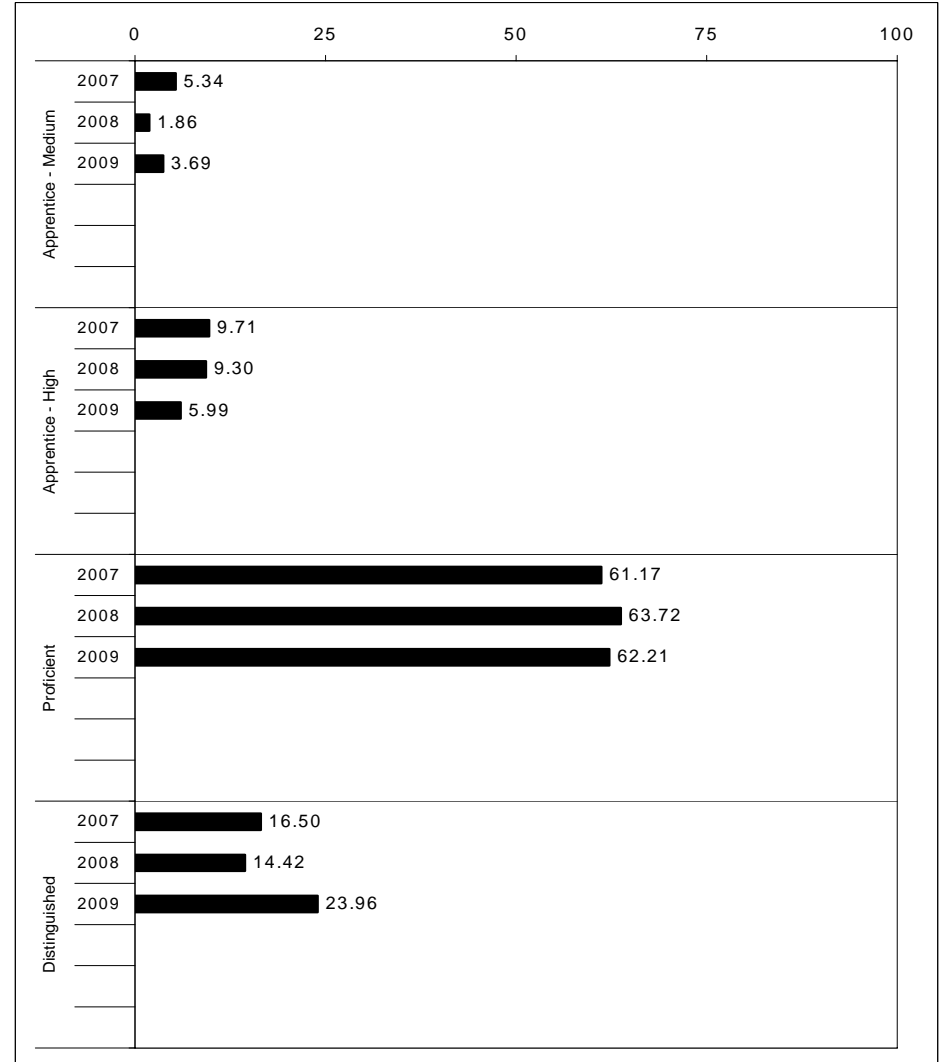
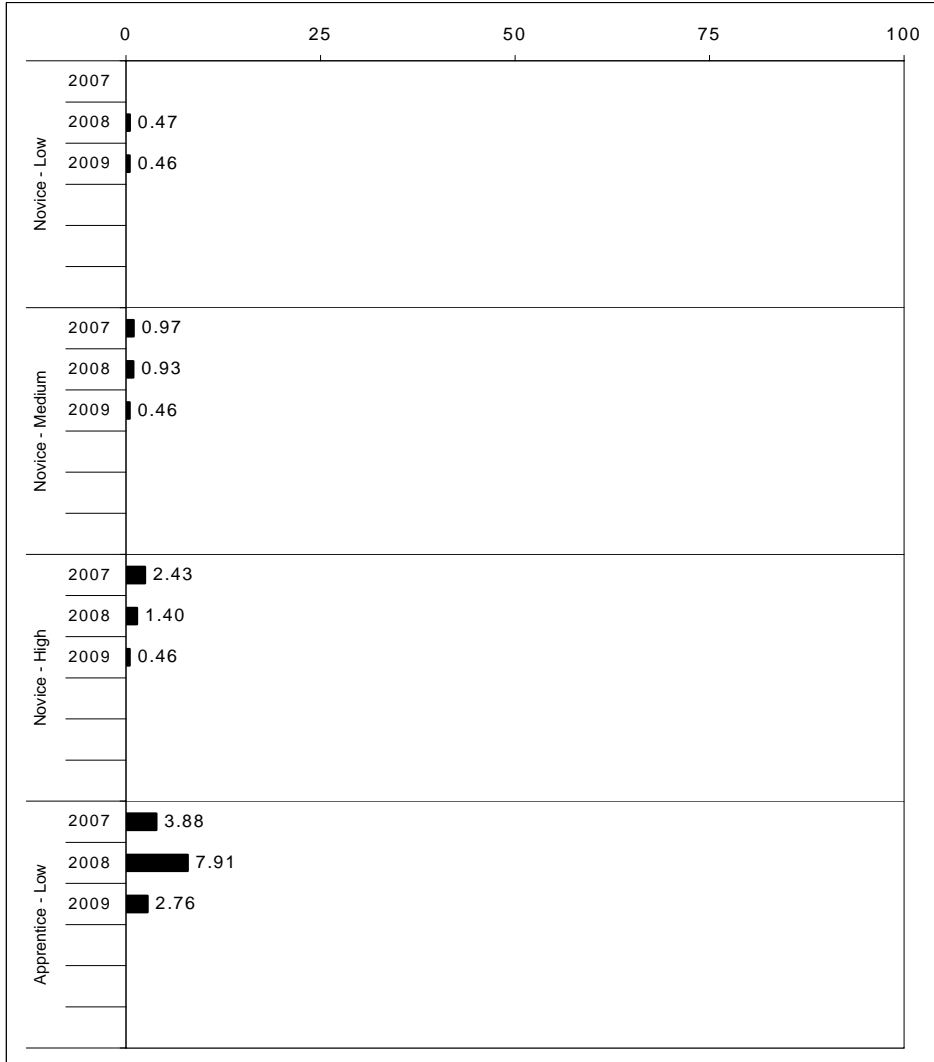
For more information, refer to the 2009 Interim Assessment Interpretative Guide on the Kentucky Department of Education Web site (www.education.ky.gov).





2008-2009
INTERIM PERFORMANCE REPORT
READING TREND DATA
Performance Level Percents

School: Burnside Elementary School
 District: Pulaski County
 Code: 501070
 Grade: ELEMENTARY



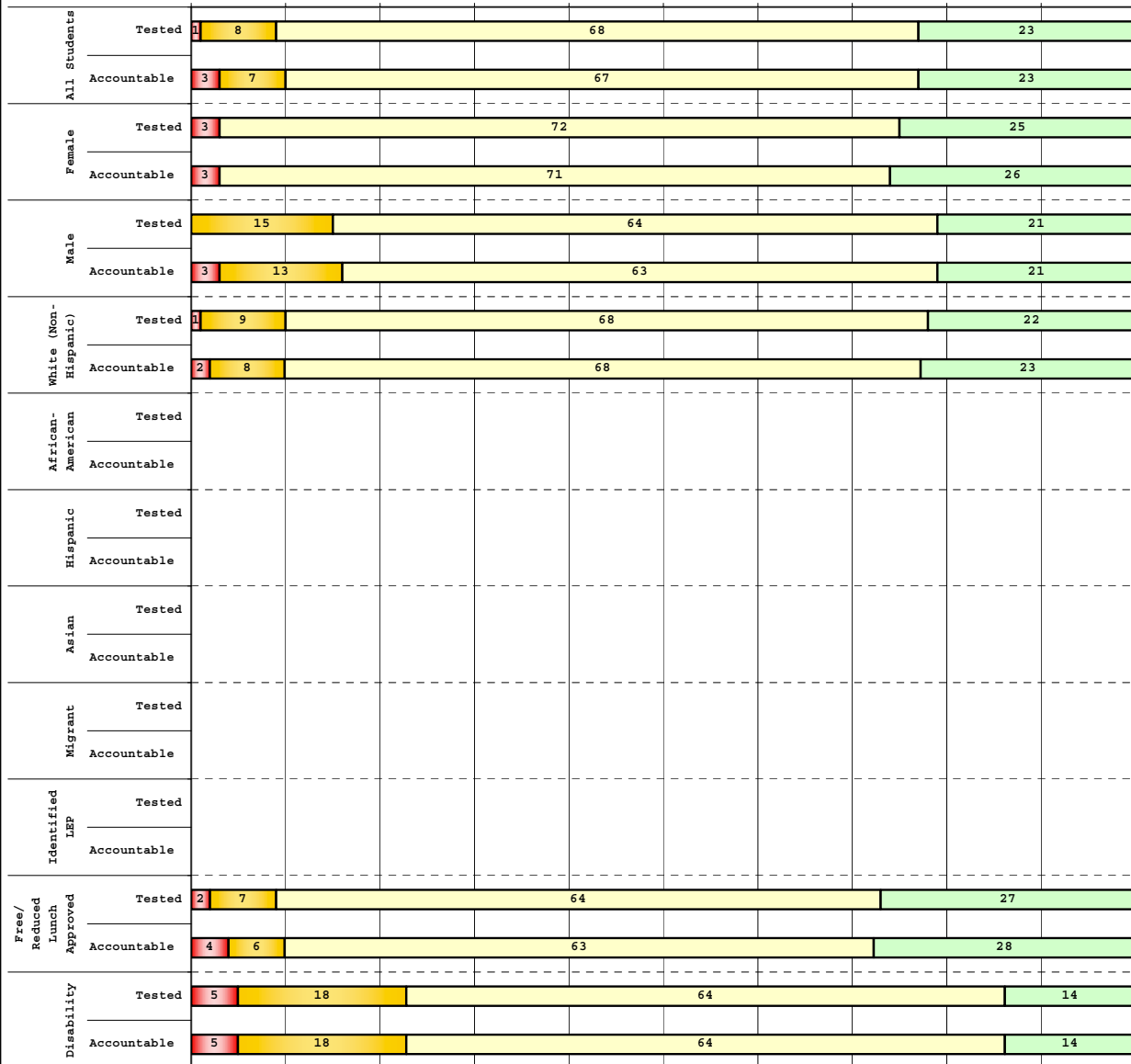
The horizontal bar represents the percent of students scoring at a performance level within a particular year. Percentages may not sum to 100% due to rounding.



**2008-2009
INTERIM PERFORMANCE REPORT
READING DISAGGREGATION
Performance Level Percents**

School: Burnside Elementary School
District: Pulaski County
Code: 501070
Grade: 03

0% 10% 20% 30% 40% 50% 60% 70% 80% 90% 100%



Category	N%	A%	P%	D%	P+D%
Tested Students					
Total	1	8	68	23	90.14
Female	3	0	72	25	96.88
Male	0	15	64	21	84.62
White (Non-Hispanic)	1	9	68	22	89.86
African-American	Unreportable*				
Hispanic	Unreportable*				
Asian	Unreportable*				
Other	Unreportable*				
Title I	1	8	68	23	90.14
Migrant	Unreportable*				
Identified LEP	Unreportable*				
Extended Sch Services	Unreportable*				
Gifted/Talented	Unreportable*				
F/R Lunch Approved	2	7	64	27	91.07
Vocational/2 Credits	Unreportable*				
Disability	5	18	64	14	77.27
Alternate Assessment	Unreportable*				
NCLB Accountable Students					
Total	3	7	67	23	89.86
Female	3	0	71	26	96.77
Male	3	13	63	21	84.21
White (Non-Hispanic)	2	8	68	23	90.91
African-American	Unreportable*				
Hispanic	Unreportable*				
Asian	Unreportable*				
Other	Unreportable*				
Title I	3	7	67	23	89.86
Migrant	Unreportable*				
Identified LEP	Unreportable*				
Extended Sch Services	Unreportable*				
Gifted/Talented	Unreportable*				
F/R Lunch Approved	4	6	63	28	90.74
Vocational/2 Credits	Unreportable*				
Disability	5	18	64	14	77.27
Alternate Assessment	Unreportable*				

■ Novice
■ Apprentice
■ Proficient
■ Distinguished

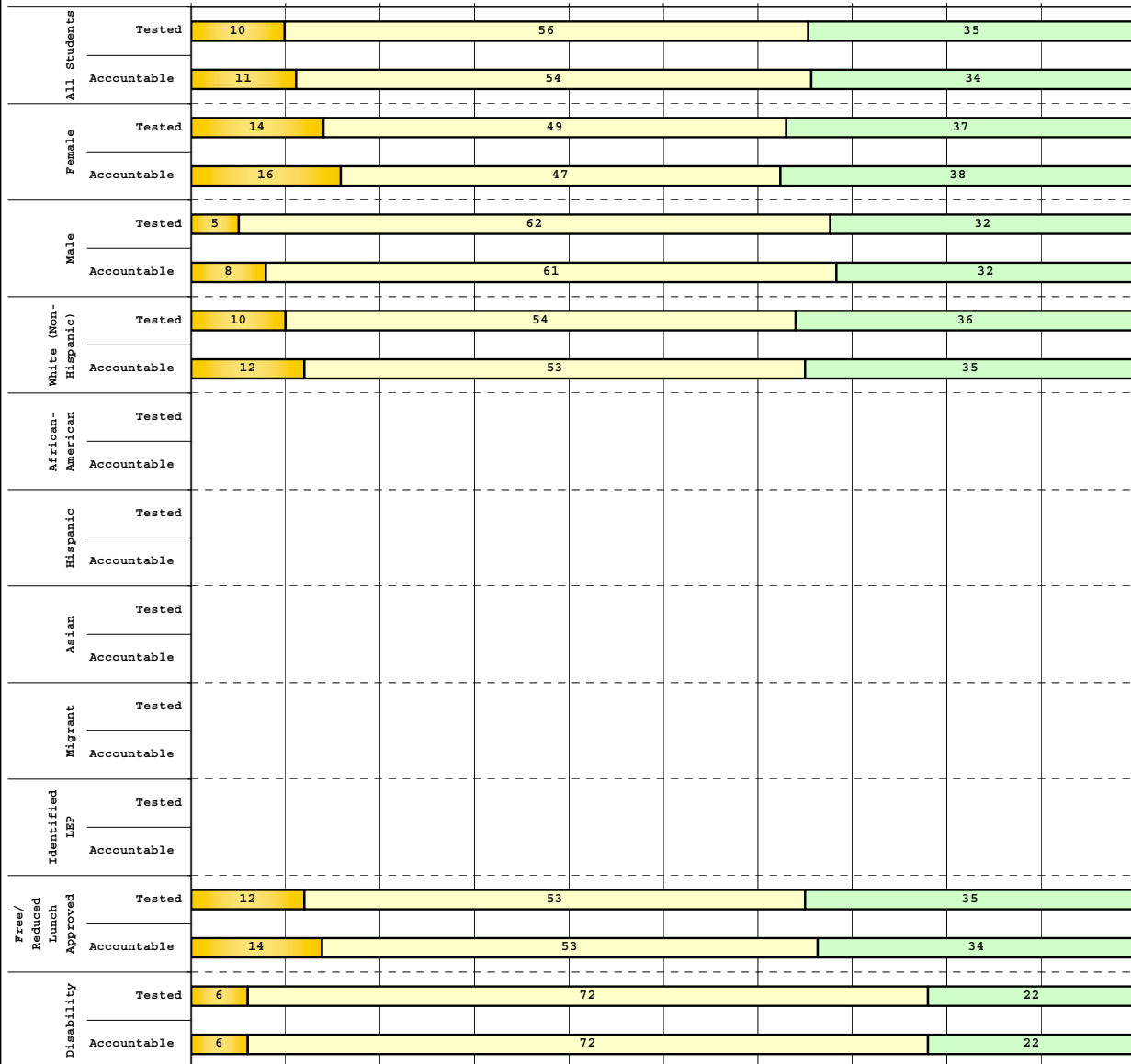
Percentage may not sum to 100% due to rounding. 'Unreportable*' indicates subpopulations with fewer than 10 students or subpopulations where all students score at the same performance level.



**2008-2009
INTERIM PERFORMANCE REPORT
READING DISAGGREGATION
Performance Level Percents**

School: Burnside Elementary School
District: Pulaski County
Code: 501070
Grade: 04

0% 10% 20% 30% 40% 50% 60% 70% 80% 90% 100%



Tested Students

	N%	A%	P%	D%	P+D%
Total	0	10	56	35	90.28
Female	0	14	49	37	85.71
Male	0	5	62	32	94.59
White (Non-Hispanic)	0	10	54	36	90.00
African-American	Unreportable*				
Hispanic					
Asian					
Other					
Title I	0	10	56	35	90.28
Migrant					
Identified LEP					
Extended Sch Services					
Gifted/Talented	0	0	28	72	100.00
F/R Lunch Approved	0	12	53	35	88.33
Vocational/2 Credits					
Disability	0	6	72	22	94.44
Alternate Assessment					

NCLB Accountable Students

	N%	A%	P%	D%	P+D%
Total	0	11	54	34	88.57
Female	0	16	47	38	84.38
Male	0	8	61	32	92.11
White (Non-Hispanic)	0	12	53	35	88.24
African-American	Unreportable*				
Hispanic					
Asian					
Other					
Title I	0	11	54	34	88.57
Migrant					
Identified LEP					
Extended Sch Services					
Gifted/Talented	0	0	28	72	100.00
F/R Lunch Approved	0	14	53	34	86.44
Vocational/2 Credits					
Disability	0	6	72	22	94.44
Alternate Assessment					

 Novice
 Apprentice
 Proficient
 Distinguished

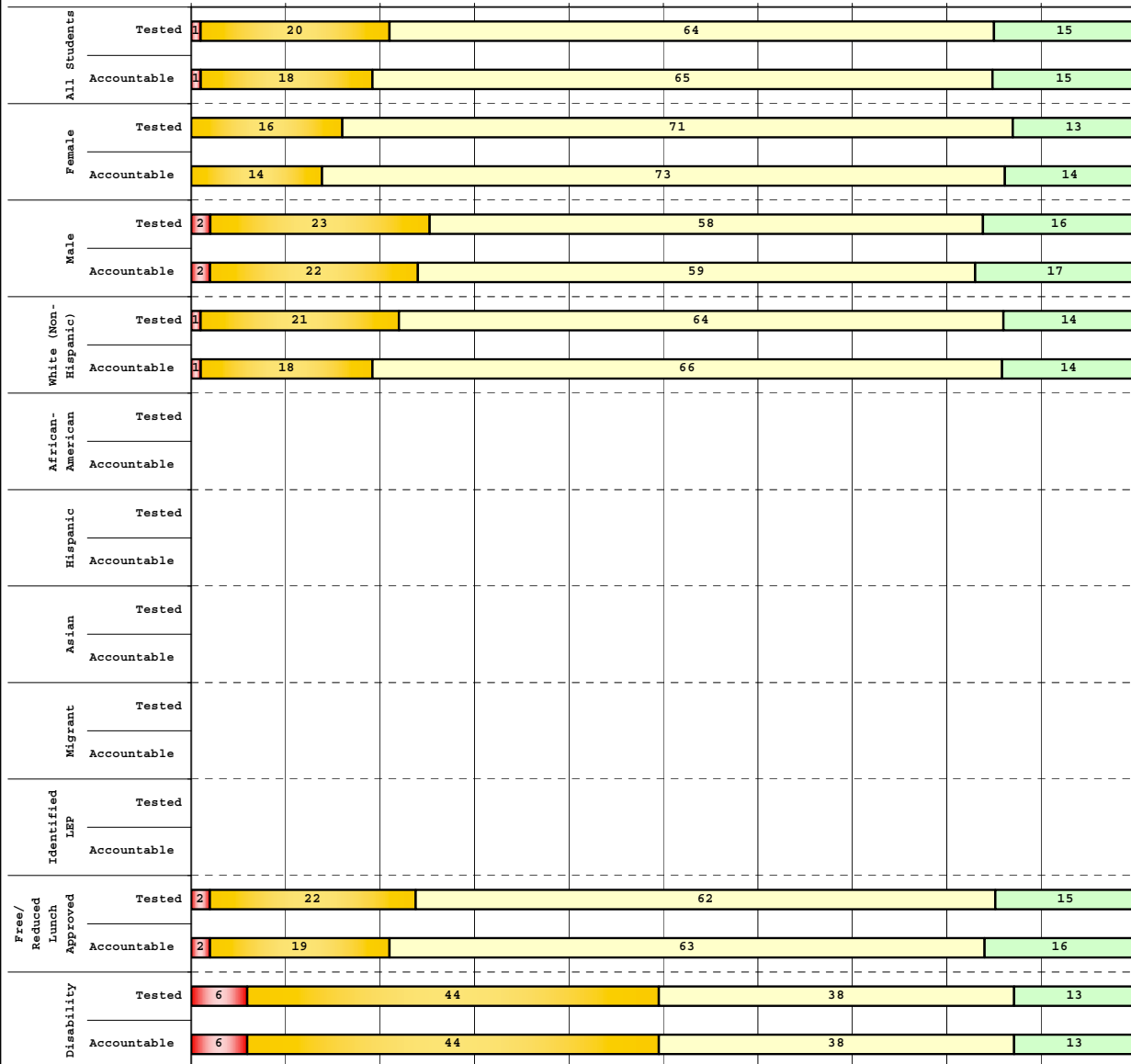
Percentage may not sum to 100% due to rounding. 'Unreportable*' indicates subpopulations with fewer than 10 students or subpopulations where all students score at the same performance level.



**2008-2009
INTERIM PERFORMANCE REPORT
READING DISAGGREGATION
Performance Level Percents**

School: Burnside Elementary School
District: Pulaski County
Code: 501070
Grade: 05

0% 10% 20% 30% 40% 50% 60% 70% 80% 90% 100%



	N%	A%	P%	D%	P+D%
Tested Students					
Total	1	20	64	15	79.01
Female	0	16	71	13	84.21
Male	2	23	58	16	74.42
White (Non-Hispanic)	1	21	64	14	78.21
African-American	Unreportable*				
Hispanic	Unreportable*				
Asian					
Other					
Title I	1	20	64	15	79.01
Migrant	Unreportable*				
Identified LEP					
Extended Sch Services					
Gifted/Talented	0	0	78	22	100.00
F/R Lunch Approved	2	22	62	15	76.92
Vocational/2 Credits					
Disability	6	44	38	13	50.00
Alternate Assessment	Unreportable*				
NCLB Accountable Students					
Total	1	18	65	15	80.77
Female	0	14	73	14	86.49
Male	2	22	59	17	75.61
White (Non-Hispanic)	1	18	66	14	80.26
African-American	Unreportable*				
Hispanic	Unreportable*				
Asian					
Other					
Title I	1	18	65	15	80.77
Migrant	Unreportable*				
Identified LEP					
Extended Sch Services					
Gifted/Talented	0	0	78	22	100.00
F/R Lunch Approved	2	19	63	16	79.37
Vocational/2 Credits					
Disability	6	44	38	13	50.00
Alternate Assessment	Unreportable*				

■ Novice
■ Apprentice
■ Proficient
■ Distinguished

Percentage may not sum to 100% due to rounding. 'Unreportable*' indicates subpopulations with fewer than 10 students or subpopulations where all students score at the same performance level.



2008-2009
INTERIM PERFORMANCE REPORT
READING CORE CONTENT

School: Burnside Elementary School
 District: Pulaski County
 Code: 501070
 Grade: 03

	No. Items	No. Observations	SCHOOL								Std. Err.	No. Observations	STATE								School -State Mean
			B	0	1	2	3	4	Mean	B			0	1	2	3	4	Mean			
OPEN RESPONSE																					
2.0.x - Developing Understanding	2	132	0	7	29	41	21	2	1.8	0.1	100,212	0	10	30	44	14	2	1.7	0.1		
3.0.x - Interpreting Text	2	132	0	7	29	41	21	2	1.8	0.1	100,212	0	10	30	44	14	2	1.7	0.1		
MULTIPLE CHOICE																					
1.0.x - Forming a Foundation	32	515	84	16	0				0.84	0.02	392,589	83	17	0				0.83	0.01		
2.0.x - Developing Understanding	89	1,304	86	14	0				0.86	0.01	993,477	80	20	0				0.80	0.06		
3.0.x - Interpreting Text	31	625	84	16	0				0.84	0.02	468,115	77	23	0				0.77	0.07		
5.0.x - Critical Stance	15	268	84	16	0				0.84	0.02	208,359	79	21	0				0.79	0.05		



**2008-2009
INTERIM PERFORMANCE REPORT
READING CORE CONTENT**

School: Burnside Elementary School
 District: Pulaski County
 Code: 501070
 Grade: 04

	No. Items	No. Observations	SCHOOL								Std. Err.	No. Observations	STATE								School -State Mean
			B	0	1	2	3	4	Mean	B			0	1	2	3	4	Mean			
OPEN RESPONSE																					
2.0.x - Developing Understanding	5	119	0	1	20	52	24	3	2.1	0.1	81,849	0	3	24	52	18	3	1.9	0.2		
3.0.x - Interpreting Text	6	189	0	1	15	42	34	8	2.3	0.1	131,199	0	4	22	45	23	5	2.0	0.3		
MULTIPLE CHOICE																					
1.0.x - Forming a Foundation	34	570	78	22	0				0.78	0.02	401,452	72	28	0				0.71	0.07		
2.0.x - Developing Understanding	76	1,231	82	18	0				0.81	0.01	868,422	73	27	0				0.73	0.08		
3.0.x - Interpreting Text	29	404	84	16	0				0.84	0.02	278,648	79	21	0				0.79	0.05		
5.0.x - Critical Stance	9	226	80	20	0				0.80	0.03	155,704	74	26	0				0.74	0.06		



2008-2009
INTERIM PERFORMANCE REPORT
READING CORE CONTENT

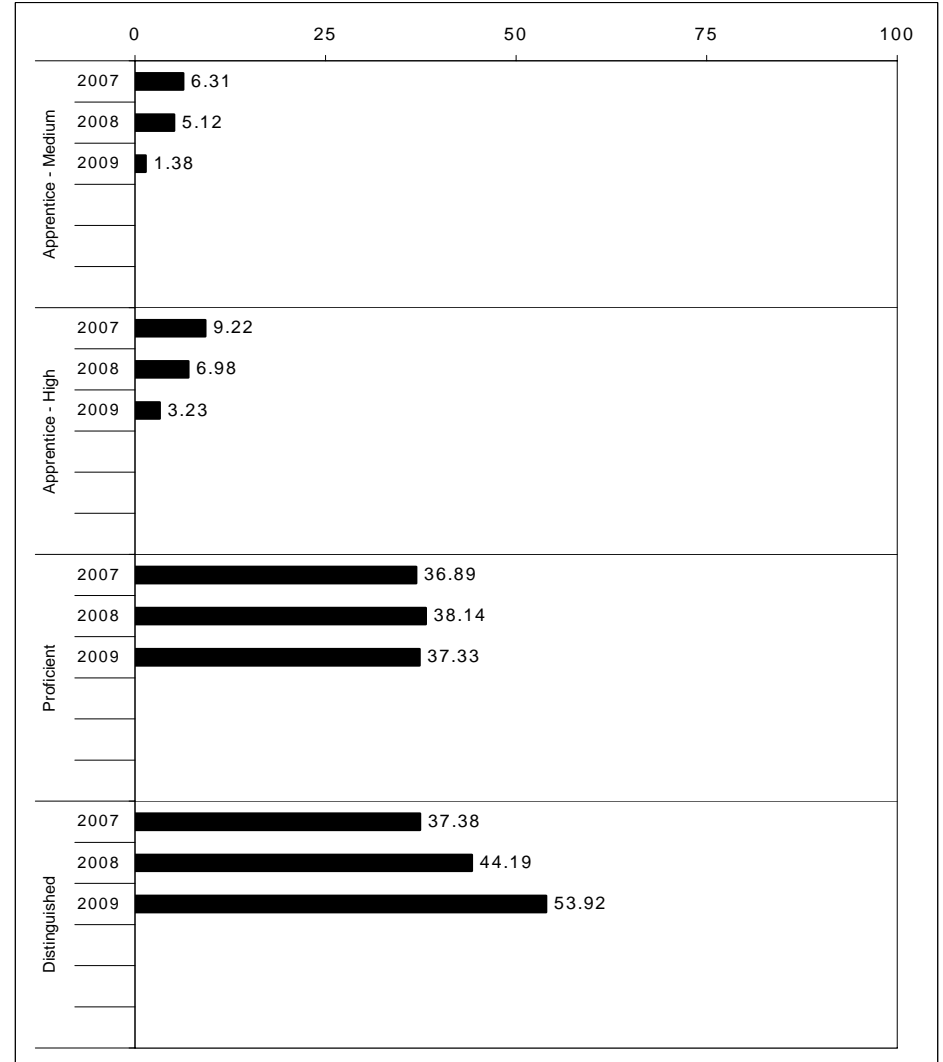
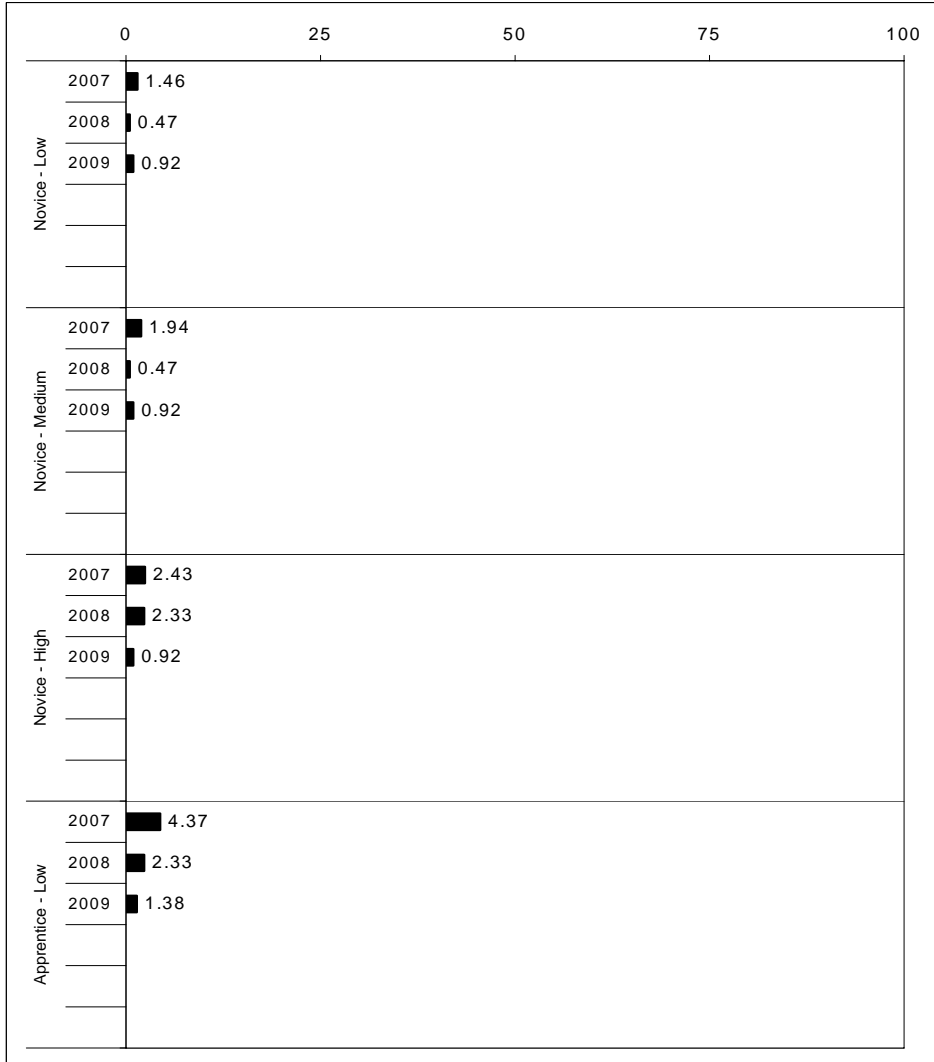
School: Burnside Elementary School
 District: Pulaski County
 Code: 501070
 Grade: 05

	No. Items	No. Observations	SCHOOL							Mean	Std. Err.	No. Observations	STATE							Mean	School -State Mean
			B	0	1	2	3	4	B				0	1	2	3	4				
OPEN RESPONSE																					
2.0.x - Developing Understanding	6	141	0	1	25	52	18	3	2.0	0.1	89,507	0	5	23	48	20	5	2.0	0.0		
3.0.x - Interpreting Text	6	202	0	0	21	57	19	2	2.0	0.1	130,403	0	5	21	50	19	4	2.0	0.0		
MULTIPLE CHOICE																					
1.0.x - Forming a Foundation	28	420	77	23	0				0.77	0.02	268,187	74	26	0				0.74	0.03		
2.0.x - Developing Understanding	71	1,264	83	17	0				0.83	0.01	823,068	80	20	0				0.80	0.03		
3.0.x - Interpreting Text	27	536	84	16	0				0.84	0.02	341,653	81	19	0				0.81	0.03		
5.0.x - Critical Stance	17	474	81	19	0				0.81	0.02	300,671	75	25	0				0.75	0.06		



2008-2009
INTERIM PERFORMANCE REPORT
MATHEMATICS TREND DATA
Performance Level Percents

School: Burnside Elementary School
 District: Pulaski County
 Code: 501070
 Grade: ELEMENTARY



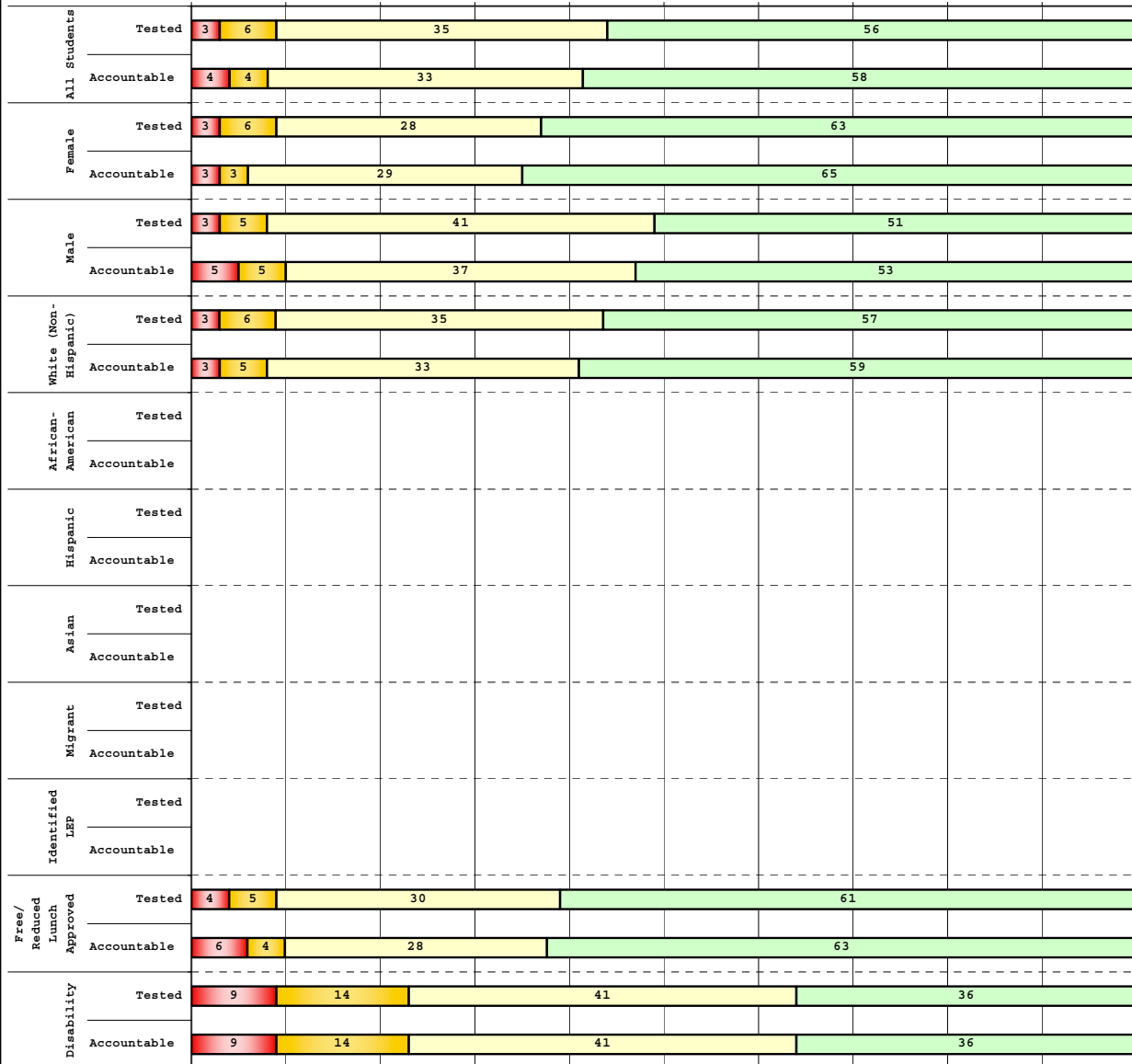
The horizontal bar represents the percent of students scoring at a performance level within a particular year. Percentages may not sum to 100% due to rounding.



**2008-2009
INTERIM PERFORMANCE REPORT
MATHEMATICS DISAGGREGATION
Performance Level Percents**

School: Burnside Elementary School
District: Pulaski County
Code: 501070
Grade: 03

0% 10% 20% 30% 40% 50% 60% 70% 80% 90% 100%



Subgroup	N%	A%	P%	D%	P+D%
Tested Students					
Total	3	6	35	56	91.55
Female	3	6	28	63	90.63
Male	3	5	41	51	92.31
White (Non-Hispanic)	3	6	35	57	91.30
African-American	Unreportable*				
Hispanic	Unreportable*				
Asian	Unreportable*				
Other	Unreportable*				
Title I	3	6	35	56	91.55
Migrant	Unreportable*				
Identified LEP	Unreportable*				
Extended Sch Services	Unreportable*				
Gifted/Talented	Unreportable*				
F/R Lunch Approved	4	5	30	61	91.07
Vocational/2 Credits	Unreportable*				
Disability	9	14	41	36	77.27
Alternate Assessment	Unreportable*				
NCLB Accountable Students					
Total	4	4	33	58	91.30
Female	3	3	29	65	93.55
Male	5	5	37	53	89.47
White (Non-Hispanic)	3	5	33	59	92.42
African-American	Unreportable*				
Hispanic	Unreportable*				
Asian	Unreportable*				
Other	Unreportable*				
Title I	4	4	33	58	91.30
Migrant	Unreportable*				
Identified LEP	Unreportable*				
Extended Sch Services	Unreportable*				
Gifted/Talented	Unreportable*				
F/R Lunch Approved	6	4	28	63	90.74
Vocational/2 Credits	Unreportable*				
Disability	9	14	41	36	77.27
Alternate Assessment	Unreportable*				

■ Novice
■ Apprentice
■ Proficient
■ Distinguished

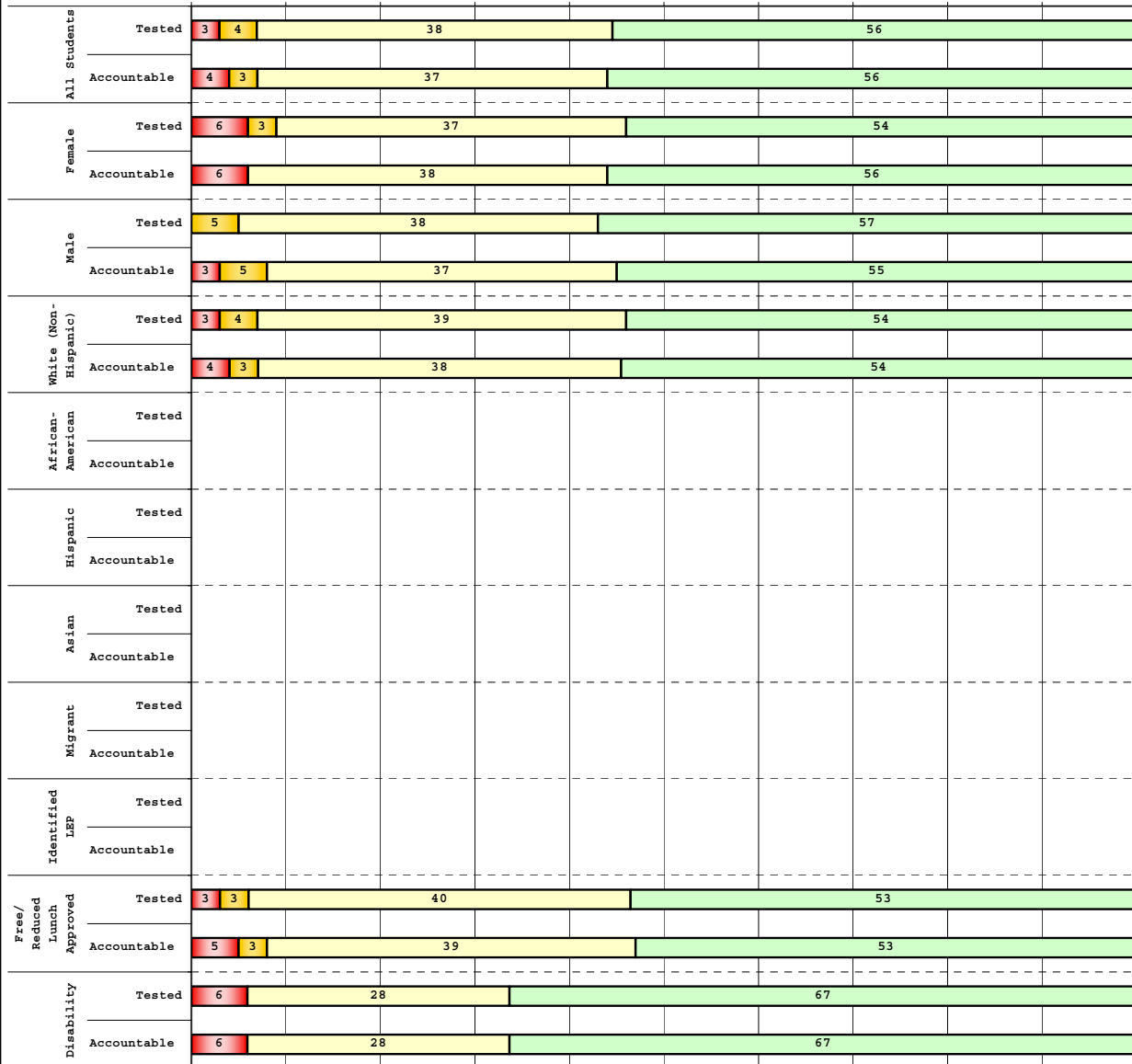
Percentage may not sum to 100% due to rounding. 'Unreportable*' indicates subpopulations with fewer than 10 students or subpopulations where all students score at the same performance level.



2008-2009
INTERIM PERFORMANCE REPORT
MATHEMATICS DISAGGREGATION
Performance Level Percents

School: Burnside Elementary School
 District: Pulaski County
 Code: 501070
 Grade: 04

0% 10% 20% 30% 40% 50% 60% 70% 80% 90% 100%



	N%	A%	P%	D%	P+D%
Tested Students					
Total	3	4	38	56	93.06
Female	6	3	37	54	91.43
Male	0	5	38	57	94.59
White (Non-Hispanic)	3	4	39	54	92.86
African-American	Unreportable*				
Hispanic					
Asian					
Other					
Title I	3	4	38	56	93.06
Migrant					
Identified LEP					
Extended Sch Services					
Gifted/Talented	0	0	17	83	100.00
F/R Lunch Approved	3	3	40	53	93.33
Vocational/2 Credits					
Disability	6	0	28	67	94.44
Alternate Assessment					
NCLB Accountable Students					
Total	4	3	37	56	92.86
Female	6	0	38	56	93.75
Male	3	5	37	55	92.11
White (Non-Hispanic)	4	3	38	54	92.65
African-American	Unreportable*				
Hispanic					
Asian					
Other					
Title I	4	3	37	56	92.86
Migrant					
Identified LEP					
Extended Sch Services					
Gifted/Talented	0	0	17	83	100.00
F/R Lunch Approved	5	3	39	53	91.53
Vocational/2 Credits					
Disability	6	0	28	67	94.44
Alternate Assessment					

■ Novice
■ Apprentice
■ Proficient
■ Distinguished

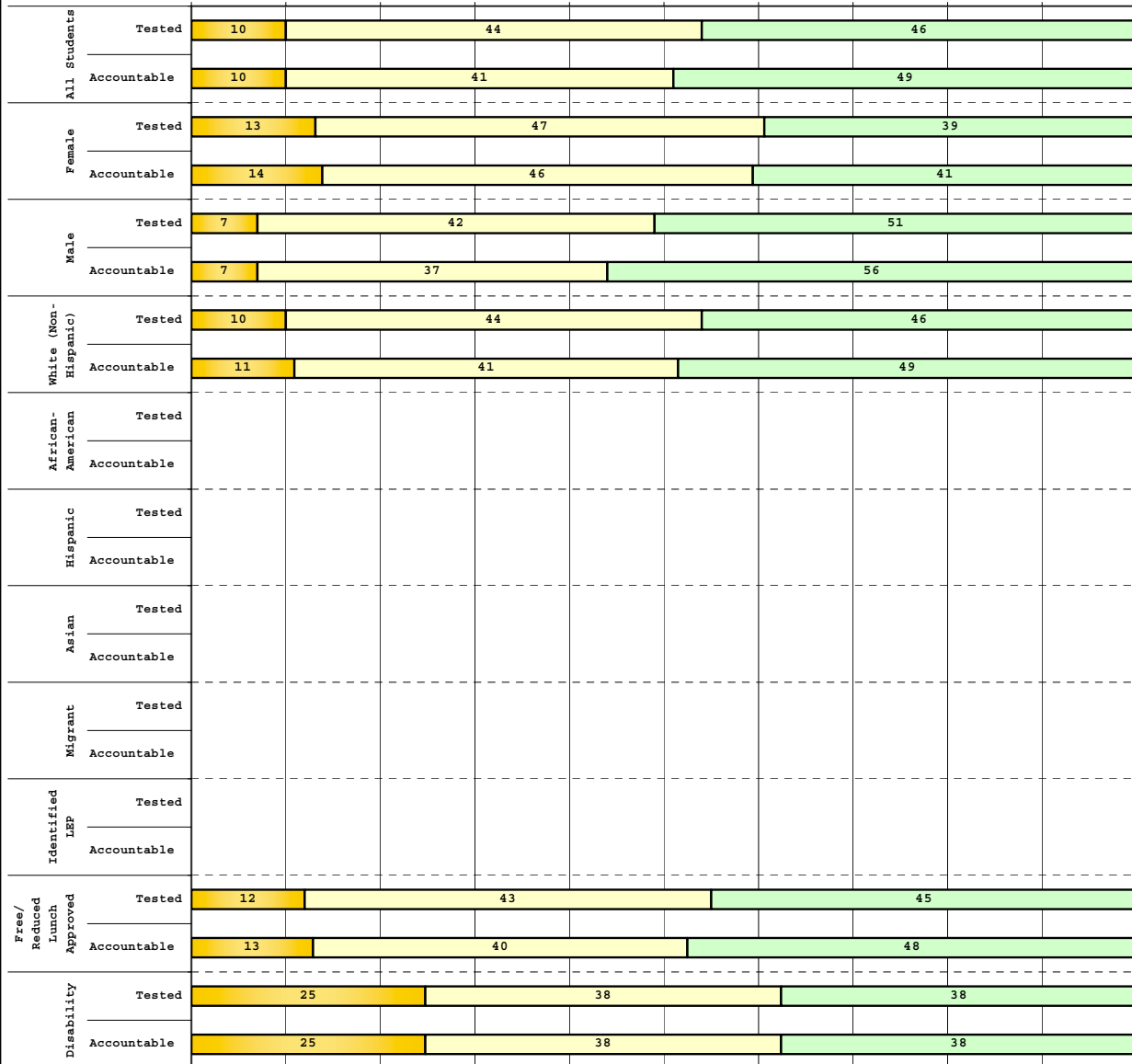
Percentage may not sum to 100% due to rounding. 'Unreportable*' indicates subpopulations with fewer than 10 students or subpopulations where all students score at the same performance level.



2008-2009
INTERIM PERFORMANCE REPORT
MATHEMATICS DISAGGREGATION
Performance Level Percents

School: Burnside Elementary School
 District: Pulaski County
 Code: 501070
 Grade: 05

0% 10% 20% 30% 40% 50% 60% 70% 80% 90% 100%



	N%	A%	P%	D%	P+D%
Tested Students					
Total	0	10	44	46	90.12
Female	0	13	47	39	86.84
Male	0	7	42	51	93.02
White (Non-Hispanic)	0	10	44	46	89.74
African-American	Unreportable*				
Hispanic	Unreportable*				
Asian					
Other					
Title I	0	10	44	46	90.12
Migrant	Unreportable*				
Identified LEP					
Extended Sch Services					
Gifted/Talented	0	0	11	89	100.00
F/R Lunch Approved	0	12	43	45	87.69
Vocational/2 Credits					
Disability	0	25	38	38	75.00
Alternate Assessment	Unreportable*				
NCLB Accountable Students					
Total	0	10	41	49	89.74
Female	0	14	46	41	86.49
Male	0	7	37	56	92.68
White (Non-Hispanic)	0	11	41	49	89.47
African-American	Unreportable*				
Hispanic	Unreportable*				
Asian					
Other					
Title I	0	10	41	49	89.74
Migrant	Unreportable*				
Identified LEP					
Extended Sch Services					
Gifted/Talented	0	0	11	89	100.00
F/R Lunch Approved	0	13	40	48	87.30
Vocational/2 Credits					
Disability	0	25	38	38	75.00
Alternate Assessment	Unreportable*				

■ Novice
■ Apprentice
■ Proficient
■ Distinguished

Percentage may not sum to 100% due to rounding. 'Unreportable*' indicates subpopulations with fewer than 10 students or subpopulations where all students score at the same performance level.



2008-2009
INTERIM PERFORMANCE REPORT
MATHEMATICS CORE CONTENT

School: Burnside Elementary School
 District: Pulaski County
 Code: 501070
 Grade: 03

	No. Items	No. Observations	SCHOOL								Std. Err.	No. Observations	STATE								School -State Mean
			B	0	1	2	3	4	Mean	B			0	1	2	3	4	Mean			
OPEN RESPONSE																					
1.x.x - Number Prop Oper	5	164	1	15	24	32	13	15	1.9	0.1	125,243	0	21	35	26	10	8	1.5	0.4		
2.x.x - Measurement	1	11	0	0	0	9	36	55	3.5	0.4	8,325	0	25	5	30	14	25	2.1	1.4		
3.x.x - Geometry	2	22	0	5	9	32	14	41	2.8	0.3	16,777	0	8	24	35	13	20	2.1	0.7		
4.x.x - Data Analysis & Probabilit	1	66	0	5	6	9	27	53	3.2	0.2	50,106	0	9	13	19	27	32	2.6	0.6		
5.x.x - Algebraic Thinking	2	78	0	4	5	9	31	51	3.2	0.1	58,404	0	9	14	19	28	31	2.6	0.6		
MULTIPLE CHOICE																					
1.x.x - Number Prop Oper	32	1,068	Correct	Incorrect	Omit/Mult				0.85	0.01	810,106	Correct	Incorrect	Omit/Mult				0.74	0.11		
2.x.x - Measurement	7	242	85	15	0				0.93	0.02	183,647	74	26	0				0.81	0.12		
3.x.x - Geometry	18	528	93	7	0				0.91	0.02	400,848	81	18	0				0.85	0.06		
4.x.x - Data Analysis & Probabilit	8	252	91	9	0				0.80	0.03	192,126	85	15	0				0.69	0.11		
5.x.x - Algebraic Thinking	11	286	80	20	0				0.89	0.02	217,089	69	31	0				0.78	0.11		



2008-2009
INTERIM PERFORMANCE REPORT
MATHEMATICS CORE CONTENT

School: Burnside Elementary School
 District: Pulaski County
 Code: 501070
 Grade: 04

	No. Items	No. Observations	SCHOOL								STATE								School -State Mean
			Percents						Mean	Std. Err.	Percents						Mean		
			B	0	1	2	3	4					No. Observations	B	0	1		2	3
OPEN RESPONSE																			
1.x.x - Number Prop Oper	4	101	0	12	14	26	26	23	2.3	0.1	73,656	0	17	24	29	19	12	1.9	0.4
2.x.x - Measurement	1	13	0	23	8	46	8	15	1.8	0.4	8,195	0	43	13	10	20	13	1.5	0.3
3.x.x - Geometry	2	85	0	5	11	14	25	46	3.0	0.2	57,352	0	11	20	17	19	33	2.4	0.6
4.x.x - Data Analysis & Probabilit	1	12	0	0	33	33	33	0	2.0	0.3	8,152	0	5	36	29	23	6	1.9	0.1
5.x.x - Algebraic Thinking	2	82	0	0	22	33	30	15	2.4	0.1	57,508	0	5	27	32	25	11	2.1	0.3
MULTIPLE CHOICE																			
			Correct	Incorrect	Omit/Mult							Correct	Incorrect	Omit/Mult					
1.x.x - Number Prop Oper	31	946	78	22	0	0.78	0.02	664,194	67	33	0	0.67	0.11						
2.x.x - Measurement	7	196	84	16	0	0.84	0.03	139,170	62	38	0	0.62	0.22						
3.x.x - Geometry	14	395	86	14	0	0.86	0.02	278,460	77	23	0	0.77	0.09						
4.x.x - Data Analysis & Probabilit	12	436	78	22	0	0.78	0.02	303,394	71	29	0	0.71	0.07						
5.x.x - Algebraic Thinking	11	362	82	18	0	0.82	0.02	253,829	69	31	0	0.69	0.13						



2008-2009
INTERIM PERFORMANCE REPORT
MATHEMATICS CORE CONTENT

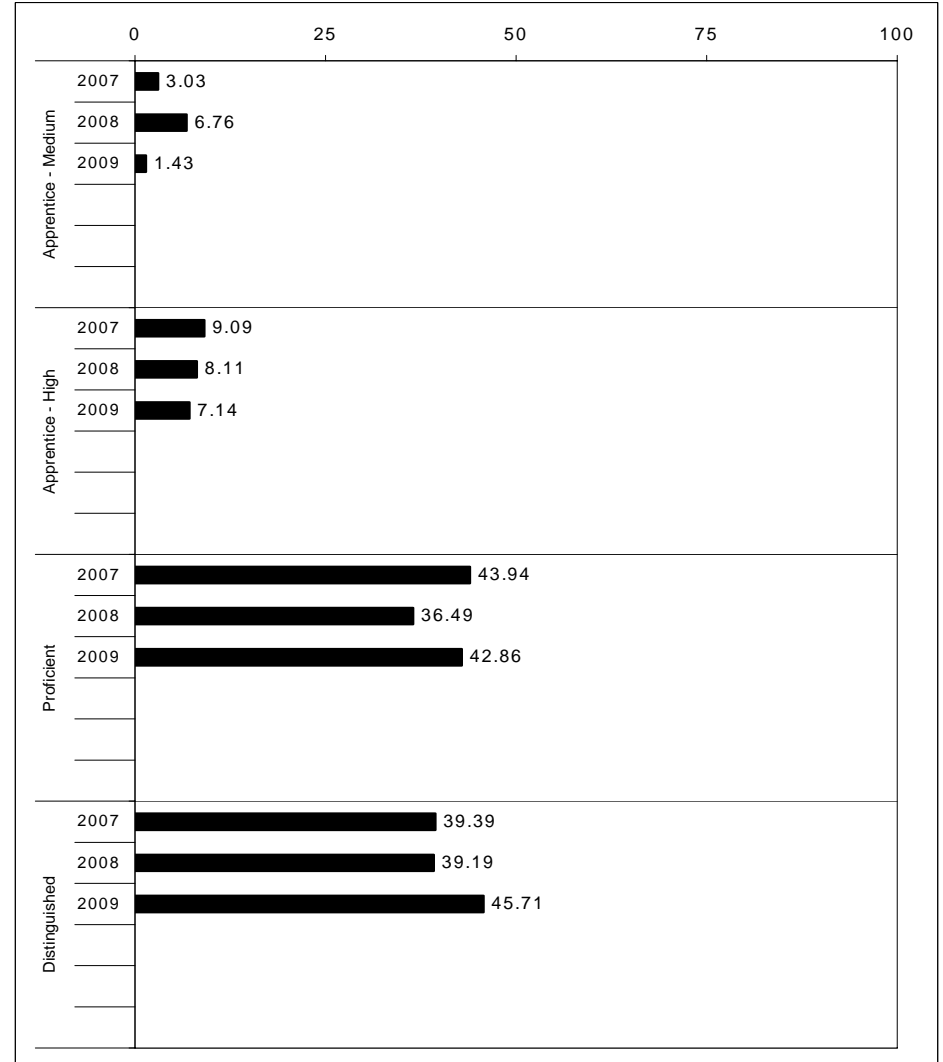
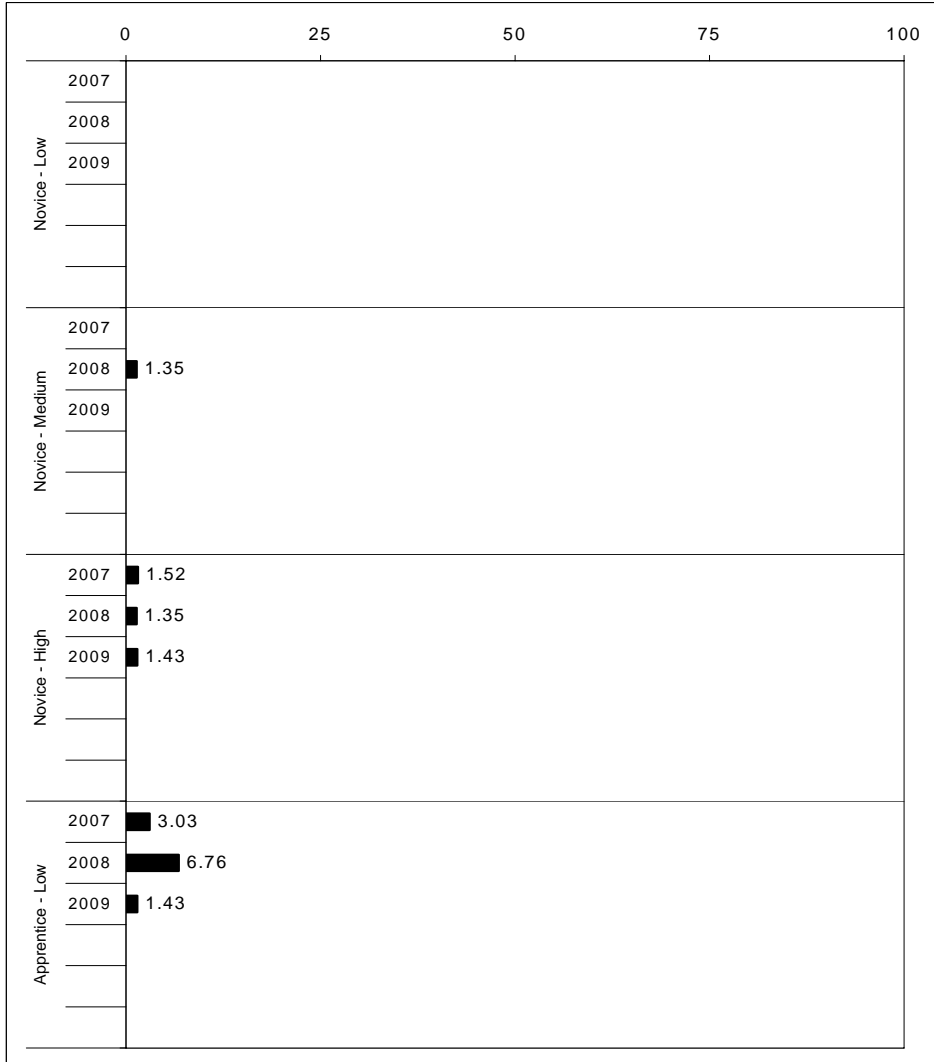
School: Burnside Elementary School
 District: Pulaski County
 Code: 501070
 Grade: 05

	No. Items	No. Observations	SCHOOL								STATE								School -State Mean
			Percents						Mean	Std. Err.	Percents						Mean		
			B	0	1	2	3	4					No. Observations	B	0	1		2	3
OPEN RESPONSE																			
1.x.x - Number Prop Oper	4	115	0	3	10	20	29	38	2.9	0.1	73,199	0	8	20	18	25	29	2.5	0.4
2.x.x - Measurement	1	11	0	27	9	45	18	0	1.5	0.4	8,380	0	37	30	13	10	11	1.3	0.2
3.x.x - Geometry	2	88	0	2	15	26	26	31	2.7	0.1	56,900	0	6	24	30	26	14	2.2	0.5
4.x.x - Data Analysis & Probabilit	1	76	0	7	16	18	17	42	2.7	0.2	48,828	0	15	18	15	17	35	2.4	0.3
5.x.x - Algebraic Thinking	1	14	0	14	21	14	7	43	2.4	0.4	8,005	0	13	15	20	17	35	2.5	-0.1
MULTIPLE CHOICE																			
1.x.x - Number Prop Oper	29	999	Correct	Incorrect	Omit/Mult				0.78	0.02	643,144	Correct	Incorrect	Omit/Mult				0.63	0.15
2.x.x - Measurement	9	242	78	22	0				0.71	0.03	154,489	62	37	0				0.62	0.09
3.x.x - Geometry	14	433	71	29	0				0.88	0.02	276,516	78	22	0				0.78	0.10
4.x.x - Data Analysis & Probabilit	11	392	88	12	0				0.76	0.02	252,212	64	36	0				0.64	0.12
5.x.x - Algebraic Thinking	10	380	76	24	0				0.79	0.02	244,140	64	36	0				0.64	0.12
			79	21	0							65	35	0				0.65	0.14



2008-2009
INTERIM PERFORMANCE REPORT
SCIENCE TREND DATA
Performance Level Percents

School: Burnside Elementary School
 District: Pulaski County
 Code: 501070
 Grade: 04

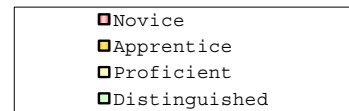
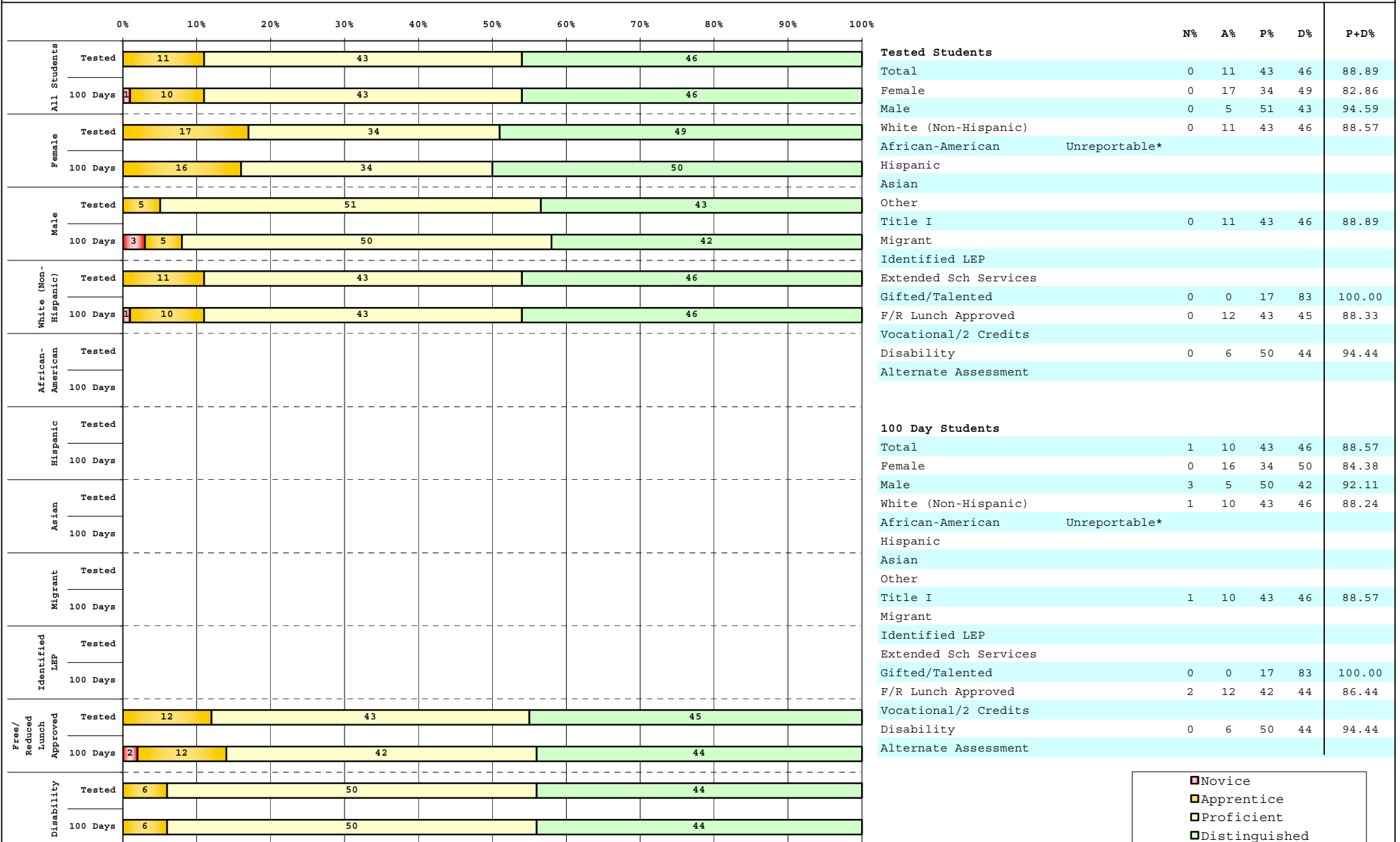


The horizontal bar represents the percent of students scoring at a performance level within a particular year. Percentages may not sum to 100% due to rounding.



**2008-2009
INTERIM PERFORMANCE REPORT
SCIENCE DISAGGREGATION
Performance Level Percents**

School: Burnside Elementary School
District: Pulaski County
Code: 501070
Grade: 04



Percentage may not sum to 100% due to rounding. 'Unreportable*' indicates subpopulations with fewer than 10 students or subpopulations where all students score at the same performance level.



2008-2009
INTERIM PERFORMANCE REPORT
SCIENCE CORE CONTENT

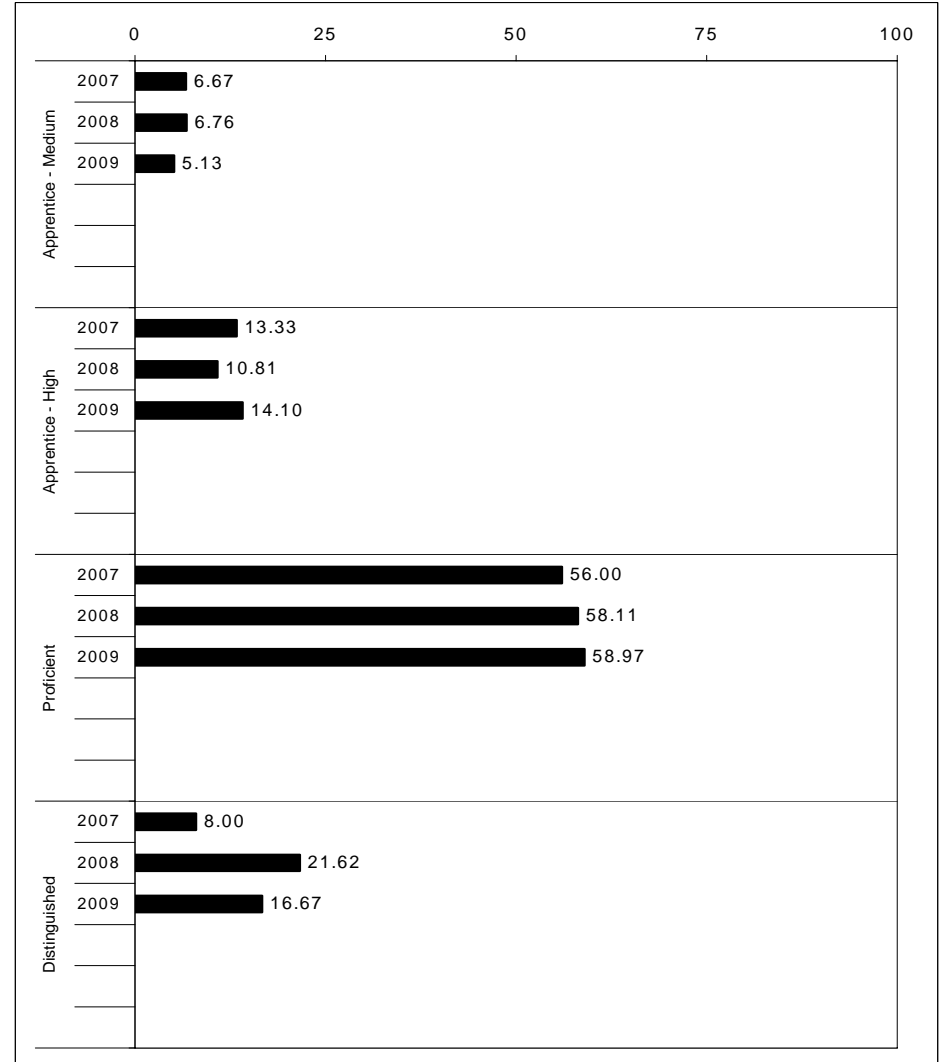
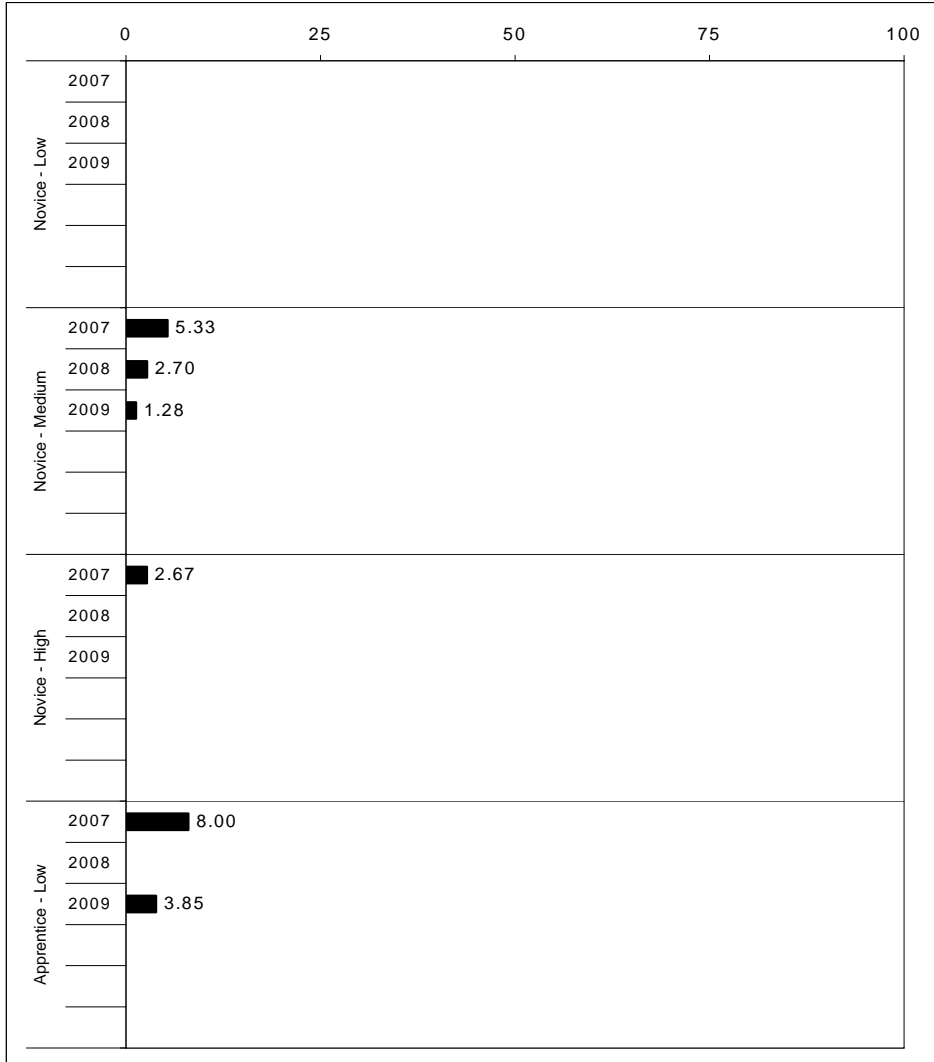
School: Burnside Elementary School
 District: Pulaski County
 Code: 501070
 Grade: 04

	No. Items	No. Observations	SCHOOL								STATE								School -State Mean
			Percents						Mean	Std. Err.	Percents						Mean		
			B	0	1	2	3	4					No. Observations	B	0	1		2	3
OPEN RESPONSE																			
1.x.x - Physical Science	2	27	0	15	11	37	26	11	2.1	0.2	16,337	0	17	19	42	17	5	1.7	0.4
2.x.x - Earth Space Science	3	91	0	2	12	35	32	19	2.5	0.1	65,658	0	12	22	35	26	4	1.9	0.6
3.x.x - Biological Science	3	92	0	1	8	25	55	11	2.7	0.1	65,506	0	2	11	33	44	9	2.5	0.2
4.x.x - Unifying Concepts	2	82	0	1	6	29	41	22	2.8	0.1	57,508	0	3	13	33	35	15	2.5	0.3
MULTIPLE CHOICE																			
			Correct	Incorrect	Omit/Mult							Correct	Incorrect	Omit/Mult					
1.x.x - Physical Science	18	560	85	15	0		0.85	0.02			393,336	82	18	0			0.81	0.04	
2.x.x - Earth Space Science	19	572	78	22	0		0.78	0.02			401,488	71	29	0			0.71	0.07	
3.x.x - Biological Science	22	660	86	14	0		0.86	0.02			467,138	78	22	0			0.78	0.08	
4.x.x - Unifying Concepts	14	460	90	10	0		0.90	0.02			319,534	84	15	0			0.84	0.06	



2008-2009
INTERIM PERFORMANCE REPORT
SOCIAL STUDIES TREND DATA
Performance Level Percents

School: Burnside Elementary School
 District: Pulaski County
 Code: 501070
 Grade: 05

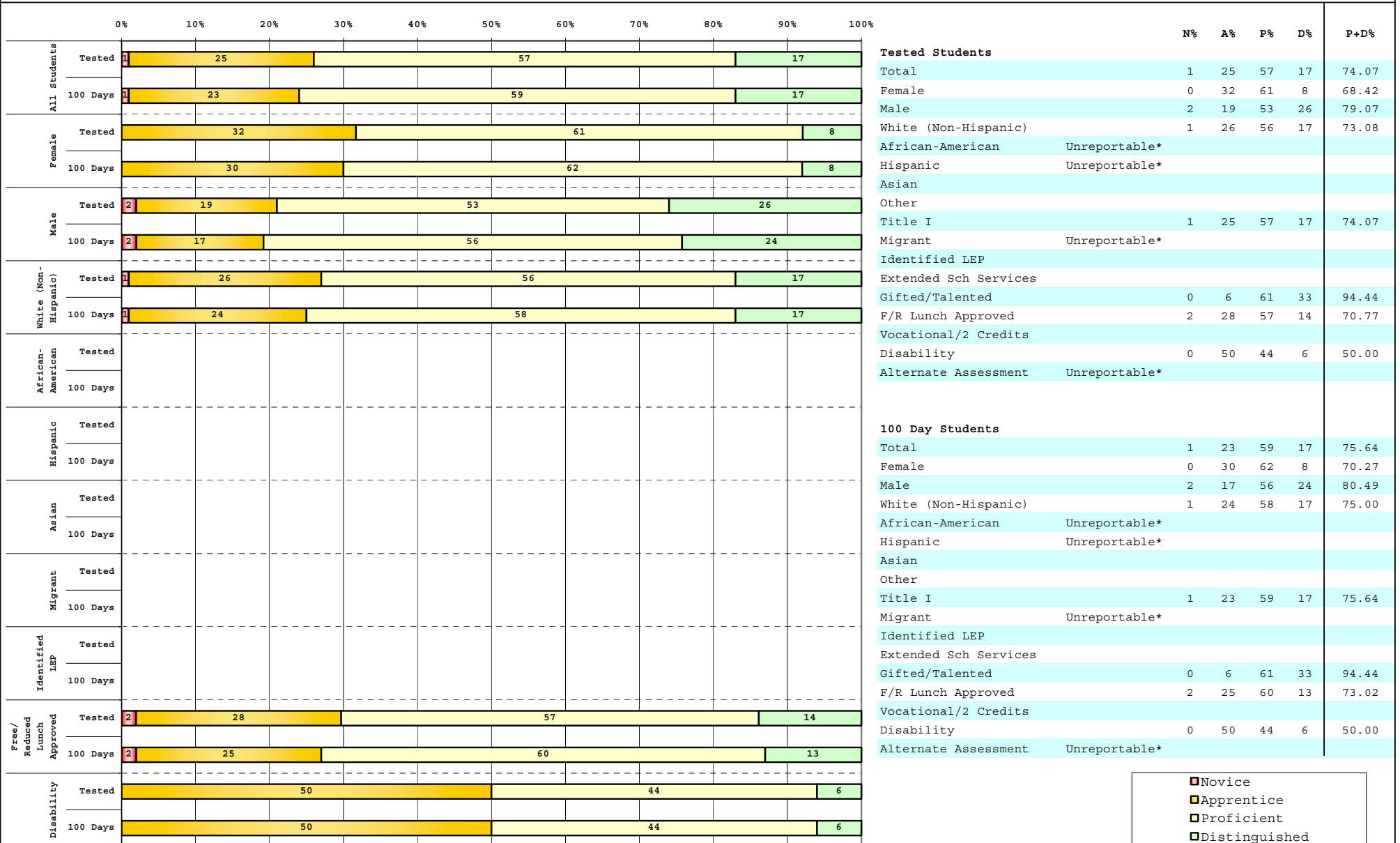


The horizontal bar represents the percent of students scoring at a performance level within a particular year. Percentages may not sum to 100% due to rounding.



**2008-2009
INTERIM PERFORMANCE REPORT
SOCIAL STUDIES DISAGGREGATION
Performance Level Percents**

School: Burnside Elementary School
District: Pulaski County
Code: 501070
Grade: 05



■	Novice
■	Apprentice
■	Proficient
■	Distinguished

Percentage may not sum to 100% due to rounding. 'Unreportable*' indicates subpopulations with fewer than 10 students or subpopulations where all students score at the same performance level.



2008-2009
INTERIM PERFORMANCE REPORT
SOCIAL STUDIES CORE CONTENT

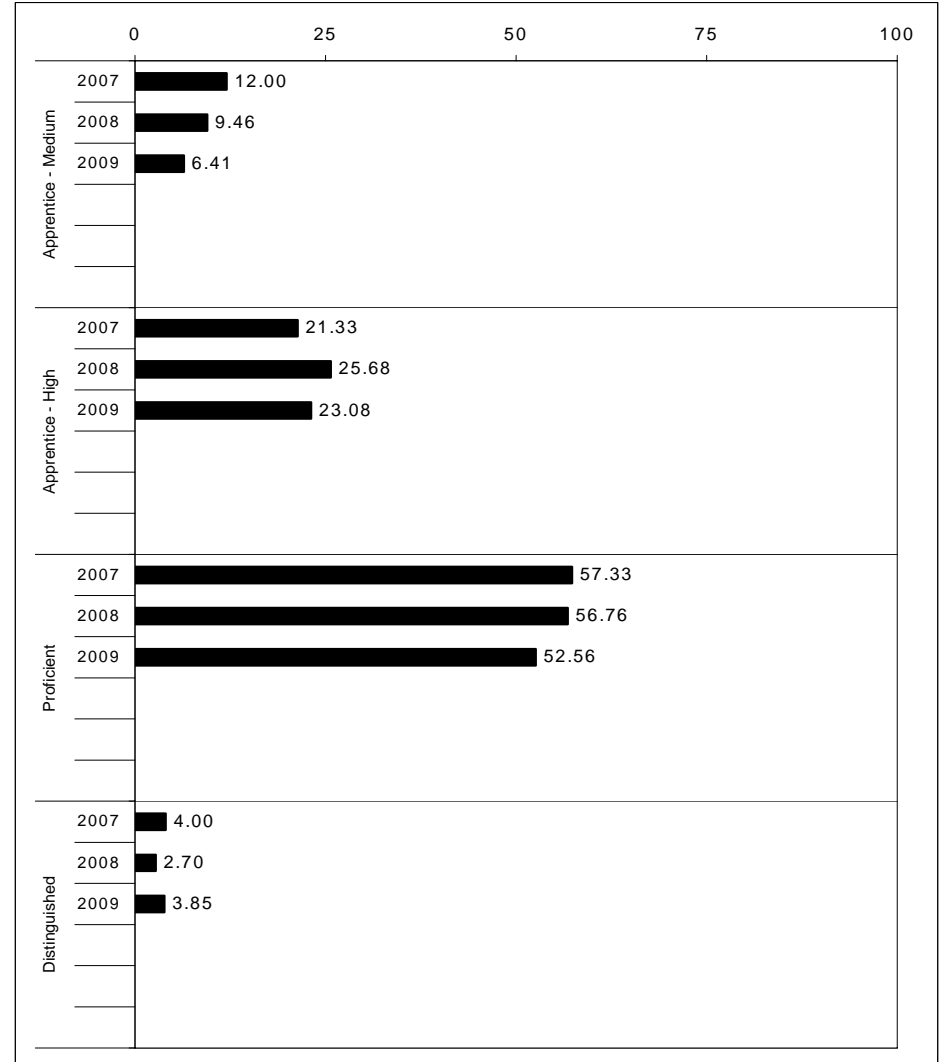
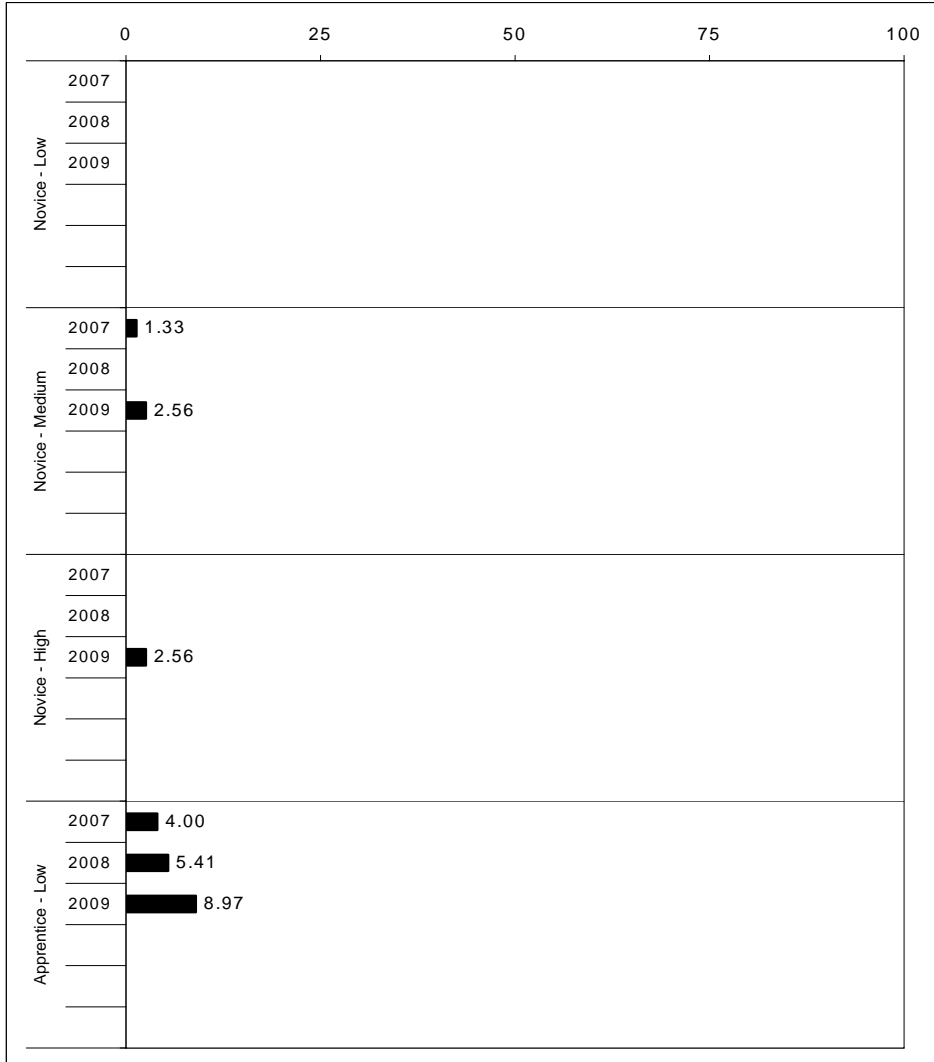
School: Burnside Elementary School
 District: Pulaski County
 Code: 501070
 Grade: 05

	No. Items	No. Observations	SCHOOL								STATE								School -State Mean
			B	0	1	2	3	4	Mean	Std. Err.	No. Observations	B	0	1	2	3	4	Mean	
OPEN RESPONSE																			
1.x.x - Government & Civics	2	91	0	2	26	54	16	1	1.9	0.1	56,903	0	5	37	45	10	2	1.7	0.2
2.x.x - Cultures & Societies	1	13	0	0	0	85	15	0	2.2	0.2	8,151	0	4	21	56	15	4	1.9	0.3
3.x.x - Economics	1	76	0	3	38	51	8	0	1.6	0.1	48,828	0	11	33	41	12	3	1.6	0.0
4.x.x - Geography	2	26	0	4	31	42	23	0	1.8	0.2	16,077	0	9	32	39	17	3	1.7	0.1
5.x.x - Historical Perspective	3	98	0	6	34	55	5	0	1.6	0.1	65,353	0	7	35	46	10	2	1.7	-0.1
MULTIPLE CHOICE																			
1.x.x - Government & Civics	14	492	75	25	0				0.75	0.02	317,571	66	34	0				0.66	0.09
2.x.x - Cultures & Societies	11	328	78	22	0				0.78	0.03	211,383	70	30	0				0.69	0.09
3.x.x - Economics	11	395	77	23	0				0.77	0.02	252,215	73	27	0				0.73	0.04
4.x.x - Geography	16	584	70	30	0				0.70	0.02	374,337	66	34	0				0.66	0.04
5.x.x - Historical Perspective	27	909	75	25	0				0.75	0.02	586,076	69	31	0				0.69	0.06



2008-2009
INTERIM PERFORMANCE REPORT
WRITING ON-DEMAND TREND DATA
Performance Level Percents

School: Burnside Elementary School
 District: Pulaski County
 Code: 501070
 Grade: 05

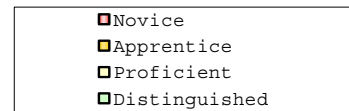
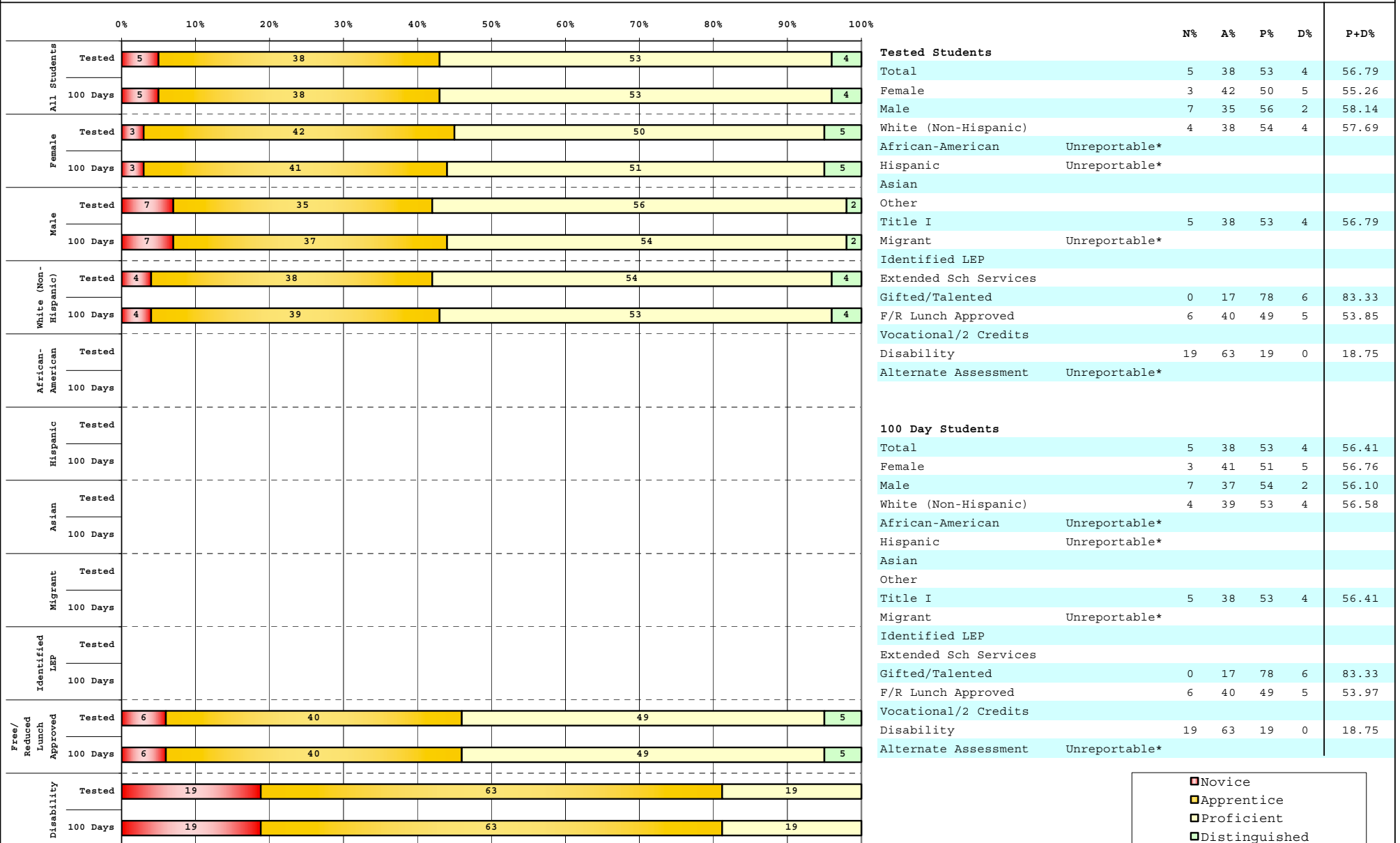


The horizontal bar represents the percent of students scoring at a performance level within a particular year. Percentages may not sum to 100% due to rounding.



**2008-2009
INTERIM PERFORMANCE REPORT
WRITING ON-DEMAND DISAGGREGATION
Performance Level Percents**

School: Burnside Elementary School
District: Pulaski County
Code: 501070
Grade: 05



Percentage may not sum to 100% due to rounding. 'Unreportable*' indicates subpopulations with fewer than 10 students or subpopulations where all students score at the same performance level.



2008-2009
INTERIM PERFORMANCE REPORT
WRITING ON-DEMAND CORE CONTENT

School: Burnside Elementary School
 District: Pulaski County
 Code: 501070
 Grade: 05

WRITING PROMPT	SCHOOL												STATE												School
	No. Observations	Percents											Mean	Percents											Mean
	B	0	1	2	3	4	5	6	7	8		B	0	1	2	3	4	5	6	7	8				
Inform																									
1.X.X - Content	27	0	0	0	22	7	33	30	7	0	0	3.93	0	1	1	9	9	34	18	21	4	2	4.43	-0.50	
2.X.X - Structure	27	0	0	0	22	4	37	30	7	0	0	3.96	0	1	2	9	10	35	19	19	3	1	4.33	-0.37	
3.X.X - Convention	27	0	0	0	22	19	30	22	7	0	0	3.74	0	0	0	12	11	34	19	19	3	1	4.38	-0.64	
Narrate for a purpose																									
1.X.X - Content	25	0	0	4	4	20	48	12	12	0	0	3.96	0	1	1	10	9	36	18	21	3	1	4.35	-0.39	
2.X.X - Structure	25	0	4	0	8	12	52	12	12	0	0	3.92	0	1	2	10	10	37	17	19	3	1	4.27	-0.35	
3.X.X - Convention	25	0	0	0	12	12	56	12	8	0	0	3.92	0	0	0	12	10	36	18	19	3	1	4.33	-0.41	
Persuade																									
1.X.X - Content	24	0	0	0	4	4	42	33	17	0	0	4.54	0	1	1	8	8	33	19	21	5	3	4.50	0.04	
2.X.X - Structure	24	0	0	4	0	8	38	33	17	0	0	4.46	0	2	2	9	10	33	19	20	5	2	4.42	0.04	
3.X.X - Convention	24	0	0	0	4	13	33	33	17	0	0	4.46	0	0	0	11	10	32	19	20	5	2	4.50	-0.04	

MULTIPLE CHOICE	No. Items	SCHOOL							STATE							School
		No. Observations	Percents			Mean	Std. Err.	No. Observations	Percents			Mean	-State Mean			
		Correct	Incorrect	Omit/Mult				Correct	Incorrect	Omit/Mult						
4.x.x - Writing Process	52	77	23	0	0.77	0.01	585,936	73	27	0	0.73	0.04				
4.10.x - Revising	16	69	31	0	0.69	0.03	130,317	66	34	0	0.66	0.03				
4.11.x - Editing	36	79	21	0	0.79	0.02	455,619	75	24	0	0.75	0.04				