



Interim Performance Report

In March 2009, the Kentucky General Assembly passed Senate Bill 1 (SB1) that was subsequently signed into law by the Governor. SB1 calls for a significant overhaul of the state's assessment and accountability system. The new assessment system begins in the spring of 2012. The school years of 2008-2009, 2009-2010 and 2010-2011 are described in SB1 as an interim period. This three-year period allows Kentucky to develop the new assessment system and to carry on state and federal testing requirements.

The Interim Performance Report includes the Kentucky Core Content Test (KCCT) in Reading (grades 3-8 and 10), Mathematics (grades 3-8 and 11), Science (grades 4, 7 and 11), Social Studies (grades 5, 8 and 11) and Writing On-Demand (grades 5, 8 and 12). The KCCT is based on the Kentucky Core Content for Assessment (Version 4.1) and contains multiple choice and open response questions. The Writing On-Demand test uses writing prompts that require students to craft a piece of writing in a 60 minute period.

The KCCT is developed under the direction of content advisory committees of Kentucky educators who draft, review and select test questions. All test items are reviewed by a bias review committee to enhance the fairness of items for all Kentucky students.

The KCCT continues to fulfill the requirements of the federal statute known as the No Child Left Behind Act of 2001. A separate accountability report for No Child Left Behind (NCLB) is published by the Kentucky Department of Education.

The Interim Performance Report focuses entirely on the five state-required content areas and provides data for schools or districts. The data in this report is not used directly for state accountability; although, these results can fulfill the requirements of Senate Bill 168 from 2002 and may be used by schools or districts for their own local accountability needs.

Performance standards are based on descriptions of Novice, Apprentice, Proficient and Distinguished (NAPD) student performance levels specific to the content area and grade being assessed. The performance standards, in conjunction with Kentucky's Core Content for Assessment, should allow instruction to better focus on the content area to be taught and on how well students must demonstrate achievement in each content area.

Reporting Changes for 2009

Based on SB1, Kentucky will not be reporting state accountability and academic indices as in the past. The report does have several familiar pages with performance level (NAPD) trend, core content and disaggregation data per content area. Districts and schools will still see distributions of how students scored in the Novice (with sublevels), Apprentice (with sublevels), Proficient and Distinguished performance levels.

Confidentiality Changes

Due to federal regulations around the Family Education Rights and Privacy Act (FERPA), the numbers of students have been removed. Though there is a need to report as much data as possible, there is also a paramount need to maintain the confidential aspects of individual scores. When scores are reported in what is commonly called "small cells" where very few students may be categorized, there is the possibility of revealing individual scores when numbers are reported. Numbers are reported to each district in a confidential report that accompanies the public Interim Performance Report.

2008-2009

INTERIM PERFORMANCE REPORT

School: Eubank Elementary School
District: Pulaski County
Code: 501180
Grade: PRIMARY-05

CONTENTS OF THIS REPORT

Introduction	1
Academic Trend Data	
Reading Results	2-8
Mathematics Results	9-15
Science Results	16-18
Social Studies Results	19-21
Writing Results	22-24

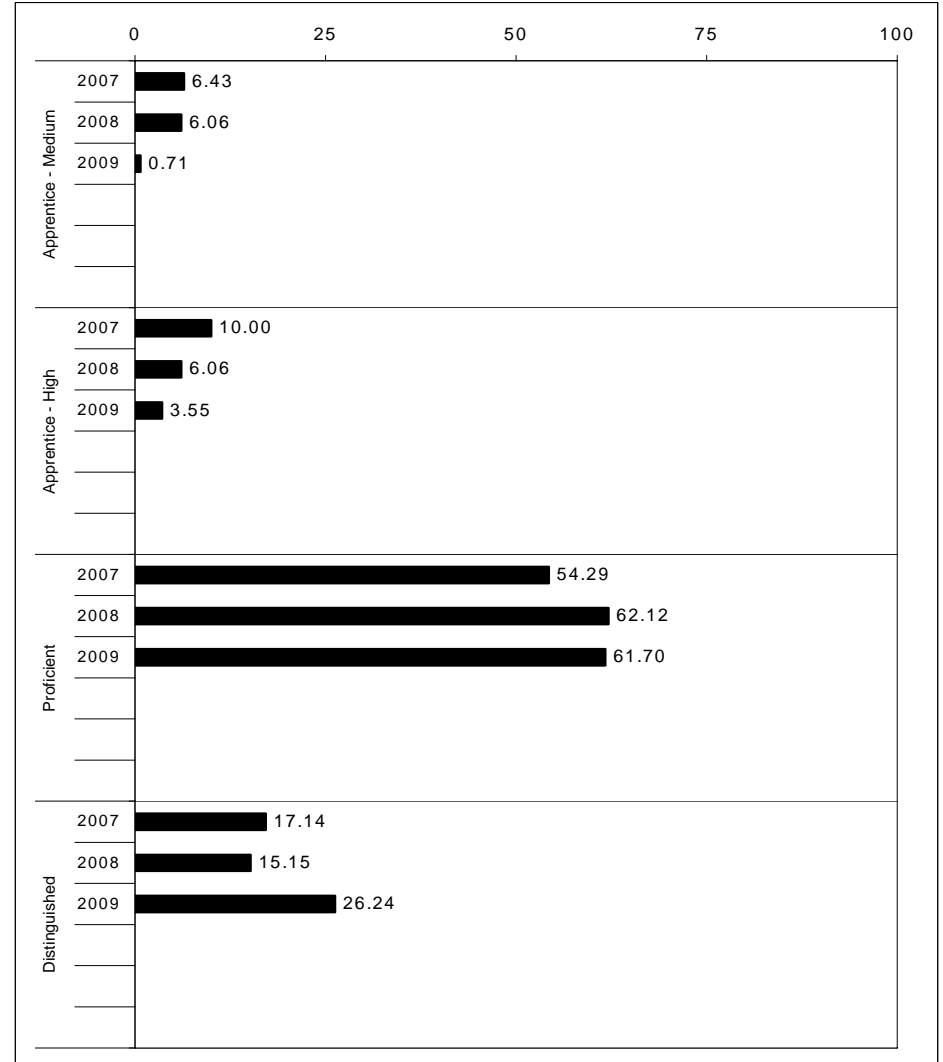
For more information, refer to the 2009 Interim Assessment Interpretative Guide on the Kentucky Department of Education Web site (www.education.ky.gov).





2008-2009
INTERIM PERFORMANCE REPORT
READING TREND DATA
Performance Level Percents

School: Eubank Elementary School
 District: Pulaski County
 Code: 501180
 Grade: ELEMENTARY



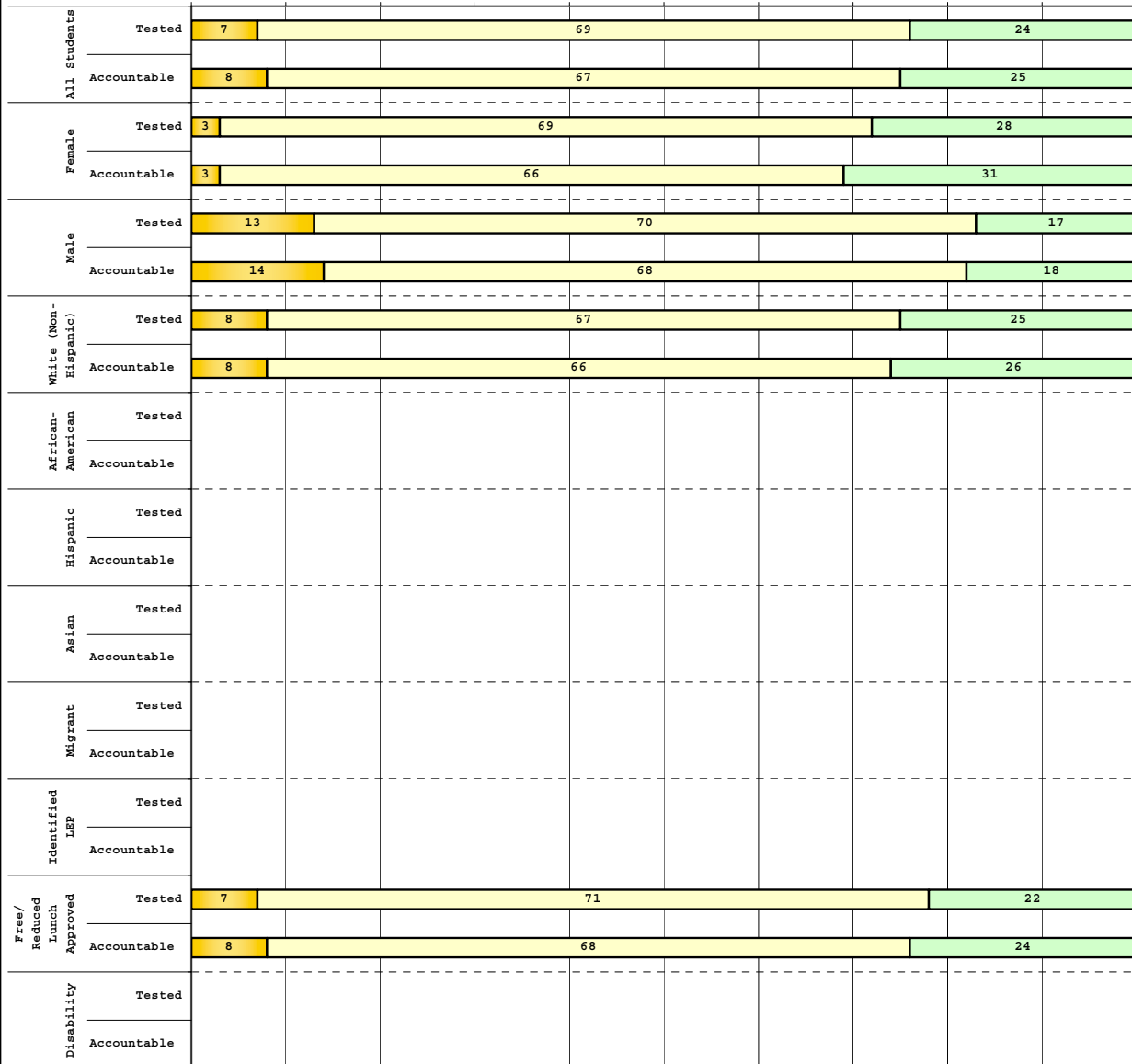
The horizontal bar represents the percent of students scoring at a performance level within a particular year. Percentages may not sum to 100% due to rounding.



**2008-2009
INTERIM PERFORMANCE REPORT
READING DISAGGREGATION
Performance Level Percents**

School: Eubank Elementary School
District: Pulaski County
Code: 501180
Grade: 03

0% 10% 20% 30% 40% 50% 60% 70% 80% 90% 100%



Category	N%	A%	P%	D%	P+D%
Tested Students					
Total	0	7	69	24	92.73
Female	0	3	69	28	96.88
Male	0	13	70	17	86.96
White (Non-Hispanic)	0	8	67	25	92.31
African-American					
Hispanic					Unreportable*
Asian					
Other					Unreportable*
Title I	0	7	69	24	92.73
Migrant					
Identified LEP					Unreportable*
Extended Sch Services					
Gifted/Talented	0	0	59	41	100.00
F/R Lunch Approved	0	7	71	22	92.68
Vocational/2 Credits					
Disability					Unreportable*
Alternate Assessment					
NCLB Accountable Students					
Total	0	8	67	25	92.16
Female	0	3	66	31	96.55
Male	0	14	68	18	86.36
White (Non-Hispanic)	0	8	66	26	92.00
African-American					
Hispanic					
Asian					
Other					Unreportable*
Title I	0	8	67	25	92.16
Migrant					
Identified LEP					
Extended Sch Services					
Gifted/Talented	0	0	59	41	100.00
F/R Lunch Approved	0	8	68	24	91.89
Vocational/2 Credits					
Disability					Unreportable*
Alternate Assessment					

 Novice
 Apprentice
 Proficient
 Distinguished

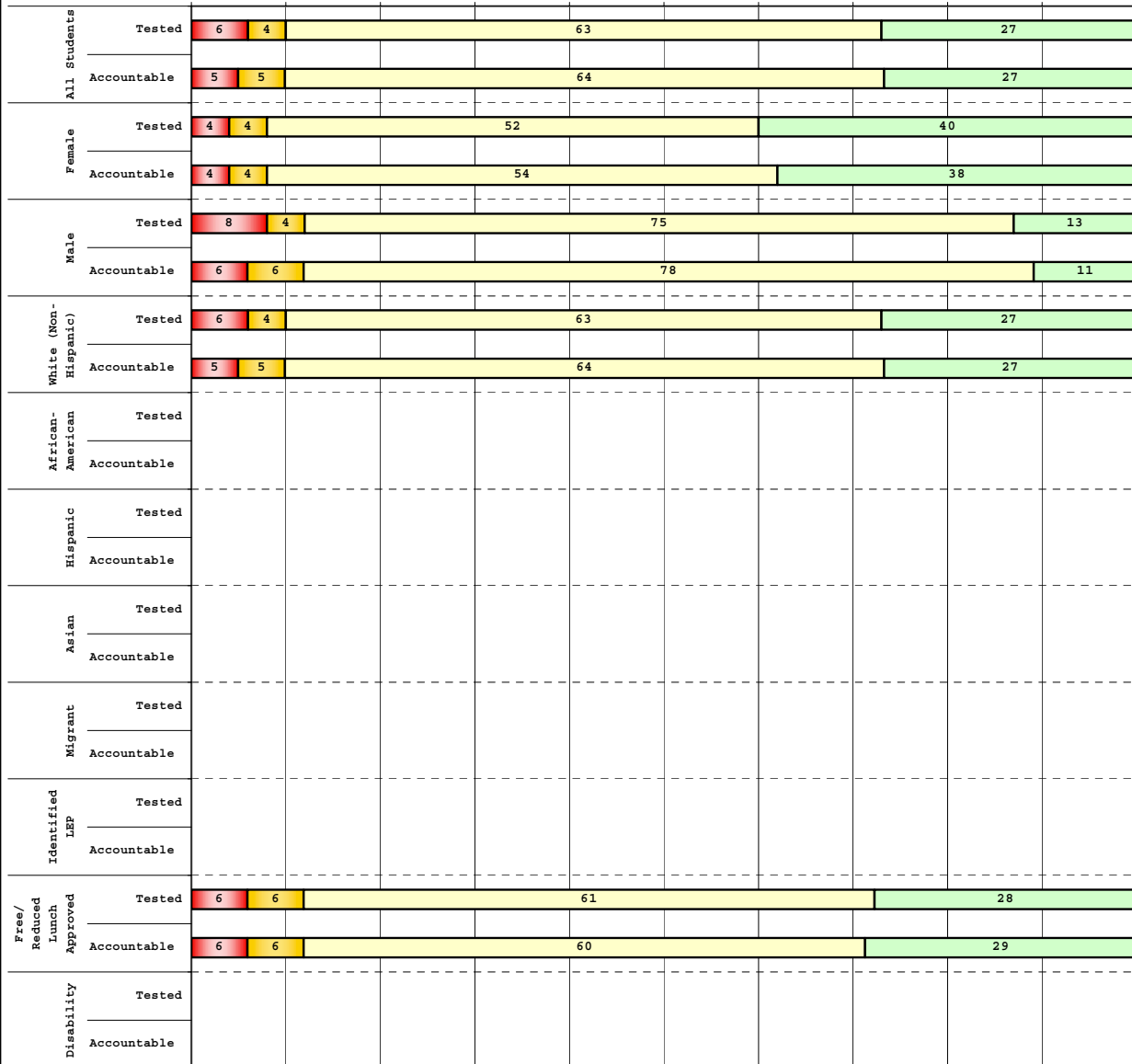
Percentage may not sum to 100% due to rounding. 'Unreportable*' indicates subpopulations with fewer than 10 students or subpopulations where all students score at the same performance level.



2008-2009
INTERIM PERFORMANCE REPORT
READING DISAGGREGATION
Performance Level Percents

School: Eubank Elementary School
 District: Pulaski County
 Code: 501180
 Grade: 04

0% 10% 20% 30% 40% 50% 60% 70% 80% 90% 100%



Category	N%	A%	P%	D%	P+D%
Tested Students					
Total	6	4	63	27	89.80
Female	4	4	52	40	92.00
Male	8	4	75	13	87.50
White (Non-Hispanic)	6	4	63	27	89.58
African-American					
Hispanic					Unreportable*
Asian					
Other					
Title I	6	4	63	27	89.80
Migrant					Unreportable*
Identified LEP					
Extended Sch Services					
Gifted/Talented	0	0	33	67	100.00
F/R Lunch Approved	6	6	61	28	88.89
Vocational/2 Credits					
Disability					Unreportable*
Alternate Assessment					
NCLB Accountable Students					
Total	5	5	64	27	90.91
Female	4	4	54	38	92.31
Male	6	6	78	11	88.89
White (Non-Hispanic)	5	5	64	27	90.91
African-American					
Hispanic					
Asian					
Other					
Title I	5	5	64	27	90.91
Migrant					Unreportable*
Identified LEP					
Extended Sch Services					
Gifted/Talented	0	0	33	67	100.00
F/R Lunch Approved	6	6	60	29	88.57
Vocational/2 Credits					
Disability					Unreportable*
Alternate Assessment					

■ Novice
■ Apprentice
■ Proficient
■ Distinguished

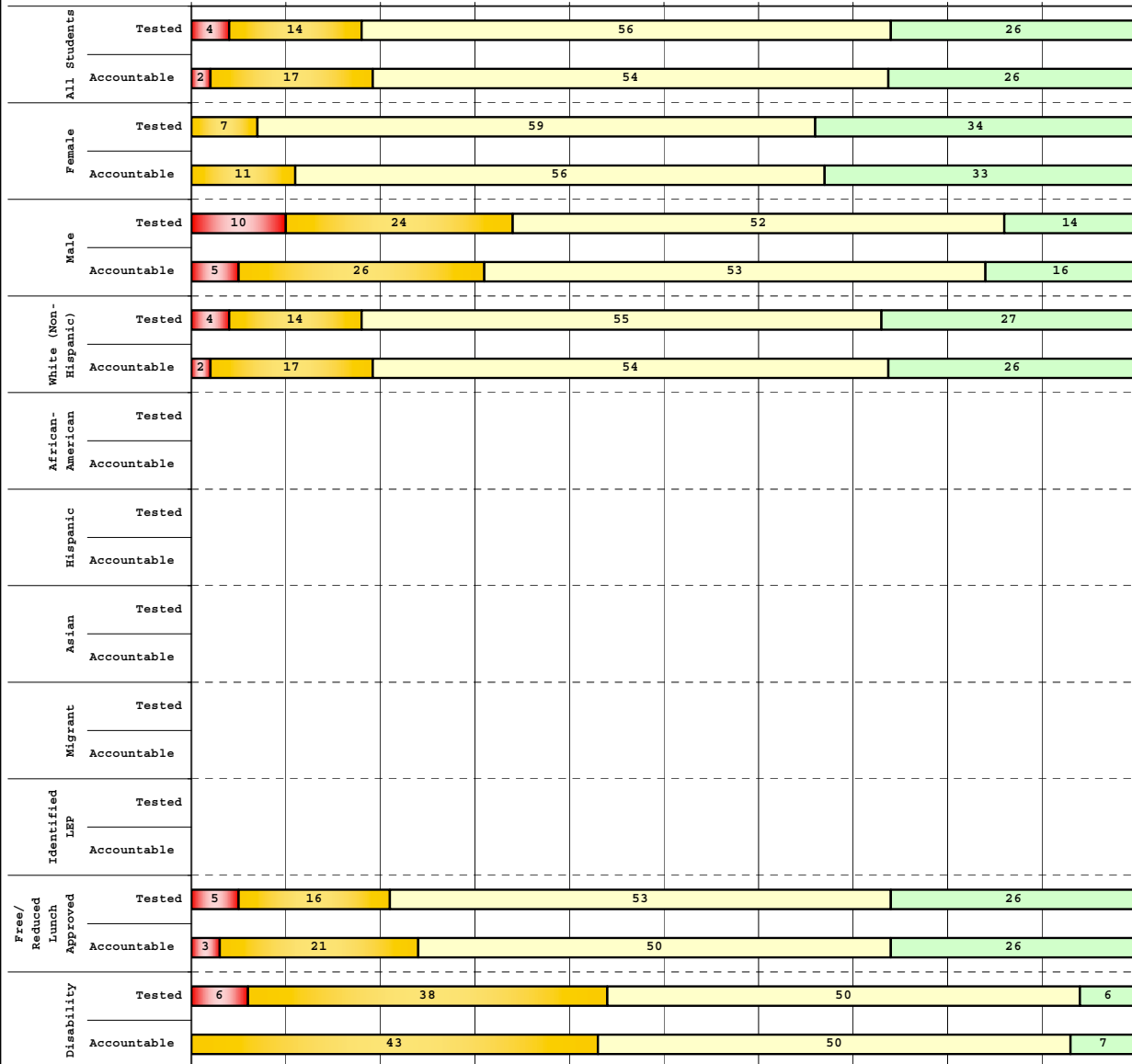
Percentage may not sum to 100% due to rounding. 'Unreportable*' indicates subpopulations with fewer than 10 students or subpopulations where all students score at the same performance level.



**2008-2009
INTERIM PERFORMANCE REPORT
READING DISAGGREGATION
Performance Level Percents**

School: Eubank Elementary School
District: Pulaski County
Code: 501180
Grade: 05

0% 10% 20% 30% 40% 50% 60% 70% 80% 90% 100%



Tested Students					
	N%	A%	P%	D%	P+D%
Total	4	14	56	26	82.00
Female	0	7	59	34	93.10
Male	10	24	52	14	66.67
White (Non-Hispanic)	4	14	55	27	81.63
African-American					
Hispanic	Unreportable*				
Asian					
Other					
Title I	4	14	56	26	82.00
Migrant					
Identified LEP					
Extended Sch Services					
Gifted/Talented	0	0	64	36	100.00
F/R Lunch Approved	5	16	53	26	79.07
Vocational/2 Credits					
Disability	6	38	50	6	56.25
Alternate Assessment					
NCLB Accountable Students					
Total	2	17	54	26	80.43
Female	0	11	56	33	88.89
Male	5	26	53	16	68.42
White (Non-Hispanic)	2	17	54	26	80.43
African-American					
Hispanic					
Asian					
Other					
Title I	2	17	54	26	80.43
Migrant					
Identified LEP					
Extended Sch Services					
Gifted/Talented	0	0	64	36	100.00
F/R Lunch Approved	3	21	50	26	76.32
Vocational/2 Credits					
Disability	0	43	50	7	57.14
Alternate Assessment					

■ Novice
■ Apprentice
■ Proficient
■ Distinguished

Percentage may not sum to 100% due to rounding. 'Unreportable*' indicates subpopulations with fewer than 10 students or subpopulations where all students score at the same performance level.



2008-2009
INTERIM PERFORMANCE REPORT
READING CORE CONTENT

School: Eubank Elementary School
 District: Pulaski County
 Code: 501180
 Grade: 03

	No. Items	No. Observations	SCHOOL								Std. Err.	No. Observations	STATE								School -State Mean
			B	0	1	2	3	4	Mean	B			0	1	2	3	4	Mean			
OPEN RESPONSE																					
2.0.x - Developing Understanding	2	102	0	4	26	59	11	0	1.8	0.1	100,212	0	10	30	44	14	2	1.7	0.1		
3.0.x - Interpreting Text	2	102	0	4	26	59	11	0	1.8	0.1	100,212	0	10	30	44	14	2	1.7	0.1		
MULTIPLE CHOICE																					
1.0.x - Forming a Foundation	32	401	90	10	0				0.90	0.02	392,589	83	17	0				0.83	0.07		
2.0.x - Developing Understanding	89	1,013	89	11	0				0.89	0.01	993,477	80	20	0				0.80	0.09		
3.0.x - Interpreting Text	31	476	85	15	0				0.85	0.02	468,115	77	23	0				0.77	0.08		
5.0.x - Critical Stance	15	207	87	13	0				0.87	0.03	208,359	79	21	0				0.79	0.08		



2008-2009
INTERIM PERFORMANCE REPORT
READING CORE CONTENT

School: Eubank Elementary School
 District: Pulaski County
 Code: 501180
 Grade: 04

	No. Items	No. Observations	SCHOOL							Mean	Std. Err.	No. Observations	STATE						Mean	School -State Mean
			B	0	1	2	3	4	B				0	1	2	3	4			
OPEN RESPONSE																				
2.0.x - Developing Understanding	5	71	0	3	14	48	25	10	2.3	0.1	81,849	0	3	24	52	18	3	1.9	0.4	
3.0.x - Interpreting Text	6	117	0	3	15	41	32	9	2.3	0.1	131,199	0	4	22	45	23	5	2.0	0.3	
MULTIPLE CHOICE																				
1.0.x - Forming a Foundation	34	357	78	22	0				0.78	0.02	401,452	72	28	0				0.71	0.07	
2.0.x - Developing Understanding	76	776	79	21	0				0.79	0.02	868,422	73	27	0				0.73	0.06	
3.0.x - Interpreting Text	29	255	86	14	0				0.86	0.03	278,648	79	21	0				0.79	0.07	
5.0.x - Critical Stance	9	139	81	19	0				0.81	0.04	155,704	74	26	0				0.74	0.07	



**2008-2009
INTERIM PERFORMANCE REPORT
READING CORE CONTENT**

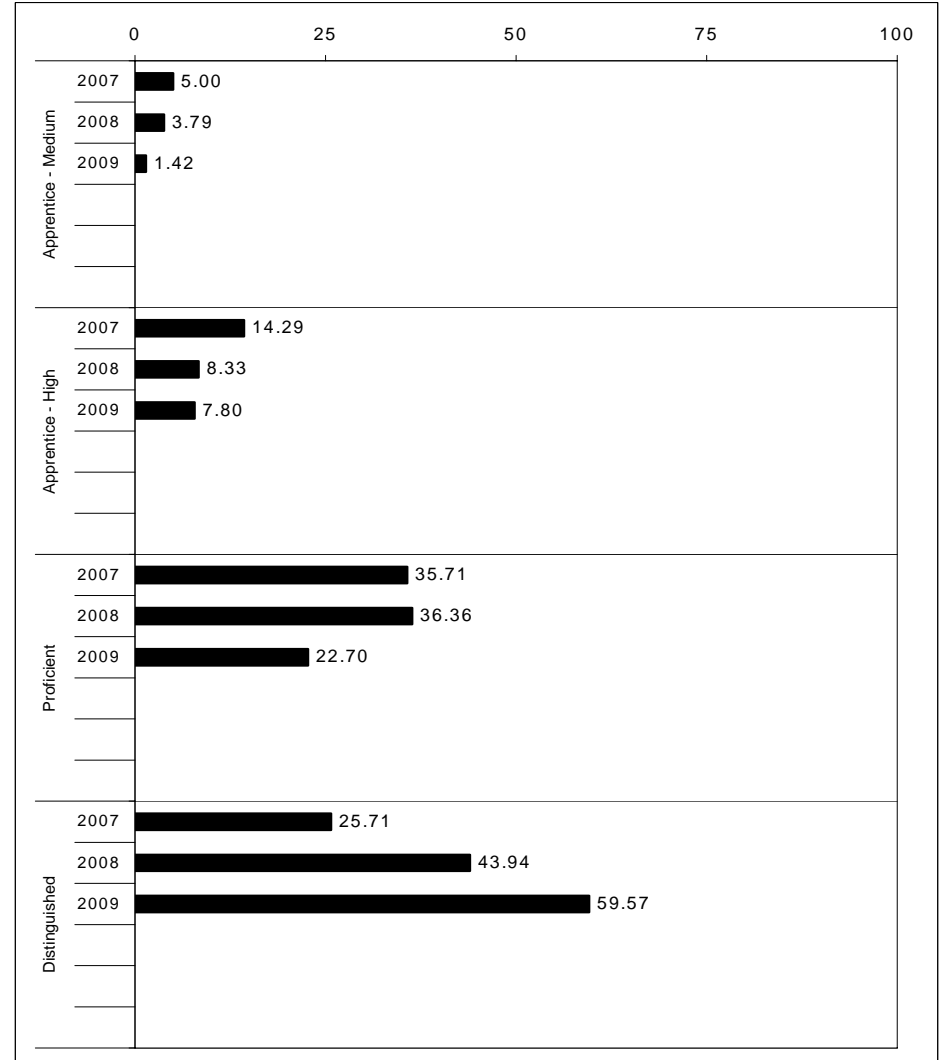
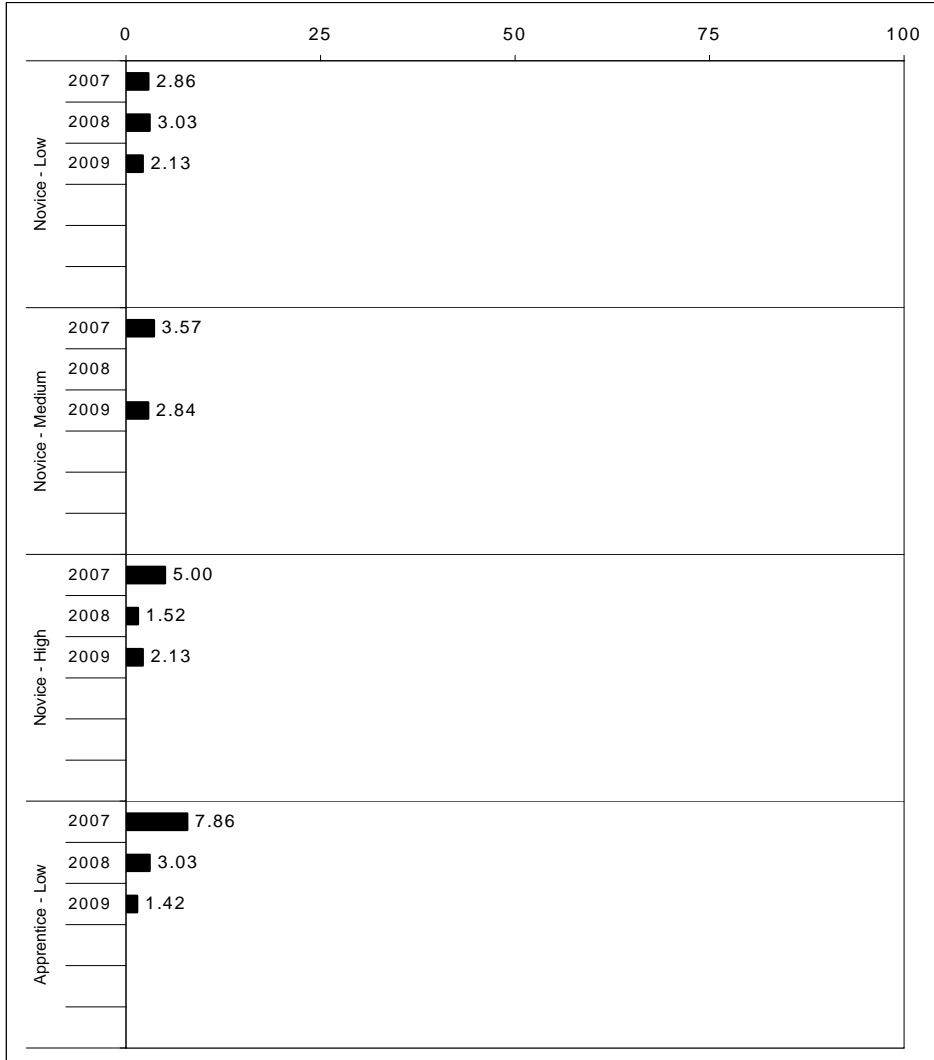
School: Eubank Elementary School
 District: Pulaski County
 Code: 501180
 Grade: 05

	No. Items	No. Observations	SCHOOL							Mean	Std. Err.	No. Observations	STATE							Mean	School -State Mean
			B	0	1	2	3	4	Percents				B	0	1	2	3	4	Percents		
OPEN RESPONSE																					
2.0.x - Developing Understanding	6	86	0	2	16	48	33	1	2.1	0.1	89,507	0	5	23	48	20	5	2.0	0.1		
3.0.x - Interpreting Text	6	121	0	4	14	49	31	2	2.1	0.1	130,403	0	5	21	50	19	4	2.0	0.1		
MULTIPLE CHOICE																					
1.0.x - Forming a Foundation	28	260	77	23	0				0.77	0.03	268,187	74	26	0				0.74	0.03		
2.0.x - Developing Understanding	71	757	78	22	0				0.78	0.01	823,068	80	20	0				0.80	-0.02		
3.0.x - Interpreting Text	27	336	83	17	0				0.83	0.02	341,653	81	19	0				0.81	0.02		
5.0.x - Critical Stance	17	280	78	22	0				0.78	0.03	300,671	75	25	0				0.75	0.03		



2008-2009
INTERIM PERFORMANCE REPORT
MATHEMATICS TREND DATA
Performance Level Percents

School: Eubank Elementary School
 District: Pulaski County
 Code: 501180
 Grade: ELEMENTARY



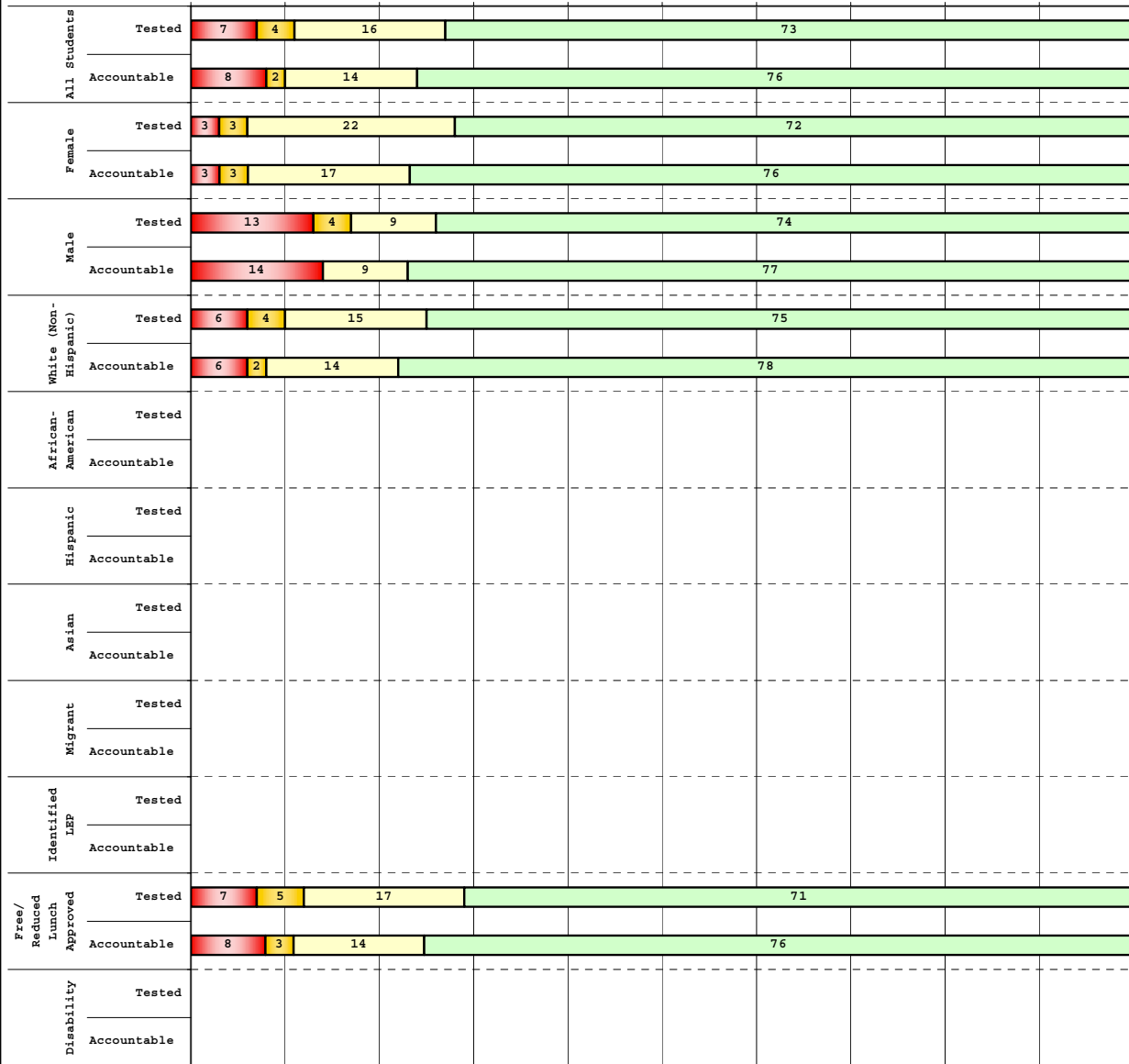
The horizontal bar represents the percent of students scoring at a performance level within a particular year. Percentages may not sum to 100% due to rounding.



2008-2009
INTERIM PERFORMANCE REPORT
MATHEMATICS DISAGGREGATION
Performance Level Percents

School: Eubank Elementary School
 District: Pulaski County
 Code: 501180
 Grade: 03

0% 10% 20% 30% 40% 50% 60% 70% 80% 90% 100%



Category	N%	A%	P%	D%	P+D%
Tested Students					
Total	7	4	16	73	89.09
Female	3	3	22	72	93.75
Male	13	4	9	74	82.61
White (Non-Hispanic)	6	4	15	75	90.38
African-American					
Hispanic					Unreportable*
Asian					
Other					Unreportable*
Title I	7	4	16	73	89.09
Migrant					
Identified LEP					Unreportable*
Extended Sch Services					
Gifted/Talented					Unreportable*
F/R Lunch Approved	7	5	17	71	87.80
Vocational/2 Credits					
Disability					Unreportable*
Alternate Assessment					
NCLB Accountable Students					
Total	8	2	14	76	90.20
Female	3	3	17	76	93.10
Male	14	0	9	77	86.36
White (Non-Hispanic)	6	2	14	78	92.00
African-American					
Hispanic					
Asian					
Other					Unreportable*
Title I	8	2	14	76	90.20
Migrant					
Identified LEP					
Extended Sch Services					
Gifted/Talented					Unreportable*
F/R Lunch Approved	8	3	14	76	89.19
Vocational/2 Credits					
Disability					Unreportable*
Alternate Assessment					

■ Novice
■ Apprentice
■ Proficient
■ Distinguished

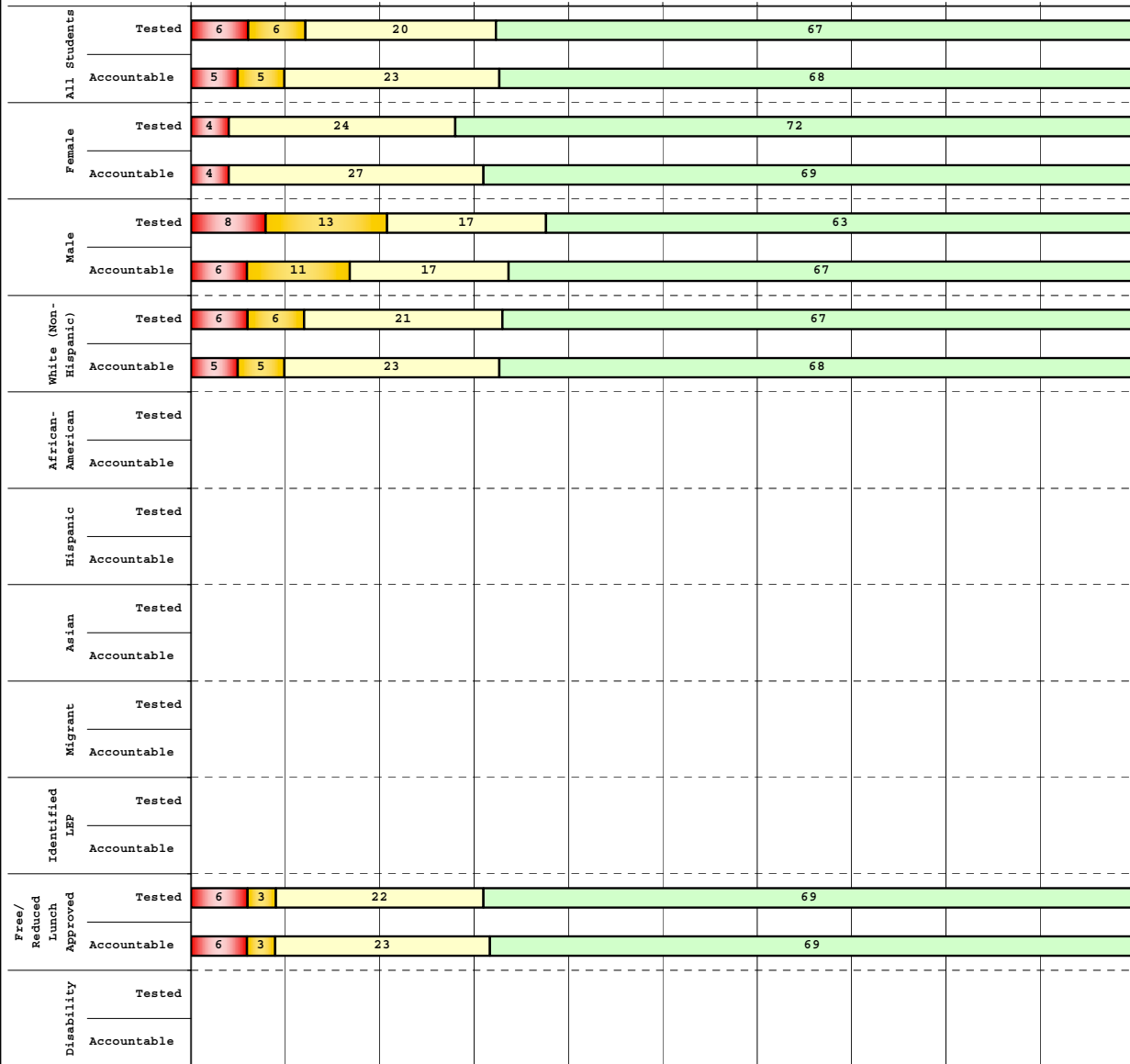
Percentage may not sum to 100% due to rounding. 'Unreportable*' indicates subpopulations with fewer than 10 students or subpopulations where all students score at the same performance level.



2008-2009
INTERIM PERFORMANCE REPORT
MATHEMATICS DISAGGREGATION
Performance Level Percents

School: Eubank Elementary School
 District: Pulaski County
 Code: 501180
 Grade: 04

0% 10% 20% 30% 40% 50% 60% 70% 80% 90% 100%



Category	N%	A%	P%	D%	P+D%
Tested Students					
Total	6	6	20	67	87.76
Female	4	0	24	72	96.00
Male	8	13	17	63	79.17
White (Non-Hispanic)	6	6	21	67	87.50
African-American					
Hispanic					Unreportable*
Asian					
Other					
Title I	6	6	20	67	87.76
Migrant					Unreportable*
Identified LEP					
Extended Sch Services					
Gifted/Talented	0	0	8	92	100.00
F/R Lunch Approved	6	3	22	69	91.67
Vocational/2 Credits					
Disability					Unreportable*
Alternate Assessment					
NCLB Accountable Students					
Total	5	5	23	68	90.91
Female	4	0	27	69	96.15
Male	6	11	17	67	83.33
White (Non-Hispanic)	5	5	23	68	90.91
African-American					
Hispanic					
Asian					
Other					
Title I	5	5	23	68	90.91
Migrant					Unreportable*
Identified LEP					
Extended Sch Services					
Gifted/Talented	0	0	8	92	100.00
F/R Lunch Approved	6	3	23	69	91.43
Vocational/2 Credits					
Disability					Unreportable*
Alternate Assessment					

■ Novice
■ Apprentice
■ Proficient
■ Distinguished

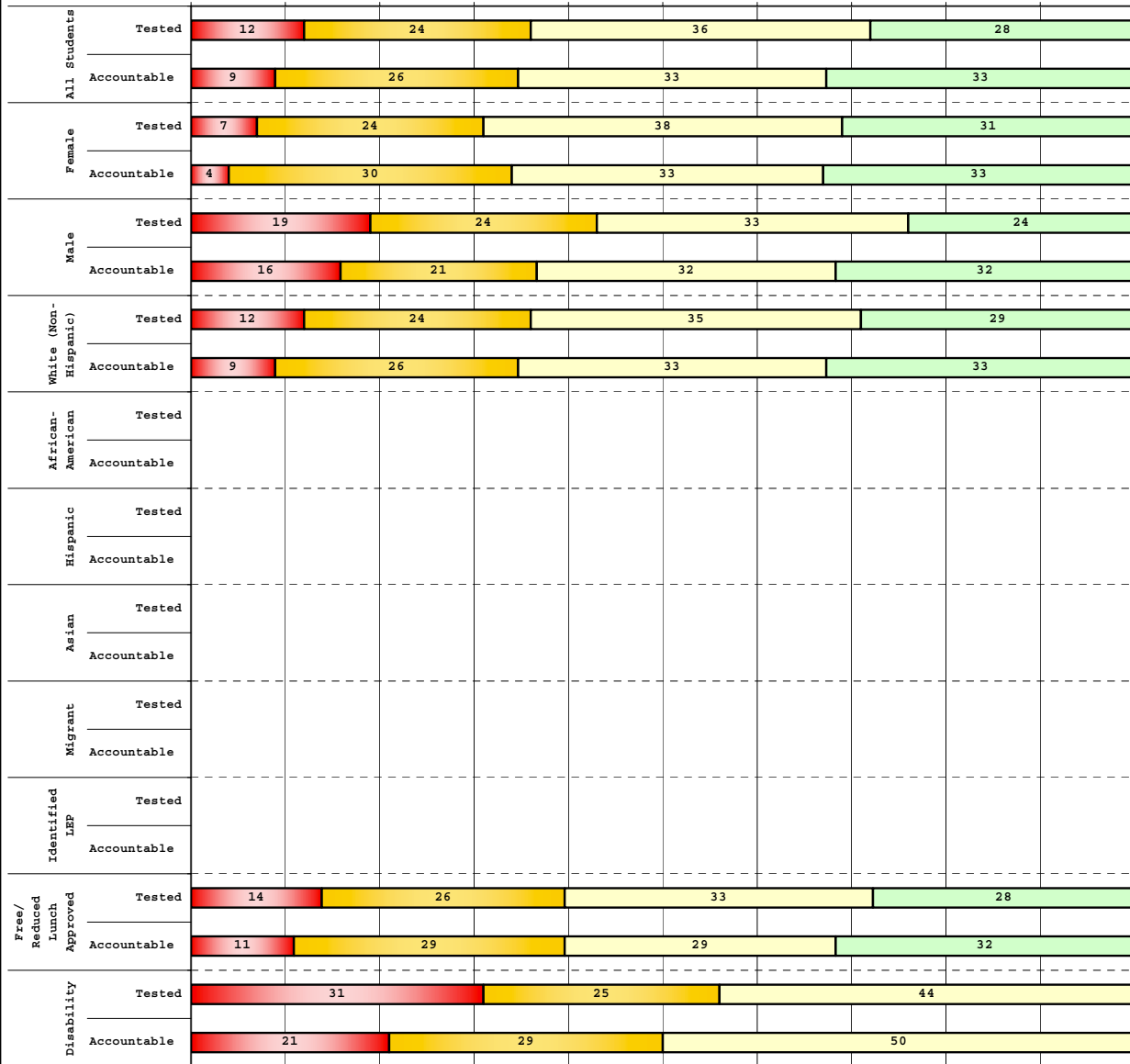
Percentage may not sum to 100% due to rounding. 'Unreportable*' indicates subpopulations with fewer than 10 students or subpopulations where all students score at the same performance level.



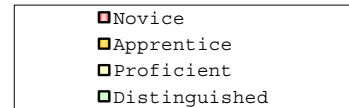
**2008-2009
INTERIM PERFORMANCE REPORT
MATHEMATICS DISAGGREGATION
Performance Level Percents**

School: Eubank Elementary School
District: Pulaski County
Code: 501180
Grade: 05

0% 10% 20% 30% 40% 50% 60% 70% 80% 90% 100%



	N%	A%	P%	D%	P+D%
Tested Students					
Total	12	24	36	28	64.00
Female	7	24	38	31	68.97
Male	19	24	33	24	57.14
White (Non-Hispanic)	12	24	35	29	63.27
African-American					
Hispanic	Unreportable*				
Asian					
Other					
Title I	12	24	36	28	64.00
Migrant					
Identified LEP					
Extended Sch Services					
Gifted/Talented	0	0	43	57	100.00
F/R Lunch Approved	14	26	33	28	60.47
Vocational/2 Credits					
Disability	31	25	44	0	43.75
Alternate Assessment					
NCLB Accountable Students					
Total	9	26	33	33	65.22
Female	4	30	33	33	66.67
Male	16	21	32	32	63.16
White (Non-Hispanic)	9	26	33	33	65.22
African-American					
Hispanic					
Asian					
Other					
Title I	9	26	33	33	65.22
Migrant					
Identified LEP					
Extended Sch Services					
Gifted/Talented	0	0	43	57	100.00
F/R Lunch Approved	11	29	29	32	60.53
Vocational/2 Credits					
Disability	21	29	50	0	50.00
Alternate Assessment					



Percentage may not sum to 100% due to rounding. 'Unreportable*' indicates subpopulations with fewer than 10 students or subpopulations where all students score at the same performance level.



2008-2009
INTERIM PERFORMANCE REPORT
MATHEMATICS CORE CONTENT

School: Eubank Elementary School
 District: Pulaski County
 Code: 501180
 Grade: 03

	No. Items	No. Observations	SCHOOL							Mean	Std. Err.	No. Observations	STATE							Mean	School -State Mean
			B	0	1	2	3	4	Percents				B	0	1	2	3	4	Percents		
OPEN RESPONSE																					
1.x.x - Number Prop Oper	5	129	0	12	19	33	20	16	2.1	0.1	125,243	0	21	35	26	10	8	1.5	0.6		
2.x.x - Measurement	1	9							***		8,325	0	25	5	30	14	25	2.1			
3.x.x - Geometry	2	16	0	0	6	31	13	50	3.1	0.3	16,777	0	8	24	35	13	20	2.1	1.0		
4.x.x - Data Analysis & Probabilit	1	51	0	4	6	8	12	71	3.4	0.2	50,106	0	9	13	19	27	32	2.6	0.8		
5.x.x - Algebraic Thinking	2	59	0	7	8	7	15	63	3.2	0.2	58,404	0	9	14	19	28	31	2.6	0.6		
MULTIPLE CHOICE																					
1.x.x - Number Prop Oper	32	823	83	17	0				0.83	0.02	810,106	74	26	0				0.74	0.09		
2.x.x - Measurement	7	188	88	12	0				0.88	0.03	183,647	81	18	0				0.81	0.07		
3.x.x - Geometry	18	408	91	9	0				0.91	0.02	400,848	85	15	0				0.85	0.06		
4.x.x - Data Analysis & Probabilit	8	196	85	15	0				0.85	0.03	192,126	69	31	0				0.69	0.16		
5.x.x - Algebraic Thinking	11	221	88	12	0				0.88	0.03	217,089	78	22	0				0.78	0.10		



2008-2009
INTERIM PERFORMANCE REPORT
MATHEMATICS CORE CONTENT

School: Eubank Elementary School
 District: Pulaski County
 Code: 501180
 Grade: 04

	No. Items	No. Observations	SCHOOL							Mean	Std. Err.	No. Observations	STATE						Mean	School -State Mean
			B	0	1	2	3	4	Percents				B	0	1	2	3	4		
OPEN RESPONSE																				
1.x.x - Number Prop Oper	4	66	0	8	17	33	26	17	2.3	0.2	73,656	0	17	24	29	19	12	1.9	0.4	
2.x.x - Measurement	1	7							***		8,195	0	43	13	10	20	13	1.5		
3.x.x - Geometry	2	49	0	2	24	8	22	43	2.8	0.2	57,352	0	11	20	17	19	33	2.4	0.4	
4.x.x - Data Analysis & Probabilit	1	9							***		8,152	0	5	36	29	23	6	1.9		
5.x.x - Algebraic Thinking	2	52	0	4	10	35	33	19	2.5	0.1	57,508	0	5	27	32	25	11	2.1	0.4	
MULTIPLE CHOICE																				
1.x.x - Number Prop Oper	31	596	78	22	0				0.78	0.02	664,194	67	33	0				0.67	0.11	
2.x.x - Measurement	7	126	79	21	0				0.79	0.04	139,170	62	38	0				0.62	0.17	
3.x.x - Geometry	14	252	88	12	0				0.88	0.03	278,460	77	23	0				0.77	0.11	
4.x.x - Data Analysis & Probabilit	12	270	85	15	0				0.85	0.03	303,394	71	29	0				0.71	0.14	
5.x.x - Algebraic Thinking	11	223	87	13	0				0.87	0.03	253,829	69	31	0				0.69	0.18	



2008-2009
INTERIM PERFORMANCE REPORT
MATHEMATICS CORE CONTENT

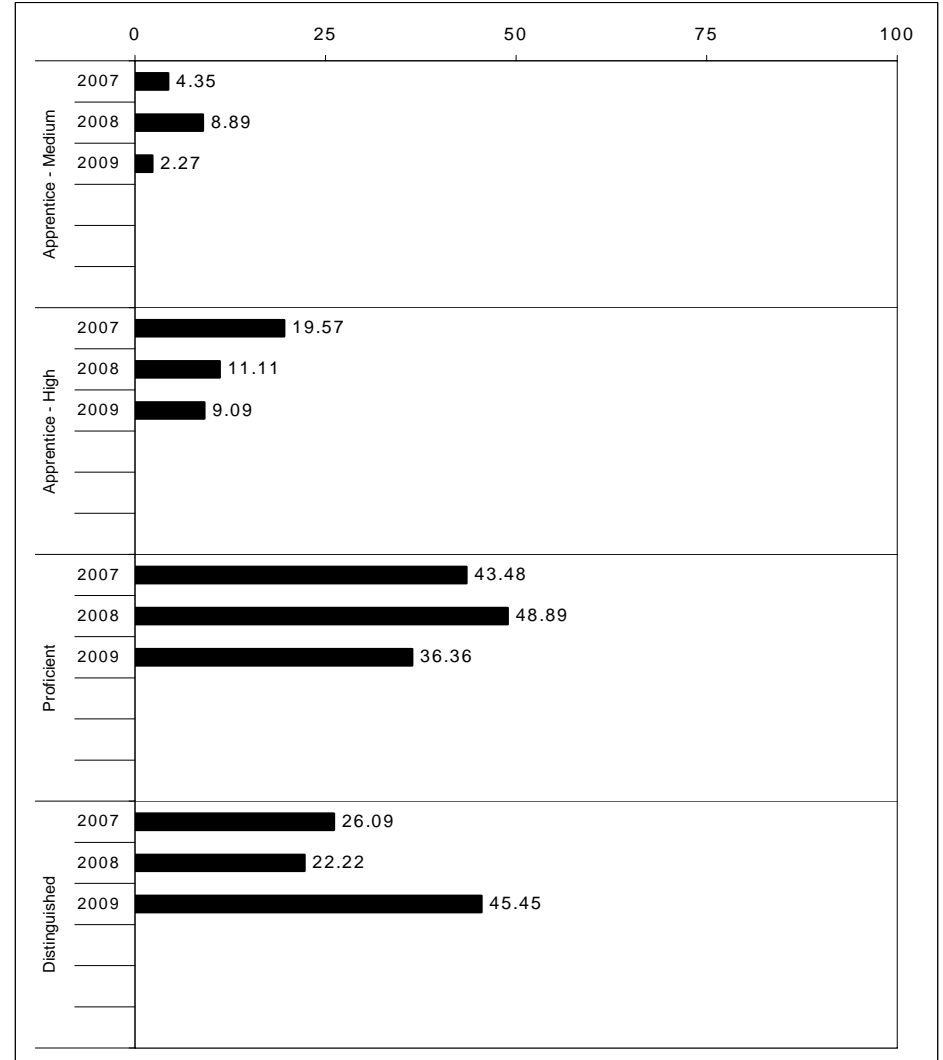
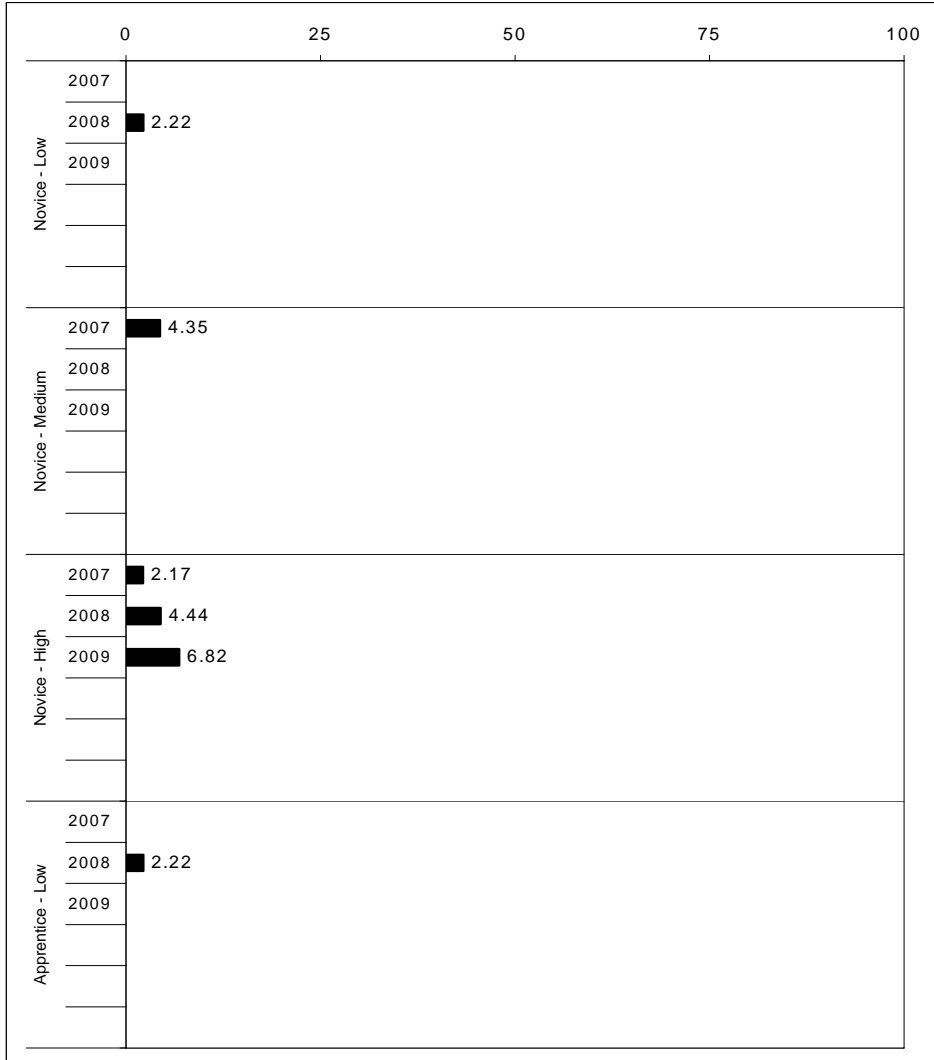
School: Eubank Elementary School
 District: Pulaski County
 Code: 501180
 Grade: 05

	No. Items	No. Observations	SCHOOL							Mean	Std. Err.	No. Observations	STATE							Mean	School -State Mean
			B	0	1	2	3	4	Percents				B	0	1	2	3	4	Percents		
OPEN RESPONSE																					
1.x.x - Number Prop Oper	4	68	0	7	13	18	25	37	2.7	0.2	73,199	0	8	20	18	25	29	2.5	0.2		
2.x.x - Measurement	1	7							***		8,380	0	37	30	13	10	11	1.3			
3.x.x - Geometry	2	56	0	13	14	27	29	18	2.3	0.1	56,900	0	6	24	30	26	14	2.2	0.1		
4.x.x - Data Analysis & Probabilit	1	46	0	11	13	4	11	61	3.0	0.2	48,828	0	15	18	15	17	35	2.4	0.6		
5.x.x - Algebraic Thinking	1	7							***		8,005	0	13	15	20	17	35	2.5			
MULTIPLE CHOICE																					
1.x.x - Number Prop Oper	29	605	61	38	0				0.61	0.02	643,144	63	37	0				0.63	-0.02		
2.x.x - Measurement	9	145	56	44	0				0.56	0.04	154,489	62	38	0				0.62	-0.06		
3.x.x - Geometry	14	259	79	21	0				0.79	0.03	276,516	78	22	0				0.78	0.01		
4.x.x - Data Analysis & Probabilit	11	240	65	35	0				0.65	0.03	252,212	64	36	0				0.64	0.01		
5.x.x - Algebraic Thinking	10	230	63	37	0				0.63	0.03	244,140	65	35	0				0.65	-0.02		



2008-2009
INTERIM PERFORMANCE REPORT
SCIENCE TREND DATA
Performance Level Percents

School: Eubank Elementary School
 District: Pulaski County
 Code: 501180
 Grade: 04



The horizontal bar represents the percent of students scoring at a performance level within a particular year. Percentages may not sum to 100% due to rounding.



**2008-2009
INTERIM PERFORMANCE REPORT
SCIENCE DISAGGREGATION
Performance Level Percents**

School: Eubank Elementary School
District: Pulaski County
Code: 501180
Grade: 04

		0%	10%	20%	30%	40%	50%	60%	70%	80%	90%	100%	N%	A%	P%	D%	P+D%		
All Students	Tested	8	8	39				45											
	100 Days	7	11	36				45											
Female	Tested	4	12	40				44											
	100 Days	4	15	38				42											
Male	Tested	13	4	38				46											
	100 Days	11	6	33				50											
White (Non-Hispanic)	Tested	8	8	38				46											
	100 Days	7	11	36				45											
African-American	Tested																		
African-American	100 Days																		
Hispanic	Tested																		
Hispanic	100 Days																		
Asian	Tested																		
Asian	100 Days																		
Migrant	Tested																		
Migrant	100 Days																		
Identified LEP	Tested																		
Identified LEP	100 Days																		
Free/Reduced Lunch Approved	Tested	8	11	42				39											
	100 Days	9	11	40				40											
Disability	Tested																		
Disability	100 Days																		

		N%	A%	P%	D%	P+D%
Tested Students						
Total		8	8	39	45	83.67
Female		4	12	40	44	84.00
Male		13	4	38	46	83.33
White (Non-Hispanic)		8	8	38	46	83.33
African-American						
Hispanic	Unreportable*					
Asian						
Other						
Title I		8	8	39	45	83.67
Migrant	Unreportable*					
Identified LEP						
Extended Sch Services						
Gifted/Talented		0	0	25	75	100.00
F/R Lunch Approved		8	11	42	39	80.56
Vocational/2 Credits						
Disability	Unreportable*					
Alternate Assessment						
100 Day Students						
Total		7	11	36	45	81.82
Female		4	15	38	42	80.77
Male		11	6	33	50	83.33
White (Non-Hispanic)		7	11	36	45	81.82
African-American						
Hispanic						
Asian						
Other						
Title I		7	11	36	45	81.82
Migrant	Unreportable*					
Identified LEP						
Extended Sch Services						
Gifted/Talented		0	0	25	75	100.00
F/R Lunch Approved		9	11	40	40	80.00
Vocational/2 Credits						
Disability	Unreportable*					
Alternate Assessment						

- Novice
- Apprentice
- Proficient
- Distinguished

Percentage may not sum to 100% due to rounding. 'Unreportable*' indicates subpopulations with fewer than 10 students or subpopulations where all students score at the same performance level.



2008-2009
INTERIM PERFORMANCE REPORT
SCIENCE CORE CONTENT

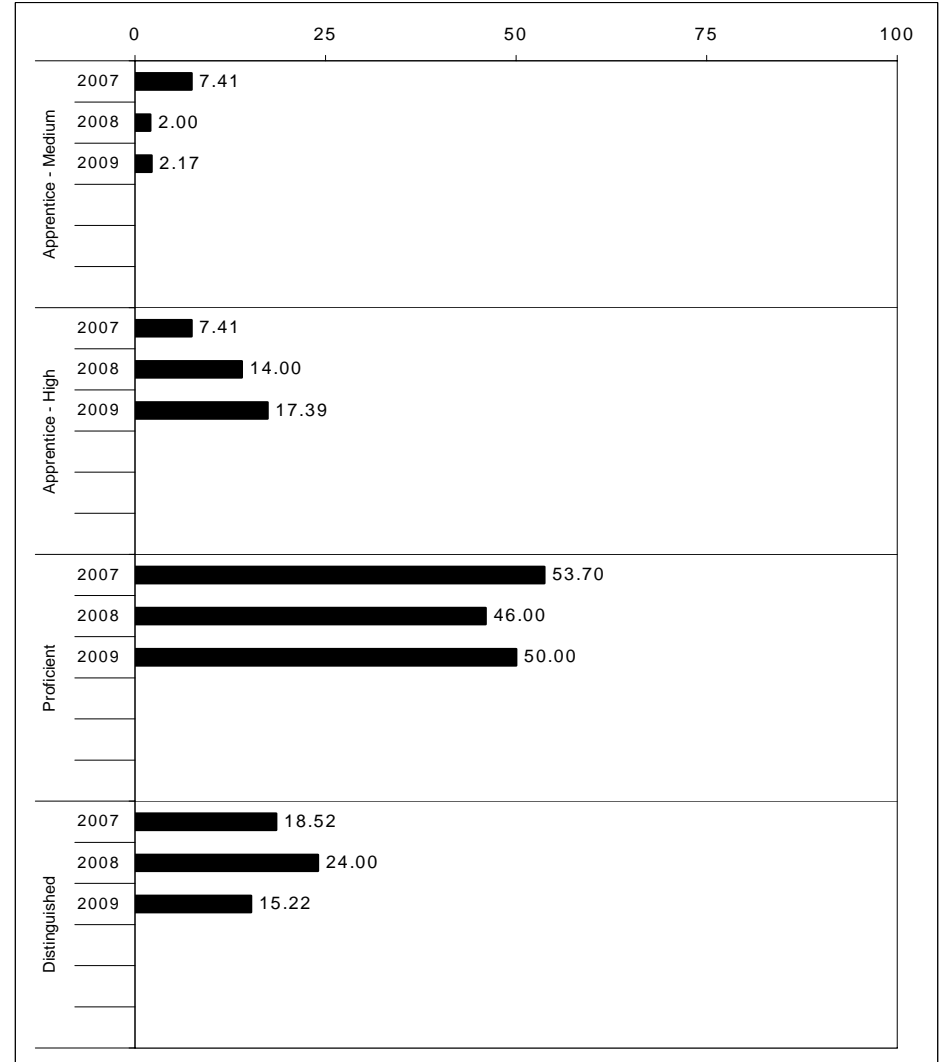
School: Eubank Elementary School
 District: Pulaski County
 Code: 501180
 Grade: 04

	No. Items	No. Observations	SCHOOL								Std. Err.	No. Observations	STATE								School -State Mean
			B	0	1	2	3	4	Mean	B			0	1	2	3	4	Mean			
OPEN RESPONSE																					
1.x.x - Physical Science	2	14	0	21	36	36	7	0	1.3	0.3	16,337	0	17	19	42	17	5	1.7	-0.4		
2.x.x - Earth Space Science	3	58	0	3	17	48	22	9	2.2	0.1	65,658	0	12	22	35	26	4	1.9	0.3		
3.x.x - Biological Science	3	60	0	0	8	28	50	13	2.7	0.1	65,506	0	2	11	33	44	9	2.5	0.2		
4.x.x - Unifying Concepts	2	52	0	0	6	19	31	44	3.1	0.1	57,508	0	3	13	33	35	15	2.5	0.6		
MULTIPLE CHOICE																					
			Correct	Incorrect	Omit/Mult							Correct	Incorrect	Omit/Mult							
1.x.x - Physical Science	18	352	82	19	0	0.82	0.02	393,336	82	18	0	0.81	0.01								
2.x.x - Earth Space Science	19	361	77	23	0	0.77	0.02	401,488	71	29	0	0.71	0.06								
3.x.x - Biological Science	22	419	81	19	0	0.81	0.02	467,138	78	22	0	0.78	0.03								
4.x.x - Unifying Concepts	14	285	86	14	0	0.86	0.02	319,534	84	15	0	0.84	0.02								



2008-2009
INTERIM PERFORMANCE REPORT
SOCIAL STUDIES TREND DATA
Performance Level Percents

School: Eubank Elementary School
 District: Pulaski County
 Code: 501180
 Grade: 05

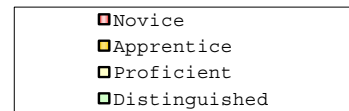
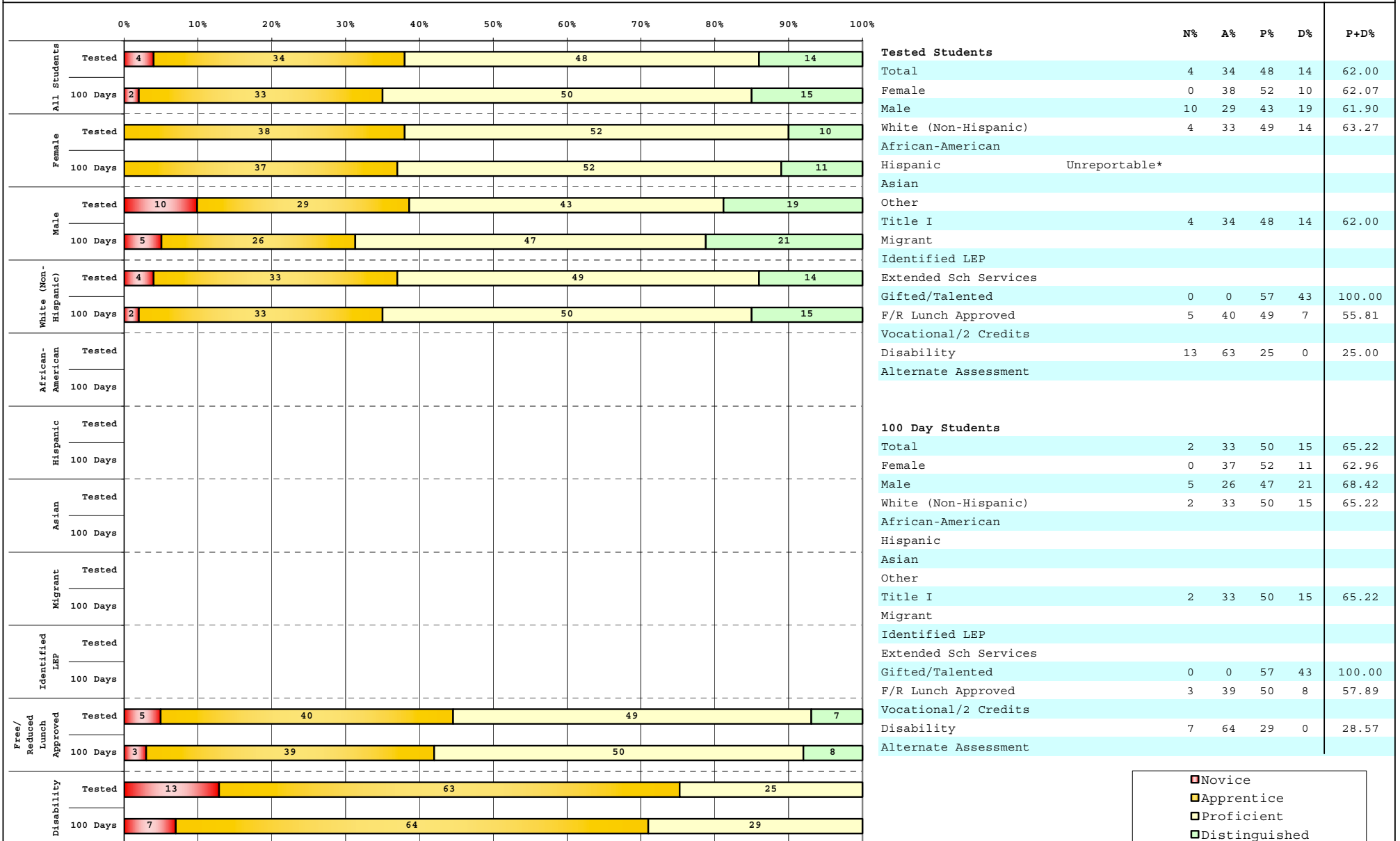


The horizontal bar represents the percent of students scoring at a performance level within a particular year. Percentages may not sum to 100% due to rounding.



**2008-2009
INTERIM PERFORMANCE REPORT
SOCIAL STUDIES DISAGGREGATION
Performance Level Percents**

School: Eubank Elementary School
District: Pulaski County
Code: 501180
Grade: 05



Percentage may not sum to 100% due to rounding. 'Unreportable*' indicates subpopulations with fewer than 10 students or subpopulations where all students score at the same performance level.



2008-2009
INTERIM PERFORMANCE REPORT
SOCIAL STUDIES CORE CONTENT

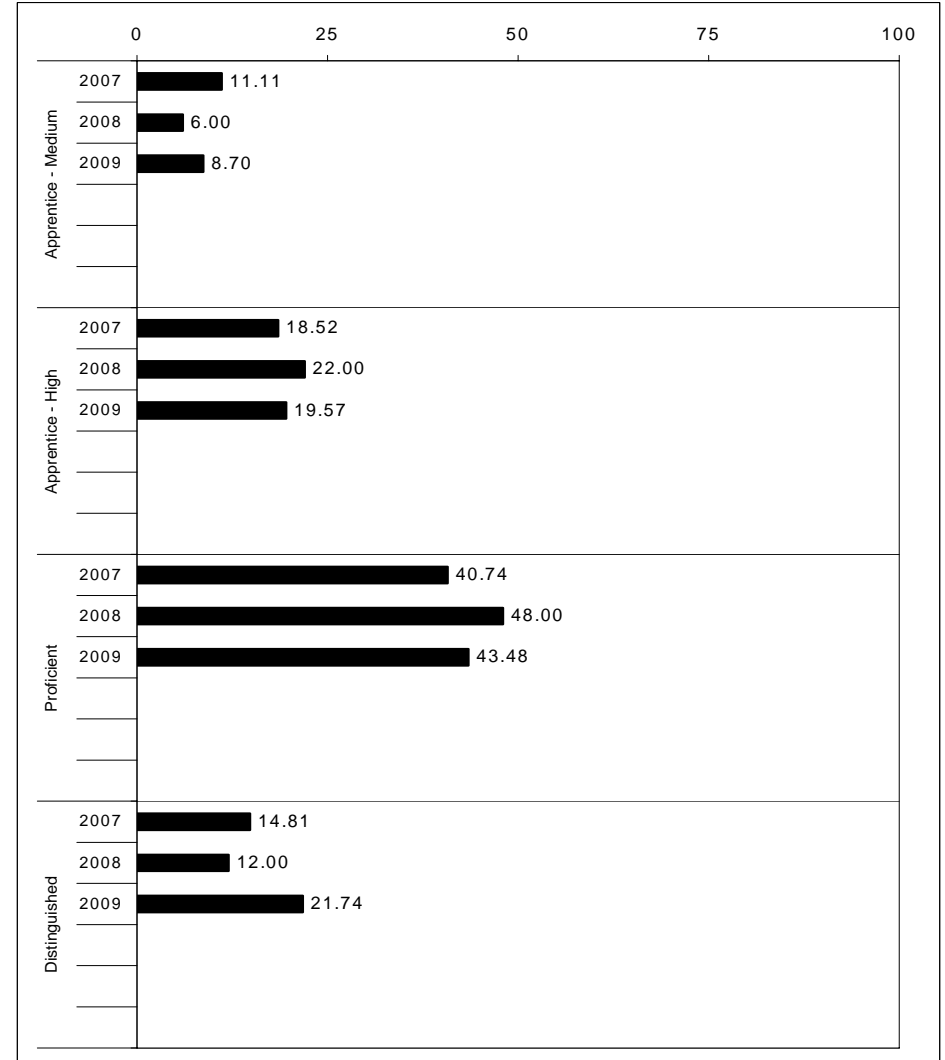
School: Eubank Elementary School
 District: Pulaski County
 Code: 501180
 Grade: 05

	No. Items	No. Observations	SCHOOL							Std. Err.	No. Observations	STATE							School -State Mean
			B	0	1	2	3	4	Mean			B	0	1	2	3	4	Mean	
OPEN RESPONSE																			
1.x.x - Government & Civics	2	55	0	2	42	40	15	2	1.7	0.1	56,903	0	5	37	45	10	2	1.7	0.0
2.x.x - Cultures & Societies	1	7							***		8,151	0	4	21	56	15	4	1.9	
3.x.x - Economics	1	46	0	13	43	30	9	4	1.5	0.1	48,828	0	11	33	41	12	3	1.6	-0.1
4.x.x - Geography	2	17	0	6	18	53	18	6	2.0	0.2	16,077	0	9	32	39	17	3	1.7	0.3
5.x.x - Historical Perspective	3	59	0	12	36	42	10	0	1.5	0.1	65,353	0	7	35	46	10	2	1.7	-0.2
MULTIPLE CHOICE																			
1.x.x - Government & Civics	14	300	71	29	0				0.71	0.03	317,571	66	34	0				0.66	0.05
2.x.x - Cultures & Societies	11	200	77	23	0				0.77	0.03	211,383	70	30	0				0.69	0.08
3.x.x - Economics	11	239	80	20	0				0.80	0.03	252,215	73	27	0				0.73	0.07
4.x.x - Geography	16	350	73	27	0				0.73	0.03	374,337	66	34	0				0.66	0.07
5.x.x - Historical Perspective	27	551	73	27	0				0.73	0.02	586,076	69	31	0				0.69	0.04



2008-2009
INTERIM PERFORMANCE REPORT
WRITING ON-DEMAND TREND DATA
Performance Level Percents

School: Eubank Elementary School
 District: Pulaski County
 Code: 501180
 Grade: 05

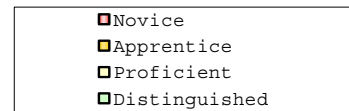
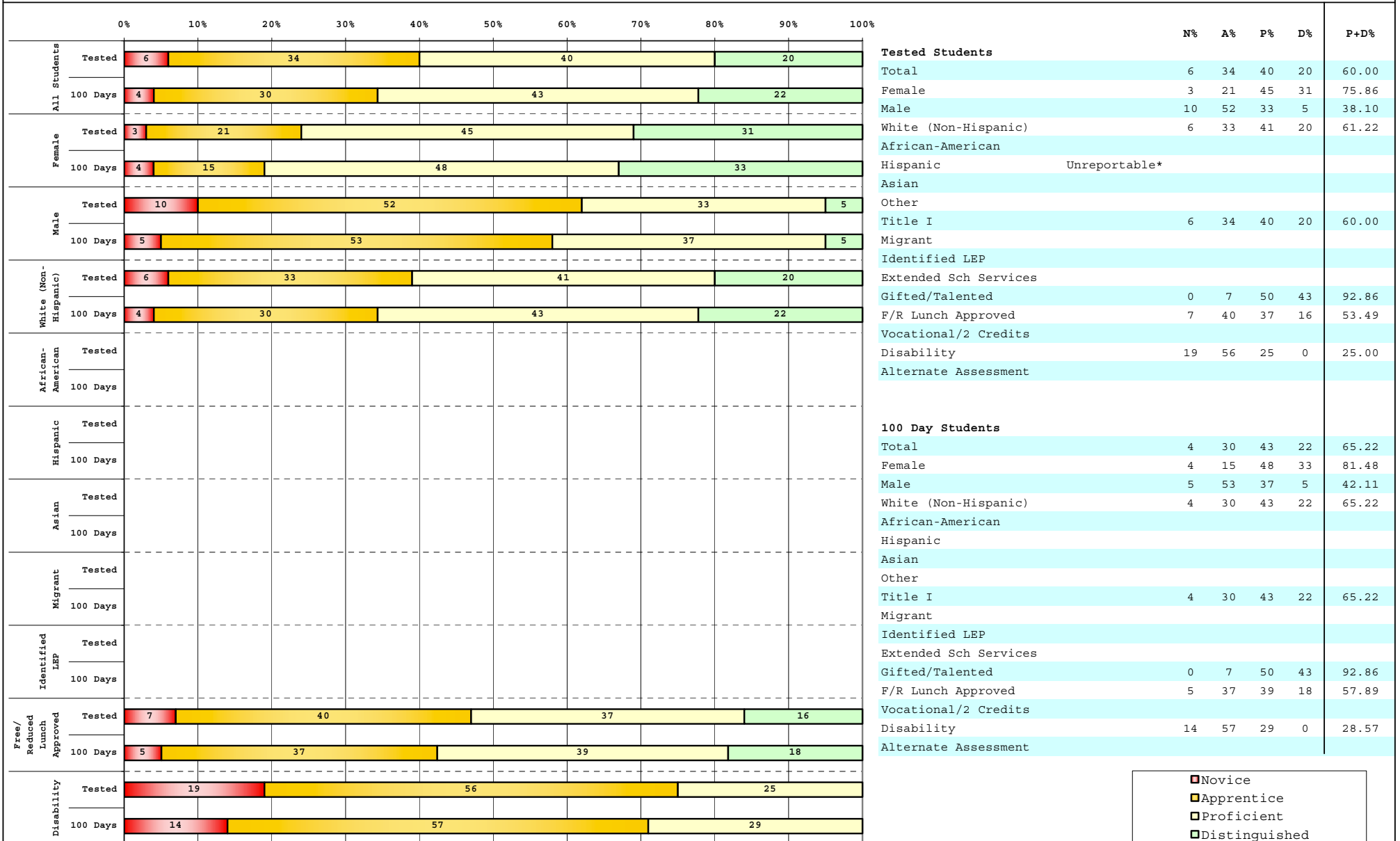


The horizontal bar represents the percent of students scoring at a performance level within a particular year. Percentages may not sum to 100% due to rounding.



2008-2009
INTERIM PERFORMANCE REPORT
WRITING ON-DEMAND DISAGGREGATION
Performance Level Percents

School: Eubank Elementary School
 District: Pulaski County
 Code: 501180
 Grade: 05



Percentage may not sum to 100% due to rounding. 'Unreportable*' indicates subpopulations with fewer than 10 students or subpopulations where all students score at the same performance level.



2008-2009
INTERIM PERFORMANCE REPORT
WRITING ON-DEMAND CORE CONTENT

School: Eubank Elementary School
 District: Pulaski County
 Code: 501180
 Grade: 05

WRITING PROMPT	SCHOOL												STATE												School -State Mean
	No. Observations	Percents											Mean	Percents											
	B	0	1	2	3	4	5	6	7	8	Mean	B	0	1	2	3	4	5	6	7	8	Mean			
Inform																									
1.X.X - Content	20	0	0	5	5	10	35	15	20	5	5	4.55	0	1	1	9	9	34	18	21	4	2	4.43	0.12	
2.X.X - Structure	20	0	5	0	5	10	35	10	25	5	5	4.55	0	1	2	9	10	35	19	19	3	1	4.33	0.22	
3.X.X - Convention	20	0	0	0	10	15	35	10	25	5	0	4.40	0	0	0	12	11	34	19	19	3	1	4.38	0.02	
Narrate for a purpose																									
1.X.X - Content	13	0	0	0	0	0	31	31	31	0	8	5.23	0	1	1	10	9	36	18	21	3	1	4.35	0.88	
2.X.X - Structure	13	0	0	0	0	8	23	38	31	0	0	4.92	0	1	2	10	10	37	17	19	3	1	4.27	0.65	
3.X.X - Convention	13	0	0	0	0	8	38	8	38	0	8	5.08	0	0	0	12	10	36	18	19	3	1	4.33	0.75	
Persuade																									
1.X.X - Content	13	0	8	0	0	0	8	23	23	31	8	5.62	0	1	1	8	8	33	19	21	5	3	4.50	1.12	
2.X.X - Structure	13	0	8	0	0	0	15	15	38	15	8	5.38	0	2	2	9	10	33	19	20	5	2	4.42	0.96	
3.X.X - Convention	13	0	0	0	8	0	23	31	15	15	8	5.23	0	0	0	11	10	32	19	20	5	2	4.50	0.73	

MULTIPLE CHOICE	No. Items	SCHOOL							STATE							School -State Mean
		No. Observations	Percents			Mean	Std. Err.	No. Observations	Percents			Mean				
		Correct	Incorrect	Omit/Mult			Observations	Correct	Incorrect	Omit/Mult						
4.x.x - Writing Process	52	76	25	0	0.76	0.02	585,936	73	27	0	0.73	0.03				
4.10.x - Revising	16	79	22	0	0.79	0.04	130,317	66	34	0	0.66	0.13				
4.11.x - Editing	36	75	25	0	0.75	0.02	455,619	75	24	0	0.75	0.00				