



Interim Performance Report

In March 2009, the Kentucky General Assembly passed Senate Bill 1 (SB1) that was subsequently signed into law by the Governor. SB1 calls for a significant overhaul of the state's assessment and accountability system. The new assessment system begins in the spring of 2012. The school years of 2008-2009, 2009-2010 and 2010-2011 are described in SB1 as an interim period. This three-year period allows Kentucky to develop the new assessment system and to carry on state and federal testing requirements.

The Interim Performance Report includes the Kentucky Core Content Test (KCCT) in Reading (grades 3-8 and 10), Mathematics (grades 3-8 and 11), Science (grades 4, 7 and 11), Social Studies (grades 5, 8 and 11) and Writing On-Demand (grades 5, 8 and 12). The KCCT is based on the Kentucky Core Content for Assessment (Version 4.1) and contains multiple choice and open response questions. The Writing On-Demand test uses writing prompts that require students to craft a piece of writing in a 60 minute period.

The KCCT is developed under the direction of content advisory committees of Kentucky educators who draft, review and select test questions. All test items are reviewed by a bias review committee to enhance the fairness of items for all Kentucky students.

The KCCT continues to fulfill the requirements of the federal statute known as the No Child Left Behind Act of 2001. A separate accountability report for No Child Left Behind (NCLB) is published by the Kentucky Department of Education.

The Interim Performance Report focuses entirely on the five state-required content areas and provides data for schools or districts. The data in this report is not used directly for state accountability; although, these results can fulfill the requirements of Senate Bill 168 from 2002 and may be used by schools or districts for their own local accountability needs.

Performance standards are based on descriptions of Novice, Apprentice, Proficient and Distinguished (NAPD) student performance levels specific to the content area and grade being assessed. The performance standards, in conjunction with Kentucky's Core Content for Assessment, should allow instruction to better focus on the content area to be taught and on how well students must demonstrate achievement in each content area.

Reporting Changes for 2009

Based on SB1, Kentucky will not be reporting state accountability and academic indices as in the past. The report does have several familiar pages with performance level (NAPD) trend, core content and disaggregation data per content area. Districts and schools will still see distributions of how students scored in the Novice (with sublevels), Apprentice (with sublevels), Proficient and Distinguished performance levels.

Confidentiality Changes

Due to federal regulations around the Family Education Rights and Privacy Act (FERPA), the numbers of students have been removed. Though there is a need to report as much data as possible, there is also a paramount need to maintain the confidential aspects of individual scores. When scores are reported in what is commonly called "small cells" where very few students may be categorized, there is the possibility of revealing individual scores when numbers are reported. Numbers are reported to each district in a confidential report that accompanies the public Interim Performance Report.

**2008-2009
INTERIM PERFORMANCE REPORT**

School: Nancy Elementary School
District: Pulaski County
Code: 501280
Grade: PRIMARY-05

CONTENTS OF THIS REPORT

Introduction	1
Academic Trend Data	
Reading Results	2-8
Mathematics Results	9-15
Science Results	16-18
Social Studies Results	19-21
Writing Results	22-24

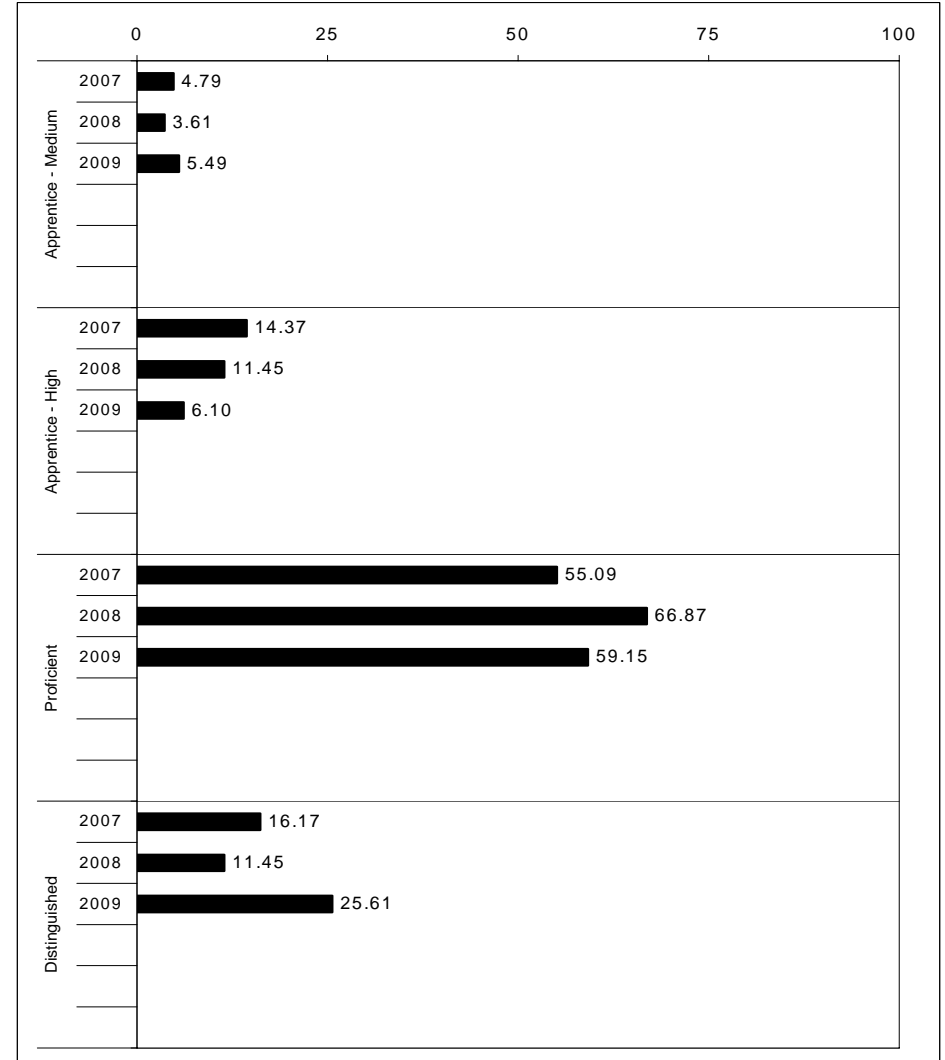
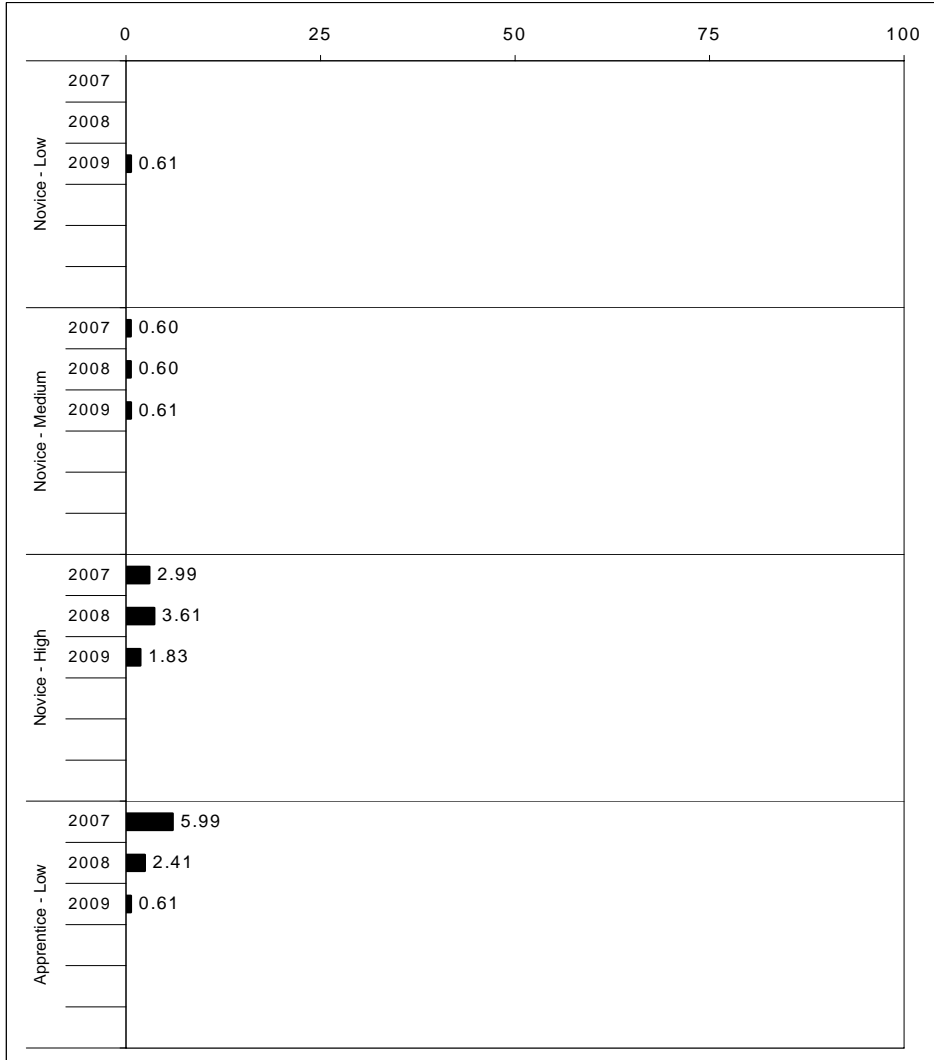
For more information, refer to the 2009 Interim Assessment Interpretative Guide on the Kentucky Department of Education Web site (www.education.ky.gov).





2008-2009
INTERIM PERFORMANCE REPORT
READING TREND DATA
Performance Level Percents

School: Nancy Elementary School
 District: Pulaski County
 Code: 501280
 Grade: ELEMENTARY



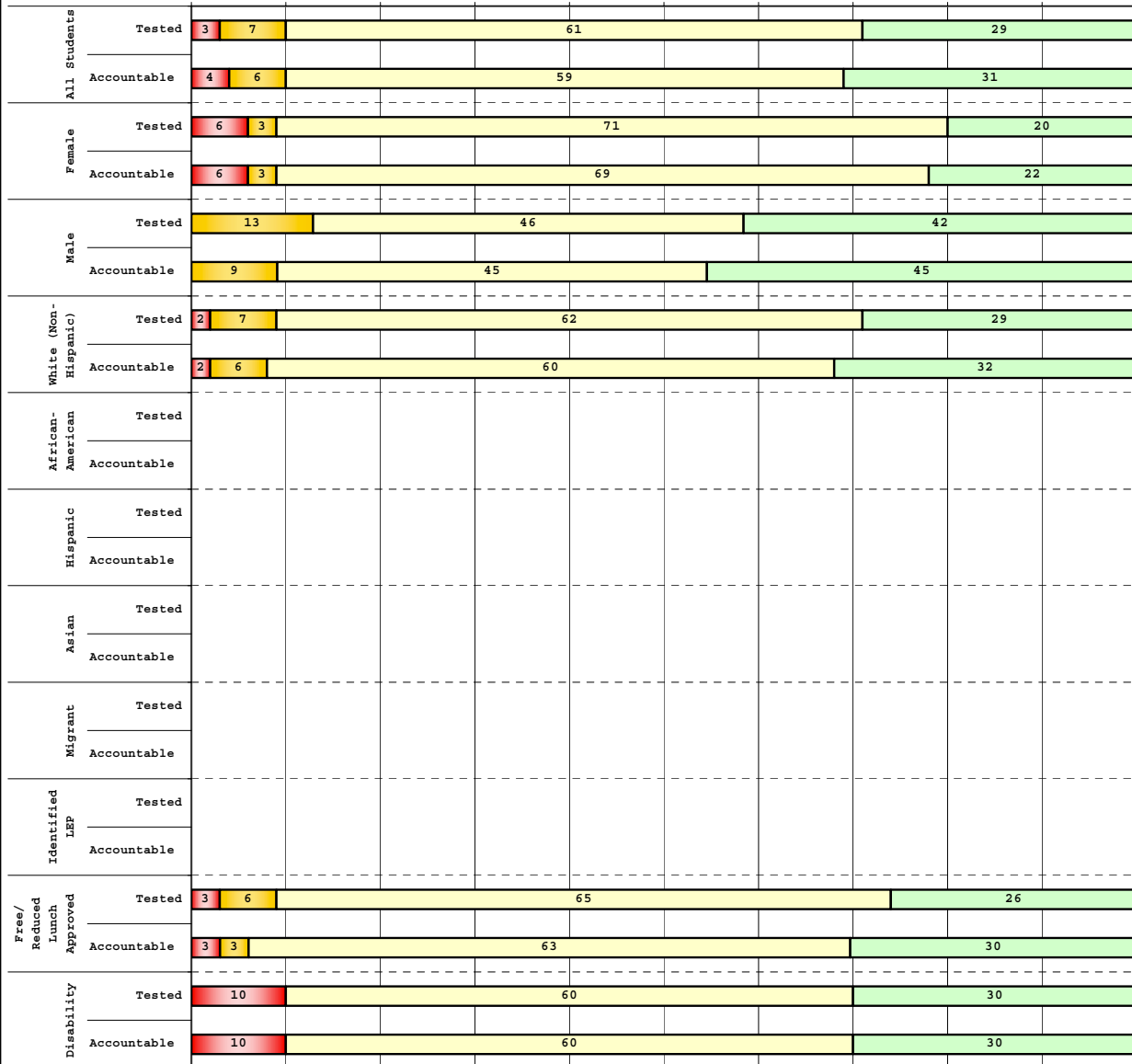
The horizontal bar represents the percent of students scoring at a performance level within a particular year. Percentages may not sum to 100% due to rounding.



**2008-2009
INTERIM PERFORMANCE REPORT
READING DISAGGREGATION
Performance Level Percents**

School: Nancy Elementary School
District: Pulaski County
Code: 501280
Grade: 03

0% 10% 20% 30% 40% 50% 60% 70% 80% 90% 100%



Category	N%	A%	P%	D%	P+D%
Tested Students					
Total	3	7	61	29	89.83
Female	6	3	71	20	91.43
Male	0	13	46	42	87.50
White (Non-Hispanic)	2	7	62	29	91.38
African-American					
Hispanic					
Asian					
Other					
Title I	3	7	61	29	89.83
Migrant					
Identified LEP					
Extended Sch Services					
Gifted/Talented	0	0	23	77	100.00
F/R Lunch Approved	3	6	65	26	91.18
Vocational/2 Credits					
Disability	10	0	60	30	90.00
Alternate Assessment	Unreportable*				
NCLB Accountable Students					
Total	4	6	59	31	90.74
Female	6	3	69	22	90.63
Male	0	9	45	45	90.91
White (Non-Hispanic)	2	6	60	32	92.45
African-American					
Hispanic					
Asian					
Other					
Title I	4	6	59	31	90.74
Migrant					
Identified LEP					
Extended Sch Services					
Gifted/Talented	0	0	23	77	100.00
F/R Lunch Approved	3	3	63	30	93.33
Vocational/2 Credits					
Disability	10	0	60	30	90.00
Alternate Assessment	Unreportable*				

■ Novice
■ Apprentice
■ Proficient
■ Distinguished

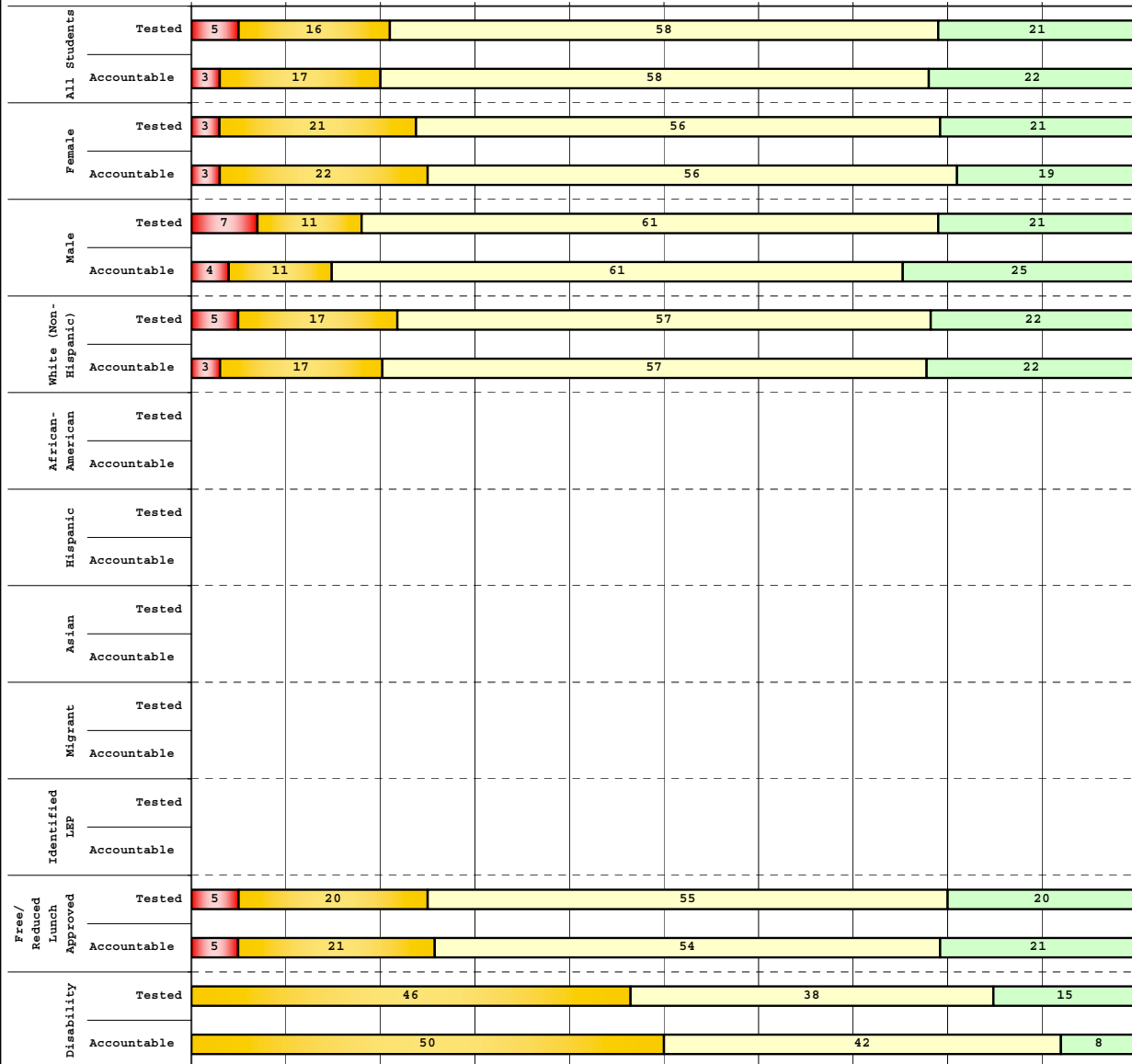
Percentage may not sum to 100% due to rounding. 'Unreportable*' indicates subpopulations with fewer than 10 students or subpopulations where all students score at the same performance level.



**2008-2009
INTERIM PERFORMANCE REPORT
READING DISAGGREGATION
Performance Level Percents**

School: Nancy Elementary School
District: Pulaski County
Code: 501280
Grade: 04

0% 10% 20% 30% 40% 50% 60% 70% 80% 90% 100%



Tested Students

	N%	A%	P%	D%	P+D%
Total	5	16	58	21	79.03
Female	3	21	56	21	76.47
Male	7	11	61	21	82.14
White (Non-Hispanic)	5	17	57	22	78.33
African-American					
Hispanic	Unreportable*				
Asian					
Other					
Title I	5	16	58	21	79.03
Migrant					
Identified LEP					
Extended Sch Services	7	33	47	13	60.00
Gifted/Talented	0	0	63	37	100.00
F/R Lunch Approved	5	20	55	20	75.00
Vocational/2 Credits					
Disability	0	46	38	15	53.85
Alternate Assessment					

NCLB Accountable Students

	N%	A%	P%	D%	P+D%
Total	3	17	58	22	80.00
Female	3	22	56	19	75.00
Male	4	11	61	25	85.71
White (Non-Hispanic)	3	17	57	22	79.31
African-American					
Hispanic	Unreportable*				
Asian					
Other					
Title I	3	17	58	22	80.00
Migrant					
Identified LEP					
Extended Sch Services	7	33	47	13	60.00
Gifted/Talented	0	0	63	37	100.00
F/R Lunch Approved	5	21	54	21	74.36
Vocational/2 Credits					
Disability	0	50	42	8	50.00
Alternate Assessment					

■ Novice
■ Apprentice
■ Proficient
■ Distinguished

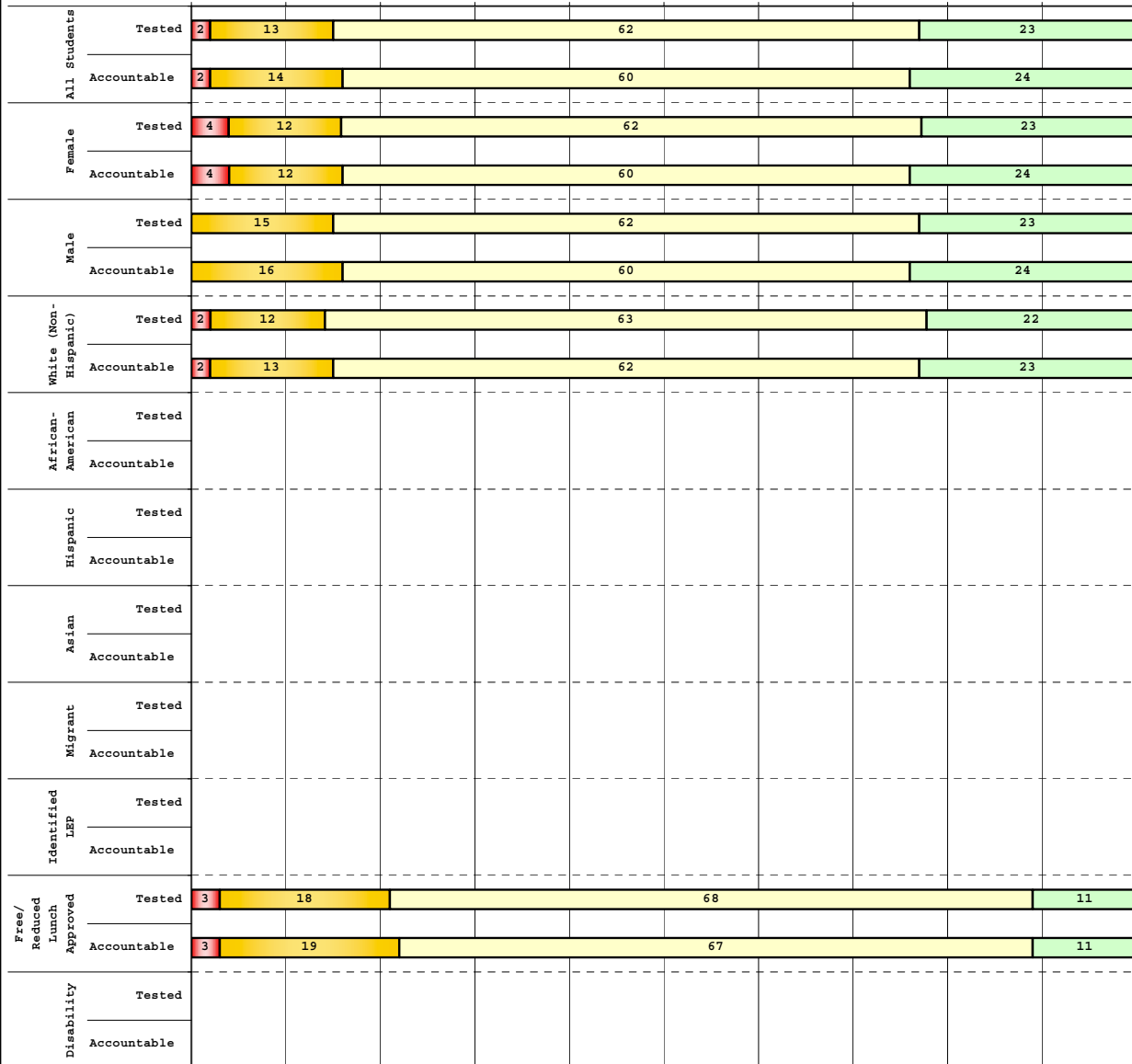
Percentage may not sum to 100% due to rounding. 'Unreportable*' indicates subpopulations with fewer than 10 students or subpopulations where all students score at the same performance level.



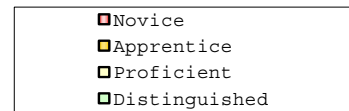
2008-2009
INTERIM PERFORMANCE REPORT
READING DISAGGREGATION
Performance Level Percents

School: Nancy Elementary School
 District: Pulaski County
 Code: 501280
 Grade: 05

0% 10% 20% 30% 40% 50% 60% 70% 80% 90% 100%



Category	N%	A%	P%	D%	P+D%
Tested Students					
Total	2	13	62	23	84.62
Female	4	12	62	23	84.62
Male	0	15	62	23	84.62
White (Non-Hispanic)	2	12	63	22	85.71
African-American	Unreportable*				
Hispanic	Unreportable*				
Asian	Unreportable*				
Other	Unreportable*				
Title I	2	13	62	23	84.62
Migrant	Unreportable*				
Identified LEP	Unreportable*				
Extended Sch Services	0	27	67	7	73.33
Gifted/Talented	0	8	42	50	91.67
F/R Lunch Approved	3	18	68	11	78.95
Vocational/2 Credits	Unreportable*				
Disability	Unreportable*				
Alternate Assessment	Unreportable*				
NCLB Accountable Students					
Total	2	14	60	24	84.00
Female	4	12	60	24	84.00
Male	0	16	60	24	84.00
White (Non-Hispanic)	2	13	62	23	85.11
African-American	Unreportable*				
Hispanic	Unreportable*				
Asian	Unreportable*				
Other	Unreportable*				
Title I	2	14	60	24	84.00
Migrant	Unreportable*				
Identified LEP	Unreportable*				
Extended Sch Services	0	27	67	7	73.33
Gifted/Talented	0	9	36	55	90.91
F/R Lunch Approved	3	19	67	11	77.78
Vocational/2 Credits	Unreportable*				
Disability	Unreportable*				
Alternate Assessment	Unreportable*				



Percentage may not sum to 100% due to rounding. 'Unreportable*' indicates subpopulations with fewer than 10 students or subpopulations where all students score at the same performance level.



2008-2009
INTERIM PERFORMANCE REPORT
READING CORE CONTENT

School: Nancy Elementary School
 District: Pulaski County
 Code: 501280
 Grade: 03

	No. Items	No. Observations	SCHOOL							Mean	Std. Err.	No. Observations	STATE							Mean	School -State Mean
			B	0	1	2	3	4	B				0	1	2	3	4				
OPEN RESPONSE																					
2.0.x - Developing Understanding	2	106	0	8	18	44	28	1	2.0	0.1	100,212	0	10	30	44	14	2	1.7	0.3		
3.0.x - Interpreting Text	2	106	0	8	18	44	28	1	2.0	0.1	100,212	0	10	30	44	14	2	1.7	0.3		
MULTIPLE CHOICE																					
1.0.x - Forming a Foundation	32	412	85	15	0				0.85	0.02	392,589	83	17	0				0.83	0.02		
2.0.x - Developing Understanding	89	1,057	87	13	0				0.87	0.01	993,477	80	20	0				0.80	0.07		
3.0.x - Interpreting Text	31	499	85	15	0				0.85	0.02	468,115	77	23	0				0.77	0.08		
5.0.x - Critical Stance	15	210	85	15	0				0.85	0.03	208,359	79	21	0				0.79	0.06		



**2008-2009
INTERIM PERFORMANCE REPORT
READING CORE CONTENT**

School: Nancy Elementary School
 District: Pulaski County
 Code: 501280
 Grade: 04

	No. Items	No. Observations	SCHOOL							Mean	Std. Err.	No. Observations	STATE							Mean	School -State Mean
			B	0	1	2	3	4	B				0	1	2	3	4				
OPEN RESPONSE																					
2.0.x - Developing Understanding	5	96	0	1	20	51	23	5	2.1	0.1	81,849	0	3	24	52	18	3	1.9	0.2		
3.0.x - Interpreting Text	6	162	0	2	23	44	26	6	2.1	0.1	131,199	0	4	22	45	23	5	2.0	0.1		
MULTIPLE CHOICE																					
1.0.x - Forming a Foundation	34	497	77	23	0				0.77	0.02	401,452	72	28	0				0.71	0.06		
2.0.x - Developing Understanding	76	1,050	78	22	0				0.78	0.01	868,422	73	27	0				0.73	0.05		
3.0.x - Interpreting Text	29	336	84	16	0				0.84	0.02	278,648	79	21	0				0.79	0.05		
5.0.x - Critical Stance	9	186	83	17	0				0.83	0.03	155,704	74	26	0				0.74	0.09		



2008-2009
INTERIM PERFORMANCE REPORT
READING CORE CONTENT

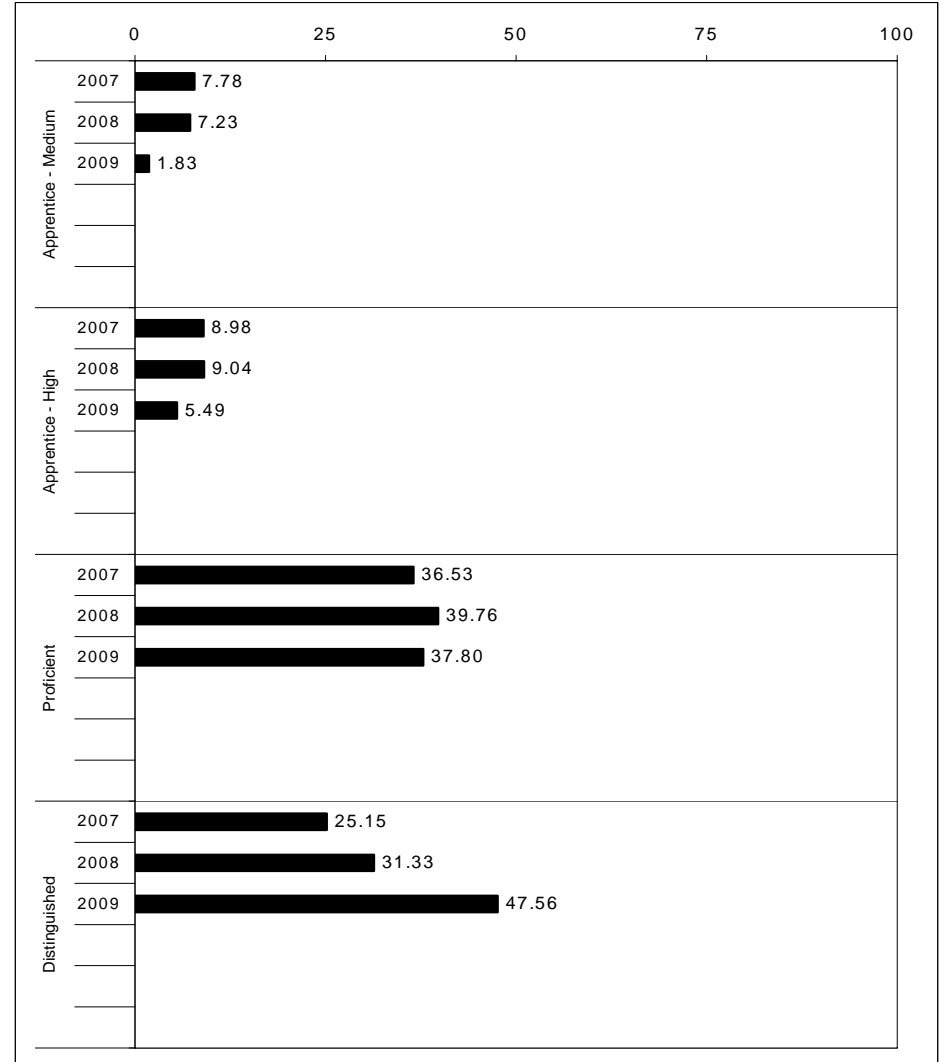
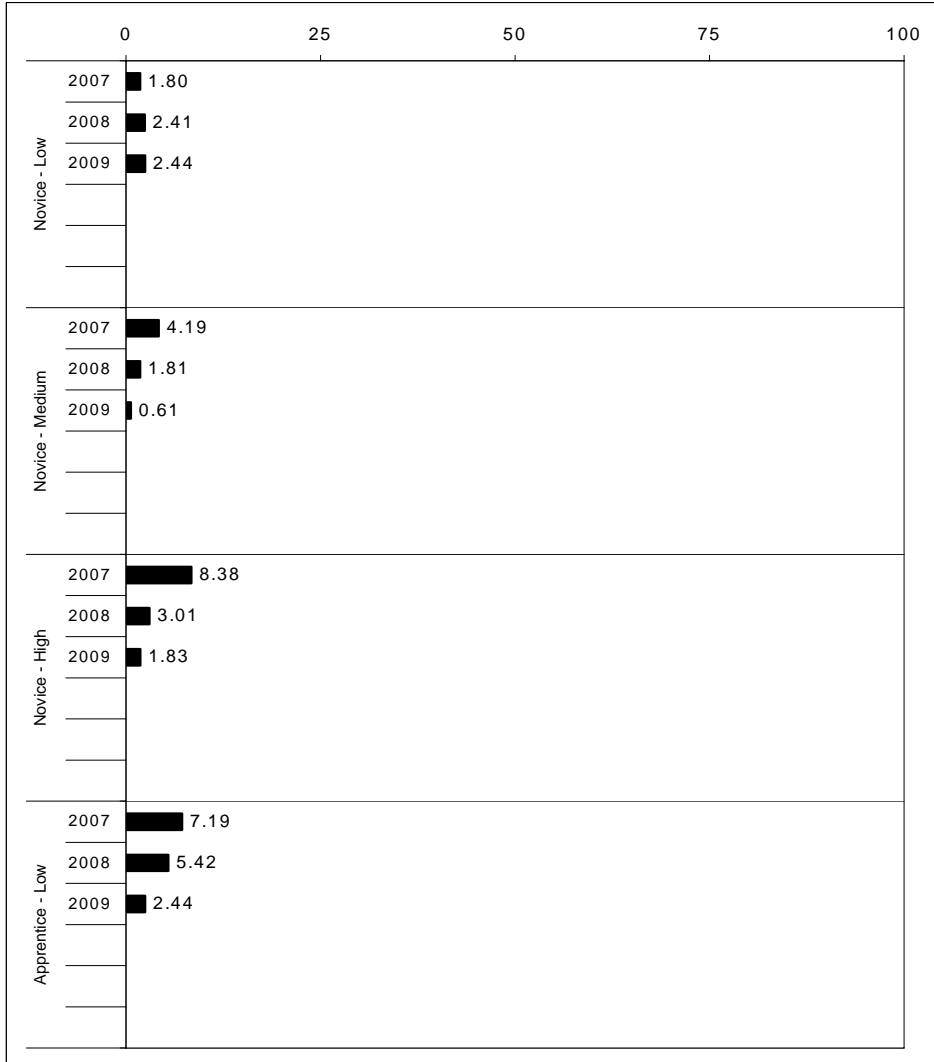
School: Nancy Elementary School
 District: Pulaski County
 Code: 501280
 Grade: 05

	No. Items	No. Observations	SCHOOL							Mean	Std. Err.	No. Observations	STATE							Mean	School -State Mean
			B	0	1	2	3	4	B				0	1	2	3	4				
OPEN RESPONSE																					
2.0.x - Developing Understanding	6	92	0	1	16	50	24	9	2.2	0.1	89,507	0	5	23	48	20	5	2.0	0.2		
3.0.x - Interpreting Text	6	134	0	1	16	52	22	8	2.2	0.1	130,403	0	5	21	50	19	4	2.0	0.2		
MULTIPLE CHOICE																					
			Correct	Incorrect	Omit/Mult							Correct	Incorrect	Omit/Mult							
1.0.x - Forming a Foundation	28	271	78	21	0			0.78	0.03	268,187	74	26	0				0.74	0.04			
2.0.x - Developing Understanding	71	852	84	16	0			0.84	0.01	823,068	80	20	0				0.80	0.04			
3.0.x - Interpreting Text	27	350	85	15	0			0.85	0.02	341,653	81	19	0				0.81	0.04			
5.0.x - Critical Stance	17	304	83	17	0			0.83	0.02	300,671	75	25	0				0.75	0.08			



2008-2009
INTERIM PERFORMANCE REPORT
MATHEMATICS TREND DATA
Performance Level Percents

School: Nancy Elementary School
 District: Pulaski County
 Code: 501280
 Grade: ELEMENTARY



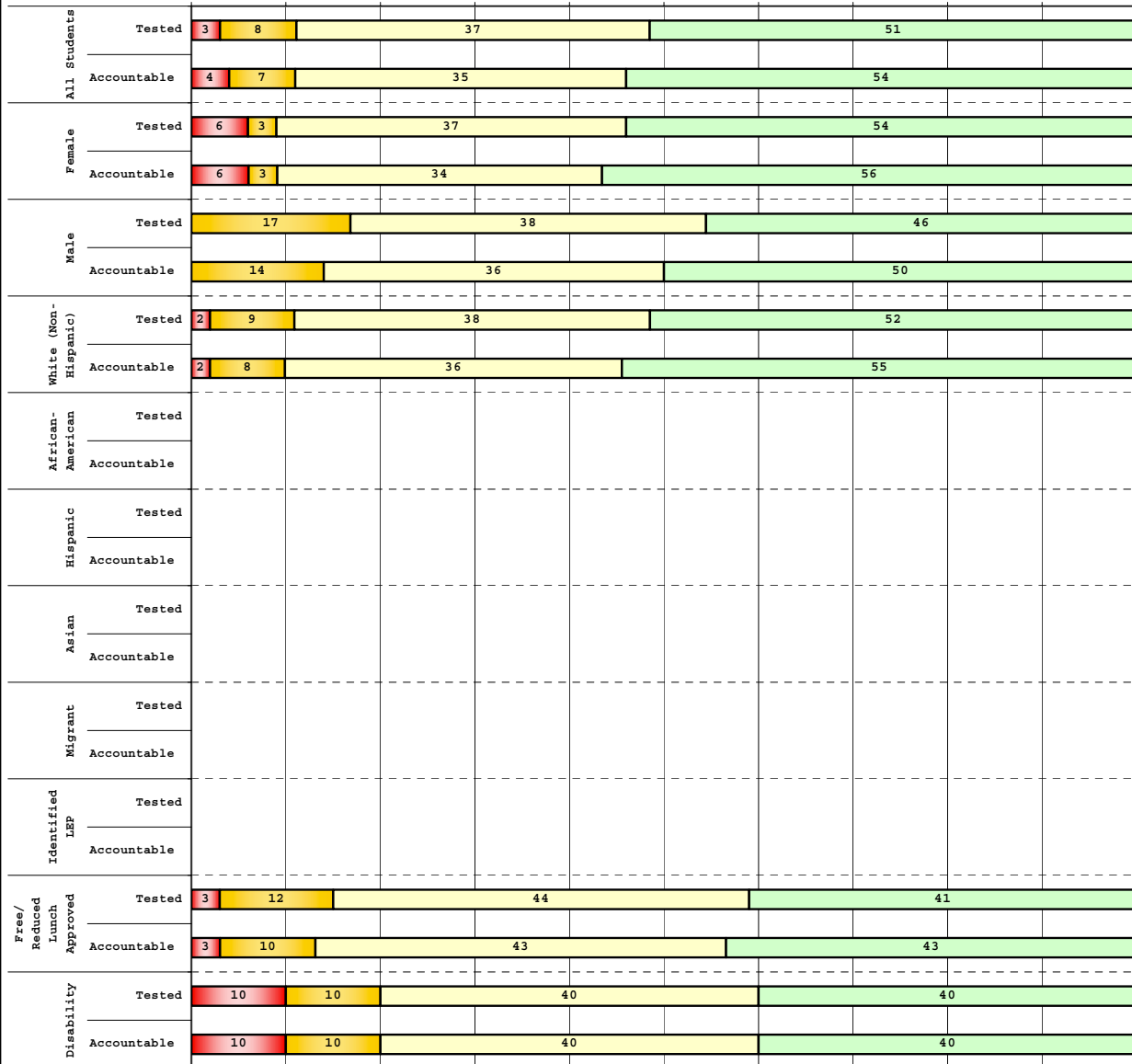
The horizontal bar represents the percent of students scoring at a performance level within a particular year. Percentages may not sum to 100% due to rounding.



2008-2009
INTERIM PERFORMANCE REPORT
MATHEMATICS DISAGGREGATION
Performance Level Percents

School: Nancy Elementary School
 District: Pulaski County
 Code: 501280
 Grade: 03

0% 10% 20% 30% 40% 50% 60% 70% 80% 90% 100%



Tested Students		N%	A%	P%	D%	P+D%
Total		3	8	37	51	88.14
Female		6	3	37	54	91.43
Male		0	17	38	46	83.33
White (Non-Hispanic)		2	9	38	52	89.66
African-American						
Hispanic						
Asian						
Other						
Title I		3	8	37	51	88.14
Migrant						
Identified LEP						
Extended Sch Services						
Gifted/Talented		0	0	8	92	100.00
F/R Lunch Approved		3	12	44	41	85.29
Vocational/2 Credits						
Disability		10	10	40	40	80.00
Alternate Assessment	Unreportable*					
NCLB Accountable Students						
Total		4	7	35	54	88.89
Female		6	3	34	56	90.63
Male		0	14	36	50	86.36
White (Non-Hispanic)		2	8	36	55	90.57
African-American						
Hispanic						
Asian						
Other						
Title I		4	7	35	54	88.89
Migrant						
Identified LEP						
Extended Sch Services						
Gifted/Talented		0	0	8	92	100.00
F/R Lunch Approved		3	10	43	43	86.67
Vocational/2 Credits						
Disability		10	10	40	40	80.00
Alternate Assessment	Unreportable*					

■ Novice
■ Apprentice
■ Proficient
■ Distinguished

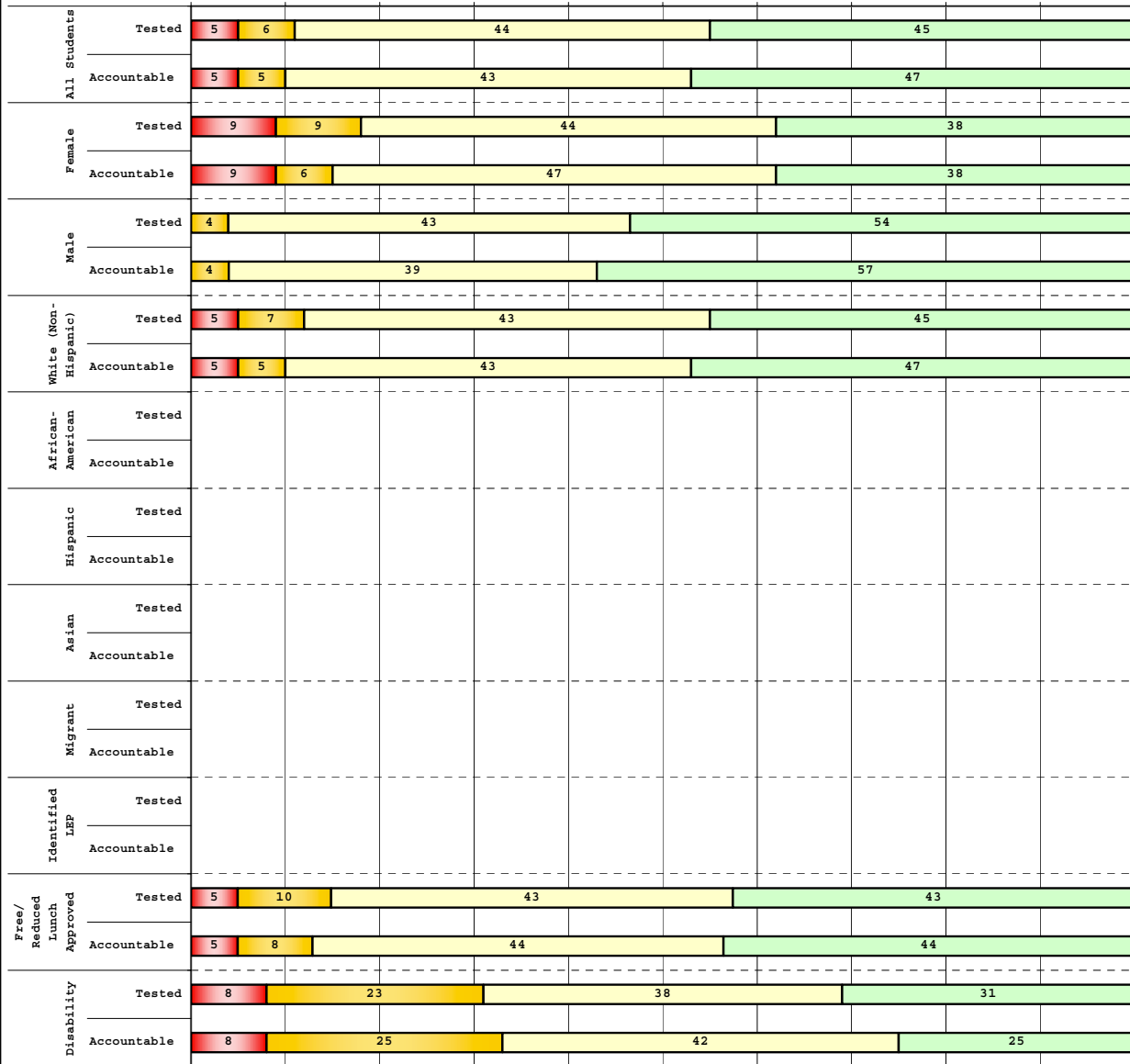
Percentage may not sum to 100% due to rounding. 'Unreportable*' indicates subpopulations with fewer than 10 students or subpopulations where all students score at the same performance level.



2008-2009
INTERIM PERFORMANCE REPORT
MATHEMATICS DISAGGREGATION
Performance Level Percents

School: Nancy Elementary School
 District: Pulaski County
 Code: 501280
 Grade: 04

0% 10% 20% 30% 40% 50% 60% 70% 80% 90% 100%



Tested Students

	N%	A%	P%	D%	P+D%
Total	5	6	44	45	88.71
Female	9	9	44	38	82.35
Male	0	4	43	54	96.43
White (Non-Hispanic)	5	7	43	45	88.33
African-American					
Hispanic	Unreportable*				
Asian					
Other					
Title I	5	6	44	45	88.71
Migrant					
Identified LEP					
Extended Sch Services	7	13	73	7	80.00
Gifted/Talented	0	0	11	89	100.00
F/R Lunch Approved	5	10	43	43	85.00
Vocational/2 Credits					
Disability	8	23	38	31	69.23
Alternate Assessment					

NCLB Accountable Students

	N%	A%	P%	D%	P+D%
Total	5	5	43	47	90.00
Female	9	6	47	38	84.38
Male	0	4	39	57	96.43
White (Non-Hispanic)	5	5	43	47	89.66
African-American					
Hispanic	Unreportable*				
Asian					
Other					
Title I	5	5	43	47	90.00
Migrant					
Identified LEP					
Extended Sch Services	7	13	73	7	80.00
Gifted/Talented	0	0	11	89	100.00
F/R Lunch Approved	5	8	44	44	87.18
Vocational/2 Credits					
Disability	8	25	42	25	66.67
Alternate Assessment					

■ Novice
■ Apprentice
■ Proficient
■ Distinguished

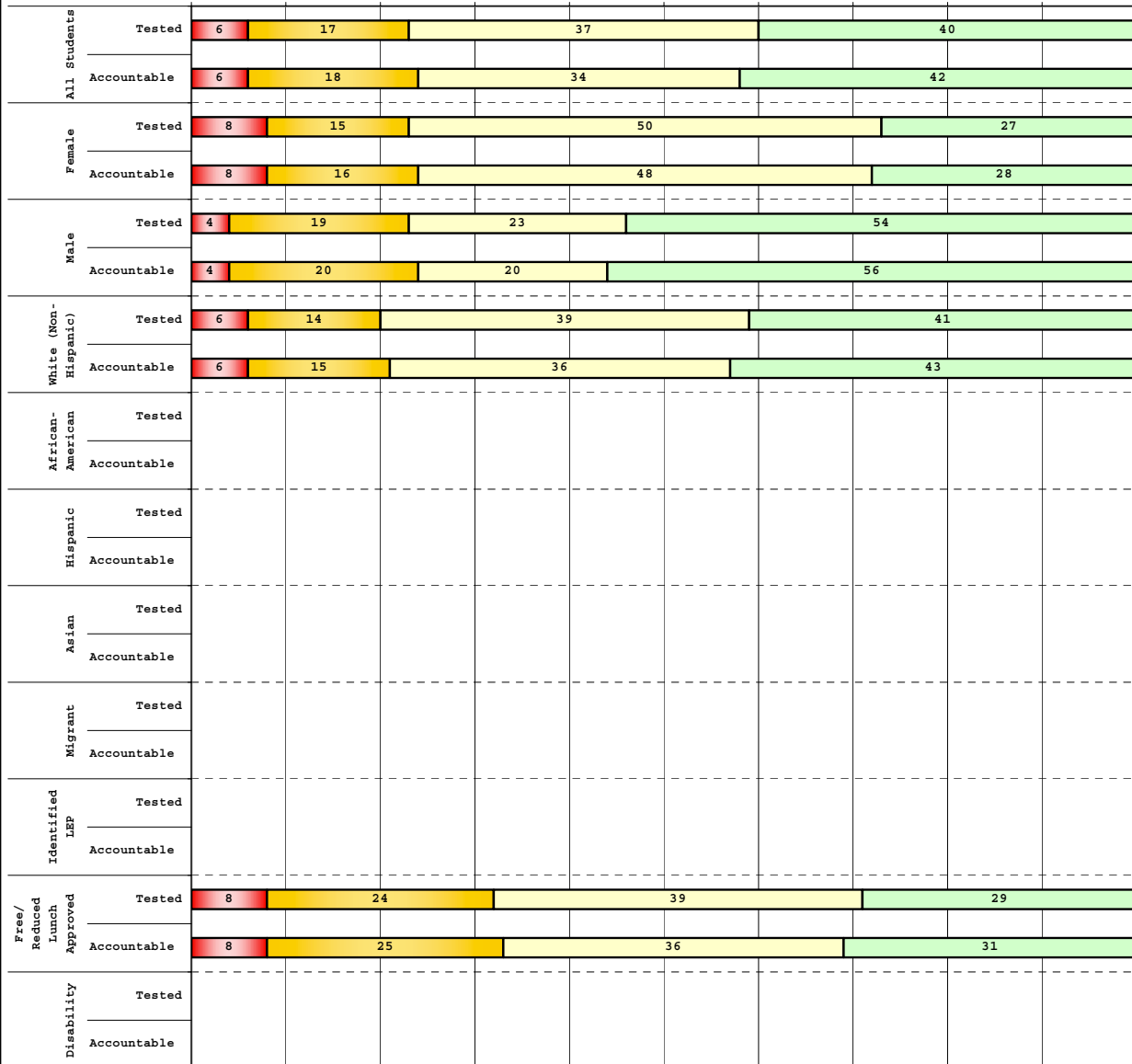
Percentage may not sum to 100% due to rounding. 'Unreportable*' indicates subpopulations with fewer than 10 students or subpopulations where all students score at the same performance level.



2008-2009
INTERIM PERFORMANCE REPORT
MATHEMATICS DISAGGREGATION
Performance Level Percents

School: Nancy Elementary School
 District: Pulaski County
 Code: 501280
 Grade: 05

0% 10% 20% 30% 40% 50% 60% 70% 80% 90% 100%



Category	N%	A%	P%	D%	P+D%
Tested Students					
Total	6	17	37	40	76.92
Female	8	15	50	27	76.92
Male	4	19	23	54	76.92
White (Non-Hispanic)	6	14	39	41	79.59
African-American					
Hispanic	Unreportable*				
Asian					
Other					
Title I	6	17	37	40	76.92
Migrant					
Identified LEP					
Extended Sch Services	7	40	40	13	53.33
Gifted/Talented	0	0	17	83	100.00
F/R Lunch Approved	8	24	39	29	68.42
Vocational/2 Credits					
Disability	Unreportable*				
Alternate Assessment					
NCLB Accountable Students					
Total	6	18	34	42	76.00
Female	8	16	48	28	76.00
Male	4	20	20	56	76.00
White (Non-Hispanic)	6	15	36	43	78.72
African-American					
Hispanic	Unreportable*				
Asian					
Other					
Title I	6	18	34	42	76.00
Migrant					
Identified LEP					
Extended Sch Services	7	40	40	13	53.33
Gifted/Talented	0	0	9	91	100.00
F/R Lunch Approved	8	25	36	31	66.67
Vocational/2 Credits					
Disability	Unreportable*				
Alternate Assessment					

■ Novice
■ Apprentice
■ Proficient
■ Distinguished

Percentage may not sum to 100% due to rounding. 'Unreportable*' indicates subpopulations with fewer than 10 students or subpopulations where all students score at the same performance level.



2008-2009
INTERIM PERFORMANCE REPORT
MATHEMATICS CORE CONTENT

School: Nancy Elementary School
 District: Pulaski County
 Code: 501280
 Grade: 03

	No. Items	No. Observations	SCHOOL							Mean	Std. Err.	No. Observations	STATE							Mean	School -State Mean
			B	0	1	2	3	4	Percents				B	0	1	2	3	4	Percents		
OPEN RESPONSE																					
1.x.x - Number Prop Oper	5	133	0	17	32	29	10	13	1.7	0.1	125,243	0	21	35	26	10	8	1.5	0.2		
2.x.x - Measurement	1	9							***		8,325	0	25	5	30	14	25	2.1			
3.x.x - Geometry	2	16	0	6	13	44	6	31	2.4	0.3	16,777	0	8	24	35	13	20	2.1	0.3		
4.x.x - Data Analysis & Probabilit	1	53	0	8	0	15	13	64	3.3	0.2	50,106	0	9	13	19	27	32	2.6	0.7		
5.x.x - Algebraic Thinking	2	63	0	8	2	14	16	60	3.2	0.2	58,404	0	9	14	19	28	31	2.6	0.6		
MULTIPLE CHOICE																					
1.x.x - Number Prop Oper	32	854	83	17	0				0.83	0.02	810,106	74	26	0				0.74	0.09		
2.x.x - Measurement	7	196	87	13	0				0.87	0.03	183,647	81	18	0				0.81	0.06		
3.x.x - Geometry	18	424	93	7	0				0.93	0.02	400,848	85	15	0				0.85	0.08		
4.x.x - Data Analysis & Probabilit	8	202	79	21	0				0.79	0.03	192,126	69	31	0				0.69	0.10		
5.x.x - Algebraic Thinking	11	232	84	16	0				0.84	0.03	217,089	78	22	0				0.78	0.06		



2008-2009
INTERIM PERFORMANCE REPORT
MATHEMATICS CORE CONTENT

School: Nancy Elementary School
 District: Pulaski County
 Code: 501280
 Grade: 04

	No. Items	No. Observations	SCHOOL								Std. Err.	No. Observations	STATE								School -State Mean
			B	0	1	2	3	4	Mean	B			0	1	2	3	4	Mean			
OPEN RESPONSE																					
1.x.x - Number Prop Oper	4	88	0	11	48	20	10	10	1.6	0.1	73,656	0	17	24	29	19	12	1.9	-0.3		
2.x.x - Measurement	1	8							***		8,195	0	43	13	10	20	13	1.5			
3.x.x - Geometry	2	70	0	1	10	11	21	56	3.2	0.2	57,352	0	11	20	17	19	33	2.4	0.8		
4.x.x - Data Analysis & Probabilit	1	9							***		8,152	0	5	36	29	23	6	1.9			
5.x.x - Algebraic Thinking	2	73	0	1	29	26	32	12	2.2	0.1	57,508	0	5	27	32	25	11	2.1	0.1		
MULTIPLE CHOICE																					
1.x.x - Number Prop Oper	31	819	75	24	0				0.75	0.02	664,194	67	33	0				0.67	0.08		
2.x.x - Measurement	7	165	81	19	1				0.81	0.04	139,170	62	38	0				0.62	0.19		
3.x.x - Geometry	14	341	88	11	1				0.88	0.02	278,460	77	23	0				0.77	0.11		
4.x.x - Data Analysis & Probabilit	12	370	82	18	0				0.82	0.02	303,394	71	29	0				0.71	0.11		
5.x.x - Algebraic Thinking	11	306	84	16	0				0.84	0.03	253,829	69	31	0				0.69	0.15		



**2008-2009
INTERIM PERFORMANCE REPORT
MATHEMATICS CORE CONTENT**

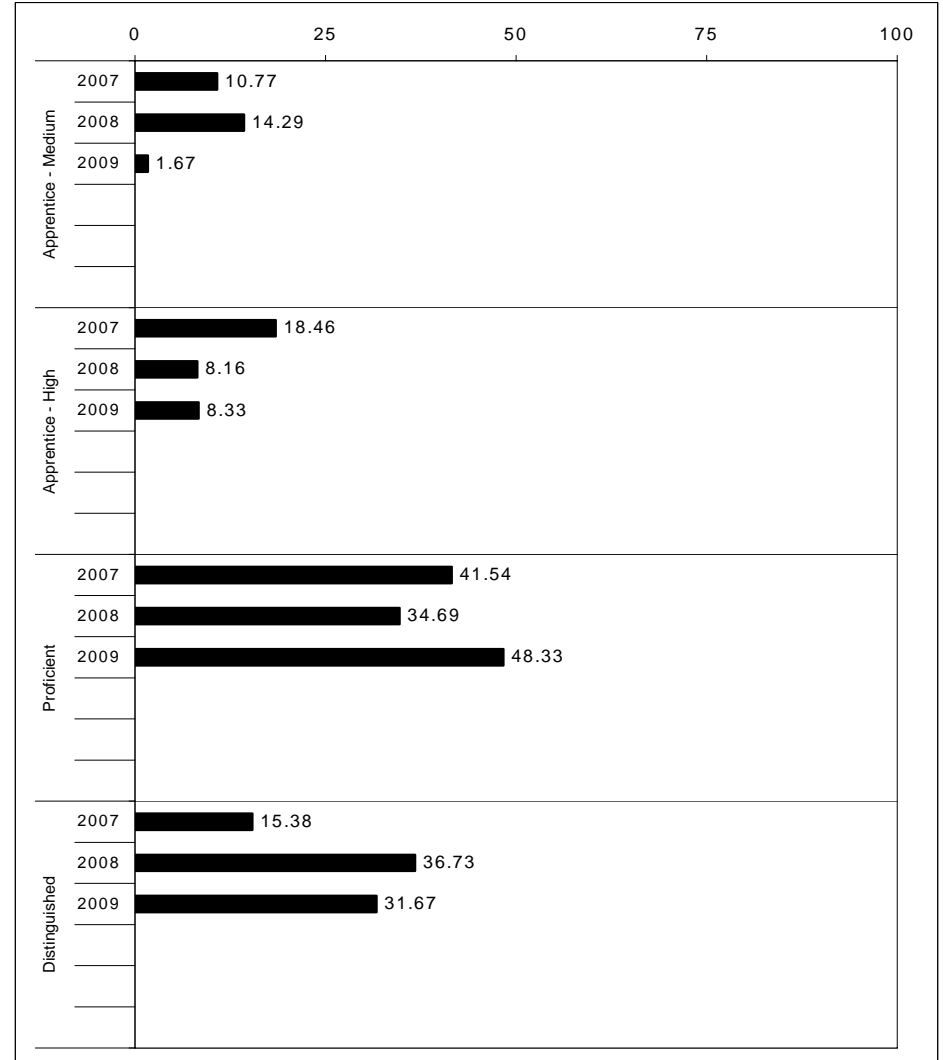
School: Nancy Elementary School
 District: Pulaski County
 Code: 501280
 Grade: 05

	No. Items	No. Observations	SCHOOL							Mean	Std. Err.	No. Observations	STATE							Mean	School -State Mean
			B	0	1	2	3	4	B				0	1	2	3	4				
OPEN RESPONSE																					
1.x.x - Number Prop Oper	4	73	0	7	16	18	18	41	2.7	0.2	73,199	0	8	20	18	25	29	2.5	0.2		
2.x.x - Measurement	1	11	0	36	27	9	18	9	1.4	0.4	8,380	0	37	30	13	10	11	1.3	0.1		
3.x.x - Geometry	2	58	0	2	31	28	26	14	2.2	0.1	56,900	0	6	24	30	26	14	2.2	0.0		
4.x.x - Data Analysis & Probabilit	1	50	0	10	8	20	22	40	2.7	0.2	48,828	0	15	18	15	17	35	2.4	0.3		
5.x.x - Algebraic Thinking	1	8							***		8,005	0	13	15	20	17	35	2.5			
MULTIPLE CHOICE																					
1.x.x - Number Prop Oper	29	661	71	29	0				0.71	0.02	643,144	63	37	0				0.63	0.08		
2.x.x - Measurement	9	158	67	33	0				0.67	0.04	154,489	62	38	0				0.62	0.05		
3.x.x - Geometry	14	281	87	13	0				0.87	0.02	276,516	78	22	0				0.78	0.09		
4.x.x - Data Analysis & Probabilit	11	258	71	30	0				0.71	0.03	252,212	64	36	0				0.64	0.07		
5.x.x - Algebraic Thinking	10	250	74	26	0				0.74	0.03	244,140	65	35	0				0.65	0.09		



2008-2009
INTERIM PERFORMANCE REPORT
SCIENCE TREND DATA
Performance Level Percents

School: Nancy Elementary School
 District: Pulaski County
 Code: 501280
 Grade: 04



The horizontal bar represents the percent of students scoring at a performance level within a particular year. Percentages may not sum to 100% due to rounding.



**2008-2009
INTERIM PERFORMANCE REPORT
SCIENCE DISAGGREGATION
Performance Level Percents**

School: Nancy Elementary School
District: Pulaski County
Code: 501280
Grade: 04

		0%	10%	20%	30%	40%	50%	60%	70%	80%	90%	100%	N%	A%	P%	D%	P+D%
All Students	Tested	5	18	47	31												
	100 Days	5	15	48	32												
Female	Tested	9	24	35	32												
	100 Days	9	22	38	31												
Male	Tested	11	61	29													
	100 Days	7	61	32													
White (Non-Hispanic)	Tested	5	18	47	30												
	100 Days	5	16	48	31												
African-American	Tested																
	100 Days																
Hispanic	Tested																
	100 Days																
Asian	Tested																
	100 Days																
Migrant	Tested																
	100 Days																
Identified LEP	Tested																
	100 Days																
Free/Reduced Lunch Approved	Tested	5	18	48	30												
	100 Days	5	15	49	31												
Disability	Tested	15	23	31	31												
	100 Days	17	25	33	25												

		N%	A%	P%	D%	P+D%
Tested Students						
Total		5	18	47	31	77.42
Female		9	24	35	32	67.65
Male		0	11	61	29	89.29
White (Non-Hispanic)		5	18	47	30	76.67
African-American		Unreportable*				
Hispanic		Unreportable*				
Asian		Unreportable*				
Other		Unreportable*				
Title I		5	18	47	31	77.42
Migrant		Unreportable*				
Identified LEP						
Extended Sch Services		0	33	60	7	66.67
Gifted/Talented		0	5	21	74	94.74
F/R Lunch Approved		5	18	48	30	77.50
Vocational/2 Credits		Unreportable*				
Disability		15	23	31	31	61.54
Alternate Assessment		Unreportable*				
100 Day Students						
Total		5	15	48	32	80.00
Female		9	22	38	31	68.75
Male		0	7	61	32	92.86
White (Non-Hispanic)		5	16	48	31	79.31
African-American		Unreportable*				
Hispanic		Unreportable*				
Asian		Unreportable*				
Other		Unreportable*				
Title I		5	15	48	32	80.00
Migrant		Unreportable*				
Identified LEP						
Extended Sch Services		0	33	60	7	66.67
Gifted/Talented		0	5	21	74	94.74
F/R Lunch Approved		5	15	49	31	79.49
Vocational/2 Credits		Unreportable*				
Disability		17	25	33	25	58.33
Alternate Assessment		Unreportable*				

■ Novice
■ Apprentice
■ Proficient
■ Distinguished

Percentage may not sum to 100% due to rounding. 'Unreportable*' indicates subpopulations with fewer than 10 students or subpopulations where all students score at the same performance level.



2008-2009
INTERIM PERFORMANCE REPORT
SCIENCE CORE CONTENT

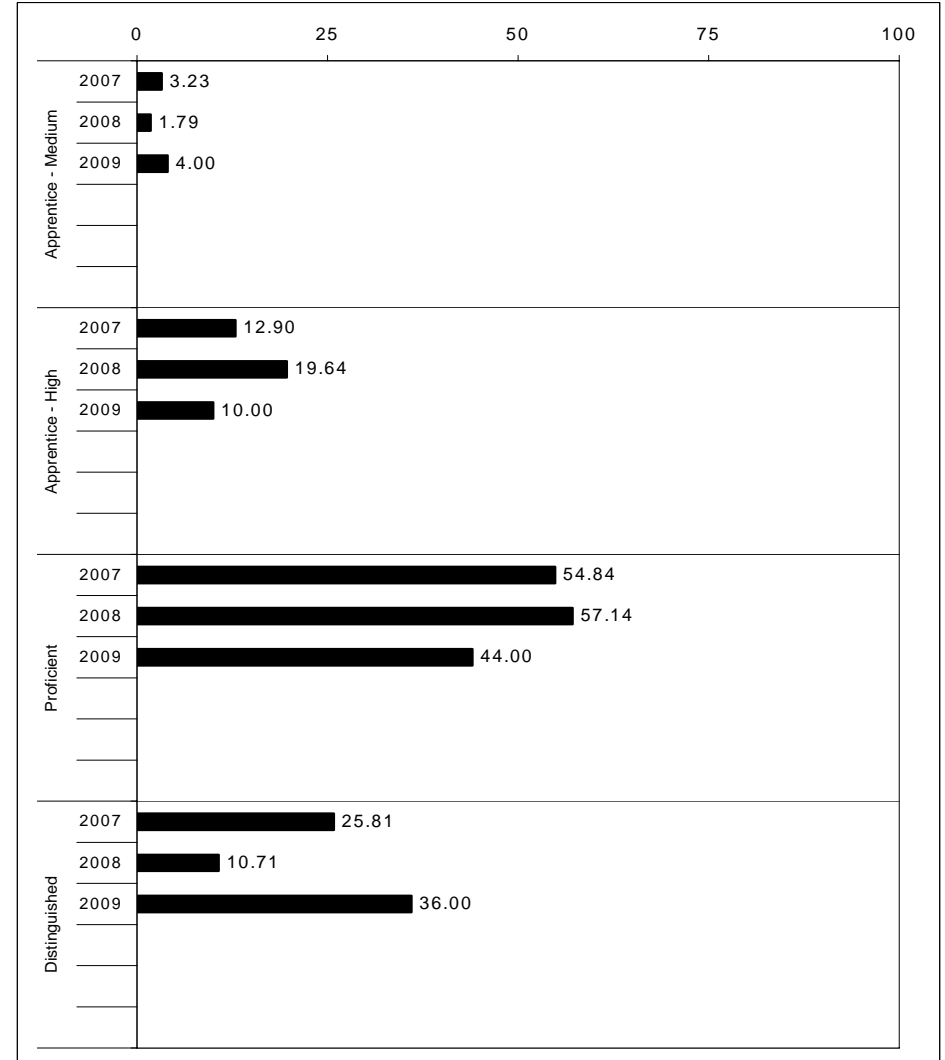
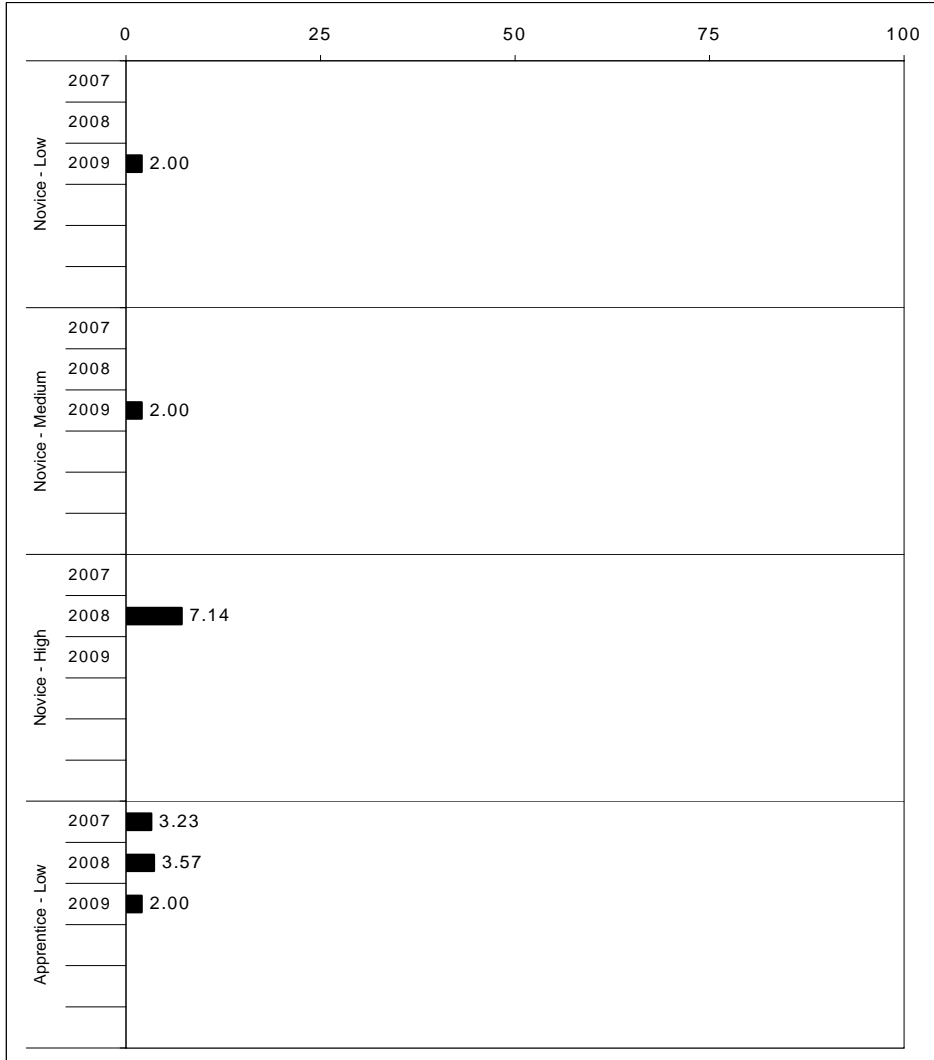
School: Nancy Elementary School
 District: Pulaski County
 Code: 501280
 Grade: 04

	No. Items	No. Observations	SCHOOL								STATE								School -State Mean
			Percents						Mean	Std. Err.	Percents						Mean		
			B	0	1	2	3	4					No. Observations	B	0	1		2	3
OPEN RESPONSE																			
1.x.x - Physical Science	2	19	0	11	21	37	26	5	1.9	0.2	16,337	0	17	19	42	17	5	1.7	0.2
2.x.x - Earth Space Science	3	82	0	10	26	41	23	0	1.8	0.1	65,658	0	12	22	35	26	4	1.9	-0.1
3.x.x - Biological Science	3	79	0	0	4	28	48	20	2.8	0.1	65,506	0	2	11	33	44	9	2.5	0.3
4.x.x - Unifying Concepts	2	73	0	1	15	36	40	8	2.4	0.1	57,508	0	3	13	33	35	15	2.5	-0.1
MULTIPLE CHOICE																			
			Correct	Incorrect	Omit/Mult							Correct	Incorrect	Omit/Mult					
1.x.x - Physical Science	18	480	83	16	1				0.83	0.02	393,336	82	18	0				0.81	0.02
2.x.x - Earth Space Science	19	489	70	30	0				0.70	0.02	401,488	71	29	0				0.71	-0.01
3.x.x - Biological Science	22	573	80	20	1				0.80	0.02	467,138	78	22	0				0.78	0.02
4.x.x - Unifying Concepts	14	387	85	15	1				0.85	0.02	319,534	84	15	0				0.84	0.01



2008-2009
INTERIM PERFORMANCE REPORT
SOCIAL STUDIES TREND DATA
Performance Level Percents

School: Nancy Elementary School
 District: Pulaski County
 Code: 501280
 Grade: 05



The horizontal bar represents the percent of students scoring at a performance level within a particular year. Percentages may not sum to 100% due to rounding.



**2008-2009
INTERIM PERFORMANCE REPORT
SOCIAL STUDIES DISAGGREGATION
Performance Level Percents**

School: Nancy Elementary School
District: Pulaski County
Code: 501280
Grade: 05

		0%	10%	20%	30%	40%	50%	60%	70%	80%	90%	100%	N%	A%	P%	D%	P+D%	
All Students	Tested	4	15	44				37										
	100 Days	4	16	44				36										
Female	Tested	8	8	50				35										
	100 Days	8	8	48				36										
Male	Tested	23		38				38										
	100 Days	24		40				36										
White (Non-Hispanic)	Tested	4	12	45				39										
	100 Days	4	13	45				38										
African-American	Tested																	
African-American	100 Days																	
Hispanic	Tested																	
Hispanic	100 Days																	
Asian	Tested																	
Asian	100 Days																	
Migrant	Tested																	
Migrant	100 Days																	
Identified LEP	Tested																	
Identified LEP	100 Days																	
Free/Reduced Lunch Approved	Tested	5	18	50				26										
	100 Days	6	19	50				25										
Disability	Tested																	
	100 Days																	

Tested Students		N%	A%	P%	D%	P+D%
Total		4	15	44	37	80.77
Female		8	8	50	35	84.62
Male		0	23	38	38	76.92
White (Non-Hispanic)		4	12	45	39	83.67
African-American						
Hispanic	Unreportable*					
Asian						
Other						
Title I		4	15	44	37	80.77
Migrant						
Identified LEP						
Extended Sch Services		0	40	33	27	60.00
Gifted/Talented		0	0	25	75	100.00
F/R Lunch Approved		5	18	50	26	76.32
Vocational/2 Credits						
Disability	Unreportable*					
Alternate Assessment						
100 Day Students						
Total		4	16	44	36	80.00
Female		8	8	48	36	84.00
Male		0	24	40	36	76.00
White (Non-Hispanic)		4	13	45	38	82.98
African-American						
Hispanic	Unreportable*					
Asian						
Other						
Title I		4	16	44	36	80.00
Migrant						
Identified LEP						
Extended Sch Services		0	40	33	27	60.00
Gifted/Talented		0	0	27	73	100.00
F/R Lunch Approved		6	19	50	25	75.00
Vocational/2 Credits						
Disability	Unreportable*					
Alternate Assessment						

■ Novice
■ Apprentice
■ Proficient
■ Distinguished

Percentage may not sum to 100% due to rounding. 'Unreportable*' indicates subpopulations with fewer than 10 students or subpopulations where all students score at the same performance level.



2008-2009
INTERIM PERFORMANCE REPORT
SOCIAL STUDIES CORE CONTENT

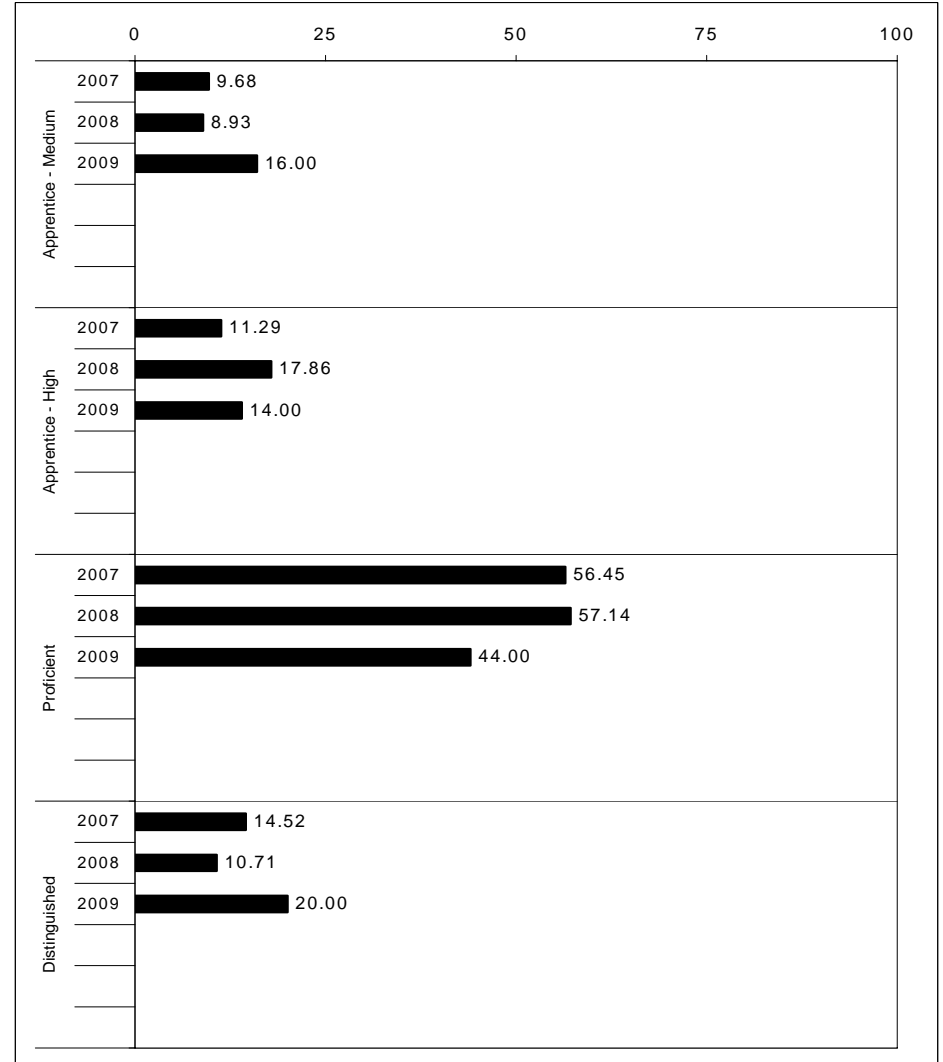
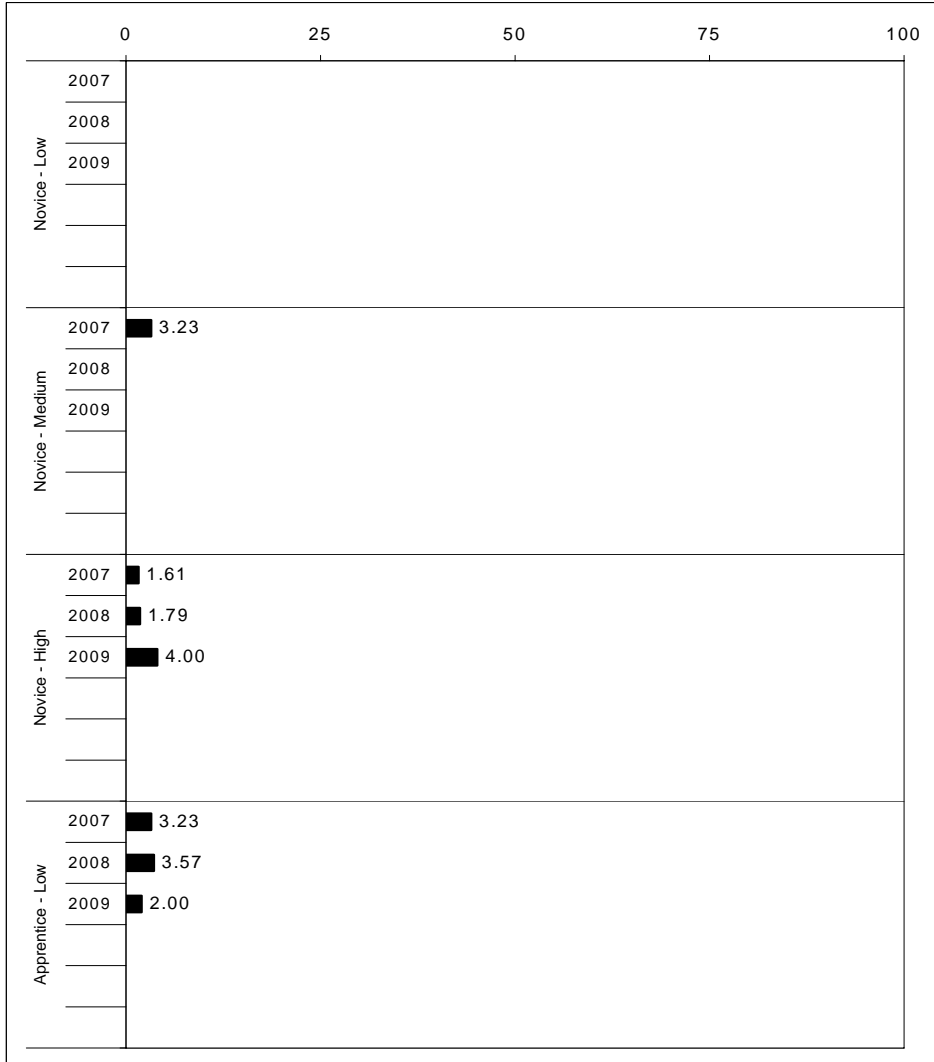
School: Nancy Elementary School
 District: Pulaski County
 Code: 501280
 Grade: 05

	No. Items	No. Observations	SCHOOL								STATE								School -State Mean
			Percents						Mean	Std. Err.	Percents								
			B	0	1	2	3	4					No. Observations	B	0	1	2	3	4
OPEN RESPONSE																			
1.x.x - Government & Civics	2	58	0	5	28	55	9	3	1.8	0.1	56,903	0	5	37	45	10	2	1.7	0.1
2.x.x - Cultures & Societies	1	7							***		8,151	0	4	21	56	15	4	1.9	
3.x.x - Economics	1	50	0	6	18	42	34	0	2.0	0.1	48,828	0	11	33	41	12	3	1.6	0.4
4.x.x - Geography	2	16	0	13	31	31	25	0	1.7	0.2	16,077	0	9	32	39	17	3	1.7	0.0
5.x.x - Historical Perspective	3	69	0	3	30	58	9	0	1.7	0.1	65,353	0	7	35	46	10	2	1.7	0.0
MULTIPLE CHOICE																			
1.x.x - Government & Civics	14	326	82	18	0				0.82	0.03	317,571	66	34	0				0.66	0.16
2.x.x - Cultures & Societies	11	217	85	15	0				0.85	0.03	211,383	70	30	0				0.69	0.16
3.x.x - Economics	11	258	83	17	0				0.83	0.03	252,215	73	27	0				0.73	0.10
4.x.x - Geography	16	384	68	32	0				0.68	0.02	374,337	66	34	0				0.66	0.02
5.x.x - Historical Perspective	27	600	84	16	0				0.84	0.02	586,076	69	31	0				0.69	0.15



2008-2009
INTERIM PERFORMANCE REPORT
WRITING ON-DEMAND TREND DATA
Performance Level Percents

School: Nancy Elementary School
 District: Pulaski County
 Code: 501280
 Grade: 05



The horizontal bar represents the percent of students scoring at a performance level within a particular year. Percentages may not sum to 100% due to rounding.



2008-2009
INTERIM PERFORMANCE REPORT
WRITING ON-DEMAND DISAGGREGATION
Performance Level Percents

School: Nancy Elementary School
 District: Pulaski County
 Code: 501280
 Grade: 05

		0%	10%	20%	30%	40%	50%	60%	70%	80%	90%	100%	N%	A%	P%	D%	P+D%	
All Students	Tested	4	31	46	19								Tested Students					
	100 Days	4	32	44	20								Total	4	31	46	19	65.38
Female	Tested	4	27	54	15								Female	4	27	54	15	69.23
	100 Days	4	28	52	16								Male	4	35	38	23	61.54
Male	Tested	4	35	38	23								White (Non-Hispanic)	2	33	45	20	65.31
	100 Days	4	36	36	24								African-American	Unreportable*				
White (Non-Hispanic)	Tested	2	33	45	20								Hispanic	Unreportable*				
	100 Days	2	34	43	21								Asian					
African-American	Tested												Other					
	100 Days												Title I	4	31	46	19	65.38
Hispanic	Tested												Migrant					
	100 Days												Identified LEP					
Asian	Tested												Extended Sch Services	7	47	47	0	46.67
	100 Days												Gifted/Talented	0	8	67	25	91.67
Migrant	Tested												F/R Lunch Approved	5	39	42	13	55.26
	100 Days												Vocational/2 Credits					
Identified LEP	Tested												Disability	Unreportable*				
	100 Days												Alternate Assessment					
Free/Reduced Lunch Approved	Tested	5	39	42	13								100 Day Students					
	100 Days	6	42	39	14								Total	4	32	44	20	64.00
Disability	Tested												Female	4	28	52	16	68.00
	100 Days												Male	4	36	36	24	60.00
													White (Non-Hispanic)	2	34	43	21	63.83
													African-American	Unreportable*				
													Hispanic	Unreportable*				
													Asian					
													Other					
													Title I	4	32	44	20	64.00
													Migrant					
													Identified LEP					
													Extended Sch Services	7	47	47	0	46.67
													Gifted/Talented	0	9	64	27	90.91
													F/R Lunch Approved	6	42	39	14	52.78
													Vocational/2 Credits					
													Disability	Unreportable*				
													Alternate Assessment					

■ Novice
■ Apprentice
■ Proficient
■ Distinguished

Percentage may not sum to 100% due to rounding. 'Unreportable*' indicates subpopulations with fewer than 10 students or subpopulations where all students score at the same performance level.



2008-2009
INTERIM PERFORMANCE REPORT
WRITING ON-DEMAND CORE CONTENT

School: Nancy Elementary School
 District: Pulaski County
 Code: 501280
 Grade: 05

WRITING PROMPT	SCHOOL												STATE												School -State Mean
	No. Observations	Percents											Mean	Percents											
	B	0	1	2	3	4	5	6	7	8		B		0	1	2	3	4	5	6	7	8			
Inform																									
1.X.X - Content	16	0	0	0	6	6	31	31	25	0	0	4.63	0	1	1	9	9	34	18	21	4	2	4.43	0.20	
2.X.X - Structure	16	0	0	0	6	0	44	25	25	0	0	4.63	0	1	2	9	10	35	19	19	3	1	4.33	0.30	
3.X.X - Convention	16	0	0	0	6	0	44	25	19	6	0	4.69	0	0	0	12	11	34	19	19	3	1	4.38	0.31	
Narrate for a purpose																									
1.X.X - Content	19	0	0	0	21	11	21	16	32	0	0	4.26	0	1	1	10	9	36	18	21	3	1	4.35	-0.09	
2.X.X - Structure	19	0	0	0	16	11	32	11	32	0	0	4.32	0	1	2	10	10	37	17	19	3	1	4.27	0.05	
3.X.X - Convention	19	0	0	0	16	16	26	11	32	0	0	4.26	0	0	0	12	10	36	18	19	3	1	4.33	-0.07	
Persuade																									
1.X.X - Content	15	0	0	0	0	13	20	40	13	13	0	4.93	0	1	1	8	8	33	19	21	5	3	4.50	0.43	
2.X.X - Structure	15	0	0	0	0	13	20	47	7	13	0	4.87	0	2	2	9	10	33	19	20	5	2	4.42	0.45	
3.X.X - Convention	15	0	0	0	0	13	13	47	13	13	0	5.00	0	0	0	11	10	32	19	20	5	2	4.50	0.50	

MULTIPLE CHOICE	No. Items	SCHOOL						STATE						School -State Mean
		No. Observations	Percents			Mean	Std. Err.	No. Observations	Percents			Mean		
		Correct	Incorrect	Omit/Mult					Correct	Incorrect	Omit/Mult			
4.x.x - Writing Process	52	600	78	22	0	0.78	0.02	585,936	73	27	0	0.73	0.05	
4.10.x - Revising	16	135	68	32	0	0.68	0.04	130,317	66	34	0	0.66	0.02	
4.11.x - Editing	36	465	81	19	0	0.81	0.02	455,619	75	24	0	0.75	0.06	