



Interim Performance Report

In March 2009, the Kentucky General Assembly passed Senate Bill 1 (SB1) that was subsequently signed into law by the Governor. SB1 calls for a significant overhaul of the state's assessment and accountability system. The new assessment system begins in the spring of 2012. The school years of 2008-2009, 2009-2010 and 2010-2011 are described in SB1 as an interim period. This three-year period allows Kentucky to develop the new assessment system and to carry on state and federal testing requirements.

The Interim Performance Report includes the Kentucky Core Content Test (KCCT) in Reading (grades 3-8 and 10), Mathematics (grades 3-8 and 11), Science (grades 4, 7 and 11), Social Studies (grades 5, 8 and 11) and Writing On-Demand (grades 5, 8 and 12). The KCCT is based on the Kentucky Core Content for Assessment (Version 4.1) and contains multiple choice and open response questions. The Writing On-Demand test uses writing prompts that require students to craft a piece of writing in a 60 minute period.

The KCCT is developed under the direction of content advisory committees of Kentucky educators who draft, review and select test questions. All test items are reviewed by a bias review committee to enhance the fairness of items for all Kentucky students.

The KCCT continues to fulfill the requirements of the federal statute known as the No Child Left Behind Act of 2001. A separate accountability report for No Child Left Behind (NCLB) is published by the Kentucky Department of Education.

The Interim Performance Report focuses entirely on the five state-required content areas and provides data for schools or districts. The data in this report is not used directly for state accountability; although, these results can fulfill the requirements of Senate Bill 168 from 2002 and may be used by schools or districts for their own local accountability needs.

Performance standards are based on descriptions of Novice, Apprentice, Proficient and Distinguished (NAPD) student performance levels specific to the content area and grade being assessed. The performance standards, in conjunction with Kentucky's Core Content for Assessment, should allow instruction to better focus on the content area to be taught and on how well students must demonstrate achievement in each content area.

Reporting Changes for 2009

Based on SB1, Kentucky will not be reporting state accountability and academic indices as in the past. The report does have several familiar pages with performance level (NAPD) trend, core content and disaggregation data per content area. Districts and schools will still see distributions of how students scored in the Novice (with sublevels), Apprentice (with sublevels), Proficient and Distinguished performance levels.

Confidentiality Changes

Due to federal regulations around the Family Education Rights and Privacy Act (FERPA), the numbers of students have been removed. Though there is a need to report as much data as possible, there is also a paramount need to maintain the confidential aspects of individual scores. When scores are reported in what is commonly called "small cells" where very few students may be categorized, there is the possibility of revealing individual scores when numbers are reported. Numbers are reported to each district in a confidential report that accompanies the public Interim Performance Report.

2008-2009

INTERIM PERFORMANCE REPORT

School: Pulaski County High School

District: Pulaski County

Code: 501380

Grade: 09-12

CONTENTS OF THIS REPORT

Introduction	1
Academic Trend Data	
Reading Results	2-4
Mathematics Results	5-7
Science Results	8-10
Social Studies Results	11-13
Writing Results	14-16

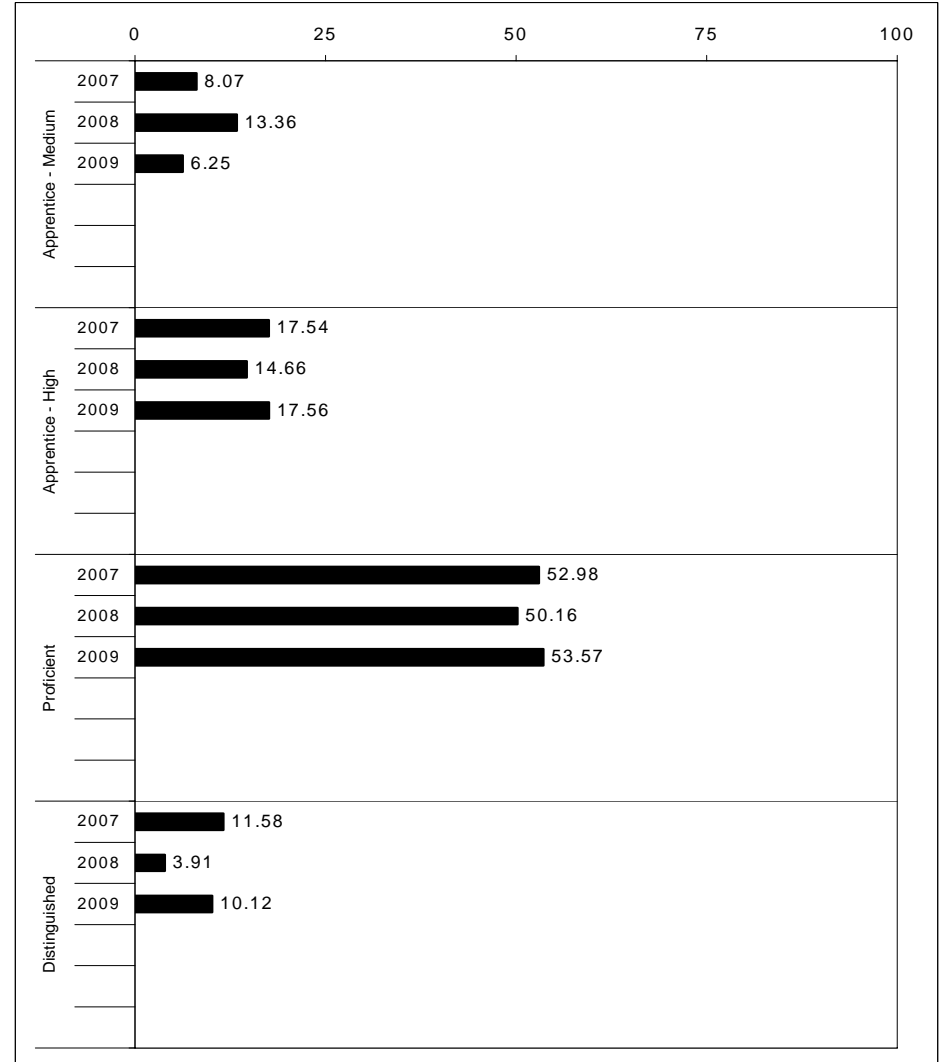
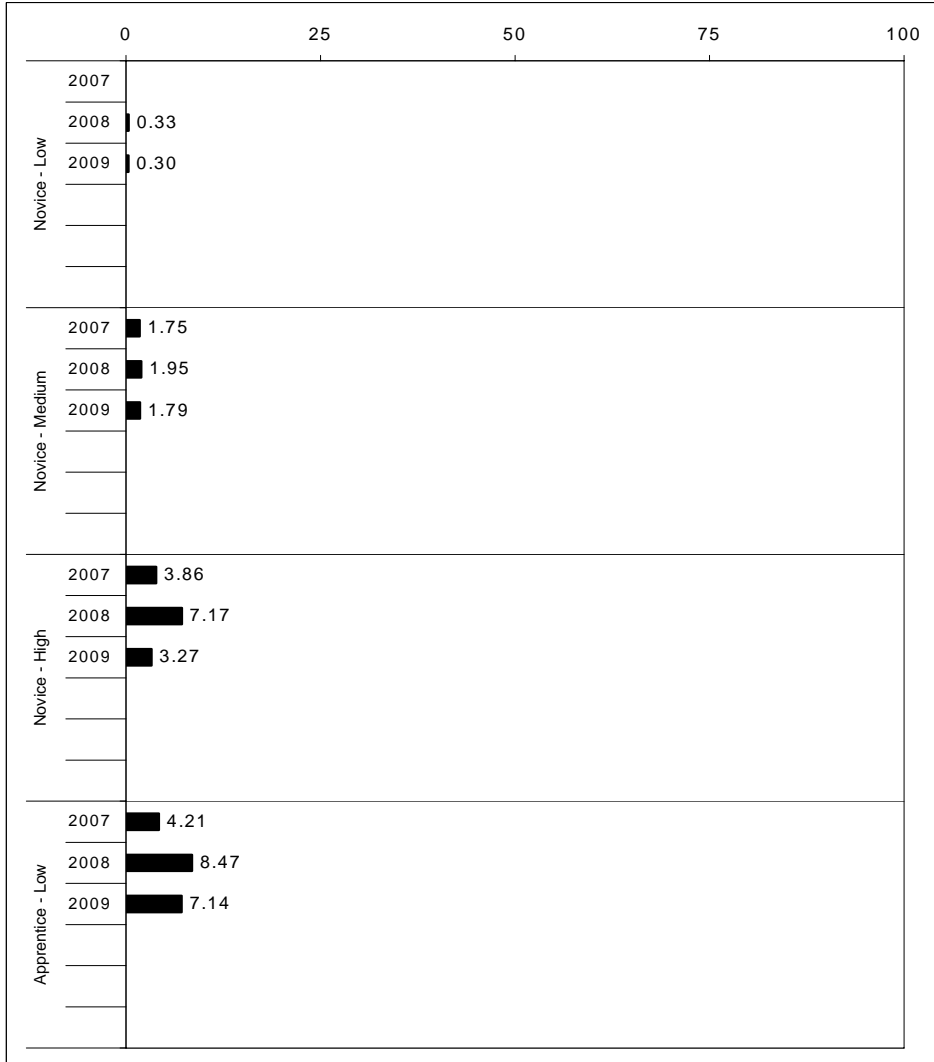
For more information, refer to the 2009 Interim Assessment Interpretative Guide on the Kentucky Department of Education Web site (www.education.ky.gov).





2008-2009
INTERIM PERFORMANCE REPORT
READING TREND DATA
Performance Level Percents

School: Pulaski County High School
 District: Pulaski County
 Code: 501380
 Grade: HIGH



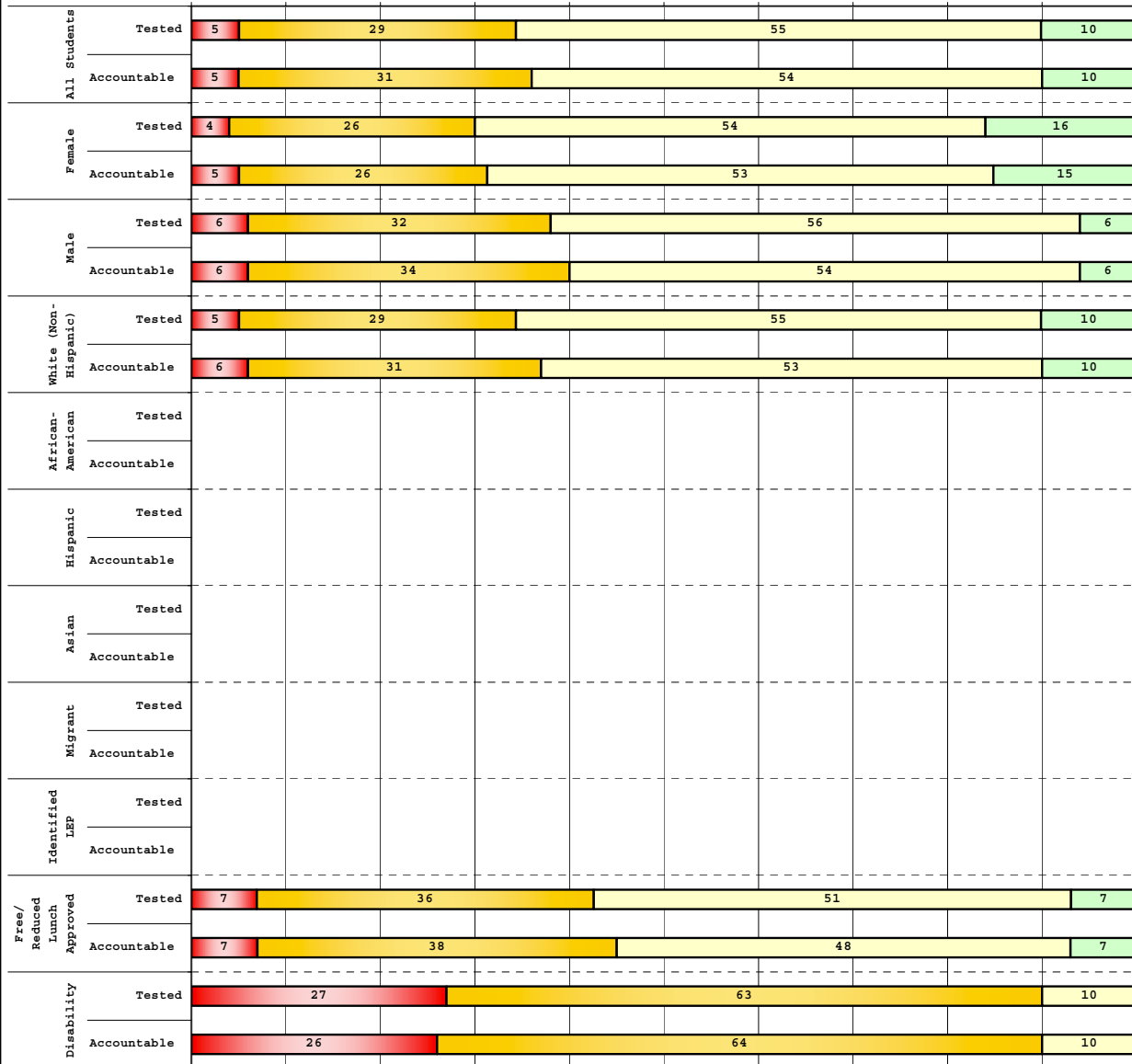
The horizontal bar represents the percent of students scoring at a performance level within a particular year. Percentages may not sum to 100% due to rounding.



**2008-2009
INTERIM PERFORMANCE REPORT
READING DISAGGREGATION
Performance Level Percents**

School: Pulaski County High School
 District: Pulaski County
 Code: 501380
 Grade: 10

0% 10% 20% 30% 40% 50% 60% 70% 80% 90% 100%

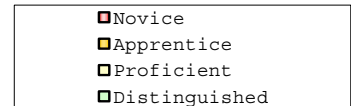


Tested Students

	N%	A%	P%	D%	P+D%
Total	5	29	55	10	65.34
Female	4	26	54	16	69.50
Male	6	32	56	6	62.16
White (Non-Hispanic)	5	29	55	10	65.19
African-American	Unreportable*				
Hispanic	Unreportable*				
Asian					
Other	Unreportable*				
Title I					
Migrant	Unreportable*				
Identified LEP	Unreportable*				
Extended Sch Services					
Gifted/Talented	0	9	61	29	90.63
F/R Lunch Approved	7	36	51	7	57.07
Vocational/2 Credits	9	26	55	10	64.91
Disability	27	63	10	0	9.76
Alternate Assessment	Unreportable*				

NCLB Accountable Students

	N%	A%	P%	D%	P+D%
Total	5	31	54	10	63.69
Female	5	26	53	15	68.75
Male	6	34	54	6	59.90
White (Non-Hispanic)	6	31	53	10	63.61
African-American	Unreportable*				
Hispanic	Unreportable*				
Asian					
Other	Unreportable*				
Title I					
Migrant	Unreportable*				
Identified LEP	Unreportable*				
Extended Sch Services	Unreportable*				
Gifted/Talented	0	9	62	29	90.72
F/R Lunch Approved	7	38	48	7	54.59
Vocational/2 Credits	8	26	56	10	65.77
Disability	26	64	10	0	10.26
Alternate Assessment	Unreportable*				



Percentage may not sum to 100% due to rounding. 'Unreportable*' indicates subpopulations with fewer than 10 students or subpopulations where all students score at the same performance level.



2008-2009
INTERIM PERFORMANCE REPORT
READING CORE CONTENT

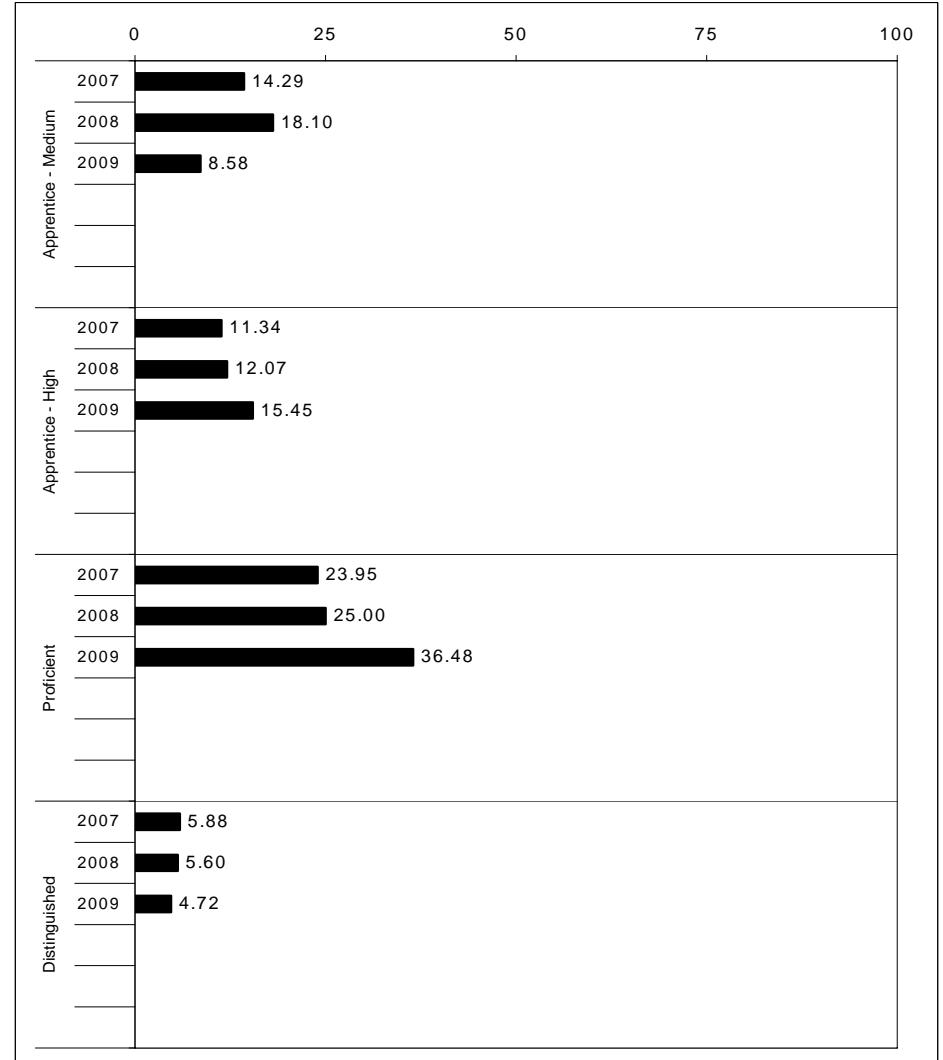
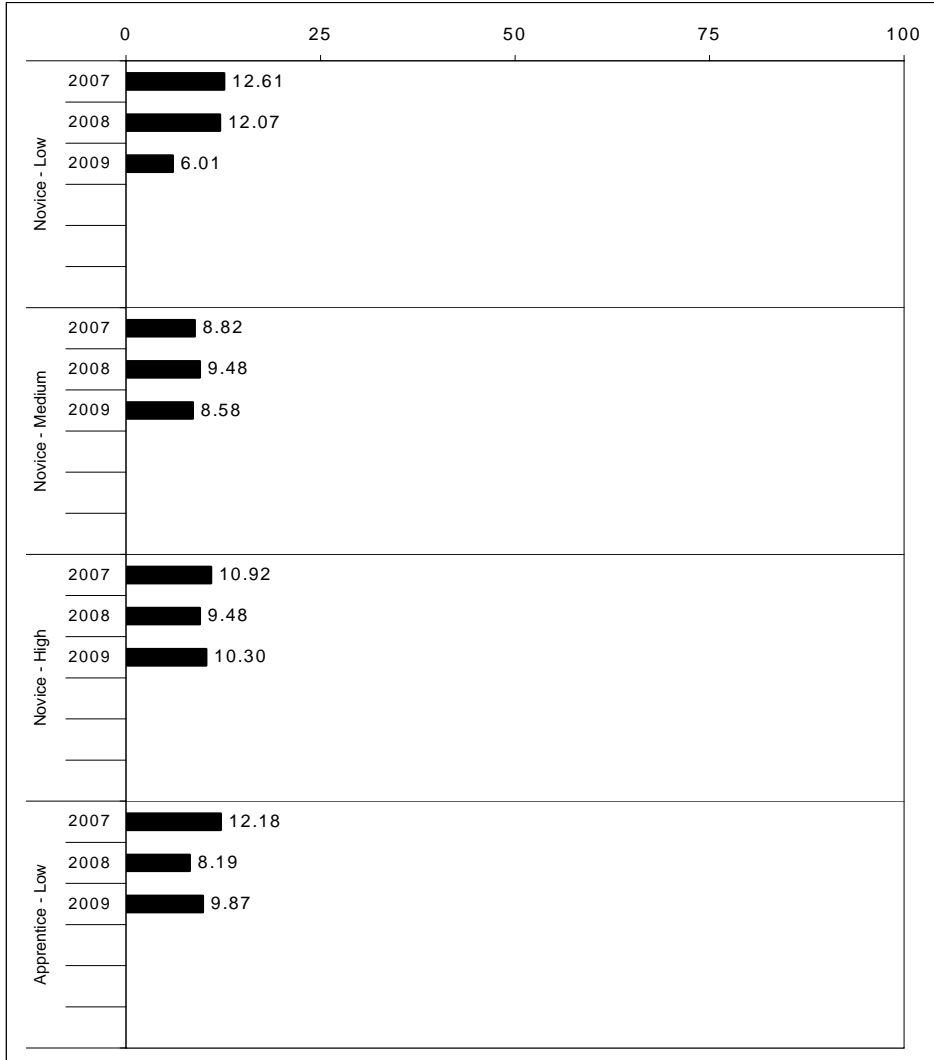
School: Pulaski County High School
 District: Pulaski County
 Code: 501380
 Grade: 10

	No. Items	No. Observations	SCHOOL							Mean	Std. Err.	No. Observations	STATE							Mean	School -State Mean
			B	0	1	2	3	4	B				0	1	2	3	4				
OPEN RESPONSE																					
2.0.x - Developing Understanding	2	385	1	1	14	51	26	7	2.2	0.0	56,492	0	1	13	48	28	10	2.3	-0.1		
3.0.x - Interpreting Text	4	486	0	4	11	44	27	13	2.3	0.0	72,472	1	3	13	44	29	11	2.3	0.0		
5.0.x - Critical Stance	2	119	2	7	20	38	27	7	2.0	0.1	16,533	1	6	17	43	25	9	2.1	-0.1		
MULTIPLE CHOICE																					
1.0.x - Forming a Foundation	21	1,680	80	19	0				0.80	0.01	249,926	79	21	0				0.79	0.01		
2.0.x - Developing Understanding	78	5,991	76	24	0				0.76	0.01	875,285	75	25	0				0.75	0.01		
3.0.x - Interpreting Text	18	1,255	76	24	0				0.76	0.01	184,813	74	26	0				0.74	0.02		
5.0.x - Critical Stance	28	2,631	73	27	0				0.73	0.01	387,431	71	29	0				0.71	0.02		



2008-2009
INTERIM PERFORMANCE REPORT
MATHEMATICS TREND DATA
Performance Level Percents

School: Pulaski County High School
 District: Pulaski County
 Code: 501380
 Grade: HIGH



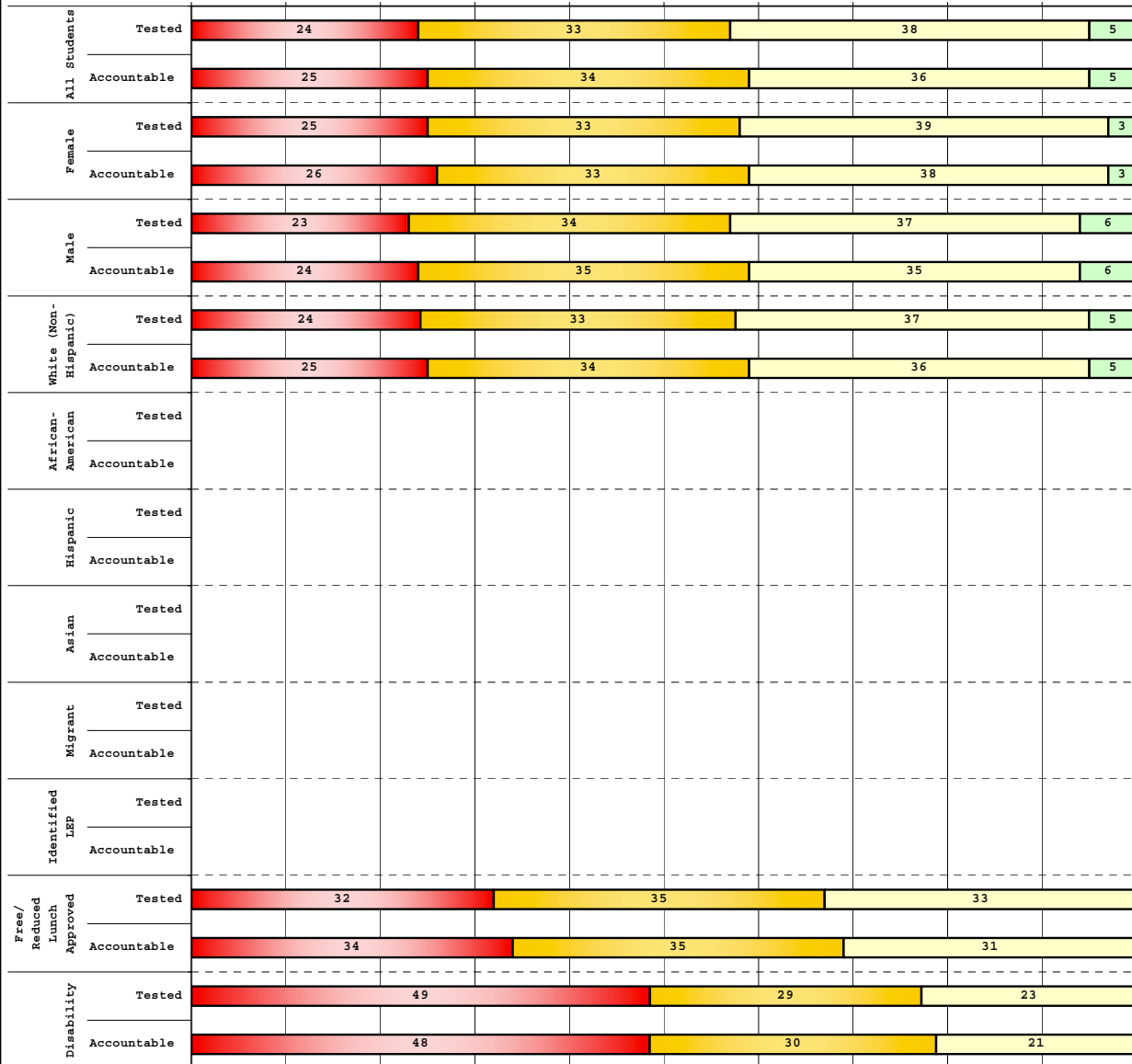
The horizontal bar represents the percent of students scoring at a performance level within a particular year. Percentages may not sum to 100% due to rounding.



**2008-2009
INTERIM PERFORMANCE REPORT
MATHEMATICS DISAGGREGATION
Performance Level Percents**

School: Pulaski County High School
 District: Pulaski County
 Code: 501380
 Grade: 11

0% 10% 20% 30% 40% 50% 60% 70% 80% 90% 100%



Tested Students

	N%	A%	P%	D%	P+D%
Total	24	33	38	5	42.44
Female	25	33	39	3	42.06
Male	23	34	37	6	43.08
White (Non-Hispanic)	24	33	37	5	42.06
African-American	Unreportable*				
Hispanic	Unreportable*				
Asian	Unreportable*				
Other					
Title I					
Migrant	Unreportable*				
Identified LEP					
Extended Sch Services					
Gifted/Talented	6	24	60	11	70.24
F/R Lunch Approved	32	35	33	0	33.08
Vocational/2 Credits	31	29	35	6	40.28
Disability	49	29	23	0	22.86
Alternate Assessment	Unreportable*				

NCLB Accountable Students

	N%	A%	P%	D%	P+D%
Total	25	34	36	5	41.20
Female	26	33	38	3	41.35
Male	24	35	35	6	41.09
White (Non-Hispanic)	25	34	36	5	40.61
African-American	Unreportable*				
Hispanic	Unreportable*				
Asian	Unreportable*				
Other					
Title I					
Migrant	Unreportable*				
Identified LEP					
Extended Sch Services					
Gifted/Talented	6	25	58	11	69.05
F/R Lunch Approved	34	35	31	0	31.34
Vocational/2 Credits	30	30	35	6	40.85
Disability	48	30	21	0	21.21
Alternate Assessment	Unreportable*				

■ Novice
■ Apprentice
■ Proficient
■ Distinguished

Percentage may not sum to 100% due to rounding. 'Unreportable*' indicates subpopulations with fewer than 10 students or subpopulations where all students score at the same performance level.



2008-2009
INTERIM PERFORMANCE REPORT
MATHEMATICS CORE CONTENT

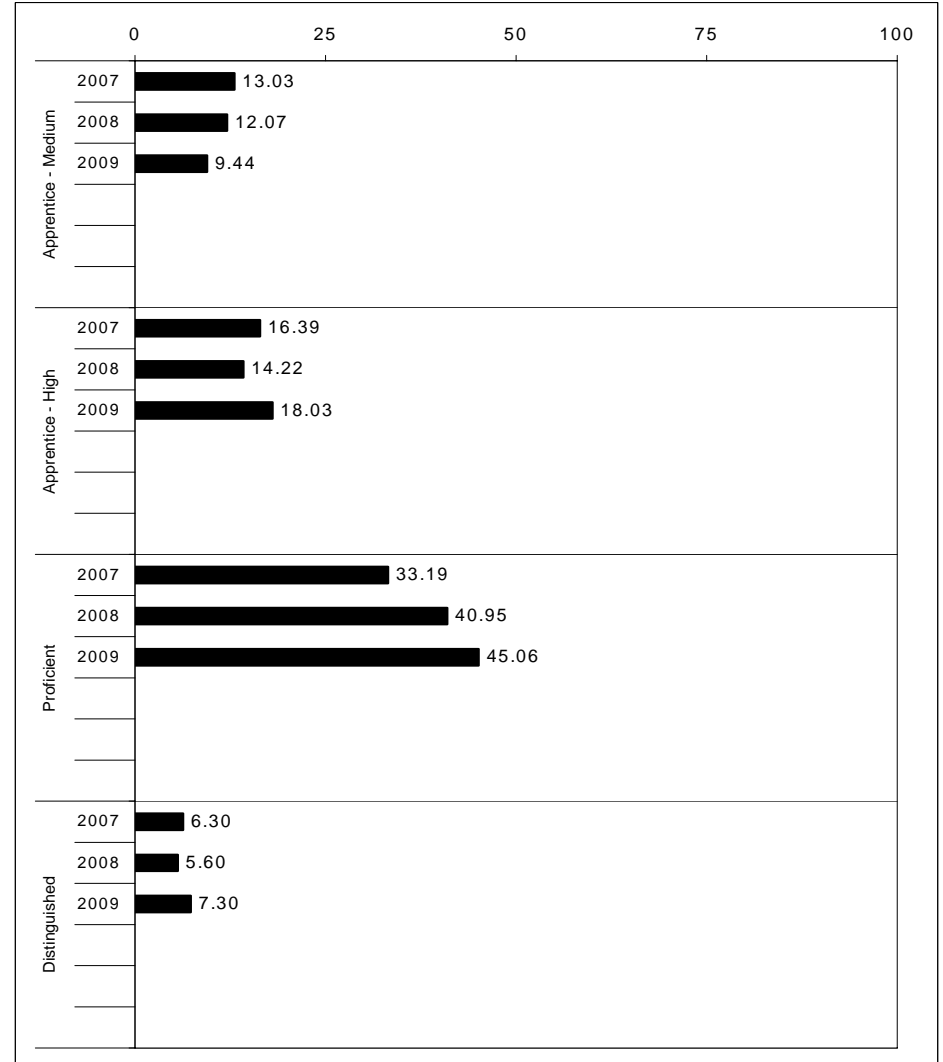
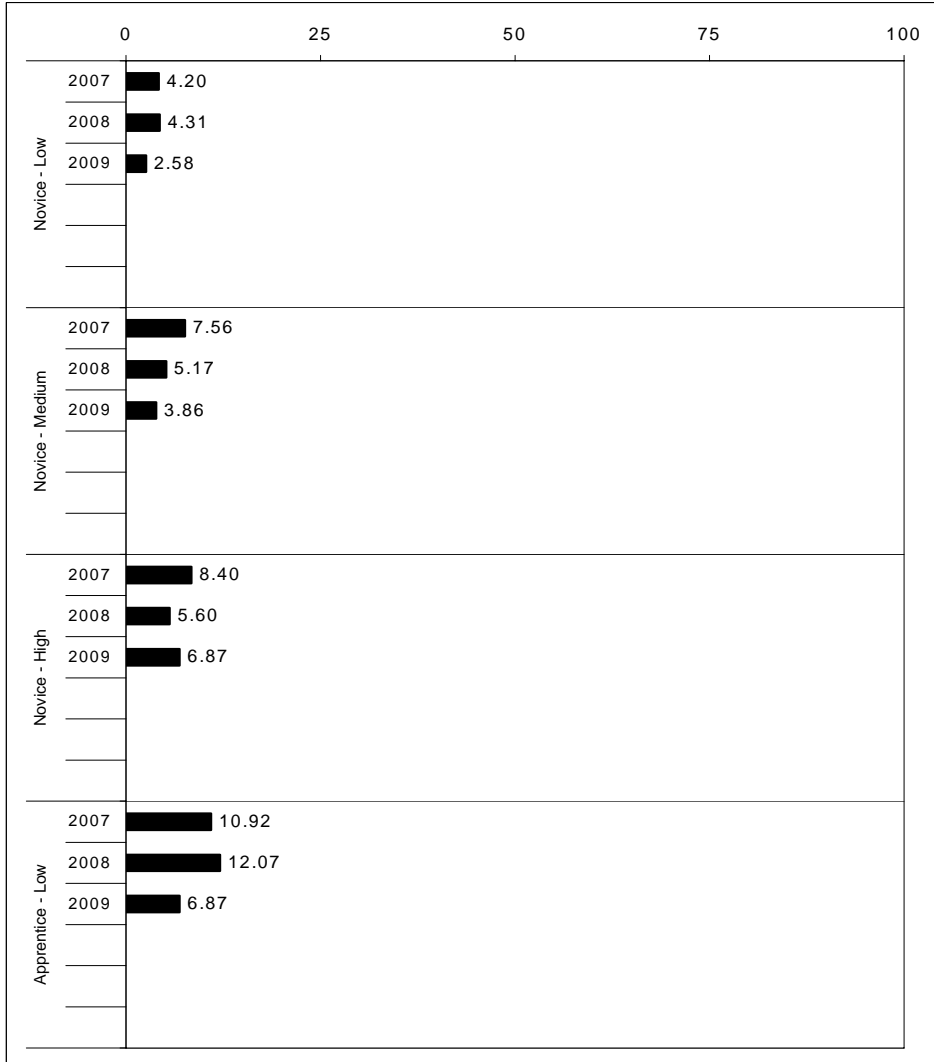
School: Pulaski County High School
 District: Pulaski County
 Code: 501380
 Grade: 11

	No. Items	No. Observations	SCHOOL								Std. Err.	No. Observations	STATE								School -State Mean
			B	0	1	2	3	4	Mean	B			0	1	2	3	4	Mean			
OPEN RESPONSE																					
1.x.x - Number Prop Oper	3	297	3	34	41	11	6	4	1.0	0.1	58,157	1	35	40	14	5	4	1.0	0.0		
2.x.x - Measurement	1	43	7	37	9	23	0	23	1.5	0.2	7,732	2	41	8	27	11	10	1.4	0.1		
3.x.x - Geometry	2	74	5	35	39	8	5	7	1.0	0.1	14,423	1	32	41	12	8	6	1.1	-0.1		
4.x.x - Data Analysis & Probabilit	1	225	2	15	61	15	7	0	1.1	0.1	43,744	1	11	58	16	11	4	1.4	-0.3		
5.x.x - Algebraic Thinking	4	525	3	23	30	25	12	6	1.4	0.1	101,871	1	26	31	22	9	11	1.5	-0.1		
MULTIPLE CHOICE																					
1.x.x - Number Prop Oper	15	1,492	Correct	Incorrect	Omit/Mult				0.66	0.01	291,257	Correct	Incorrect	Omit/Mult				0.65	0.01		
2.x.x - Measurement	8	867	66	34	0				0.50	0.02	168,327	65	35	0				0.47	0.03		
3.x.x - Geometry	13	1,421	50	50	0				0.51	0.01	276,322	47	52	0				0.54	-0.03		
4.x.x - Data Analysis & Probabilit	11	978	51	50	0				0.59	0.02	189,924	54	46	0				0.58	0.01		
5.x.x - Algebraic Thinking	28	2,561	59	41	0				0.52	0.01	496,648	58	42	0				0.53	-0.01		
			52	48	0							53	47	0							



2008-2009
INTERIM PERFORMANCE REPORT
SCIENCE TREND DATA
Performance Level Percents

School: Pulaski County High School
 District: Pulaski County
 Code: 501380
 Grade: 11

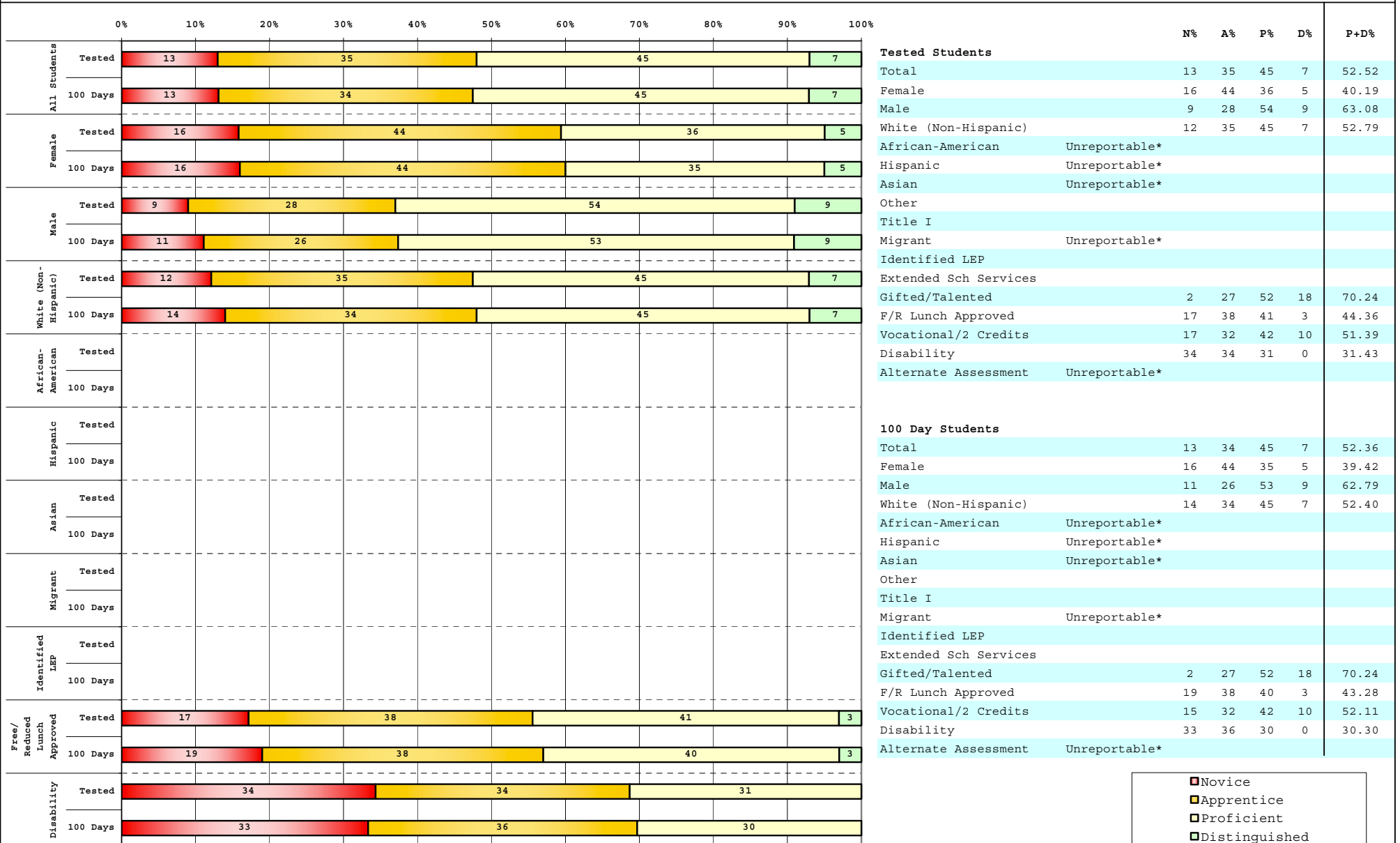


The horizontal bar represents the percent of students scoring at a performance level within a particular year. Percentages may not sum to 100% due to rounding.



**2008-2009
INTERIM PERFORMANCE REPORT
SCIENCE DISAGGREGATION
Performance Level Percents**

School: Pulaski County High School
District: Pulaski County
Code: 501380
Grade: 11



■	Novice
■	Apprentice
■	Proficient
■	Distinguished

Percentage may not sum to 100% due to rounding. 'Unreportable*' indicates subpopulations with fewer than 10 students or subpopulations where all students score at the same performance level.



2008-2009
INTERIM PERFORMANCE REPORT
SCIENCE CORE CONTENT

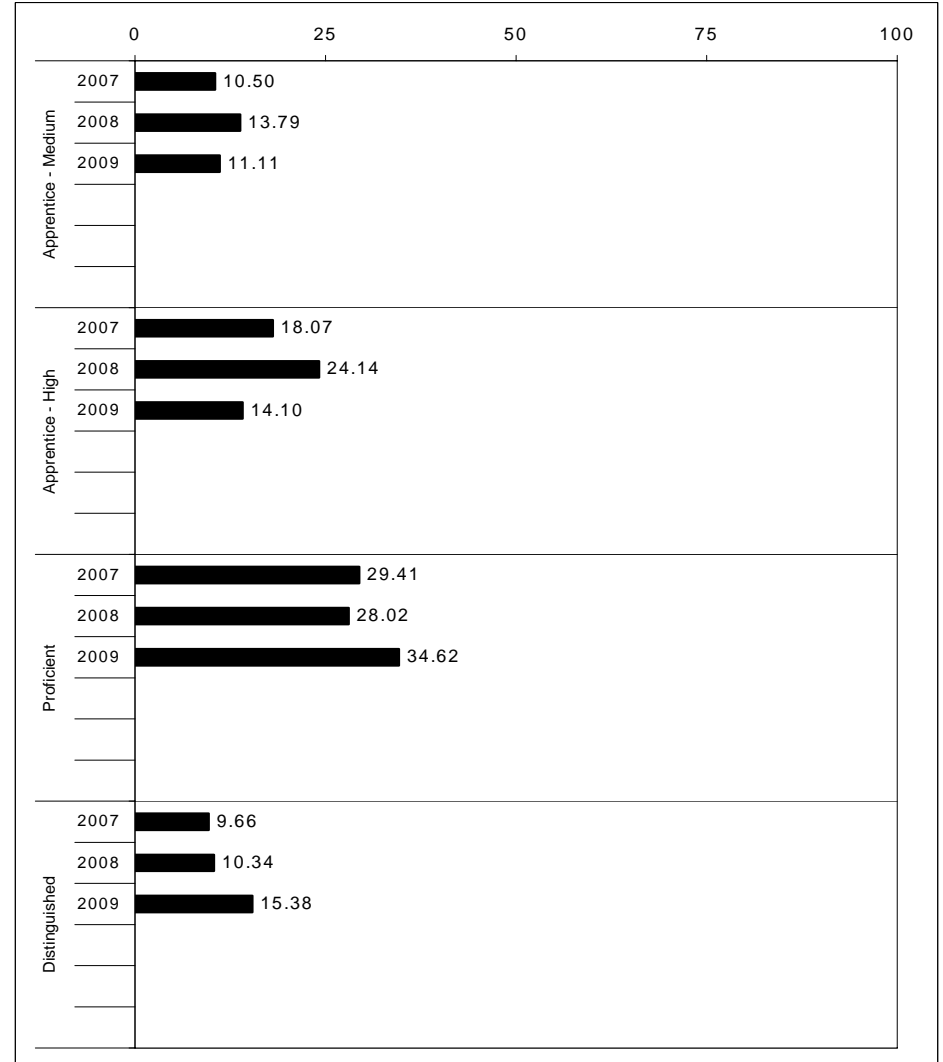
School: Pulaski County High School
 District: Pulaski County
 Code: 501380
 Grade: 11

	No. Items	No. Observations	SCHOOL								Std. Err.	No. Observations	STATE								School -State Mean
			B	0	1	2	3	4	Mean	B			0	1	2	3	4	Mean			
OPEN RESPONSE																					
1.x.x - Physical Science	2	68	1	16	28	29	13	12	1.7	0.1	14,423	1	16	32	31	12	8	1.6	0.1		
2.x.x - Earth Space Science	2	263	0	6	19	35	32	7	2.1	0.1	50,954	1	14	20	32	26	8	1.9	0.2		
3.x.x - Biological Science	3	301	1	33	29	25	8	3	1.2	0.1	58,124	2	38	31	18	7	3	1.0	0.2		
4.x.x - Unifying Concepts	3	306	0	10	47	30	8	4	1.5	0.1	58,685	1	11	52	23	10	3	1.4	0.1		
MULTIPLE CHOICE																					
1.x.x - Physical Science	14	1,462	58	42	0				0.58	0.01	284,043	57	42	0				0.57	0.01		
2.x.x - Earth Space Science	14	1,463	60	40	0				0.60	0.01	284,629	56	43	0				0.56	0.04		
3.x.x - Biological Science	18	1,800	52	48	0				0.52	0.01	349,952	46	53	0				0.46	0.06		
4.x.x - Unifying Concepts	26	2,475	61	39	0				0.61	0.01	481,184	53	47	0				0.53	0.08		



2008-2009
INTERIM PERFORMANCE REPORT
SOCIAL STUDIES TREND DATA
Performance Level Percents

School: Pulaski County High School
 District: Pulaski County
 Code: 501380
 Grade: 11

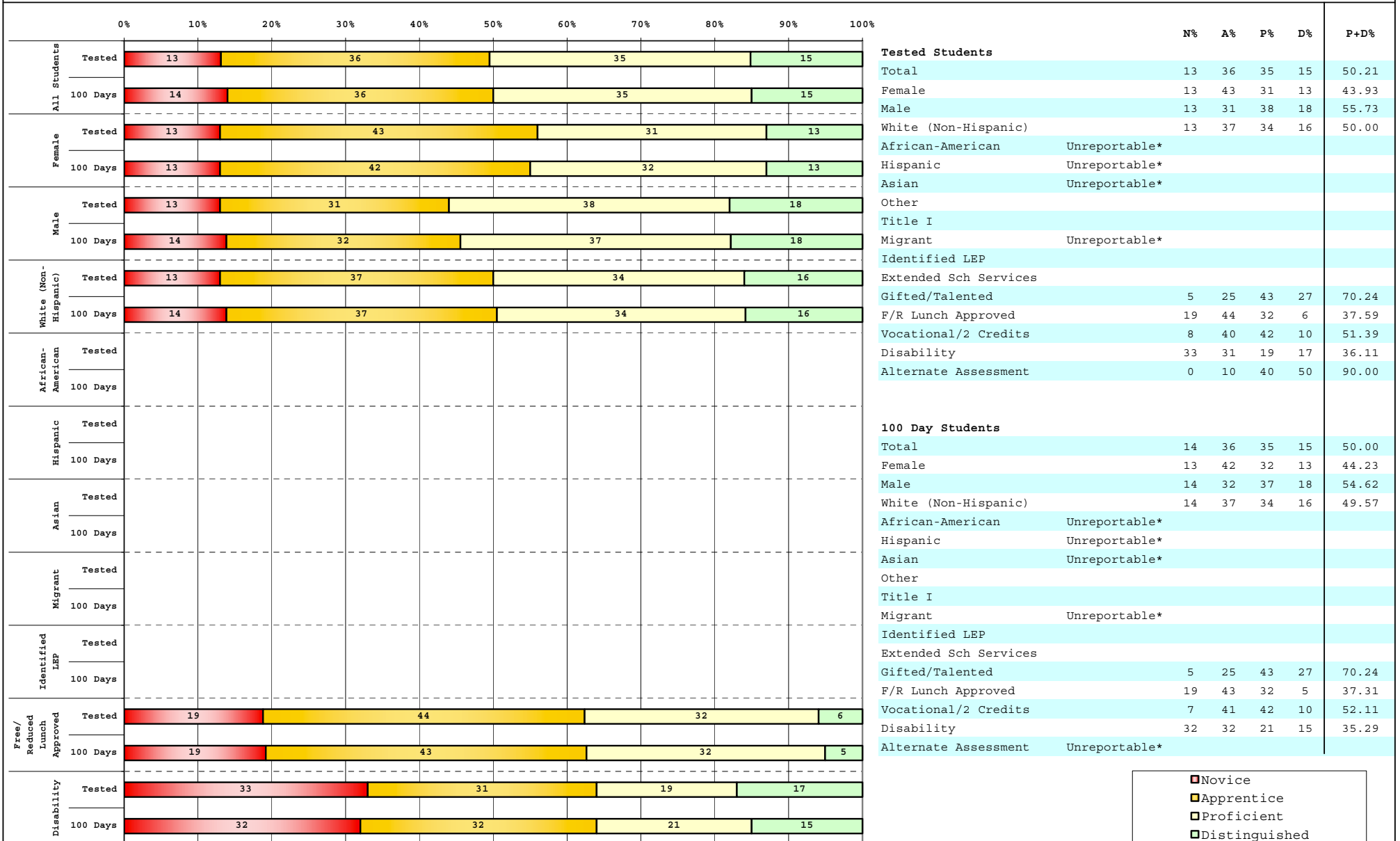


The horizontal bar represents the percent of students scoring at a performance level within a particular year. Percentages may not sum to 100% due to rounding.



**2008-2009
INTERIM PERFORMANCE REPORT
SOCIAL STUDIES DISAGGREGATION
Performance Level Percents**

School: Pulaski County High School
District: Pulaski County
Code: 501380
Grade: 11



■	Novice
■	Apprentice
■	Proficient
■	Distinguished

Percentage may not sum to 100% due to rounding. 'Unreportable*' indicates subpopulations with fewer than 10 students or subpopulations where all students score at the same performance level.



2008-2009
INTERIM PERFORMANCE REPORT
SOCIAL STUDIES CORE CONTENT

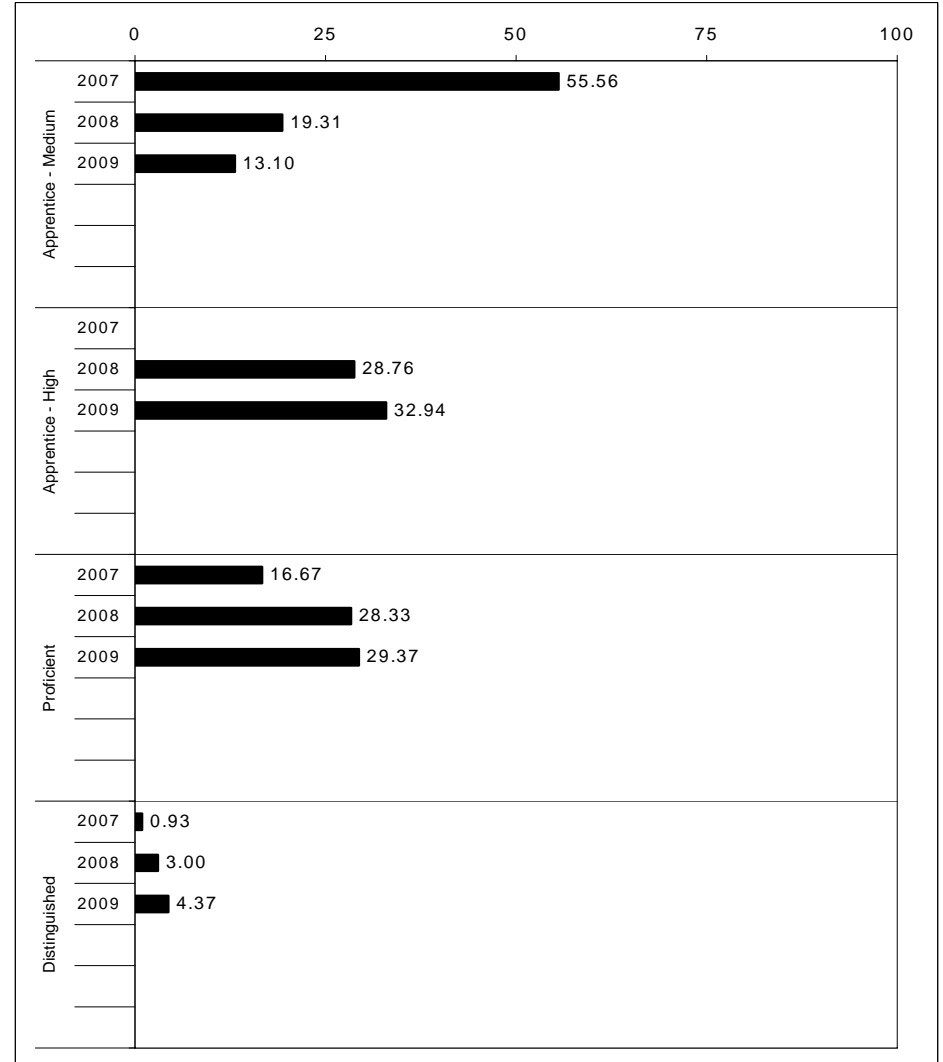
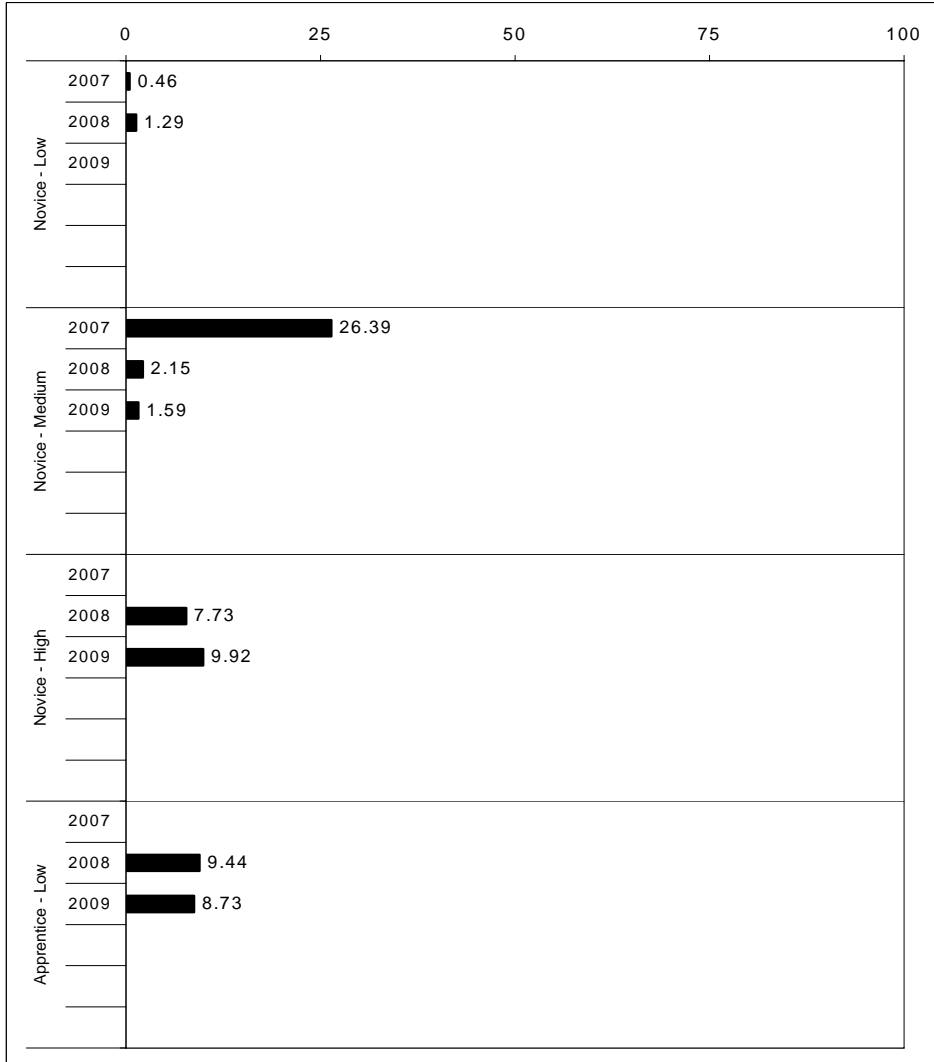
School: Pulaski County High School
 District: Pulaski County
 Code: 501380
 Grade: 11

	No. Items	No. Observations	SCHOOL							Mean	Std. Err.	No. Observations	STATE							Mean	School -State Mean
			B	0	1	2	3	4	Percents				B	0	1	2	3	4	Percents		
OPEN RESPONSE																					
1.x.x - Government & Civics	2	268	1	7	26	43	18	3	1.8	0.1	51,476	1	11	24	40	18	5	1.8	0.0		
2.x.x - Cultures & Societies	2	260	1	20	32	34	11	1	1.4	0.1	50,960	2	18	25	35	16	5	1.6	-0.2		
3.x.x - Economics	1	38	0	18	21	39	13	8	1.7	0.2	7,210	1	23	26	28	16	6	1.5	0.2		
4.x.x - Geography	1	33	0	24	30	39	6	0	1.3	0.2	7,206	2	16	33	31	14	3	1.5	-0.2		
5.x.x - Historical Perspective	5	569	2	15	31	40	10	1	1.5	0.0	109,600	2	14	30	37	13	4	1.6	-0.1		
MULTIPLE CHOICE																					
1.x.x - Government & Civics	16	1,543	61	39	0				0.61	0.01	298,998	56	44	1				0.56	0.05		
2.x.x - Cultures & Societies	7	640	69	31	0				0.69	0.02	124,016	62	37	0				0.62	0.07		
3.x.x - Economics	12	1,383	72	28	0				0.72	0.01	269,670	65	34	1				0.65	0.07		
4.x.x - Geography	11	1,160	68	31	0				0.68	0.01	225,936	62	38	0				0.62	0.06		
5.x.x - Historical Perspective	39	3,907	67	33	0				0.67	0.01	757,994	61	38	0				0.61	0.06		



2008-2009
INTERIM PERFORMANCE REPORT
WRITING ON-DEMAND TREND DATA
Performance Level Percents

School: Pulaski County High School
 District: Pulaski County
 Code: 501380
 Grade: 12

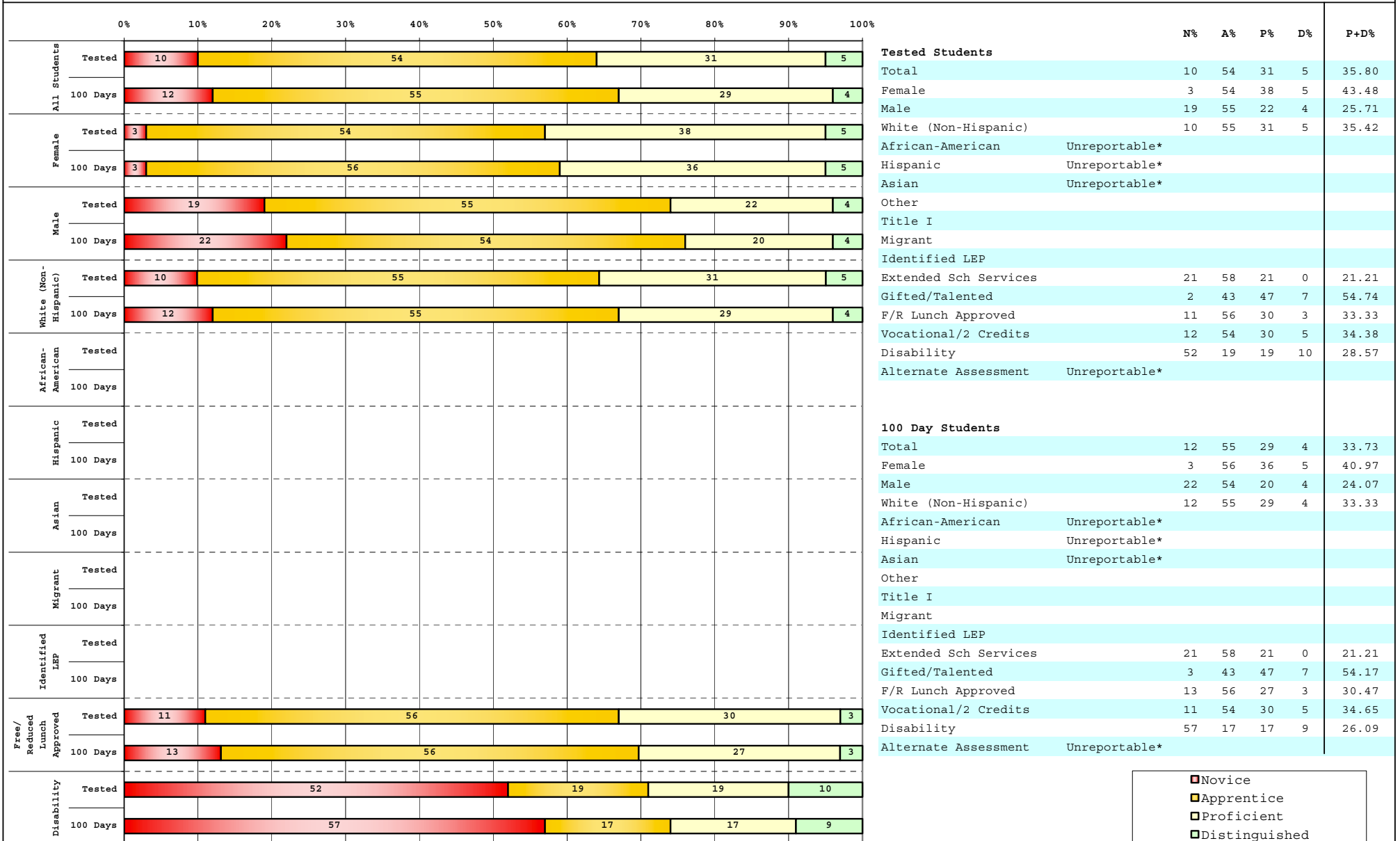


The horizontal bar represents the percent of students scoring at a performance level within a particular year. Percentages may not sum to 100% due to rounding.



**2008-2009
INTERIM PERFORMANCE REPORT
WRITING ON-DEMAND DISAGGREGATION
Performance Level Percents**

School: Pulaski County High School
District: Pulaski County
Code: 501380
Grade: 12



■	Novice
■	Apprentice
■	Proficient
■	Distinguished

Percentage may not sum to 100% due to rounding. 'Unreportable*' indicates subpopulations with fewer than 10 students or subpopulations where all students score at the same performance level.



2008-2009
INTERIM PERFORMANCE REPORT
WRITING ON-DEMAND CORE CONTENT

School: Pulaski County High School
 District: Pulaski County
 Code: 501380
 Grade: 12

WRITING PROMPT	SCHOOL												STATE												School
	No. Observations	Percents											Mean	Percents											Mean
	B	0	1	2	3	4	5	6	7	8		B	0	1	2	3	4	5	6	7	8				
Inform																									
1.X.X - Content	87	0	1	5	10	17	29	22	13	1	2	4.03	0	1	2	10	13	35	17	16	4	2	4.23	-0.20	
2.X.X - Structure	87	0	5	3	8	16	36	18	11	1	1	3.89	0	2	3	10	14	34	17	14	4	2	4.07	-0.18	
3.X.X - Convention	87	0	0	0	16	18	32	18	13	1	1	4.01	0	0	0	14	14	36	17	14	4	2	4.20	-0.19	
Narrate for a purpose																									
1.X.X - Content	40	0	0	0	5	20	35	18	18	5	0	4.38	0	1	2	9	12	35	17	18	5	2	4.34	0.04	
2.X.X - Structure	40	0	0	3	3	23	33	15	20	5	0	4.35	0	2	3	10	13	34	17	16	4	2	4.17	0.18	
3.X.X - Convention	40	0	0	0	8	20	30	20	15	8	0	4.38	0	0	0	12	13	35	17	16	4	2	4.30	0.08	
Persuade																									
1.X.X - Content	365	0	1	1	14	12	36	15	14	6	1	4.16	0	1	2	10	12	36	17	16	4	2	4.27	-0.11	
2.X.X - Structure	365	0	4	3	10	13	36	14	14	4	1	3.98	0	2	3	10	13	36	17	14	3	2	4.11	-0.13	
3.X.X - Convention	365	0	0	0	15	12	39	14	16	3	1	4.17	0	0	0	12	13	38	18	14	4	2	4.25	-0.08	