



Interim Performance Report

In March 2009, the Kentucky General Assembly passed Senate Bill 1 (SB1) that was subsequently signed into law by the Governor. SB1 calls for a significant overhaul of the state's assessment and accountability system. The new assessment system begins in the spring of 2012. The school years of 2008-2009, 2009-2010 and 2010-2011 are described in SB1 as an interim period. This three-year period allows Kentucky to develop the new assessment system and to carry on state and federal testing requirements.

The Interim Performance Report includes the Kentucky Core Content Test (KCCT) in Reading (grades 3-8 and 10), Mathematics (grades 3-8 and 11), Science (grades 4, 7 and 11), Social Studies (grades 5, 8 and 11) and Writing On-Demand (grades 5, 8 and 12). The KCCT is based on the Kentucky Core Content for Assessment (Version 4.1) and contains multiple choice and open response questions. The Writing On-Demand test uses writing prompts that require students to craft a piece of writing in a 60 minute period.

The KCCT is developed under the direction of content advisory committees of Kentucky educators who draft, review and select test questions. All test items are reviewed by a bias review committee to enhance the fairness of items for all Kentucky students.

The KCCT continues to fulfill the requirements of the federal statute known as the No Child Left Behind Act of 2001. A separate accountability report for No Child Left Behind (NCLB) is published by the Kentucky Department of Education.

The Interim Performance Report focuses entirely on the five state-required content areas and provides data for schools or districts. The data in this report is not used directly for state accountability; although, these results can fulfill the requirements of Senate Bill 168 from 2002 and may be used by schools or districts for their own local accountability needs.

Performance standards are based on descriptions of Novice, Apprentice, Proficient and Distinguished (NAPD) student performance levels specific to the content area and grade being assessed. The performance standards, in conjunction with Kentucky's Core Content for Assessment, should allow instruction to better focus on the content area to be taught and on how well students must demonstrate achievement in each content area.

Reporting Changes for 2009

Based on SB1, Kentucky will not be reporting state accountability and academic indices as in the past. The report does have several familiar pages with performance level (NAPD) trend, core content and disaggregation data per content area. Districts and schools will still see distributions of how students scored in the Novice (with sublevels), Apprentice (with sublevels), Proficient and Distinguished performance levels.

Confidentiality Changes

Due to federal regulations around the Family Education Rights and Privacy Act (FERPA), the numbers of students have been removed. Though there is a need to report as much data as possible, there is also a paramount need to maintain the confidential aspects of individual scores. When scores are reported in what is commonly called "small cells" where very few students may be categorized, there is the possibility of revealing individual scores when numbers are reported. Numbers are reported to each district in a confidential report that accompanies the public Interim Performance Report.

2008-2009

INTERIM PERFORMANCE REPORT

School: Southwestern High School

District: Pulaski County

Code: 501400

Grade: 09-12

CONTENTS OF THIS REPORT

Introduction	1
Academic Trend Data	
Reading Results	2-4
Mathematics Results	5-7
Science Results	8-10
Social Studies Results	11-13
Writing Results	14-16

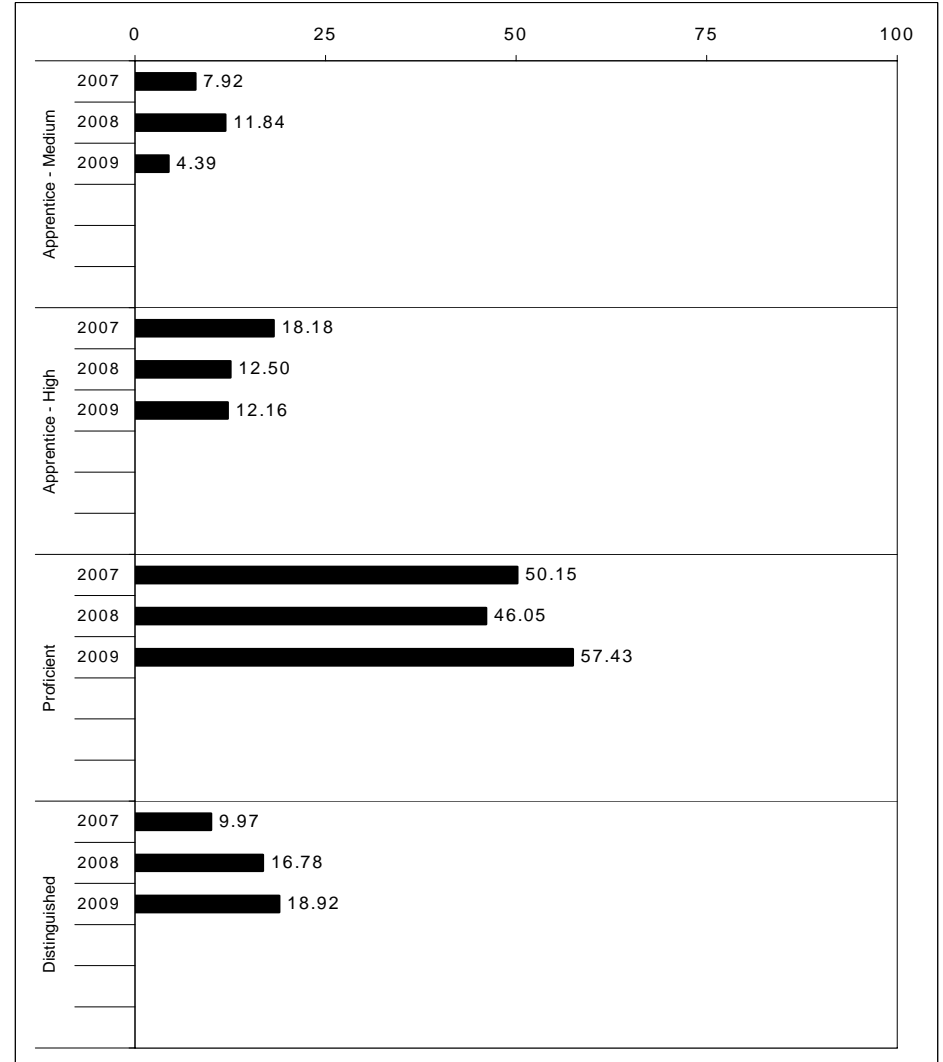
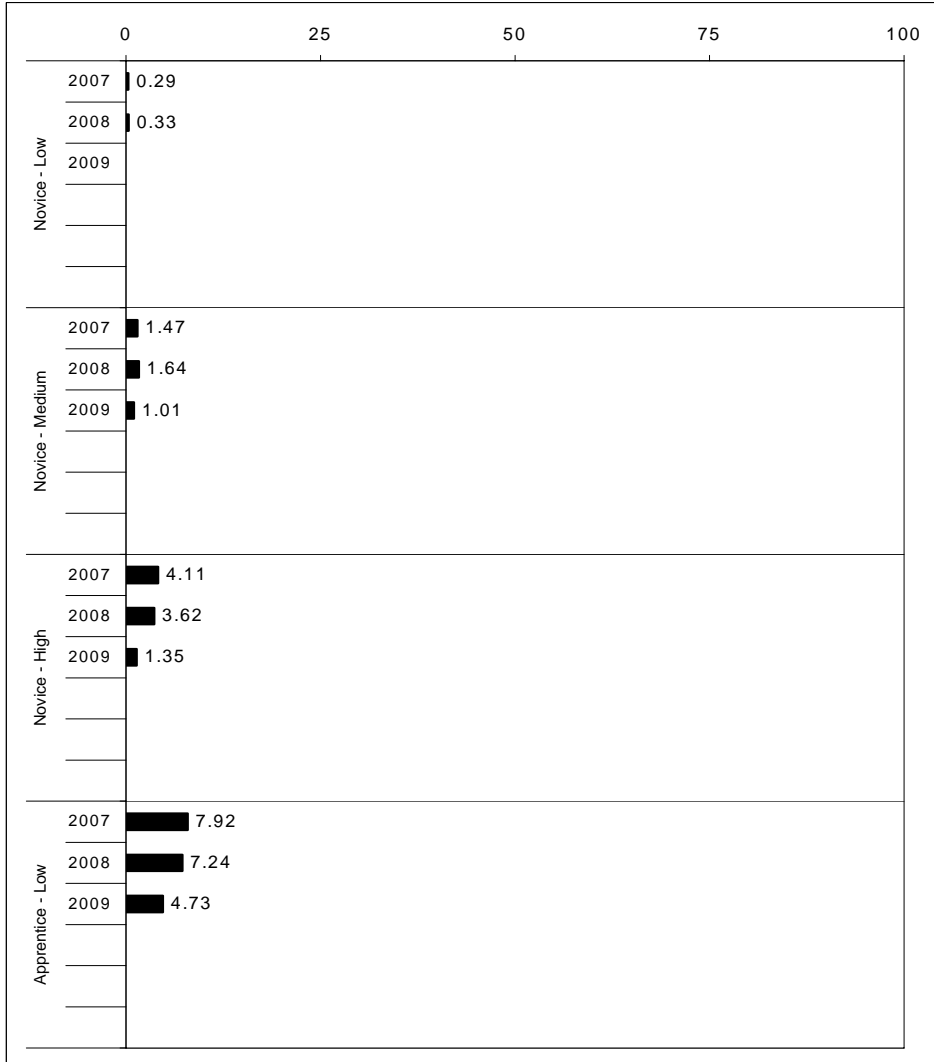
For more information, refer to the 2009 Interim Assessment Interpretative Guide on the Kentucky Department of Education Web site (www.education.ky.gov).





2008-2009
INTERIM PERFORMANCE REPORT
READING TREND DATA
Performance Level Percents

School: Southwestern High School
 District: Pulaski County
 Code: 501400
 Grade: HIGH



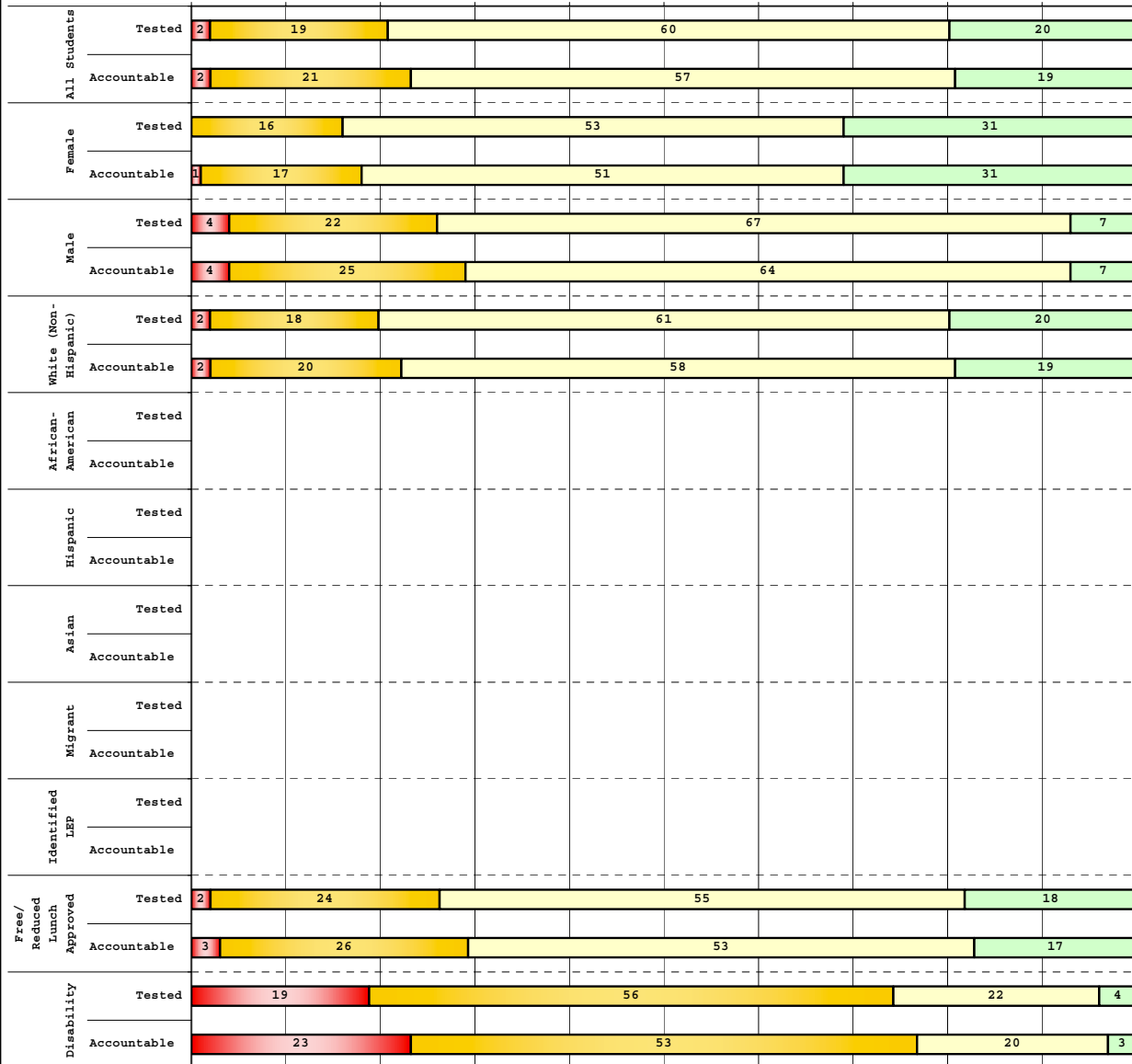
The horizontal bar represents the percent of students scoring at a performance level within a particular year. Percentages may not sum to 100% due to rounding.



**2008-2009
INTERIM PERFORMANCE REPORT
READING DISAGGREGATION
Performance Level Percents**

School: Southwestern High School
District: Pulaski County
Code: 501400
Grade: 10

0% 10% 20% 30% 40% 50% 60% 70% 80% 90% 100%

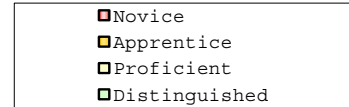


Tested Students

	N%	A%	P%	D%	P+D%
Total	2	19	60	20	79.31
Female	0	16	53	31	84.00
Male	4	22	67	7	74.29
White (Non-Hispanic)	2	18	61	20	80.65
African-American	Unreportable*				
Hispanic	Unreportable*				
Asian	Unreportable*				
Other					
Title I					
Migrant	Unreportable*				
Identified LEP	Unreportable*				
Extended Sch Services					
Gifted/Talented	0	1	60	39	98.86
F/R Lunch Approved	2	24	55	18	73.30
Vocational/2 Credits	2	16	66	15	81.82
Disability	19	56	22	4	25.93
Alternate Assessment	Unreportable*				

NCLB Accountable Students

	N%	A%	P%	D%	P+D%
Total	2	21	57	19	76.35
Female	1	17	51	31	82.00
Male	4	25	64	7	70.55
White (Non-Hispanic)	2	20	58	19	77.54
African-American	Unreportable*				
Hispanic	Unreportable*				
Asian	Unreportable*				
Other					
Title I					
Migrant	Unreportable*				
Identified LEP	Unreportable*				
Extended Sch Services					
Gifted/Talented	0	1	60	39	98.86
F/R Lunch Approved	3	26	53	17	70.49
Vocational/2 Credits	2	16	66	15	81.69
Disability	23	53	20	3	23.33
Alternate Assessment	Unreportable*				



Percentage may not sum to 100% due to rounding. 'Unreportable*' indicates subpopulations with fewer than 10 students or subpopulations where all students score at the same performance level.



2008-2009
INTERIM PERFORMANCE REPORT
READING CORE CONTENT

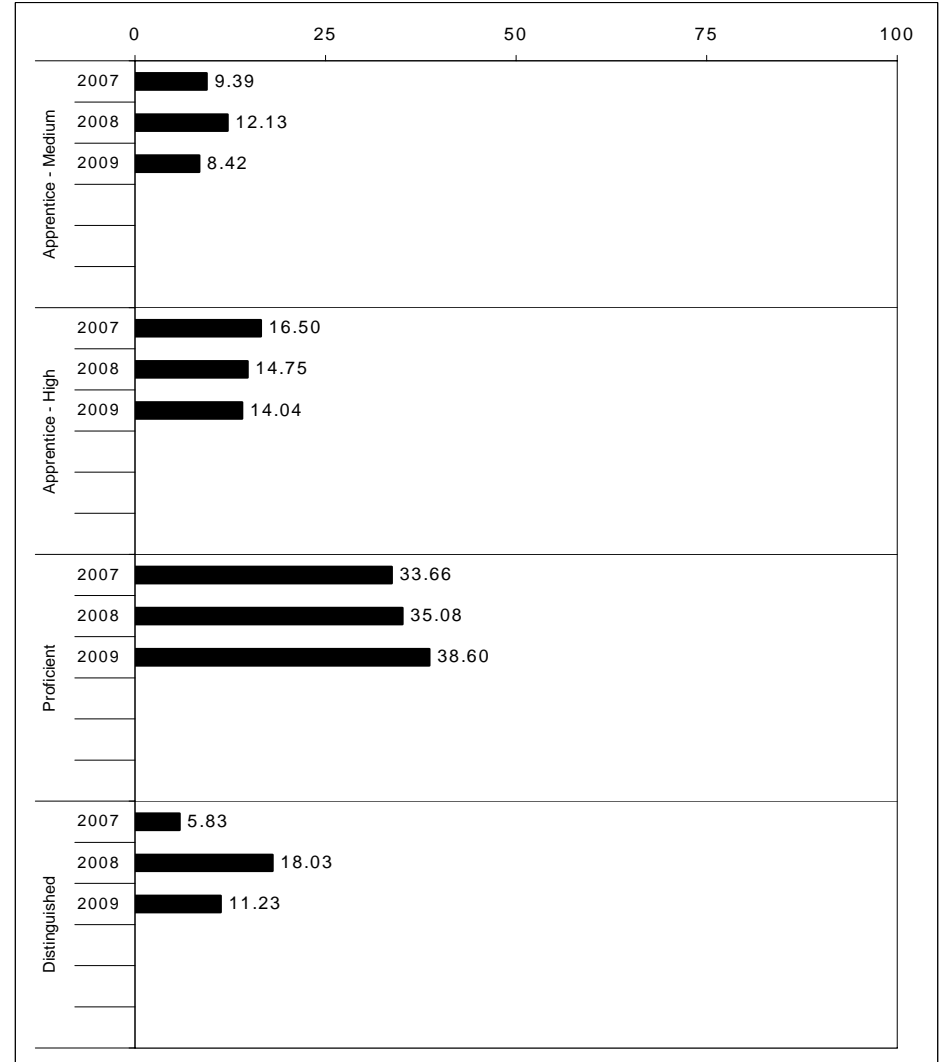
School: Southwestern High School
 District: Pulaski County
 Code: 501400
 Grade: 10

	No. Items	No. Observations	SCHOOL								Std. Err.	No. Observations	STATE								School -State Mean
			B	0	1	2	3	4	Mean	B			0	1	2	3	4	Mean			
OPEN RESPONSE																					
2.0.x - Developing Understanding	2	339	0	1	6	37	36	20	2.7	0.0	56,492	0	1	13	48	28	10	2.3	0.4		
3.0.x - Interpreting Text	4	435	0	1	8	33	36	23	2.7	0.0	72,472	1	3	13	44	29	11	2.3	0.4		
5.0.x - Critical Stance	2	111	1	4	17	32	34	12	2.3	0.1	16,533	1	6	17	43	25	9	2.1	0.2		
MULTIPLE CHOICE																					
1.0.x - Forming a Foundation	21	1,504	82	18	0				0.82	0.01	249,926	79	21	0				0.79	0.03		
2.0.x - Developing Understanding	78	5,393	79	21	0				0.79	0.01	875,285	75	25	0				0.75	0.04		
3.0.x - Interpreting Text	18	1,094	80	20	0				0.80	0.01	184,813	74	26	0				0.74	0.06		
5.0.x - Critical Stance	28	2,332	74	26	0				0.74	0.01	387,431	71	29	0				0.71	0.03		



2008-2009
INTERIM PERFORMANCE REPORT
MATHEMATICS TREND DATA
Performance Level Percents

School: Southwestern High School
 District: Pulaski County
 Code: 501400
 Grade: HIGH



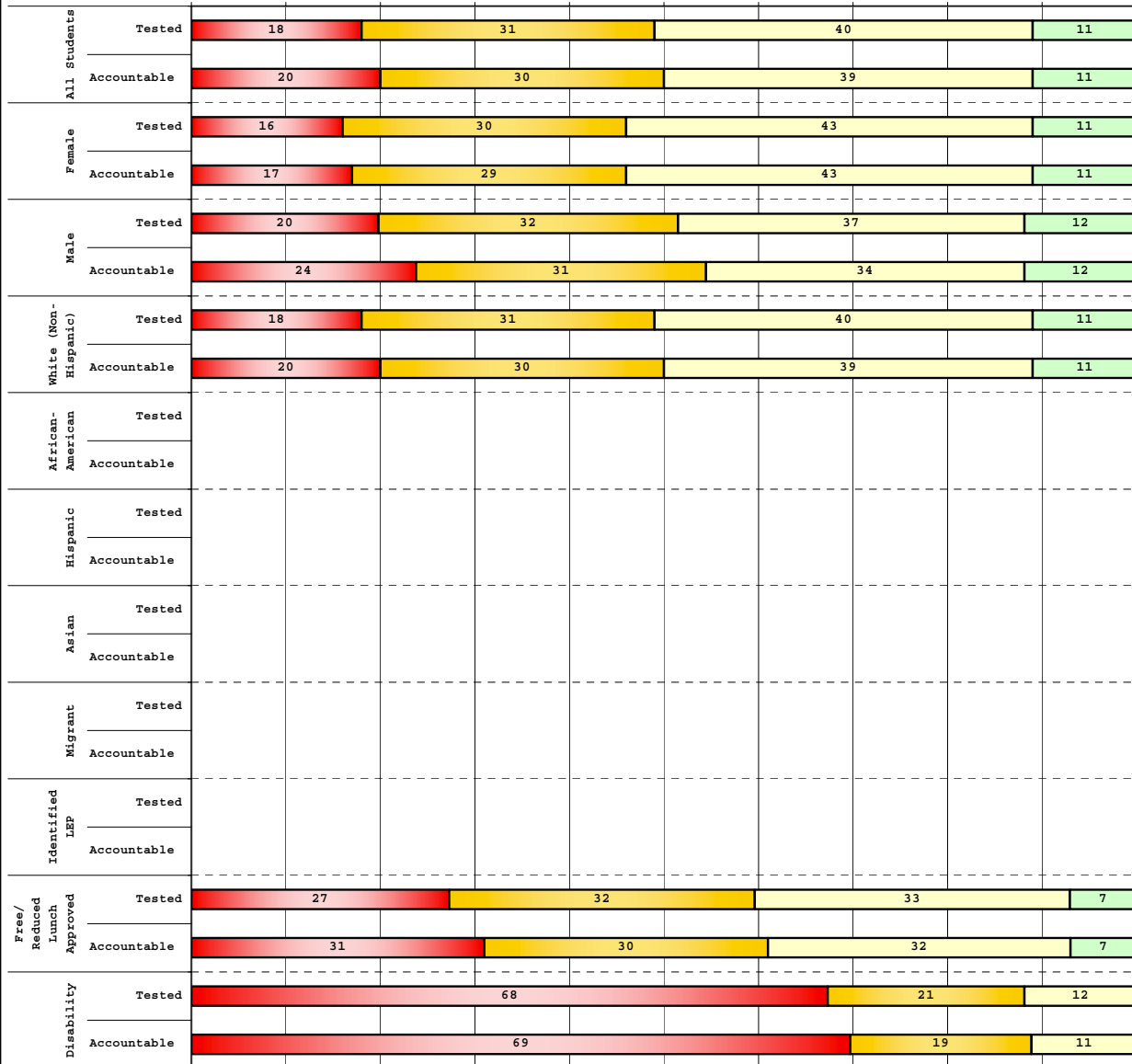
The horizontal bar represents the percent of students scoring at a performance level within a particular year. Percentages may not sum to 100% due to rounding.



**2008-2009
INTERIM PERFORMANCE REPORT
MATHEMATICS DISAGGREGATION
Performance Level Percents**

School: Southwestern High School
District: Pulaski County
Code: 501400
Grade: 11

0% 10% 20% 30% 40% 50% 60% 70% 80% 90% 100%



Tested Students

	N%	A%	P%	D%	P+D%
Total	18	31	40	11	51.43
Female	16	30	43	11	54.35
Male	20	32	37	12	48.59
White (Non-Hispanic)	18	31	40	11	51.84
African-American	Unreportable*				
Hispanic	Unreportable*				
Asian	Unreportable*				
Other	Unreportable*				
Title I					
Migrant	Unreportable*				
Identified LEP					
Extended Sch Services					
Gifted/Talented	2	14	52	31	83.33
F/R Lunch Approved	27	32	33	7	40.29
Vocational/2 Credits	21	35	37	8	44.37
Disability	68	21	12	0	11.76
Alternate Assessment	Unreportable*				

NCLB Accountable Students

	N%	A%	P%	D%	P+D%
Total	20	30	39	11	49.82
Female	17	29	43	11	53.90
Male	24	31	34	12	45.83
White (Non-Hispanic)	20	30	39	11	50.18
African-American	Unreportable*				
Hispanic	Unreportable*				
Asian	Unreportable*				
Other	Unreportable*				
Title I					
Migrant	Unreportable*				
Identified LEP					
Extended Sch Services					
Gifted/Talented	2	14	52	31	83.13
F/R Lunch Approved	31	30	32	7	38.62
Vocational/2 Credits	21	35	37	8	44.37
Disability	69	19	11	0	11.11
Alternate Assessment	Unreportable*				

■ Novice
■ Apprentice
■ Proficient
■ Distinguished

Percentage may not sum to 100% due to rounding. 'Unreportable*' indicates subpopulations with fewer than 10 students or subpopulations where all students score at the same performance level.



2008-2009
INTERIM PERFORMANCE REPORT
MATHEMATICS CORE CONTENT

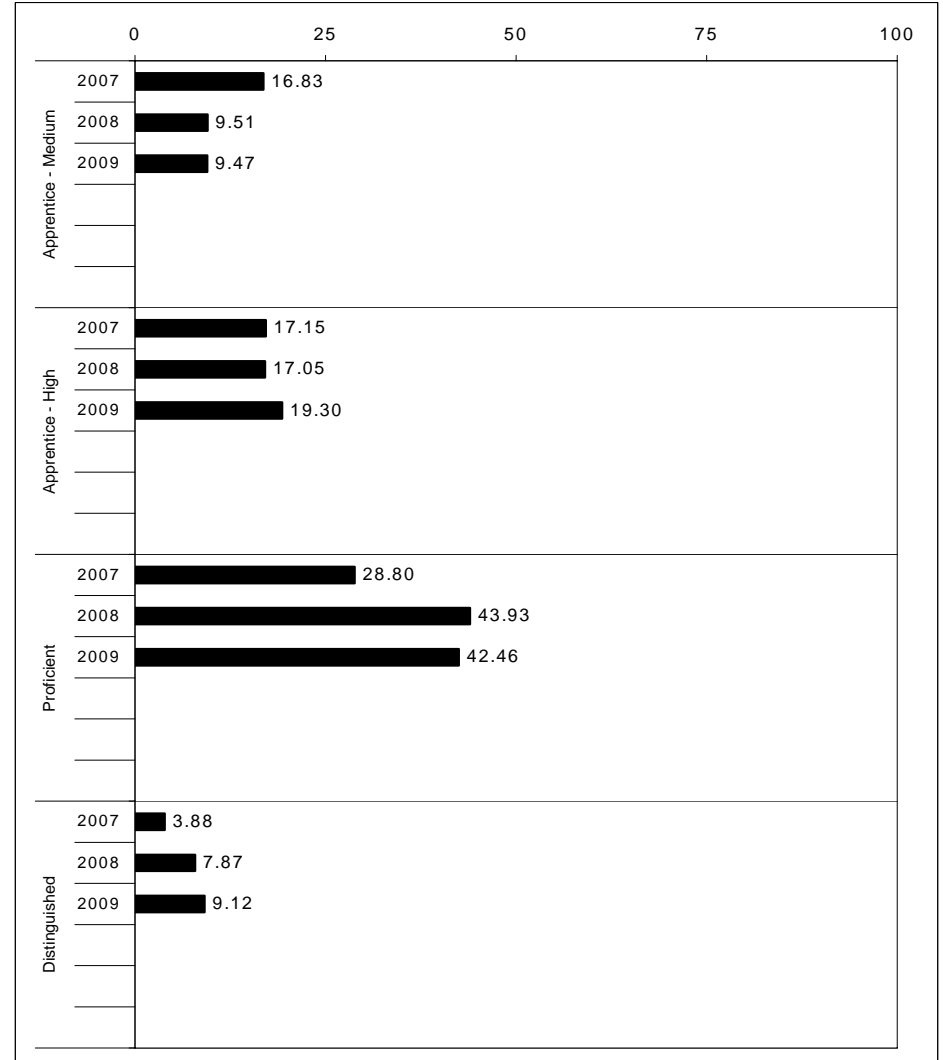
School: Southwestern High School
 District: Pulaski County
 Code: 501400
 Grade: 11

	No. Items	No. Observations	SCHOOL								STATE								School -State Mean
			Percents						Mean	Std. Err.	Percents						Mean		
			B	0	1	2	3	4					No. Observations	B	0	1		2	3
OPEN RESPONSE																			
1.x.x - Number Prop Oper	3	364	1	31	41	15	7	5	1.1	0.1	58,157	1	35	40	14	5	4	1.0	0.1
2.x.x - Measurement	1	56	2	45	4	30	7	13	1.4	0.2	7,732	2	41	8	27	11	10	1.4	0.0
3.x.x - Geometry	2	87	1	23	46	15	11	3	1.2	0.1	14,423	1	32	41	12	8	6	1.1	0.1
4.x.x - Data Analysis & Probabilit	1	278	1	9	43	21	25	1	1.6	0.1	43,744	1	11	58	16	11	4	1.4	0.2
5.x.x - Algebraic Thinking	4	648	2	20	30	25	10	13	1.6	0.1	101,871	1	26	31	22	9	11	1.5	0.1
MULTIPLE CHOICE																			
1.x.x - Number Prop Oper	15	1,844	Correct	Incorrect	Omit/Mult				0.68	0.01	291,257	Correct	Incorrect	Omit/Mult				0.65	0.03
2.x.x - Measurement	8	1,078	68	32	0				0.49	0.02	168,327	47	52	0				0.47	0.02
3.x.x - Geometry	13	1,747	49	51	0				0.56	0.01	276,322	54	46	0				0.54	0.02
4.x.x - Data Analysis & Probabilit	11	1,212	56	44	0				0.62	0.01	189,924	58	42	0				0.58	0.04
5.x.x - Algebraic Thinking	28	3,170	62	38	0				0.59	0.01	496,648	53	47	0				0.53	0.06



2008-2009
INTERIM PERFORMANCE REPORT
SCIENCE TREND DATA
Performance Level Percents

School: Southwestern High School
 District: Pulaski County
 Code: 501400
 Grade: 11

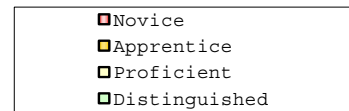
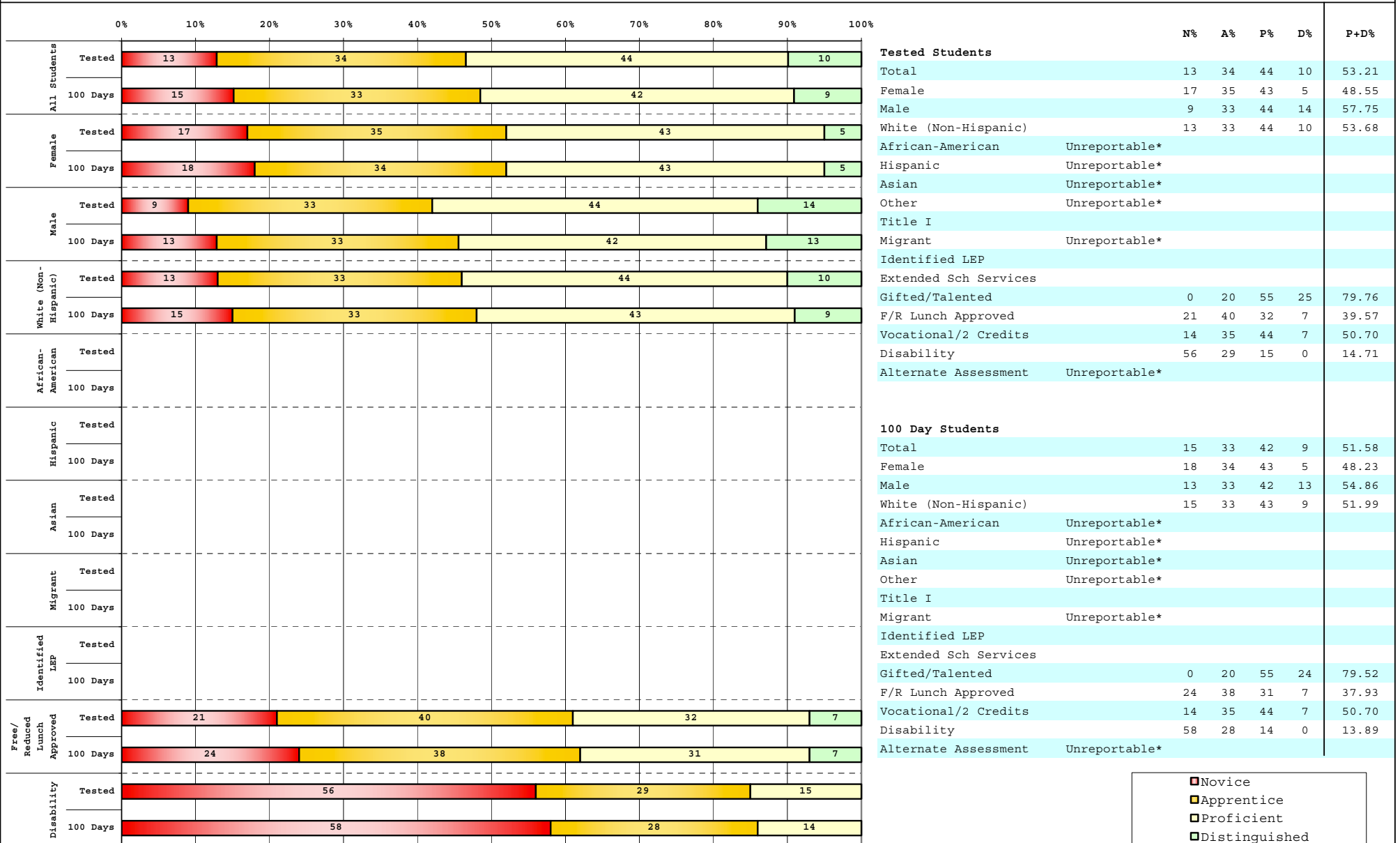


The horizontal bar represents the percent of students scoring at a performance level within a particular year. Percentages may not sum to 100% due to rounding.



**2008-2009
INTERIM PERFORMANCE REPORT
SCIENCE DISAGGREGATION
Performance Level Percents**

School: Southwestern High School
District: Pulaski County
Code: 501400
Grade: 11



Percentage may not sum to 100% due to rounding. 'Unreportable*' indicates subpopulations with fewer than 10 students or subpopulations where all students score at the same performance level.



2008-2009
INTERIM PERFORMANCE REPORT
SCIENCE CORE CONTENT

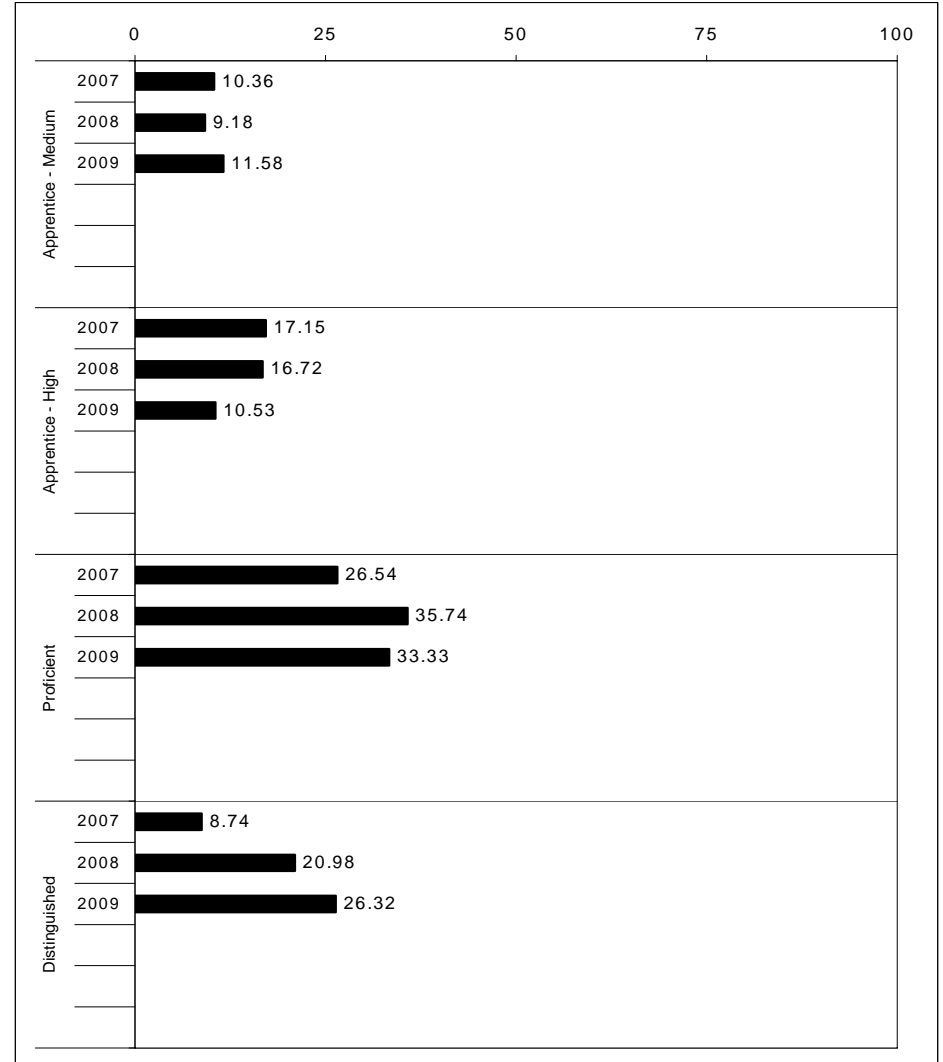
School: Southwestern High School
 District: Pulaski County
 Code: 501400
 Grade: 11

	No. Items	No. Observations	SCHOOL								Std. Err.	No. Observations	STATE								School -State Mean
			B	0	1	2	3	4	Mean	B			0	1	2	3	4	Mean			
OPEN RESPONSE																					
1.x.x - Physical Science	2	87	1	14	15	45	13	13	1.9	0.1	14,423	1	16	32	31	12	8	1.6	0.3		
2.x.x - Earth Space Science	2	323	1	8	15	28	34	14	2.3	0.1	50,954	1	14	20	32	26	8	1.9	0.4		
3.x.x - Biological Science	3	368	1	31	32	21	10	5	1.2	0.1	58,124	2	38	31	18	7	3	1.0	0.2		
4.x.x - Unifying Concepts	3	379	2	10	49	25	10	5	1.5	0.0	58,685	1	11	52	23	10	3	1.4	0.1		
MULTIPLE CHOICE																					
1.x.x - Physical Science	14	1,802	63	38	0				0.62	0.01	284,043	57	42	0				0.57	0.05		
2.x.x - Earth Space Science	14	1,812	62	38	0				0.62	0.01	284,629	56	43	0				0.56	0.06		
3.x.x - Biological Science	18	2,224	48	52	0				0.48	0.01	349,952	46	53	0				0.46	0.02		
4.x.x - Unifying Concepts	26	3,058	56	44	0				0.56	0.01	481,184	53	47	0				0.53	0.03		



2008-2009
INTERIM PERFORMANCE REPORT
SOCIAL STUDIES TREND DATA
Performance Level Percents

School: Southwestern High School
 District: Pulaski County
 Code: 501400
 Grade: 11

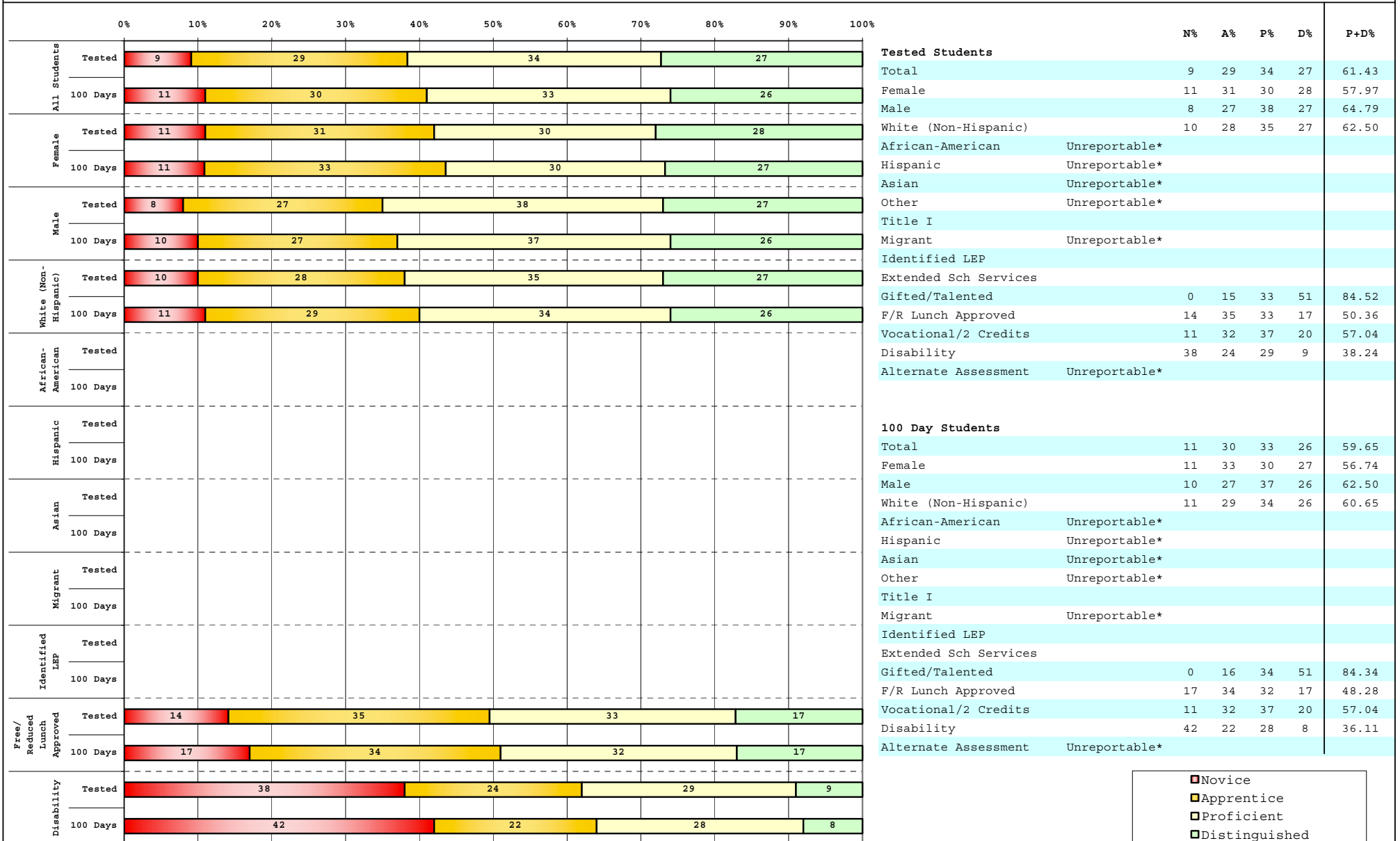


The horizontal bar represents the percent of students scoring at a performance level within a particular year. Percentages may not sum to 100% due to rounding.



2008-2009
INTERIM PERFORMANCE REPORT
SOCIAL STUDIES DISAGGREGATION
Performance Level Percents

School: Southwestern High School
 District: Pulaski County
 Code: 501400
 Grade: 11



■	Novice
■	Apprentice
■	Proficient
■	Distinguished

Percentage may not sum to 100% due to rounding. 'Unreportable*' indicates subpopulations with fewer than 10 students or subpopulations where all students score at the same performance level.



2008-2009
INTERIM PERFORMANCE REPORT
SOCIAL STUDIES CORE CONTENT

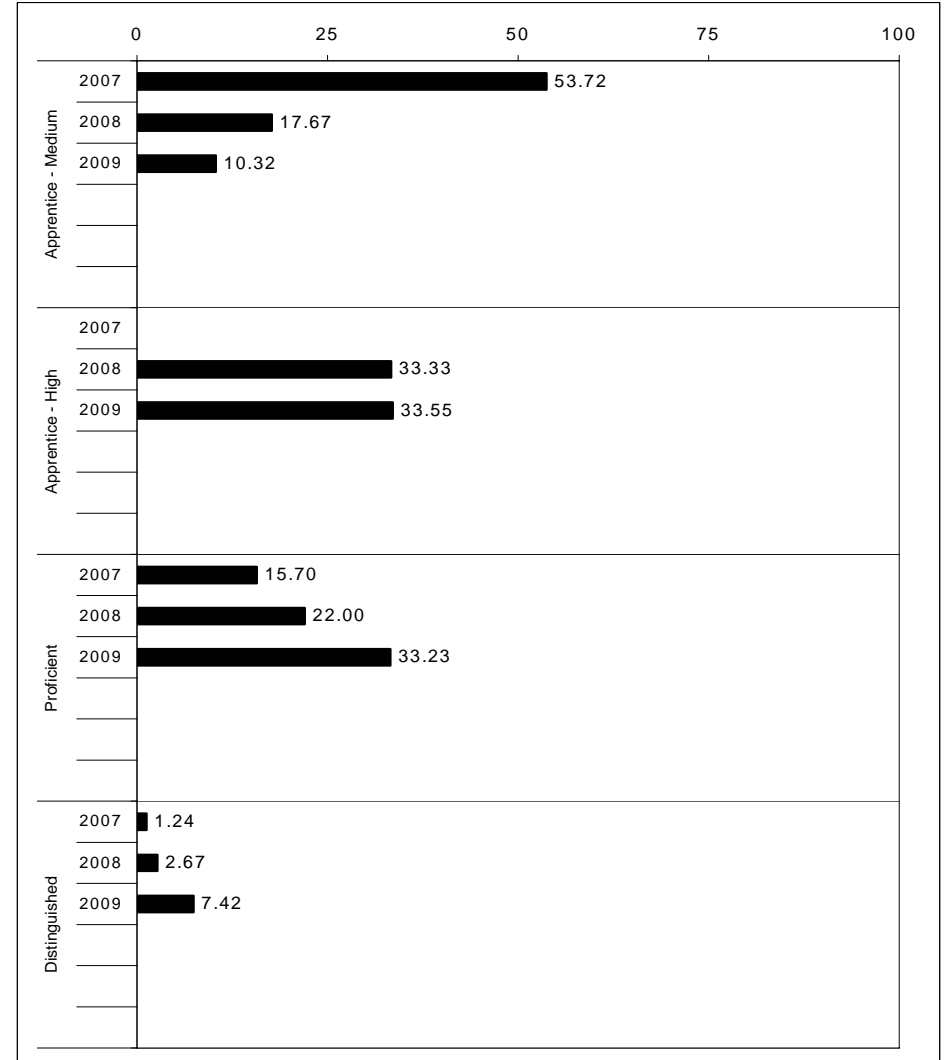
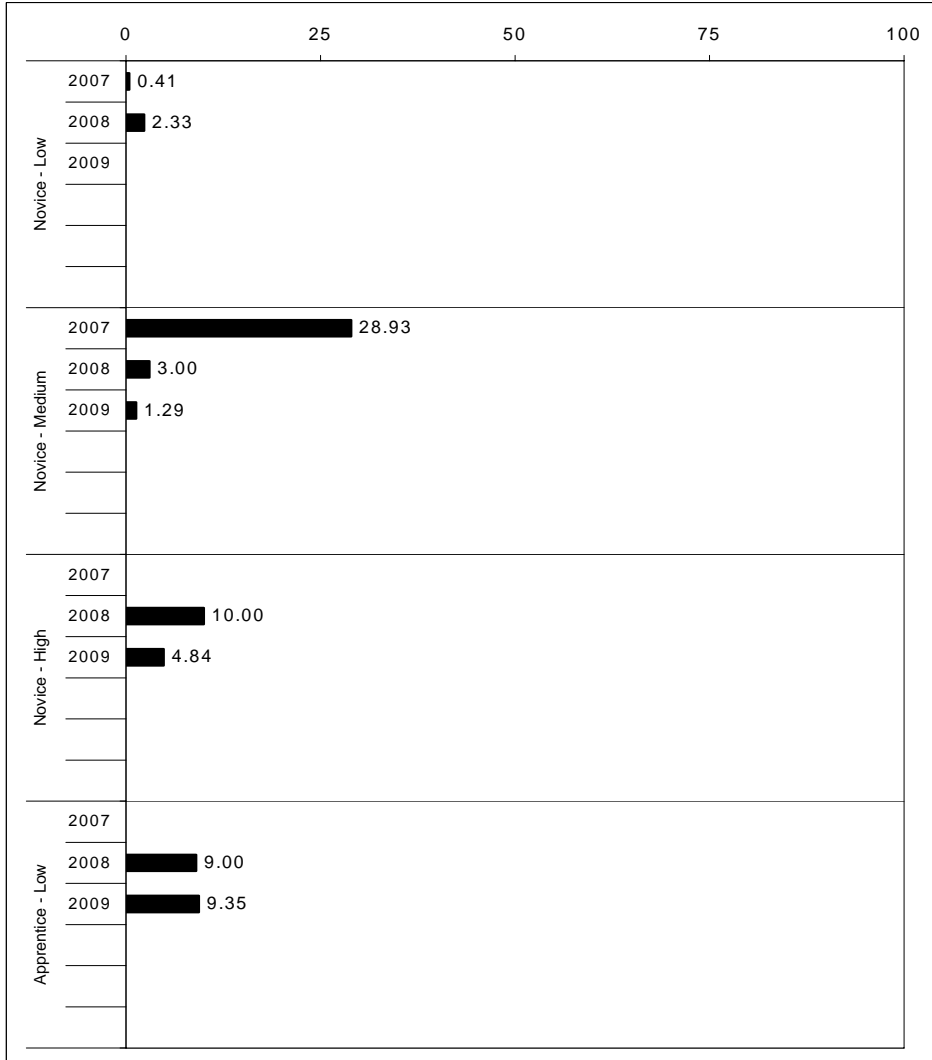
School: Southwestern High School
 District: Pulaski County
 Code: 501400
 Grade: 11

	No. Items	No. Observations	SCHOOL								Std. Err.	No. Observations	STATE								School -State Mean
			B	0	1	2	3	4	Mean	B			0	1	2	3	4	Mean			
OPEN RESPONSE																					
1.x.x - Government & Civics	2	334	1	7	19	40	24	9	2.1	0.1	51,476	1	11	24	40	18	5	1.8	0.3		
2.x.x - Cultures & Societies	2	322	2	16	16	37	21	9	1.9	0.1	50,960	2	18	25	35	16	5	1.6	0.3		
3.x.x - Economics	1	45	4	18	20	24	27	7	1.8	0.2	7,210	1	23	26	28	16	6	1.5	0.3		
4.x.x - Geography	1	43	0	9	26	28	33	5	2.0	0.2	7,206	2	16	33	31	14	3	1.5	0.5		
5.x.x - Historical Perspective	5	702	1	11	22	39	18	8	1.9	0.0	109,600	2	14	30	37	13	4	1.6	0.3		
MULTIPLE CHOICE																					
1.x.x - Government & Civics	16	1,901	62	38	0				0.62	0.01	298,998	56	44	1				0.56	0.06		
2.x.x - Cultures & Societies	7	790	63	37	0				0.63	0.02	124,016	62	37	0				0.62	0.01		
3.x.x - Economics	12	1,711	75	25	0				0.75	0.01	269,670	65	34	1				0.65	0.10		
4.x.x - Geography	11	1,434	72	28	0				0.72	0.01	225,936	62	38	0				0.62	0.10		
5.x.x - Historical Perspective	39	4,823	69	31	0				0.69	0.01	757,994	61	38	0				0.61	0.08		



2008-2009
INTERIM PERFORMANCE REPORT
WRITING ON-DEMAND TREND DATA
Performance Level Percents

School: Southwestern High School
 District: Pulaski County
 Code: 501400
 Grade: 12

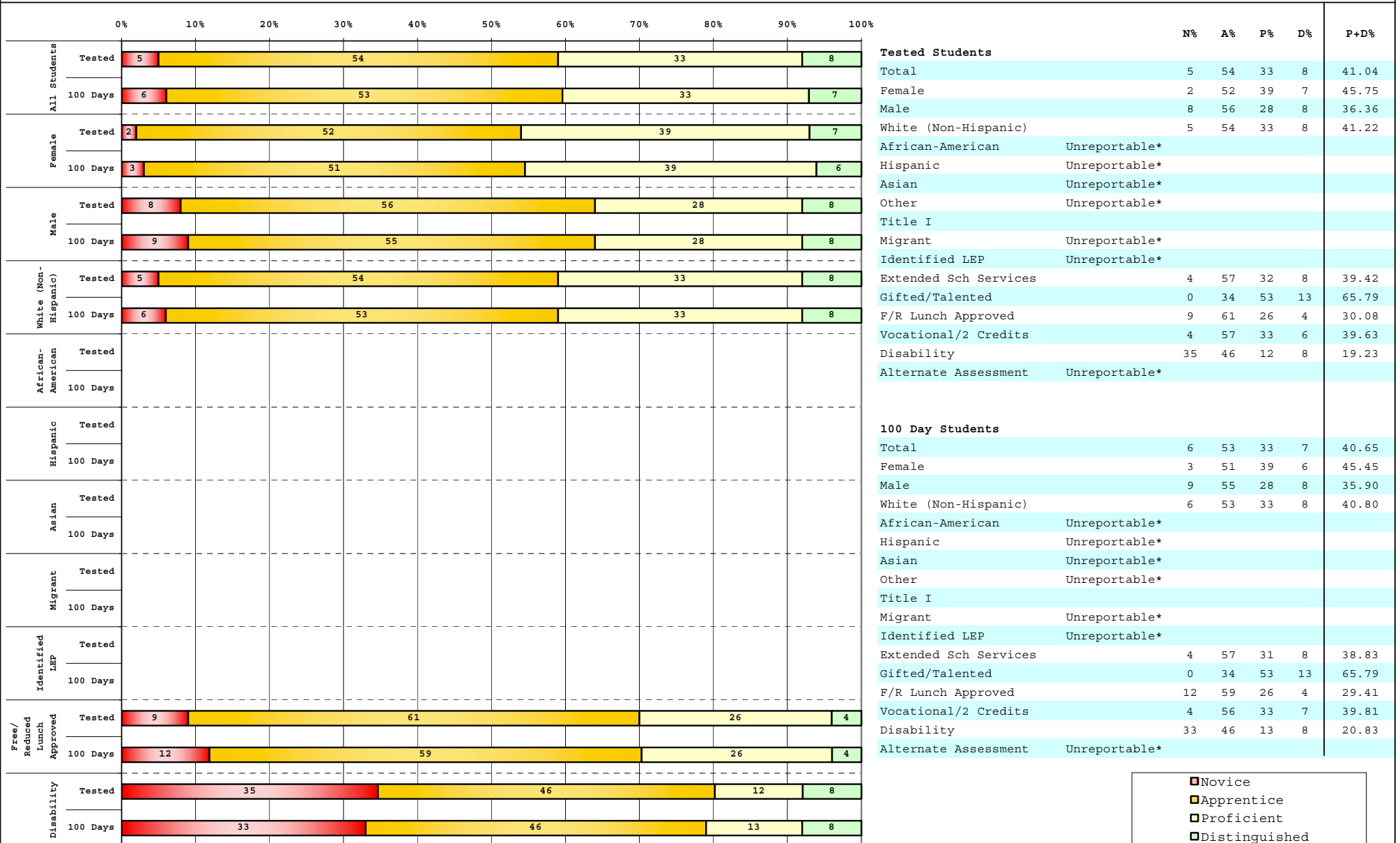


The horizontal bar represents the percent of students scoring at a performance level within a particular year. Percentages may not sum to 100% due to rounding.



2008-2009
INTERIM PERFORMANCE REPORT
WRITING ON-DEMAND DISAGGREGATION
Performance Level Percents

School: Southwestern High School
 District: Pulaski County
 Code: 501400
 Grade: 12



■	Novice
■	Apprentice
■	Proficient
■	Distinguished

Percentage may not sum to 100% due to rounding. 'Unreportable*' indicates subpopulations with fewer than 10 students or subpopulations where all students score at the same performance level.



2008-2009
INTERIM PERFORMANCE REPORT
WRITING ON-DEMAND CORE CONTENT

School: Southwestern High School
 District: Pulaski County
 Code: 501400
 Grade: 12

WRITING PROMPT	SCHOOL												STATE												School
	No. Observations	Percents											Mean	Percents											Mean
	B	0	1	2	3	4	5	6	7	8		B	0	1	2	3	4	5	6	7	8				
Inform																									
1.X.X - Content	107	0	7	0	5	9	46	17	10	4	2	4.07	0	1	2	10	13	35	17	16	4	2	4.23	-0.16	
2.X.X - Structure	107	0	4	2	10	11	43	16	10	3	1	3.96	0	2	3	10	14	34	17	14	4	2	4.07	-0.11	
3.X.X - Convention	107	0	1	0	12	11	40	20	10	5	1	4.19	0	0	0	14	14	36	17	14	4	2	4.20	-0.01	
Narrate for a purpose																									
1.X.X - Content	54	0	0	0	9	2	30	19	26	11	4	4.98	0	1	2	9	12	35	17	18	5	2	4.34	0.64	
2.X.X - Structure	54	0	0	0	9	6	31	19	26	4	6	4.80	0	2	3	10	13	34	17	16	4	2	4.17	0.63	
3.X.X - Convention	54	0	0	0	7	6	37	17	22	7	4	4.78	0	0	0	12	13	35	17	16	4	2	4.30	0.48	
Persuade																									
1.X.X - Content	449	0	1	0	7	11	35	19	18	5	2	4.47	0	1	2	10	12	36	17	16	4	2	4.27	0.20	
2.X.X - Structure	449	0	1	2	8	11	37	18	17	4	1	4.35	0	2	3	10	13	36	17	14	3	2	4.11	0.24	
3.X.X - Convention	449	0	0	0	10	11	37	18	17	4	2	4.39	0	0	0	12	13	38	18	14	4	2	4.25	0.14	