



### Interim Performance Report

In March 2009, the Kentucky General Assembly passed Senate Bill 1 (SB1) that was subsequently signed into law by the Governor. SB1 calls for a significant overhaul of the state's assessment and accountability system. The new assessment system begins in the spring of 2012. The school years of 2008-2009, 2009-2010 and 2010-2011 are described in SB1 as an interim period. This three-year period allows Kentucky to develop the new assessment system and to carry on state and federal testing requirements.

The Interim Performance Report includes the Kentucky Core Content Test (KCCT) in Reading (grades 3-8 and 10), Mathematics (grades 3-8 and 11), Science (grades 4, 7 and 11), Social Studies (grades 5, 8 and 11) and Writing On-Demand (grades 5, 8 and 12). The KCCT is based on the Kentucky Core Content for Assessment (Version 4.1) and contains multiple choice and open response questions. The Writing On-Demand test uses writing prompts that require students to craft a piece of writing in a 60 minute period.

The KCCT is developed under the direction of content advisory committees of Kentucky educators who draft, review and select test questions. All test items are reviewed by a bias review committee to enhance the fairness of items for all Kentucky students.

The KCCT continues to fulfill the requirements of the federal statute known as the No Child Left Behind Act of 2001. A separate accountability report for No Child Left Behind (NCLB) is published by the Kentucky Department of Education.

The Interim Performance Report focuses entirely on the five state-required content areas and provides data for schools or districts. The data in this report is not used directly for state accountability; although, these results can fulfill the requirements of Senate Bill 168 from 2002 and may be used by schools or districts for their own local accountability needs.

Performance standards are based on descriptions of Novice, Apprentice, Proficient and Distinguished (NAPD) student performance levels specific to the content area and grade being assessed. The performance standards, in conjunction with Kentucky's Core Content for Assessment, should allow instruction to better focus on the content area to be taught and on how well students must demonstrate achievement in each content area.

#### Reporting Changes for 2009

Based on SB1, Kentucky will not be reporting state accountability and academic indices as in the past. The report does have several familiar pages with performance level (NAPD) trend, core content and disaggregation data per content area. Districts and schools will still see distributions of how students scored in the Novice (with sublevels), Apprentice (with sublevels), Proficient and Distinguished performance levels.

#### Confidentiality Changes

Due to federal regulations around the Family Education Rights and Privacy Act (FERPA), the numbers of students have been removed. Though there is a need to report as much data as possible, there is also a paramount need to maintain the confidential aspects of individual scores. When scores are reported in what is commonly called "small cells" where very few students may be categorized, there is the possibility of revealing individual scores when numbers are reported. Numbers are reported to each district in a confidential report that accompanies the public Interim Performance Report.

2008-2009

## INTERIM PERFORMANCE REPORT

School: Oak Hill Elementary School

District: Pulaski County

Code: 501420

Grade: PRIMARY-05

### CONTENTS OF THIS REPORT

Introduction	1
Academic Trend Data	
Reading Results	2-8
Mathematics Results	9-15
Science Results	16-18
Social Studies Results	19-21
Writing Results	22-24

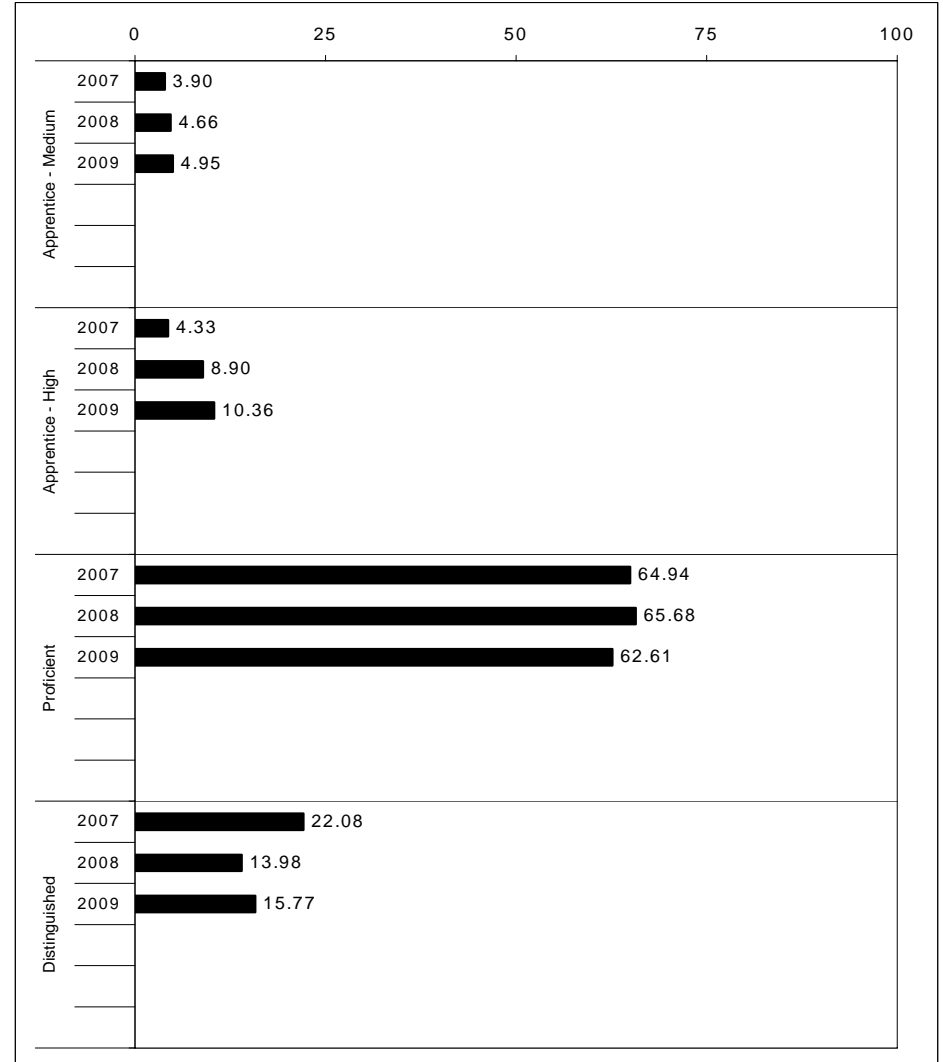
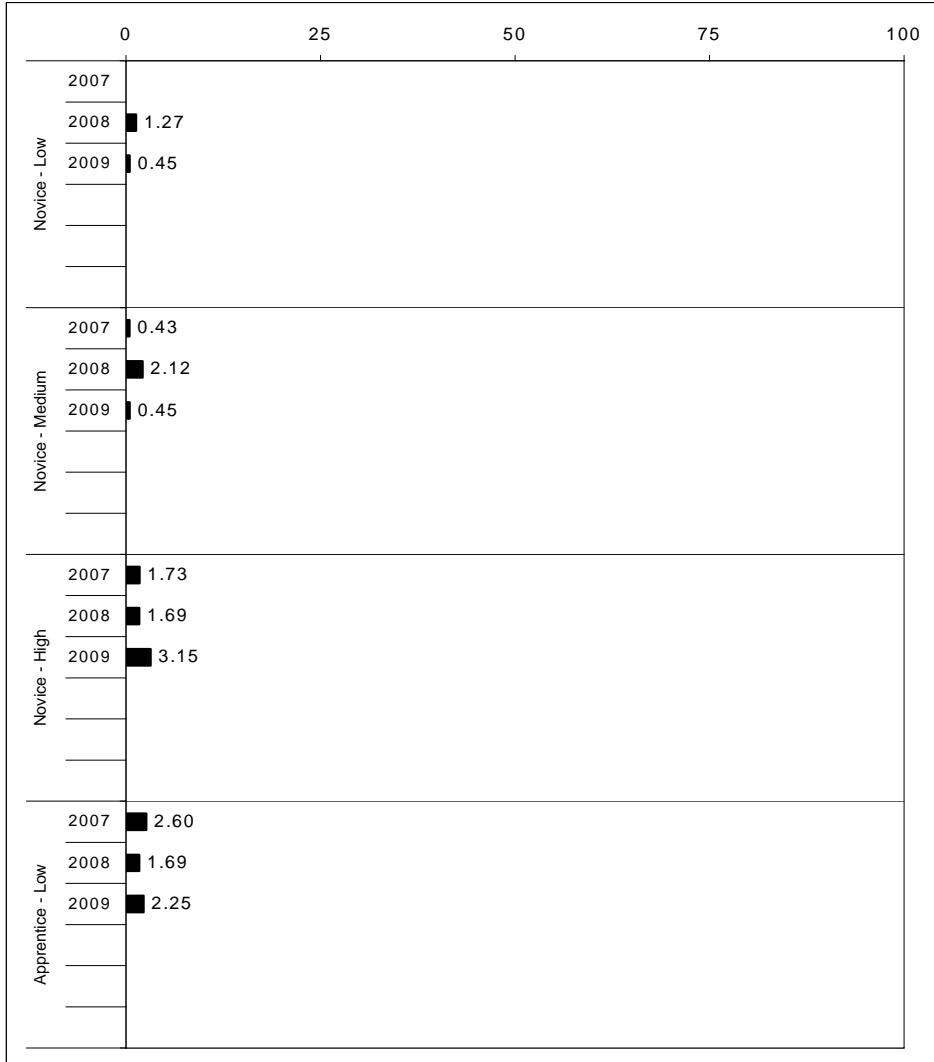
For more information, refer to the 2009 Interim Assessment Interpretative Guide on the Kentucky Department of Education Web site ([www.education.ky.gov](http://www.education.ky.gov)).





2008-2009  
**INTERIM PERFORMANCE REPORT**  
**READING TREND DATA**  
**Performance Level Percents**

School: Oak Hill Elementary School  
 District: Pulaski County  
 Code: 501420  
 Grade: ELEMENTARY



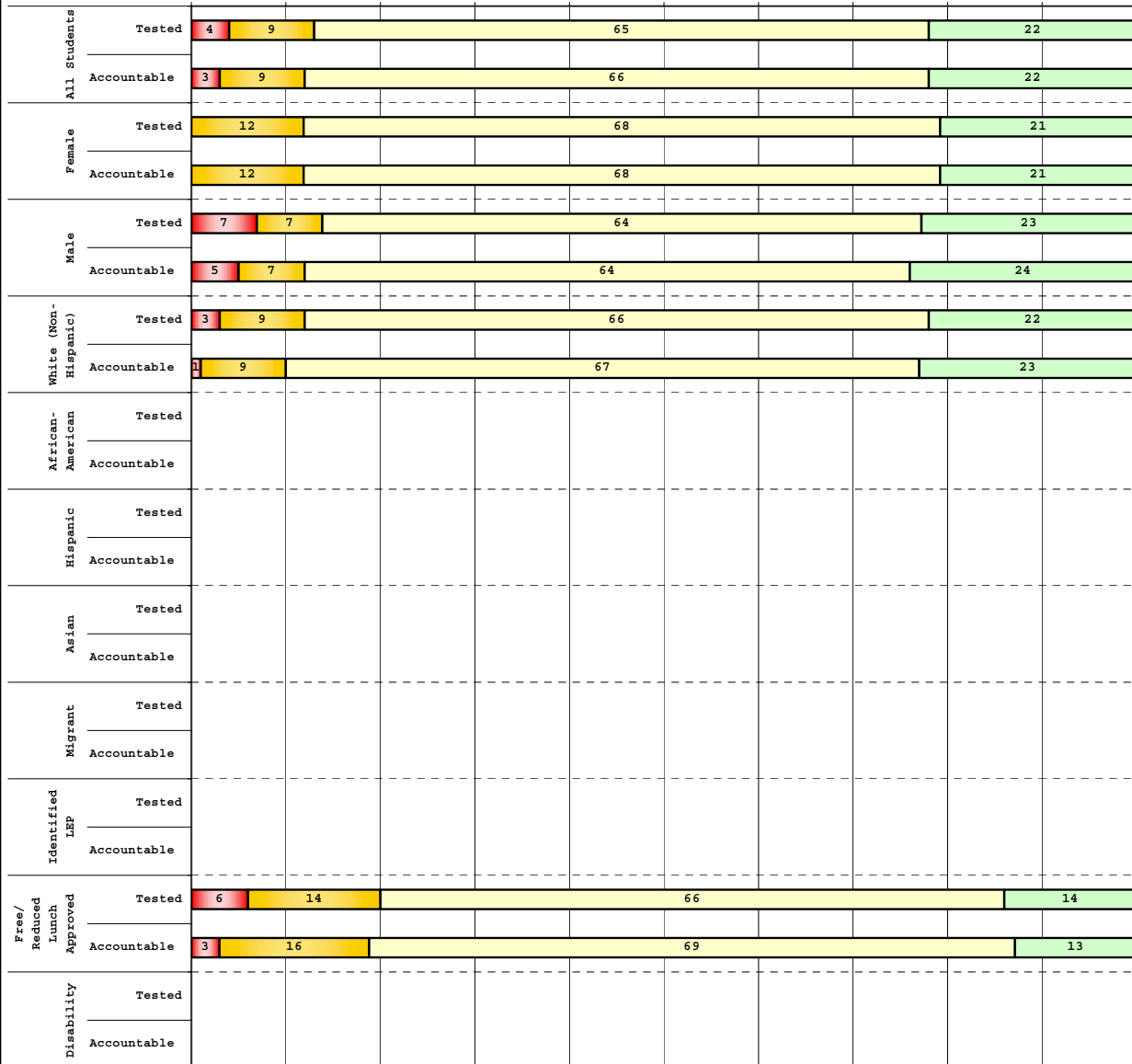
The horizontal bar represents the percent of students scoring at a performance level within a particular year. Percentages may not sum to 100% due to rounding.



**2008-2009  
INTERIM PERFORMANCE REPORT  
READING DISAGGREGATION  
Performance Level Percents**

School: Oak Hill Elementary School  
District: Pulaski County  
Code: 501420  
Grade: 03

0% 10% 20% 30% 40% 50% 60% 70% 80% 90% 100%



Category	N%	A%	P%	D%	P+D%
<b>Tested Students</b>					
Total	4	9	65	22	87.18
Female	0	12	68	21	88.24
Male	7	7	64	23	86.36
White (Non-Hispanic)	3	9	66	22	88.31
African-American					
Hispanic					
Asian					
Other	Unreportable*				
Title I	4	9	65	22	87.18
Migrant	Unreportable*				
Identified LEP					
Extended Sch Services	Unreportable*				
Gifted/Talented	0	0	53	47	100.00
F/R Lunch Approved	6	14	66	14	80.00
Vocational/2 Credits					
Disability	Unreportable*				
Alternate Assessment					
<b>NCLB Accountable Students</b>					
Total	3	9	66	22	88.16
Female	0	12	68	21	88.24
Male	5	7	64	24	88.10
White (Non-Hispanic)	1	9	67	23	89.33
African-American					
Hispanic					
Asian					
Other	Unreportable*				
Title I	3	9	66	22	88.16
Migrant	Unreportable*				
Identified LEP					
Extended Sch Services	Unreportable*				
Gifted/Talented	0	0	53	47	100.00
F/R Lunch Approved	3	16	69	13	81.25
Vocational/2 Credits					
Disability	Unreportable*				
Alternate Assessment					

<span style="color:red">■</span> Novice
<span style="color:orange">■</span> Apprentice
<span style="color:green">■</span> Proficient
<span style="color:blue">■</span> Distinguished

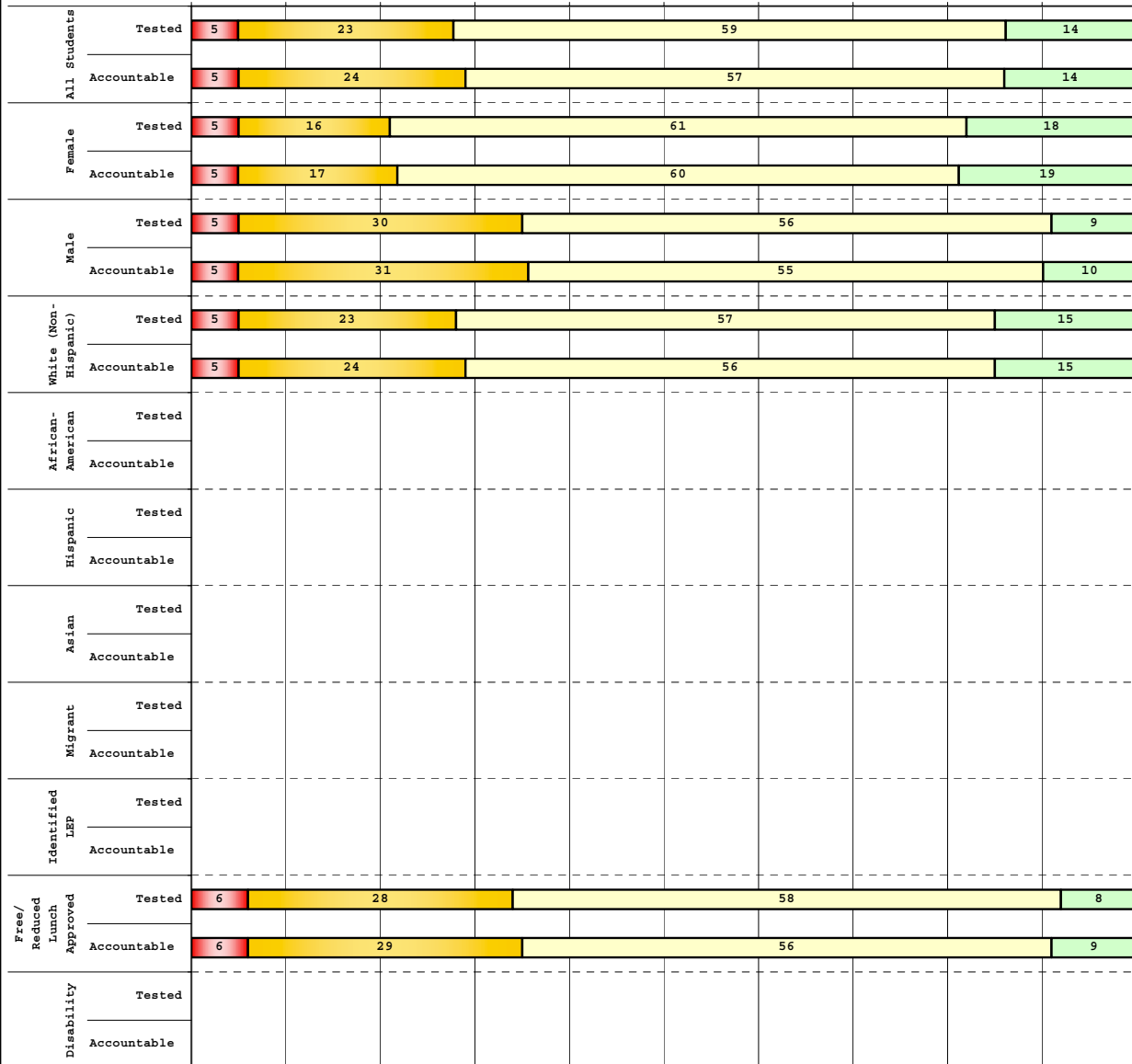
Percentage may not sum to 100% due to rounding. 'Unreportable\*' indicates subpopulations with fewer than 10 students or subpopulations where all students score at the same performance level.



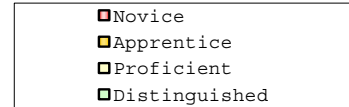
**2008-2009  
INTERIM PERFORMANCE REPORT  
READING DISAGGREGATION  
Performance Level Percents**

School: Oak Hill Elementary School  
District: Pulaski County  
Code: 501420  
Grade: 04

0% 10% 20% 30% 40% 50% 60% 70% 80% 90% 100%



Category	N%	A%	P%	D%	P+D%
<b>Tested Students</b>					
Total	5	23	59	14	72.41
Female	5	16	61	18	79.55
Male	5	30	56	9	65.12
White (Non-Hispanic)	5	23	57	15	71.95
African-American	Unreportable*				
Hispanic	Unreportable*				
Asian					
Other					
Title I	5	23	59	14	72.41
Migrant					
Identified LEP					
Extended Sch Services					
Gifted/Talented	0	9	61	30	91.30
F/R Lunch Approved	6	28	58	8	66.67
Vocational/2 Credits					
Disability	Unreportable*				
Alternate Assessment					
<b>NCLB Accountable Students</b>					
Total	5	24	57	14	71.43
Female	5	17	60	19	78.57
Male	5	31	55	10	64.29
White (Non-Hispanic)	5	24	56	15	71.25
African-American	Unreportable*				
Hispanic	Unreportable*				
Asian					
Other					
Title I	5	24	57	14	71.43
Migrant					
Identified LEP					
Extended Sch Services					
Gifted/Talented	0	9	61	30	91.30
F/R Lunch Approved	6	29	56	9	64.71
Vocational/2 Credits					
Disability	Unreportable*				
Alternate Assessment					



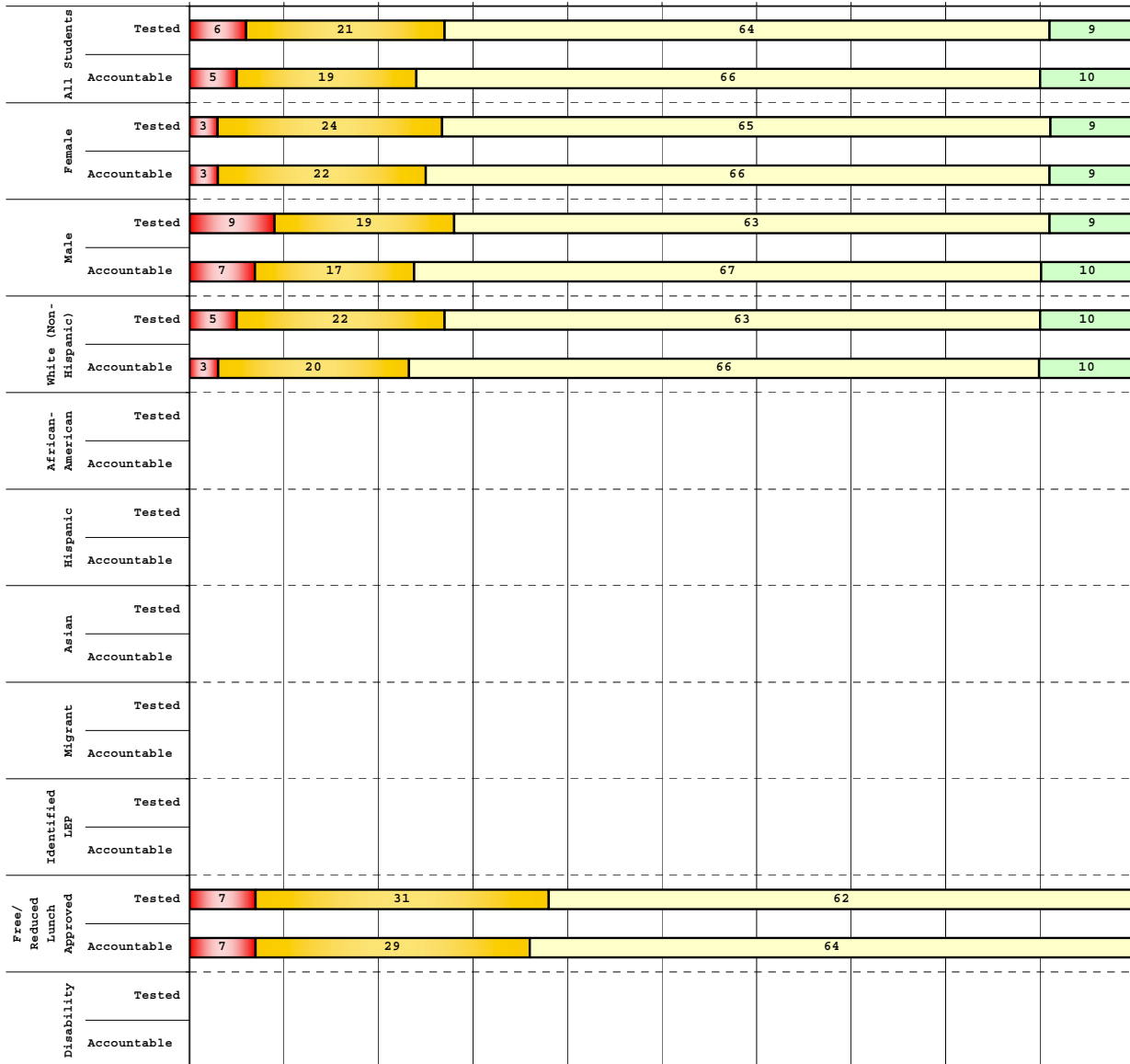
Percentage may not sum to 100% due to rounding. 'Unreportable\*' indicates subpopulations with fewer than 10 students or subpopulations where all students score at the same performance level.



**2008-2009**  
**INTERIM PERFORMANCE REPORT**  
**READING DISAGGREGATION**  
**Performance Level Percents**

School: Oak Hill Elementary School  
 District: Pulaski County  
 Code: 501420  
 Grade: 05

0% 10% 20% 30% 40% 50% 60% 70% 80% 90% 100%

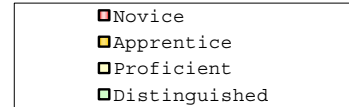


**Tested Students**

	N%	A%	P%	D%	P+D%
Total	6	21	64	9	72.73
Female	3	24	65	9	73.53
Male	9	19	63	9	71.88
White (Non-Hispanic)	5	22	63	10	73.02
African-American	Unreportable*				
Hispanic	Unreportable*				
Asian					
Other					
Title I	6	21	64	9	72.73
Migrant					
Identified LEP	Unreportable*				
Extended Sch Services	Unreportable*				
Gifted/Talented	0	0	58	42	100.00
F/R Lunch Approved	7	31	62	0	62.07
Vocational/2 Credits					
Disability	Unreportable*				
Alternate Assessment					

**NCLB Accountable Students**

	N%	A%	P%	D%	P+D%
Total	5	19	66	10	75.81
Female	3	22	66	9	75.00
Male	7	17	67	10	76.67
White (Non-Hispanic)	3	20	66	10	76.27
African-American	Unreportable*				
Hispanic	Unreportable*				
Asian					
Other					
Title I	5	19	66	10	75.81
Migrant					
Identified LEP	Unreportable*				
Extended Sch Services	Unreportable*				
Gifted/Talented	0	0	58	42	100.00
F/R Lunch Approved	7	29	64	0	64.29
Vocational/2 Credits					
Disability	Unreportable*				
Alternate Assessment					



Percentage may not sum to 100% due to rounding. 'Unreportable\*' indicates subpopulations with fewer than 10 students or subpopulations where all students score at the same performance level.



**2008-2009  
INTERIM PERFORMANCE REPORT  
READING CORE CONTENT**

School: Oak Hill Elementary School  
 District: Pulaski County  
 Code: 501420  
 Grade: 03

	No. Items	No. Observations	SCHOOL								Std. Err.	No. Observations	STATE								School -State Mean
			B	0	1	2	3	4	Mean	B			0	1	2	3	4	Mean			
<b>OPEN RESPONSE</b>																					
2.0.x - Developing Understanding	2	152	0	5	32	43	17	3	1.8	0.1	100,212	0	10	30	44	14	2	1.7	0.1		
3.0.x - Interpreting Text	2	152	0	5	32	43	17	3	1.8	0.1	100,212	0	10	30	44	14	2	1.7	0.1		
<b>MULTIPLE CHOICE</b>																					
1.0.x - Forming a Foundation	32	596	90	10	0				0.90	0.02	392,589	83	17	0				0.83	0.07		
2.0.x - Developing Understanding	89	1,512	85	15	0				0.85	0.01	993,477	80	20	0				0.80	0.05		
3.0.x - Interpreting Text	31	704	84	16	0				0.84	0.02	468,115	77	23	0				0.77	0.07		
5.0.x - Critical Stance	15	322	81	19	0				0.81	0.02	208,359	79	21	0				0.79	0.02		



**2008-2009  
INTERIM PERFORMANCE REPORT  
READING CORE CONTENT**

School: Oak Hill Elementary School  
 District: Pulaski County  
 Code: 501420  
 Grade: 04

	No. Items	No. Observations	SCHOOL								Std. Err.	No. Observations	STATE								School -State Mean
			B	0	1	2	3	4	Mean	B			0	1	2	3	4	Mean			
<b>OPEN RESPONSE</b>																					
2.0.x - Developing Understanding	5	141	0	2	25	59	13	1	1.9	0.1	81,849	0	3	24	52	18	3	1.9	0.0		
3.0.x - Interpreting Text	6	222	0	4	26	50	17	3	1.9	0.1	131,199	0	4	22	45	23	5	2.0	-0.1		
<b>MULTIPLE CHOICE</b>																					
1.0.x - Forming a Foundation	34	671	72	27	0				0.72	0.02	401,452	72	28	0				0.71	0.01		
2.0.x - Developing Understanding	76	1,503	74	26	0				0.74	0.01	868,422	73	27	0				0.73	0.01		
3.0.x - Interpreting Text	29	480	83	17	0				0.83	0.02	278,648	79	21	0				0.79	0.04		
5.0.x - Critical Stance	9	270	67	33	0				0.67	0.03	155,704	74	26	0				0.74	-0.07		



**2008-2009  
INTERIM PERFORMANCE REPORT  
READING CORE CONTENT**

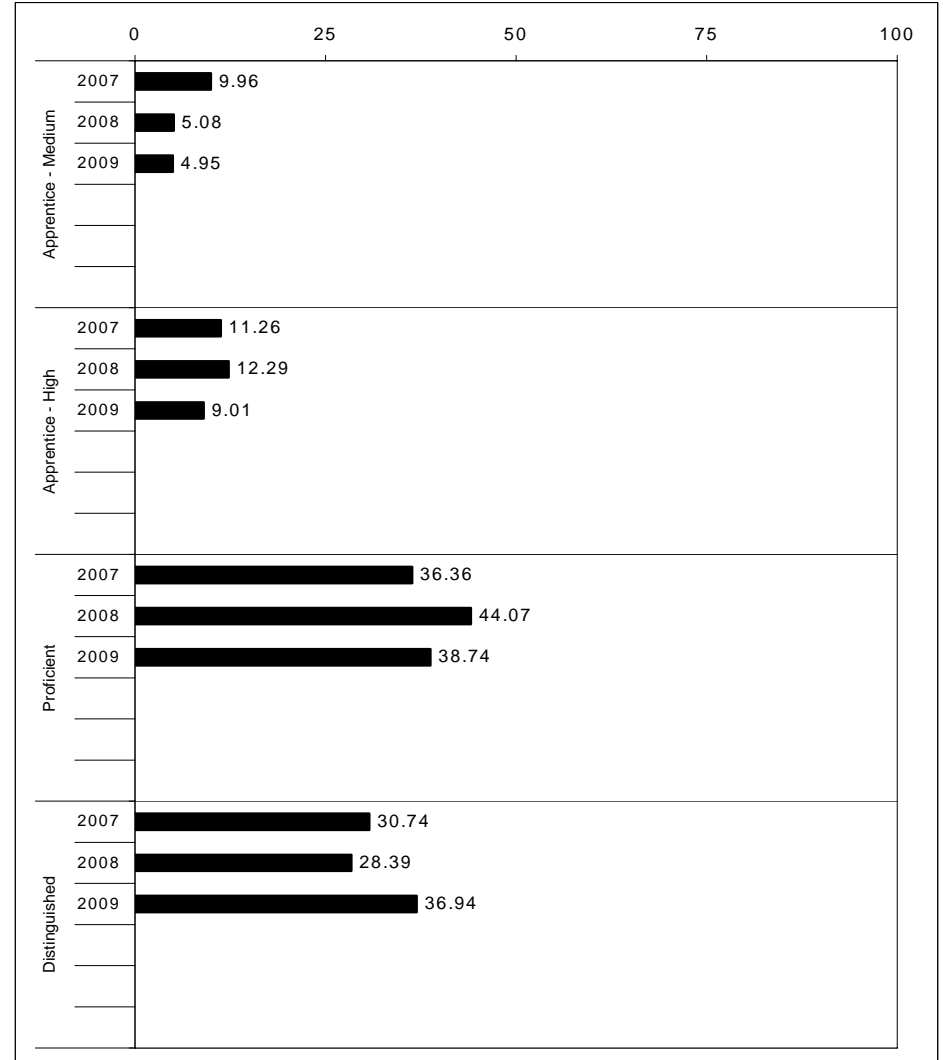
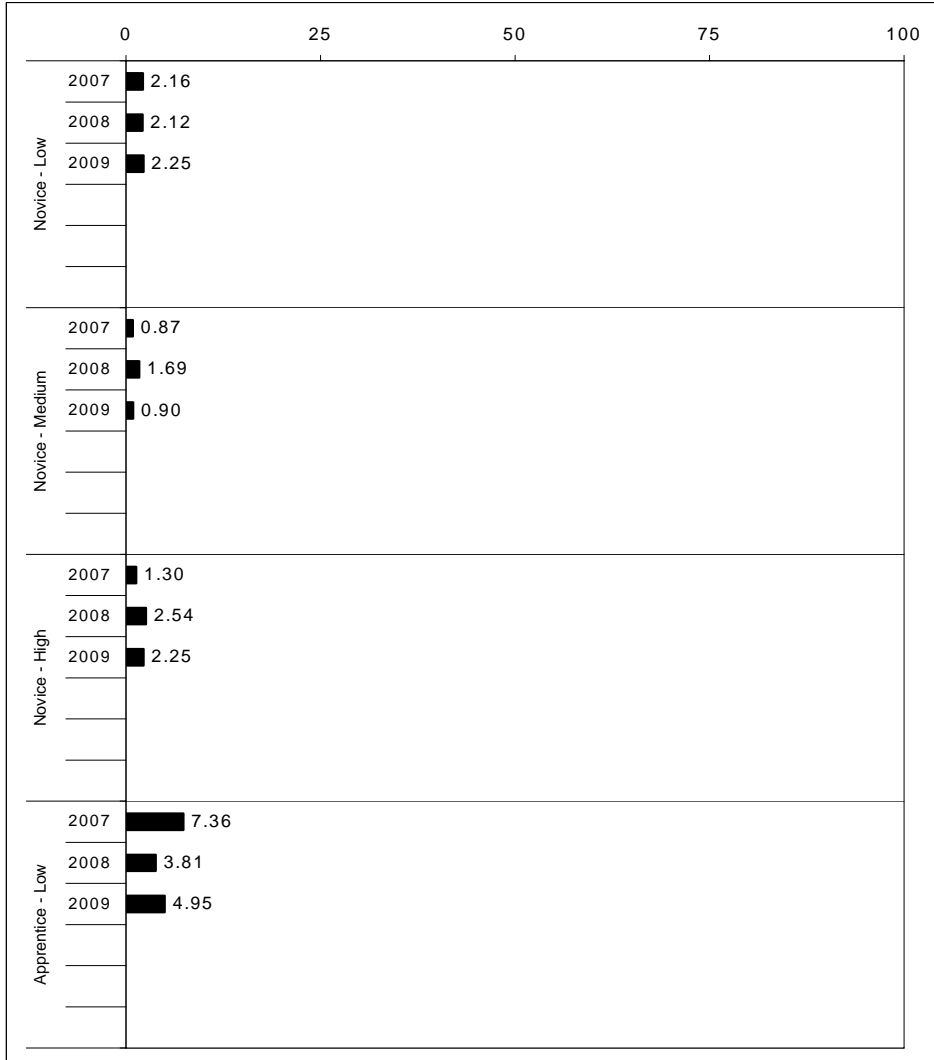
School: Oak Hill Elementary School  
 District: Pulaski County  
 Code: 501420  
 Grade: 05

	No. Items	No. Observations	SCHOOL							Mean	Std. Err.	No. Observations	STATE							Mean	School -State Mean
			B	0	1	2	3	4	B				0	1	2	3	4				
<b>OPEN RESPONSE</b>																					
2.0.x - Developing Understanding	6	113	0	3	22	48	20	7	2.1	0.1	89,507	0	5	23	48	20	5	2.0	0.1		
3.0.x - Interpreting Text	6	165	0	4	22	50	18	5	2.0	0.1	130,403	0	5	21	50	19	4	2.0	0.0		
<b>MULTIPLE CHOICE</b>																					
1.0.x - Forming a Foundation	28	346	76	24	0				0.76	0.02	268,187	74	26	0				0.74	0.02		
2.0.x - Developing Understanding	71	1,041	79	21	0				0.79	0.01	823,068	80	20	0				0.80	-0.01		
3.0.x - Interpreting Text	27	438	83	17	0				0.83	0.02	341,653	81	19	0				0.81	0.02		
5.0.x - Critical Stance	17	378	73	28	0				0.72	0.02	300,671	75	25	0				0.75	-0.03		



2008-2009  
**INTERIM PERFORMANCE REPORT**  
**MATHEMATICS TREND DATA**  
**Performance Level Percents**

School: Oak Hill Elementary School  
 District: Pulaski County  
 Code: 501420  
 Grade: ELEMENTARY



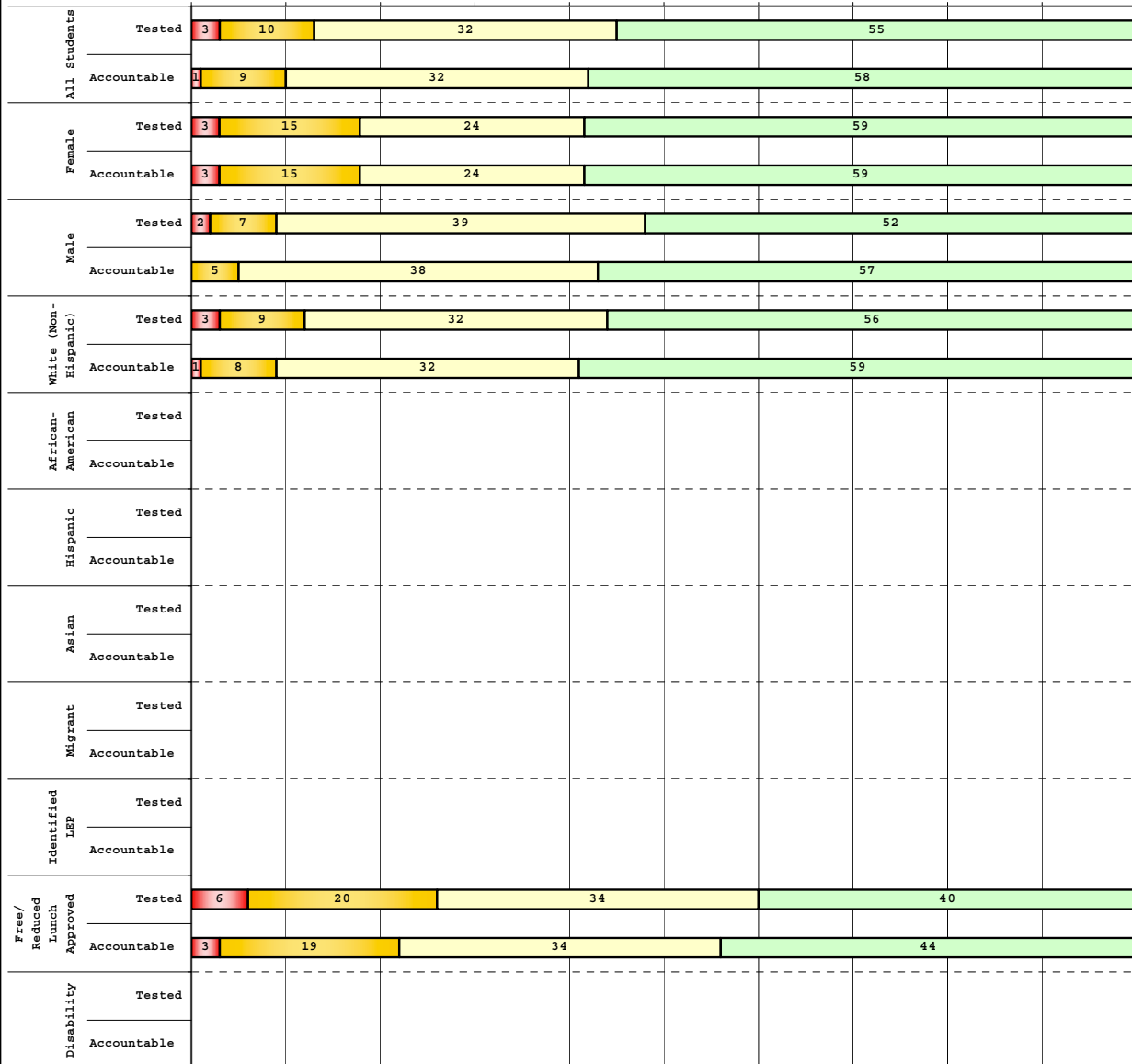
The horizontal bar represents the percent of students scoring at a performance level within a particular year. Percentages may not sum to 100% due to rounding.



2008-2009  
**INTERIM PERFORMANCE REPORT**  
**MATHEMATICS DISAGGREGATION**  
**Performance Level Percents**

School: Oak Hill Elementary School  
 District: Pulaski County  
 Code: 501420  
 Grade: 03

0% 10% 20% 30% 40% 50% 60% 70% 80% 90% 100%



	N%	A%	P%	D%	P+D%
<b>Tested Students</b>					
Total	3	10	32	55	87.18
Female	3	15	24	59	82.35
Male	2	7	39	52	90.91
White (Non-Hispanic)	3	9	32	56	88.31
African-American					
Hispanic					
Asian					
Other	Unreportable*				
Title I	3	10	32	55	87.18
Migrant	Unreportable*				
Identified LEP					
Extended Sch Services	Unreportable*				
Gifted/Talented	0	0	13	88	100.00
F/R Lunch Approved	6	20	34	40	74.29
Vocational/2 Credits					
Disability	Unreportable*				
Alternate Assessment					
<b>NCLB Accountable Students</b>					
Total	1	9	32	58	89.47
Female	3	15	24	59	82.35
Male	0	5	38	57	95.24
White (Non-Hispanic)	1	8	32	59	90.67
African-American					
Hispanic					
Asian					
Other	Unreportable*				
Title I	1	9	32	58	89.47
Migrant	Unreportable*				
Identified LEP					
Extended Sch Services	Unreportable*				
Gifted/Talented	0	0	13	88	100.00
F/R Lunch Approved	3	19	34	44	78.13
Vocational/2 Credits					
Disability	Unreportable*				
Alternate Assessment					

■ Novice
■ Apprentice
■ Proficient
■ Distinguished

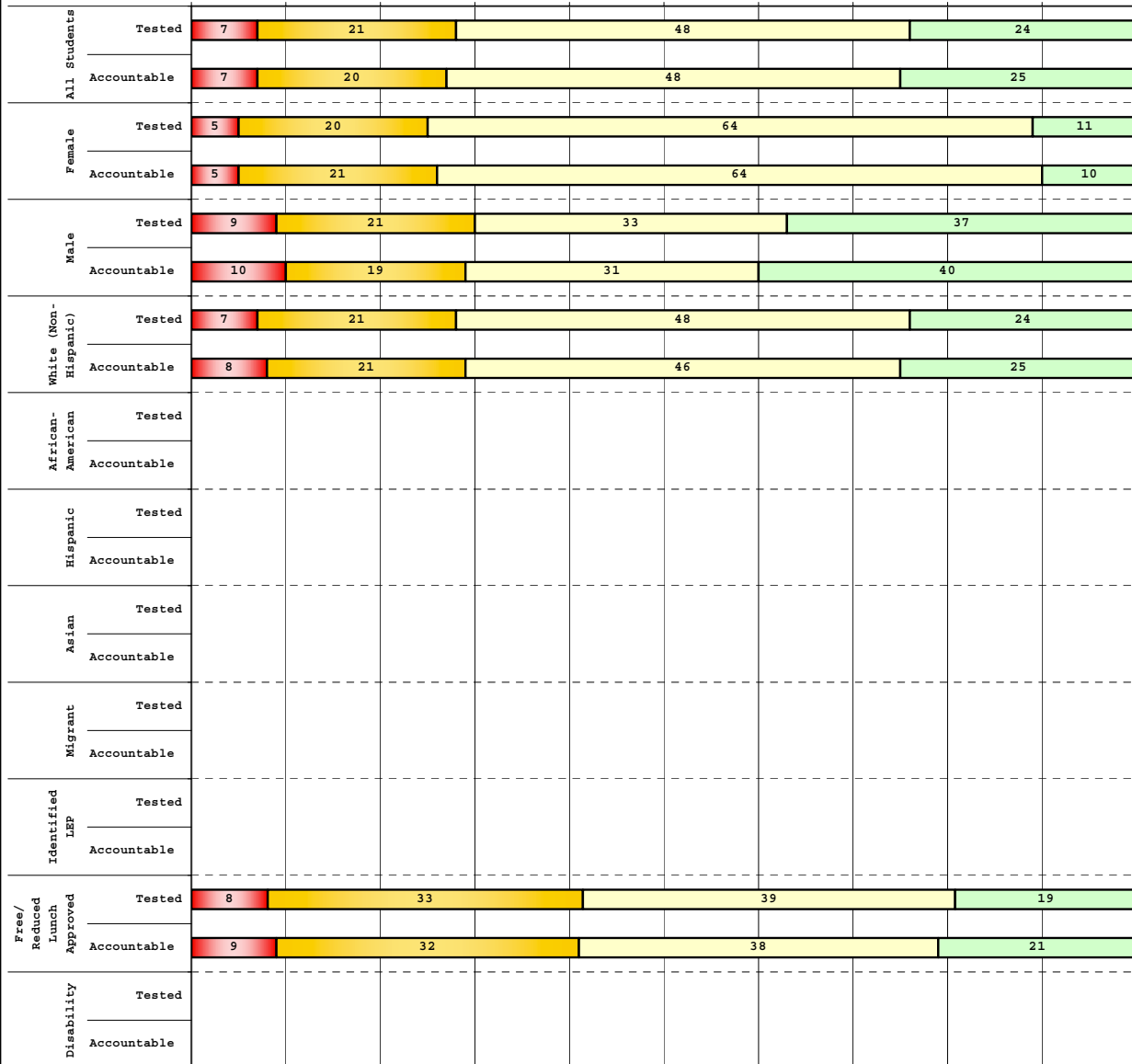
Percentage may not sum to 100% due to rounding. 'Unreportable\*' indicates subpopulations with fewer than 10 students or subpopulations where all students score at the same performance level.



2008-2009  
**INTERIM PERFORMANCE REPORT**  
**MATHEMATICS DISAGGREGATION**  
**Performance Level Percents**

School: Oak Hill Elementary School  
 District: Pulaski County  
 Code: 501420  
 Grade: 04

0% 10% 20% 30% 40% 50% 60% 70% 80% 90% 100%



**Tested Students**

	N%	A%	P%	D%	P+D%
Total	7	21	48	24	72.41
Female	5	20	64	11	75.00
Male	9	21	33	37	69.77
White (Non-Hispanic)	7	21	48	24	71.95
African-American	Unreportable*				
Hispanic	Unreportable*				
Asian					
Other					
Title I	7	21	48	24	72.41
Migrant					
Identified LEP					
Extended Sch Services					
Gifted/Talented	0	0	43	57	100.00
F/R Lunch Approved	8	33	39	19	58.33
Vocational/2 Credits					
Disability	Unreportable*				
Alternate Assessment					

**NCLB Accountable Students**

	N%	A%	P%	D%	P+D%
Total	7	20	48	25	72.62
Female	5	21	64	10	73.81
Male	10	19	31	40	71.43
White (Non-Hispanic)	8	21	46	25	71.25
African-American	Unreportable*				
Hispanic	Unreportable*				
Asian					
Other					
Title I	7	20	48	25	72.62
Migrant					
Identified LEP					
Extended Sch Services					
Gifted/Talented	0	0	43	57	100.00
F/R Lunch Approved	9	32	38	21	58.82
Vocational/2 Credits					
Disability	Unreportable*				
Alternate Assessment					

■ Novice  
■ Apprentice  
■ Proficient  
■ Distinguished

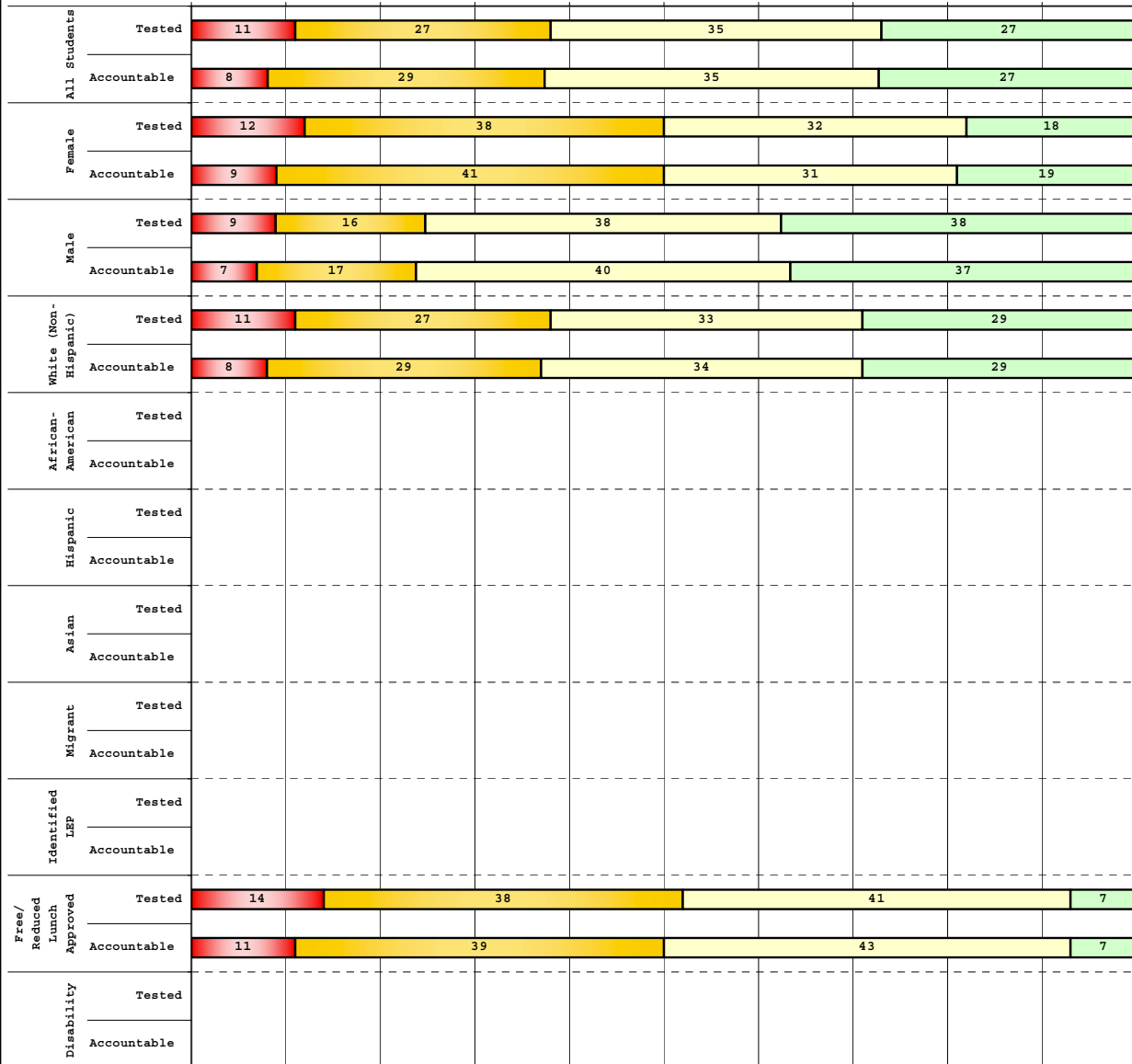
Percentage may not sum to 100% due to rounding. 'Unreportable\*' indicates subpopulations with fewer than 10 students or subpopulations where all students score at the same performance level.



**2008-2009**  
**INTERIM PERFORMANCE REPORT**  
**MATHEMATICS DISAGGREGATION**  
**Performance Level Percents**

School: Oak Hill Elementary School  
 District: Pulaski County  
 Code: 501420  
 Grade: 05

0% 10% 20% 30% 40% 50% 60% 70% 80% 90% 100%



	N%	A%	P%	D%	P+D%
<b>Tested Students</b>					
Total	11	27	35	27	62.12
Female	12	38	32	18	50.00
Male	9	16	38	38	75.00
White (Non-Hispanic)	11	27	33	29	61.90
African-American	Unreportable*				
Hispanic	Unreportable*				
Asian					
Other					
Title I	11	27	35	27	62.12
Migrant					
Identified LEP	Unreportable*				
Extended Sch Services	Unreportable*				
Gifted/Talented	0	0	42	58	100.00
F/R Lunch Approved	14	38	41	7	48.28
Vocational/2 Credits					
Disability	Unreportable*				
Alternate Assessment					
<b>NCLB Accountable Students</b>					
Total	8	29	35	27	62.90
Female	9	41	31	19	50.00
Male	7	17	40	37	76.67
White (Non-Hispanic)	8	29	34	29	62.71
African-American	Unreportable*				
Hispanic	Unreportable*				
Asian					
Other					
Title I	8	29	35	27	62.90
Migrant					
Identified LEP	Unreportable*				
Extended Sch Services	Unreportable*				
Gifted/Talented	0	0	42	58	100.00
F/R Lunch Approved	11	39	43	7	50.00
Vocational/2 Credits					
Disability	Unreportable*				
Alternate Assessment					

■ Novice  
■ Apprentice  
■ Proficient  
■ Distinguished

Percentage may not sum to 100% due to rounding. 'Unreportable\*' indicates subpopulations with fewer than 10 students or subpopulations where all students score at the same performance level.



**2008-2009**  
**INTERIM PERFORMANCE REPORT**  
**MATHEMATICS CORE CONTENT**

School: Oak Hill Elementary School  
 District: Pulaski County  
 Code: 501420  
 Grade: 03

	No. Items	No. Observations	SCHOOL								STATE								School -State Mean
			Percents						Mean	Std. Err.	Percents						Mean		
			B	0	1	2	3	4					No. Observations	B	0	1		2	3
<b>OPEN RESPONSE</b>																			
1.x.x - Number Prop Oper	5	190	0	17	31	29	11	13	1.7	0.1	125,243	0	21	35	26	10	8	1.5	0.2
2.x.x - Measurement	1	12	0	17	0	42	8	33	2.4	0.4	8,325	0	25	5	30	14	25	2.1	0.3
3.x.x - Geometry	2	26	0	0	12	31	15	42	2.9	0.2	16,777	0	8	24	35	13	20	2.1	0.8
4.x.x - Data Analysis & Probabilit	1	76	0	1	12	21	30	36	2.9	0.1	50,106	0	9	13	19	27	32	2.6	0.3
5.x.x - Algebraic Thinking	2	88	0	2	13	19	33	33	2.8	0.1	58,404	0	9	14	19	28	31	2.6	0.2
<b>MULTIPLE CHOICE</b>																			
1.x.x - Number Prop Oper	32	1,228	84	16	0				0.84	0.01	810,106	74	26	0				0.74	0.10
2.x.x - Measurement	7	278	87	13	0				0.87	0.02	183,647	81	18	0				0.81	0.06
3.x.x - Geometry	18	608	89	11	0				0.89	0.01	400,848	85	15	0				0.85	0.04
4.x.x - Data Analysis & Probabilit	8	292	83	17	0				0.83	0.03	192,126	69	31	0				0.69	0.14
5.x.x - Algebraic Thinking	11	330	84	16	0				0.84	0.02	217,089	78	22	0				0.78	0.06



**2008-2009**  
**INTERIM PERFORMANCE REPORT**  
**MATHEMATICS CORE CONTENT**

School: Oak Hill Elementary School  
 District: Pulaski County  
 Code: 501420  
 Grade: 04

	No. Items	No. Observations	SCHOOL								Std. Err.	No. Observations	STATE								School -State Mean
			B	0	1	2	3	4	Mean	B			0	1	2	3	4	Mean			
<b>OPEN RESPONSE</b>																					
1.x.x - Number Prop Oper	4	130	0	28	21	35	12	5	1.5	0.1	73,656	0	17	24	29	19	12	1.9	-0.4		
2.x.x - Measurement	1	17	0	82	6	0	6	6	0.5	0.4	8,195	0	43	13	10	20	13	1.5	-1.0		
3.x.x - Geometry	2	94	0	12	28	22	10	29	2.2	0.1	57,352	0	11	20	17	19	33	2.4	-0.2		
4.x.x - Data Analysis & Probabilit	1	15	0	7	53	33	7	0	1.4	0.3	8,152	0	5	36	29	23	6	1.9	-0.5		
5.x.x - Algebraic Thinking	2	97	0	3	26	36	22	13	2.2	0.1	57,508	0	5	27	32	25	11	2.1	0.1		
<b>MULTIPLE CHOICE</b>																					
1.x.x - Number Prop Oper	31	1,131	67	33	0				0.67	0.01	664,194	67	33	0				0.67	0.00		
2.x.x - Measurement	7	246	66	34	0				0.66	0.03	139,170	62	38	0				0.62	0.04		
3.x.x - Geometry	14	473	76	24	0				0.76	0.02	278,460	77	23	0				0.77	-0.01		
4.x.x - Data Analysis & Probabilit	12	520	69	30	0				0.69	0.02	303,394	71	29	0				0.71	-0.02		
5.x.x - Algebraic Thinking	11	432	71	29	0				0.71	0.02	253,829	69	31	0				0.69	0.02		



**2008-2009**  
**INTERIM PERFORMANCE REPORT**  
**MATHEMATICS CORE CONTENT**

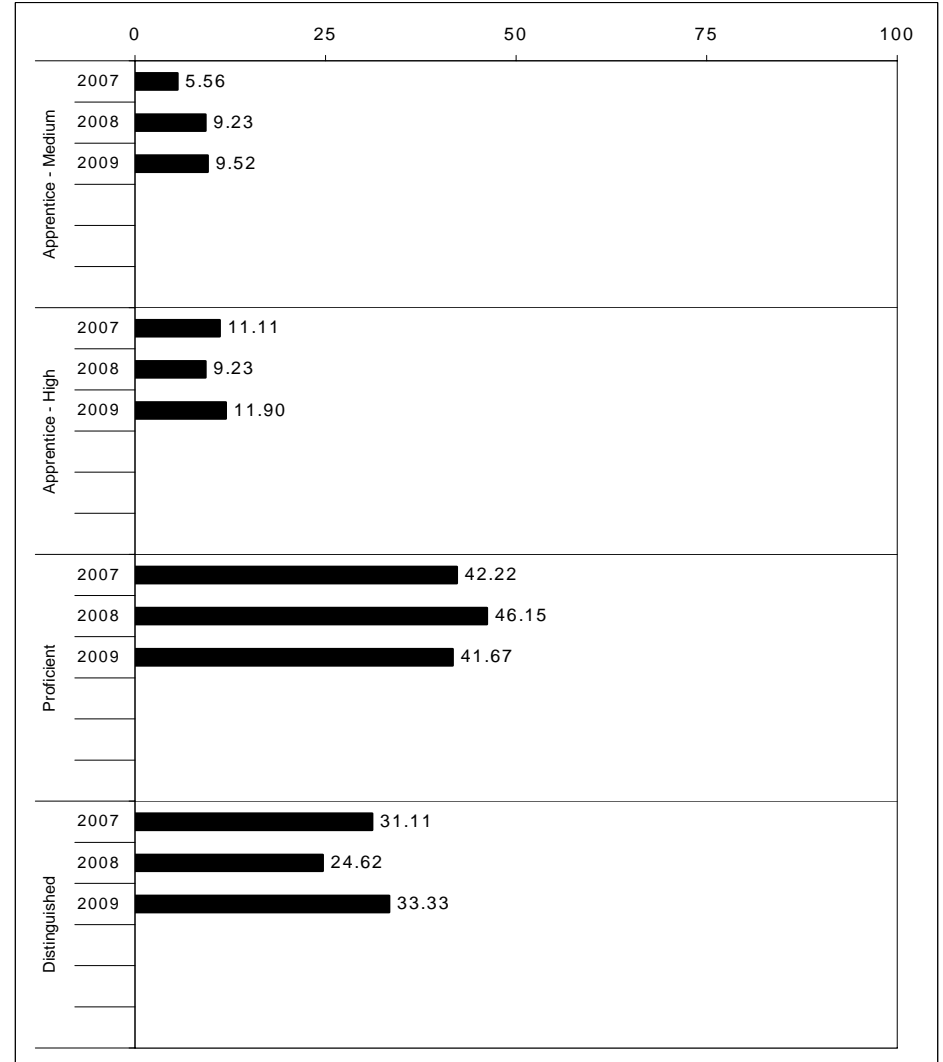
School: Oak Hill Elementary School  
 District: Pulaski County  
 Code: 501420  
 Grade: 05

	No. Items	No. Observations	SCHOOL								STATE								School -State Mean
			Percents						Mean	Std. Err.	Percents								
			B	0	1	2	3	4					No. Observations	B	0	1	2	3	4
<b>OPEN RESPONSE</b>																			
1.x.x - Number Prop Oper	4	93	0	9	18	20	23	30	2.5	0.1	73,199	0	8	20	18	25	29	2.5	0.0
2.x.x - Measurement	1	10	0	20	20	10	20	30	2.2	0.4	8,380	0	37	30	13	10	11	1.3	0.9
3.x.x - Geometry	2	74	0	1	28	26	26	19	2.3	0.1	56,900	0	6	24	30	26	14	2.2	0.1
4.x.x - Data Analysis & Probabilit	1	62	0	10	27	21	13	29	2.2	0.2	48,828	0	15	18	15	17	35	2.4	-0.2
5.x.x - Algebraic Thinking	1	9							***		8,005	0	13	15	20	17	35	2.5	
<b>MULTIPLE CHOICE</b>																			
1.x.x - Number Prop Oper	29	816	Correct	Incorrect	Omit/Mult				0.65	0.02	643,144	Correct	Incorrect	Omit/Mult				0.63	0.02
2.x.x - Measurement	9	195	65	35	0				0.54	0.03	154,489	63	37	0				0.62	-0.08
3.x.x - Geometry	14	350	54	46	0				0.75	0.02	276,516	78	22	0				0.78	-0.03
4.x.x - Data Analysis & Probabilit	11	322	75	25	0				0.53	0.03	252,212	64	36	0				0.64	-0.11
5.x.x - Algebraic Thinking	10	310	53	47	0				0.69	0.03	244,140	64	36	0				0.65	0.04



2008-2009  
**INTERIM PERFORMANCE REPORT**  
**SCIENCE TREND DATA**  
**Performance Level Percents**

School: Oak Hill Elementary School  
 District: Pulaski County  
 Code: 501420  
 Grade: 04



The horizontal bar represents the percent of students scoring at a performance level within a particular year. Percentages may not sum to 100% due to rounding.



**2008-2009  
INTERIM PERFORMANCE REPORT  
SCIENCE DISAGGREGATION  
Performance Level Percents**

School: Oak Hill Elementary School  
District: Pulaski County  
Code: 501420  
Grade: 04

		0%	10%	20%	30%	40%	50%	60%	70%	80%	90%	100%	N%	A%	P%	D%	P+D%	
All Students	Tested	3	23	41	32													
	100 Days	4	21	42	33													
Female	Tested	2	23	48	27													
	100 Days	2	21	50	26													
Male	Tested	5	23	35	37													
	100 Days	5	21	33	40													
White (Non-Hispanic)	Tested	4	22	41	33													
	100 Days	4	21	41	34													
African-American	Tested																	
	100 Days																	
Hispanic	Tested																	
	100 Days																	
Asian	Tested																	
	100 Days																	
Migrant	Tested																	
	100 Days																	
Identified LEP	Tested																	
	100 Days																	
Free/Reduced Lunch Approved	Tested	6	33	44	17													
	100 Days	6	29	47	18													
Disability	Tested																	
	100 Days																	

Tested Students		N%	A%	P%	D%	P+D%
Total		3	23	41	32	73.56
Female		2	23	48	27	75.00
Male		5	23	35	37	72.09
White (Non-Hispanic)		4	22	41	33	74.39
African-American	Unreportable*					
Hispanic	Unreportable*					
Asian						
Other						
Title I		3	23	41	32	73.56
Migrant						
Identified LEP						
Extended Sch Services						
Gifted/Talented		0	0	35	65	100.00
F/R Lunch Approved		6	33	44	17	61.11
Vocational/2 Credits						
Disability	Unreportable*					
Alternate Assessment						
<b>100 Day Students</b>						
Total		4	21	42	33	75.00
Female		2	21	50	26	76.19
Male		5	21	33	40	73.81
White (Non-Hispanic)		4	21	41	34	75.00
African-American	Unreportable*					
Hispanic	Unreportable*					
Asian						
Other						
Title I		4	21	42	33	75.00
Migrant						
Identified LEP						
Extended Sch Services						
Gifted/Talented		0	0	35	65	100.00
F/R Lunch Approved		6	29	47	18	64.71
Vocational/2 Credits						
Disability	Unreportable*					
Alternate Assessment						

■ Novice
■ Apprentice
■ Proficient
■ Distinguished

Percentage may not sum to 100% due to rounding. 'Unreportable\*' indicates subpopulations with fewer than 10 students or subpopulations where all students score at the same performance level.



**2008-2009**  
**INTERIM PERFORMANCE REPORT**  
**SCIENCE CORE CONTENT**

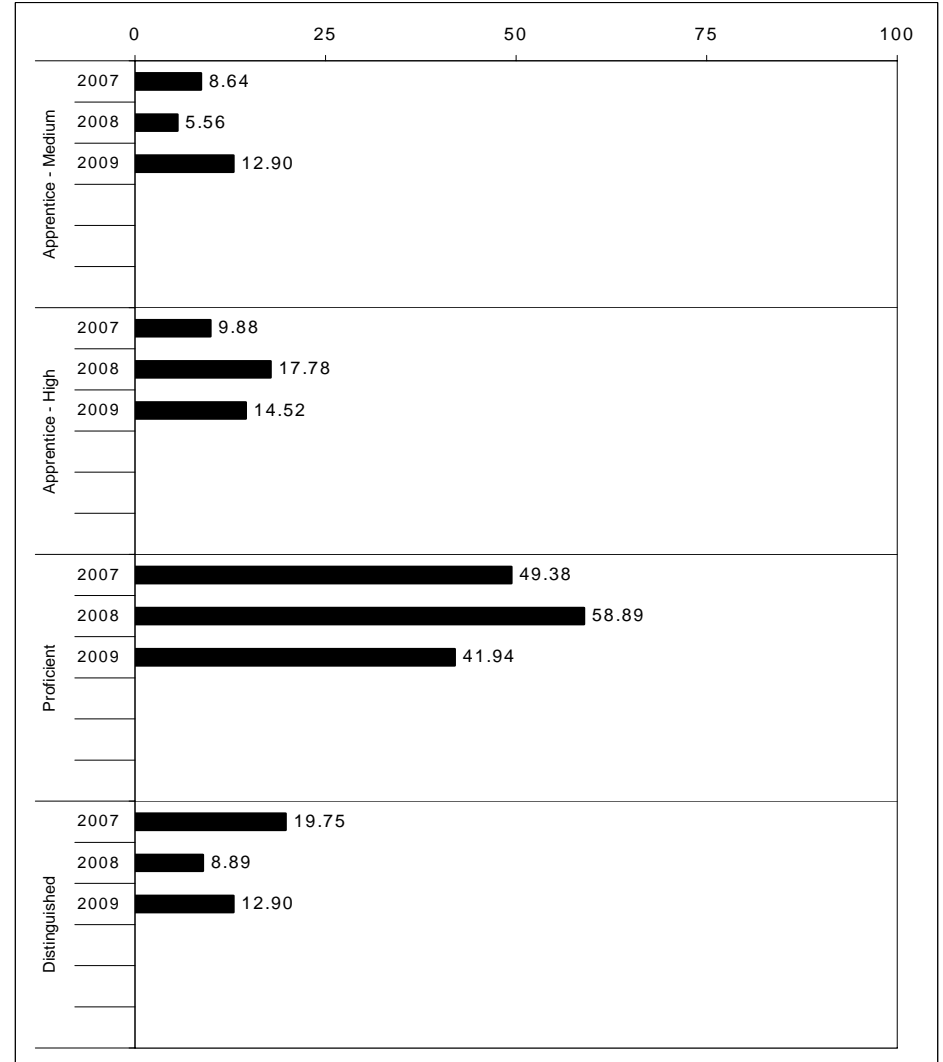
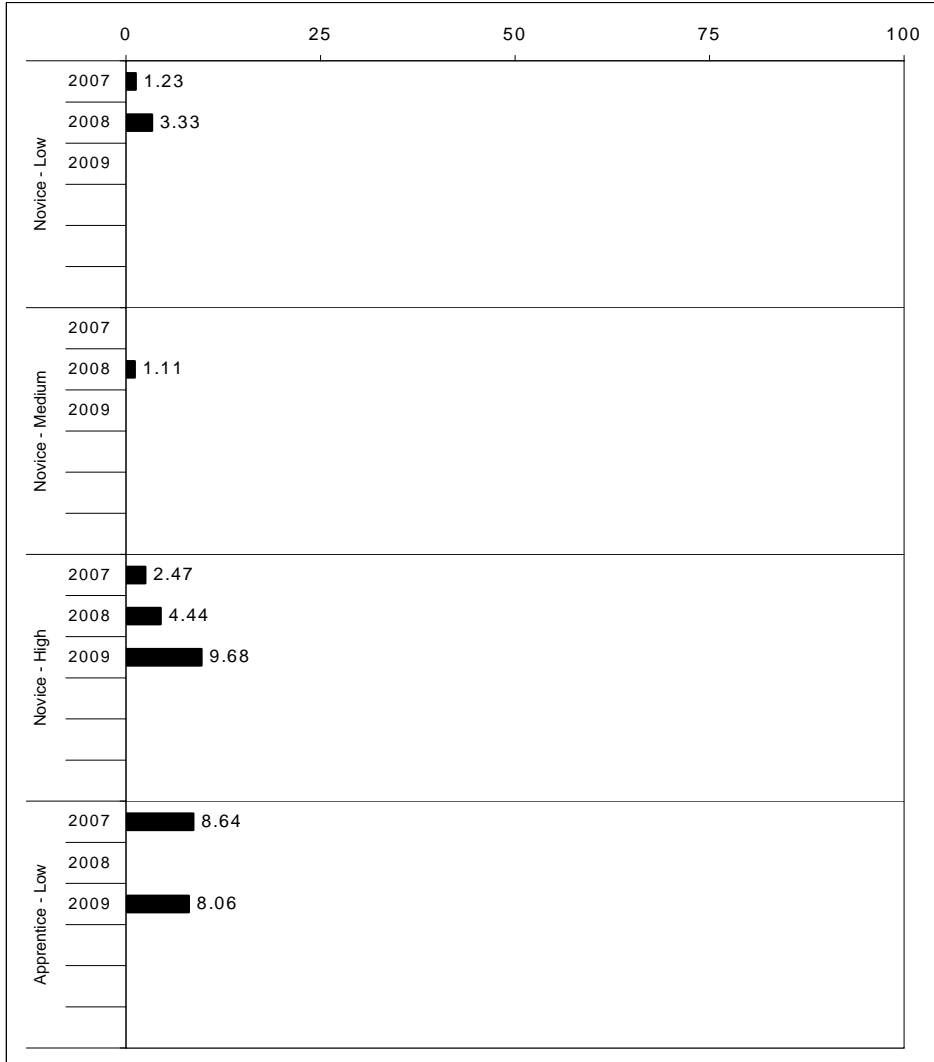
School: Oak Hill Elementary School  
 District: Pulaski County  
 Code: 501420  
 Grade: 04

	No. Items	No. Observations	SCHOOL								STATE								School -State Mean	
			Percents						Mean	Std. Err.	No. Observations	Percents						Mean		
			B	0	1	2	3	4							B	0	1		2	3
<b>OPEN RESPONSE</b>																				
1.x.x - Physical Science	2	25	0	8	40	44	8	0	1.5	0.2	16,337	0	17	19	42	17	5	1.7	-0.2	
2.x.x - Earth Space Science	3	112	0	12	24	41	21	3	1.8	0.1	65,658	0	12	22	35	26	4	1.9	-0.1	
3.x.x - Biological Science	3	115	0	2	7	37	43	11	2.6	0.1	65,506	0	2	11	33	44	9	2.5	0.1	
4.x.x - Unifying Concepts	2	97	0	2	10	25	44	19	2.7	0.1	57,508	0	3	13	33	35	15	2.5	0.2	
<b>MULTIPLE CHOICE</b>																				
			<b>Correct</b>	<b>Incorrect</b>	<b>Omit/Mult</b>							<b>Correct</b>	<b>Incorrect</b>	<b>Omit/Mult</b>						
1.x.x - Physical Science	18	672	81	19	0				0.81	0.01	393,336	82	18	0				0.81	0.00	
2.x.x - Earth Space Science	19	687	74	26	0				0.74	0.02	401,488	71	29	0				0.71	0.03	
3.x.x - Biological Science	22	798	82	18	0				0.82	0.01	467,138	78	22	0				0.78	0.04	
4.x.x - Unifying Concepts	14	546	86	14	0				0.86	0.02	319,534	84	15	0				0.84	0.02	



2008-2009  
**INTERIM PERFORMANCE REPORT**  
**SOCIAL STUDIES TREND DATA**  
**Performance Level Percents**

School: Oak Hill Elementary School  
 District: Pulaski County  
 Code: 501420  
 Grade: 05



The horizontal bar represents the percent of students scoring at a performance level within a particular year. Percentages may not sum to 100% due to rounding.



2008-2009  
**INTERIM PERFORMANCE REPORT**  
**SOCIAL STUDIES DISAGGREGATION**  
**Performance Level Percents**

School: Oak Hill Elementary School  
 District: Pulaski County  
 Code: 501420  
 Grade: 05

		0%	10%	20%	30%	40%	50%	60%	70%	80%	90%	100%	N%	A%	P%	D%	P+D%	
All Students	Tested	12	33	42	12								<b>Tested Students</b>					
	100 Days	10	35	42	13								Total	12	33	42	12	54.55
Female	Tested	12	44	32	12								Female	12	44	32	12	44.12
	100 Days	9	47	31	13								Male	13	22	53	13	65.63
Male	Tested	13	22	53	13								White (Non-Hispanic)	13	33	41	13	53.97
	100 Days	10	23	53	13								African-American	Unreportable*				
White (Non-Hispanic)	Tested	13	33	41	13								Hispanic	Unreportable*				
	100 Days	10	36	41	14								Asian					
African-American	Tested												Other					
	100 Days												Title I	12	33	42	12	54.55
Hispanic	Tested												Migrant					
	100 Days												Identified LEP	Unreportable*				
Asian	Tested												Extended Sch Services	Unreportable*				
	100 Days												Gifted/Talented	0	0	50	50	100.00
Migrant	Tested												F/R Lunch Approved	14	55	24	7	31.03
	100 Days												Vocational/2 Credits					
Identified LEP	Tested												Disability	Unreportable*				
	100 Days												Alternate Assessment					
Free/Reduced Lunch Approved	Tested	14	55	24	7								<b>100 Day Students</b>					
	100 Days	11	57	25	7								Total	10	35	42	13	54.84
Disability	Tested												Female	9	47	31	13	43.75
	100 Days												Male	10	23	53	13	66.67
	Tested												White (Non-Hispanic)	10	36	41	14	54.24
	100 Days												African-American	Unreportable*				
	Tested												Hispanic	Unreportable*				
	100 Days												Asian					
	Tested												Other					
	100 Days												Title I	10	35	42	13	54.84
	Tested												Migrant					
	100 Days												Identified LEP	Unreportable*				
	Tested												Extended Sch Services	Unreportable*				
	100 Days												Gifted/Talented	0	0	50	50	100.00
	Tested												F/R Lunch Approved	11	57	25	7	32.14
	100 Days												Vocational/2 Credits					
	Tested												Disability	Unreportable*				
	100 Days												Alternate Assessment					

■	Novice
■	Apprentice
■	Proficient
■	Distinguished

Percentage may not sum to 100% due to rounding. 'Unreportable\*' indicates subpopulations with fewer than 10 students or subpopulations where all students score at the same performance level.



**2008-2009**  
**INTERIM PERFORMANCE REPORT**  
**SOCIAL STUDIES CORE CONTENT**

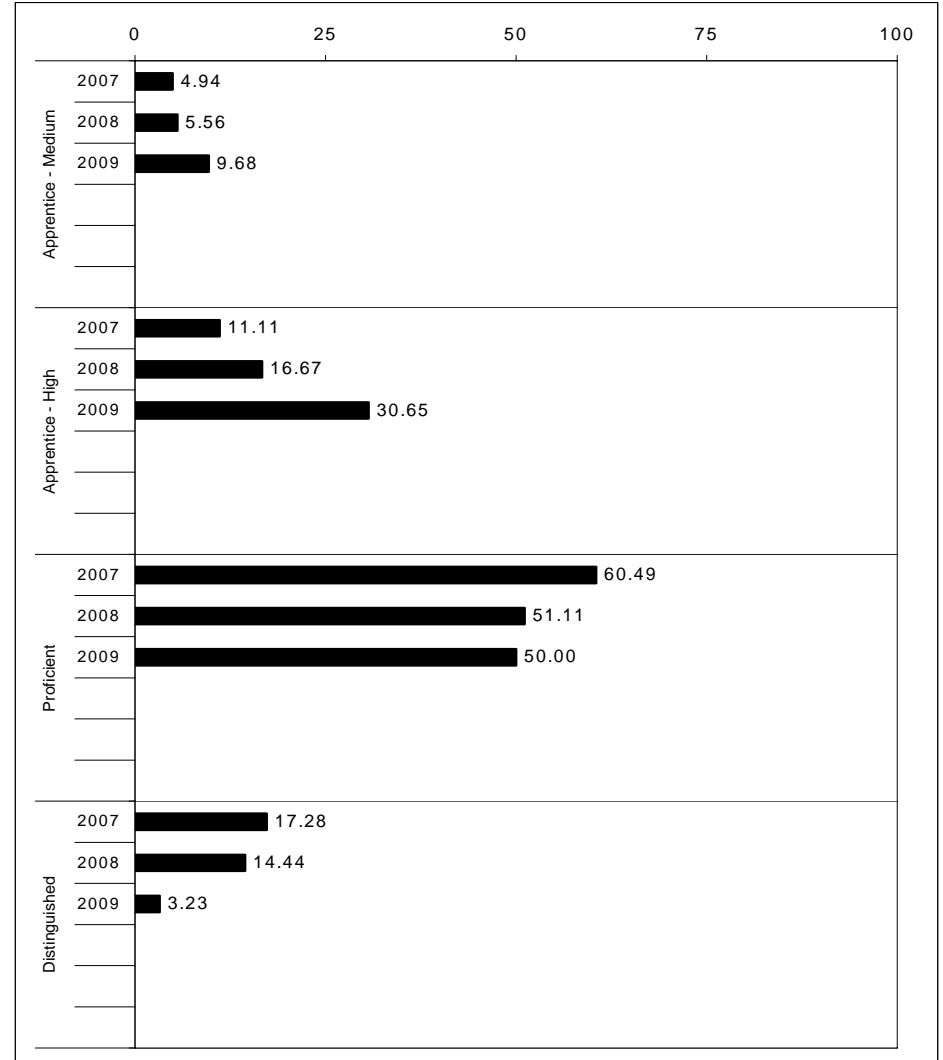
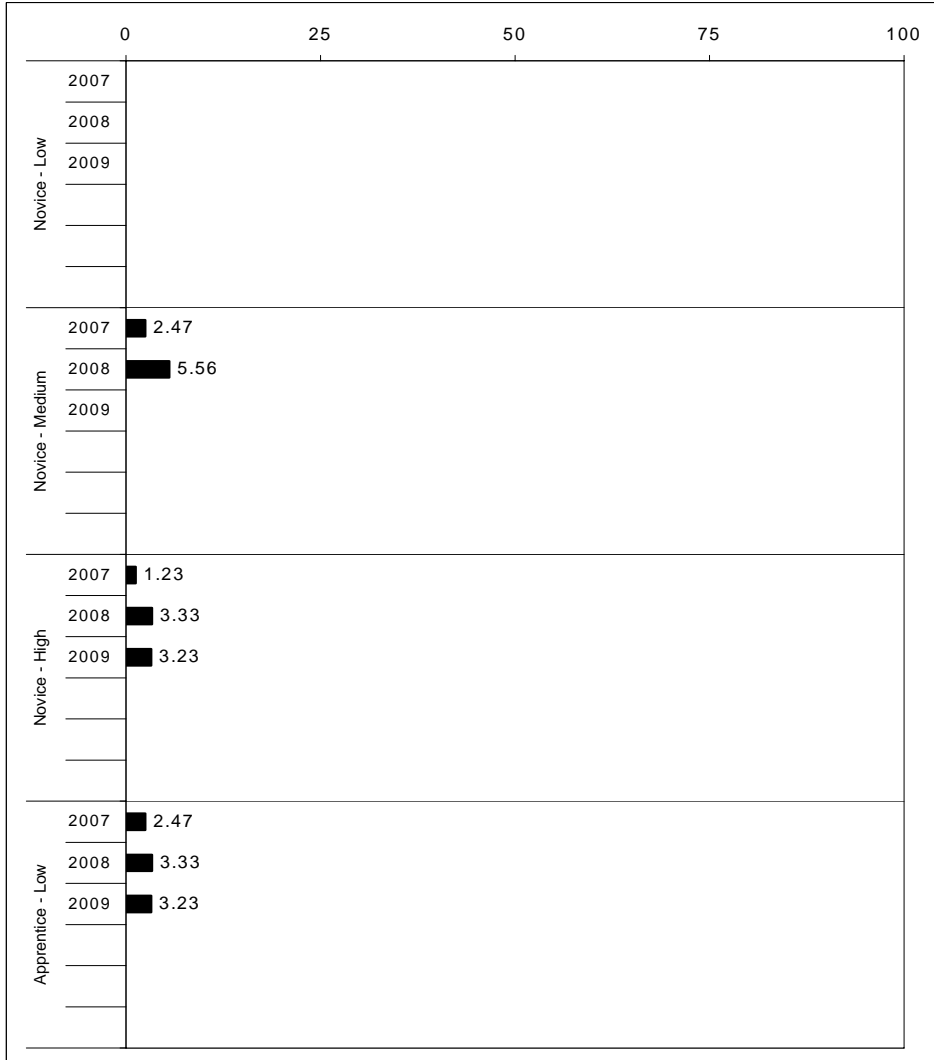
School: Oak Hill Elementary School  
 District: Pulaski County  
 Code: 501420  
 Grade: 05

	No. Items	No. Observations	SCHOOL								Std. Err.	No. Observations	STATE								School -State Mean
			B	0	1	2	3	4	Mean	B			0	1	2	3	4	Mean			
<b>OPEN RESPONSE</b>																					
1.x.x - Government & Civics	2	72	0	8	39	42	7	4	1.6	0.1	56,903	0	5	37	45	10	2	1.7	-0.1		
2.x.x - Cultures & Societies	1	10	0	0	40	50	10	0	1.7	0.3	8,151	0	4	21	56	15	4	1.9	-0.2		
3.x.x - Economics	1	62	0	8	37	40	15	0	1.6	0.1	48,828	0	11	33	41	12	3	1.6	0.0		
4.x.x - Geography	2	21	0	5	43	38	10	5	1.7	0.2	16,077	0	9	32	39	17	3	1.7	0.0		
5.x.x - Historical Perspective	3	83	0	4	39	51	7	0	1.6	0.1	65,353	0	7	35	46	10	2	1.7	-0.1		
<b>MULTIPLE CHOICE</b>																					
1.x.x - Government & Civics	14	404	66	34	Omit/Mult			0	0.66	0.02	317,571	66	34	Omit/Mult			0	0.66	0.00		
2.x.x - Cultures & Societies	11	270	66	34	Omit/Mult			0	0.66	0.03	211,383	70	30	Omit/Mult			0	0.69	-0.03		
3.x.x - Economics	11	320	78	23	Omit/Mult			0	0.78	0.02	252,215	73	27	Omit/Mult			0	0.73	0.05		
4.x.x - Geography	16	472	63	38	Omit/Mult			0	0.63	0.02	374,337	66	34	Omit/Mult			0	0.66	-0.03		
5.x.x - Historical Perspective	27	746	67	34	Omit/Mult			0	0.66	0.02	586,076	69	31	Omit/Mult			0	0.69	-0.03		



2008-2009  
**INTERIM PERFORMANCE REPORT**  
**WRITING ON-DEMAND TREND DATA**  
**Performance Level Percents**

School: Oak Hill Elementary School  
 District: Pulaski County  
 Code: 501420  
 Grade: 05

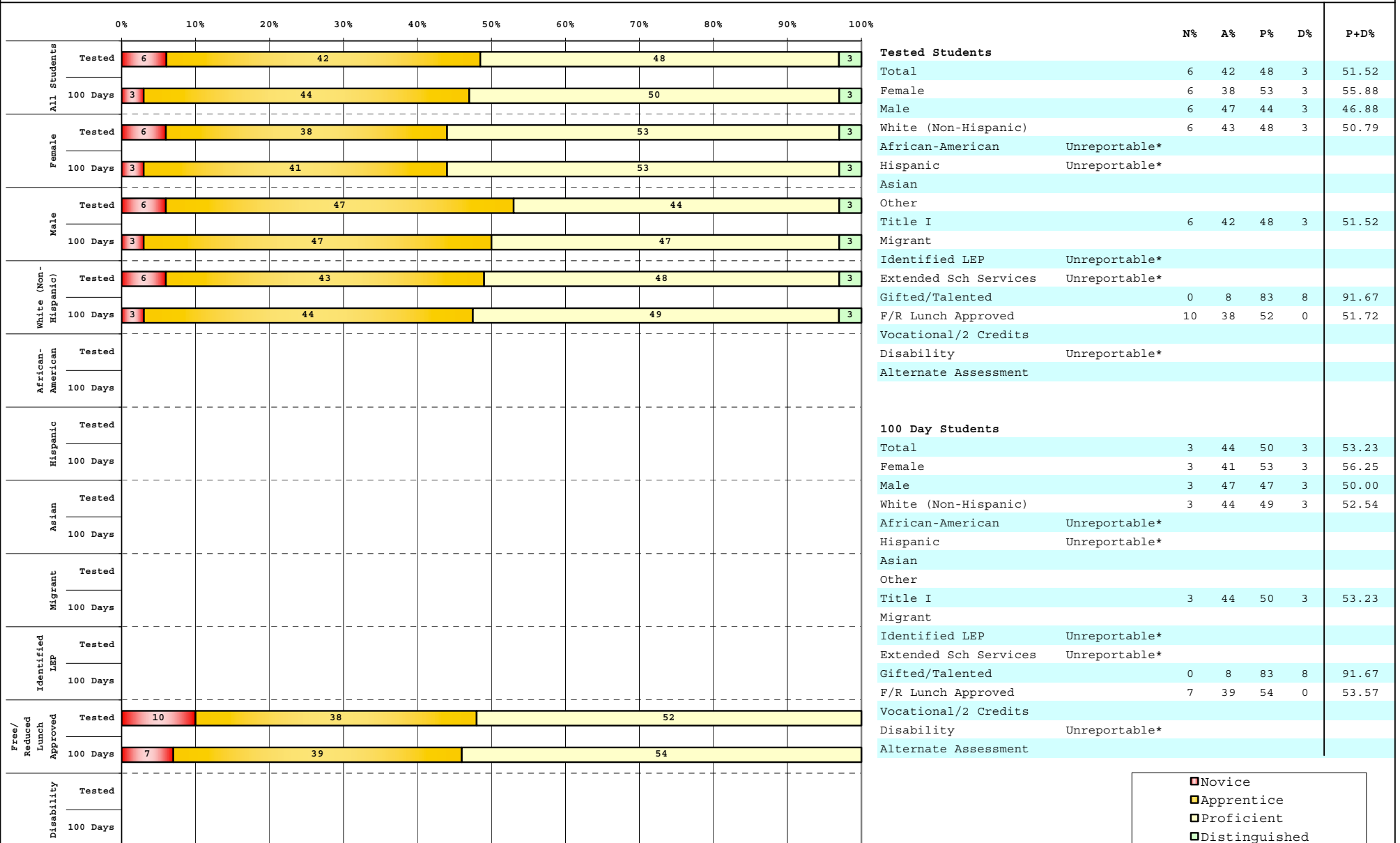


The horizontal bar represents the percent of students scoring at a performance level within a particular year. Percentages may not sum to 100% due to rounding.



2008-2009  
**INTERIM PERFORMANCE REPORT**  
**WRITING ON-DEMAND DISAGGREGATION**  
**Performance Level Percents**

School: Oak Hill Elementary School  
 District: Pulaski County  
 Code: 501420  
 Grade: 05



■ Novice
■ Apprentice
■ Proficient
■ Distinguished

Percentage may not sum to 100% due to rounding. 'Unreportable\*' indicates subpopulations with fewer than 10 students or subpopulations where all students score at the same performance level.



**2008-2009**  
**INTERIM PERFORMANCE REPORT**  
**WRITING ON-DEMAND CORE CONTENT**

School: Oak Hill Elementary School  
 District: Pulaski County  
 Code: 501420  
 Grade: 05

WRITING PROMPT	SCHOOL											STATE											School	
	No. Observations	Percents										Mean	Percents										Mean	-State Mean
	B	0	1	2	3	4	5	6	7	8	Mean	B	0	1	2	3	4	5	6	7	8	Mean		
<b>Inform</b>																								
1.X.X - Content	22	0	0	5	9	0	36	23	27	0	0	4.45	0	1	1	9	9	34	18	21	4	2	4.43	0.02
2.X.X - Structure	22	0	0	5	9	5	41	23	18	0	0	4.23	0	1	2	9	10	35	19	19	3	1	4.33	-0.10
3.X.X - Convention	22	0	0	0	9	9	41	32	9	0	0	4.23	0	0	0	12	11	34	19	19	3	1	4.38	-0.15
<b>Narrate for a purpose</b>																								
1.X.X - Content	19	0	0	5	0	5	32	26	21	11	0	4.79	0	1	1	10	9	36	18	21	3	1	4.35	0.44
2.X.X - Structure	19	0	0	5	0	11	37	26	11	11	0	4.53	0	1	2	10	10	37	17	19	3	1	4.27	0.26
3.X.X - Convention	19	0	0	0	0	11	37	26	16	11	0	4.79	0	0	0	12	10	36	18	19	3	1	4.33	0.46
<b>Persuade</b>																								
1.X.X - Content	21	0	0	0	5	5	67	14	10	0	0	4.19	0	1	1	8	8	33	19	21	5	3	4.50	-0.31
2.X.X - Structure	21	0	0	0	10	10	62	5	14	0	0	4.05	0	2	2	9	10	33	19	20	5	2	4.42	-0.37
3.X.X - Convention	21	0	0	0	10	5	57	19	10	0	0	4.14	0	0	0	11	10	32	19	20	5	2	4.50	-0.36

MULTIPLE CHOICE	No. Items	SCHOOL						STATE						School
		No. Observations	Percents			Mean	Std. Err.	No. Observations	Percents			Mean	-State Mean	
		Correct	Incorrect	Omit/Mult				Correct	Incorrect	Omit/Mult				
4.x.x - Writing Process	52	74	26	0	0.74	0.02	585,936	73	27	0	0.73	0.01		
4.10.x - Revising	16	63	37	0	0.63	0.04	130,317	66	34	0	0.66	-0.03		
4.11.x - Editing	36	77	23	0	0.77	0.02	455,619	75	24	0	0.75	0.02		