



Interim Performance Report

In March 2009, the Kentucky General Assembly passed Senate Bill 1 (SB1) that was subsequently signed into law by the Governor. SB1 calls for a significant overhaul of the state's assessment and accountability system. The new assessment system begins in the spring of 2012. The school years of 2008-2009, 2009-2010 and 2010-2011 are described in SB1 as an interim period. This three-year period allows Kentucky to develop the new assessment system and to carry on state and federal testing requirements.

The Interim Performance Report includes the Kentucky Core Content Test (KCCT) in Reading (grades 3-8 and 10), Mathematics (grades 3-8 and 11), Science (grades 4, 7 and 11), Social Studies (grades 5, 8 and 11) and Writing On-Demand (grades 5, 8 and 12). The KCCT is based on the Kentucky Core Content for Assessment (Version 4.1) and contains multiple choice and open response questions. The Writing On-Demand test uses writing prompts that require students to craft a piece of writing in a 60 minute period.

The KCCT is developed under the direction of content advisory committees of Kentucky educators who draft, review and select test questions. All test items are reviewed by a bias review committee to enhance the fairness of items for all Kentucky students.

The KCCT continues to fulfill the requirements of the federal statute known as the No Child Left Behind Act of 2001. A separate accountability report for No Child Left Behind (NCLB) is published by the Kentucky Department of Education.

The Interim Performance Report focuses entirely on the five state-required content areas and provides data for schools or districts. The data in this report is not used directly for state accountability; although, these results can fulfill the requirements of Senate Bill 168 from 2002 and may be used by schools or districts for their own local accountability needs.

Performance standards are based on descriptions of Novice, Apprentice, Proficient and Distinguished (NAPD) student performance levels specific to the content area and grade being assessed. The performance standards, in conjunction with Kentucky's Core Content for Assessment, should allow instruction to better focus on the content area to be taught and on how well students must demonstrate achievement in each content area.

Reporting Changes for 2009

Based on SB1, Kentucky will not be reporting state accountability and academic indices as in the past. The report does have several familiar pages with performance level (NAPD) trend, core content and disaggregation data per content area. Districts and schools will still see distributions of how students scored in the Novice (with sublevels), Apprentice (with sublevels), Proficient and Distinguished performance levels.

Confidentiality Changes

Due to federal regulations around the Family Education Rights and Privacy Act (FERPA), the numbers of students have been removed. Though there is a need to report as much data as possible, there is also a paramount need to maintain the confidential aspects of individual scores. When scores are reported in what is commonly called "small cells" where very few students may be categorized, there is the possibility of revealing individual scores when numbers are reported. Numbers are reported to each district in a confidential report that accompanies the public Interim Performance Report.

2008-2009

INTERIM PERFORMANCE REPORT

School: Shopville Elementary School

District: Pulaski County

Code: 501440

Grade: PRIMARY-05

CONTENTS OF THIS REPORT

Introduction	1
Academic Trend Data	
Reading Results	2-8
Mathematics Results	9-15
Science Results	16-18
Social Studies Results	19-21
Writing Results	22-24

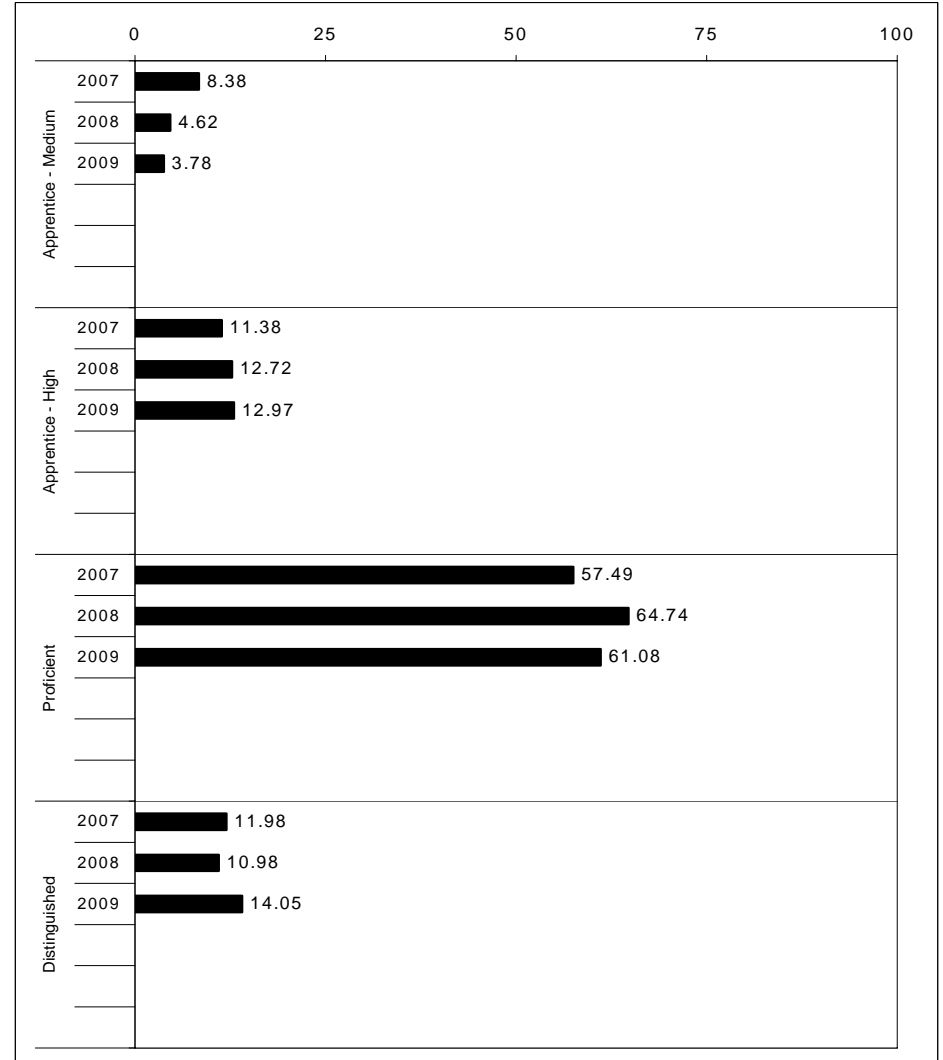
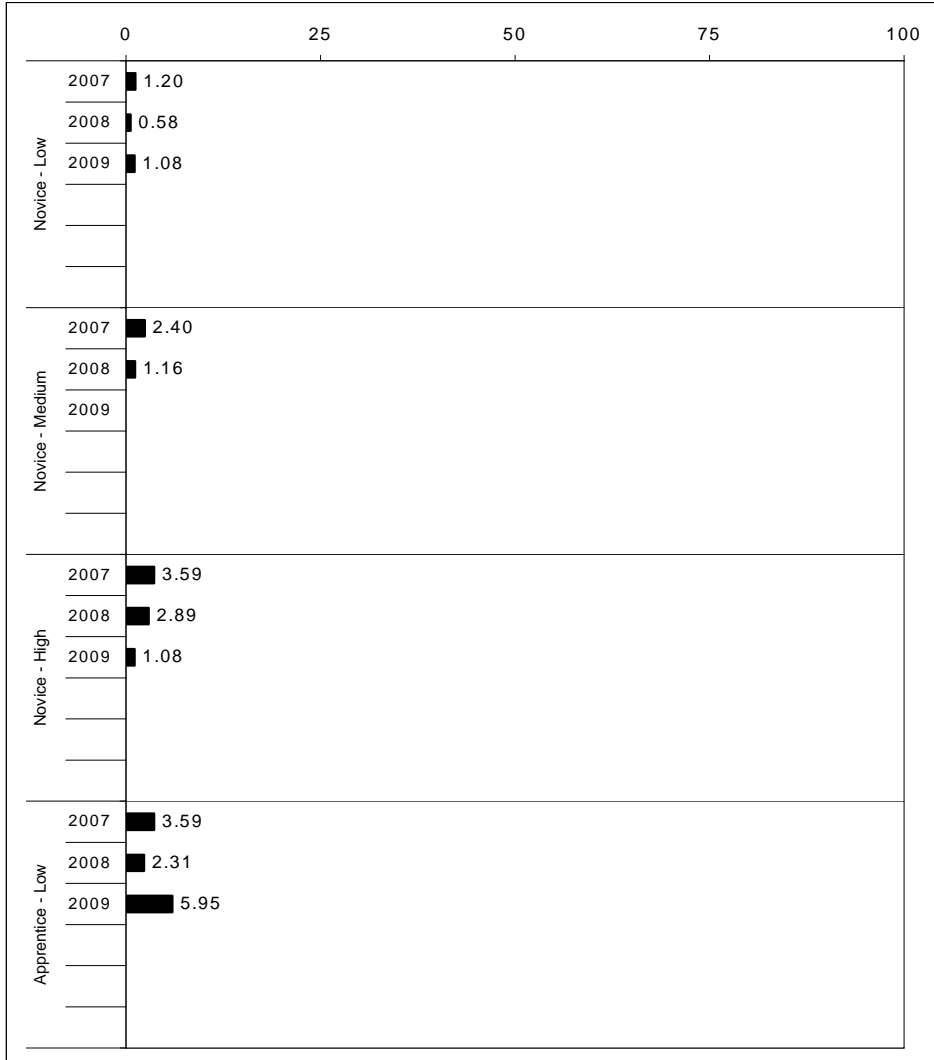
For more information, refer to the 2009 Interim Assessment Interpretative Guide on the Kentucky Department of Education Web site (www.education.ky.gov).





2008-2009
INTERIM PERFORMANCE REPORT
READING TREND DATA
Performance Level Percents

School: Shopville Elementary School
 District: Pulaski County
 Code: 501440
 Grade: ELEMENTARY



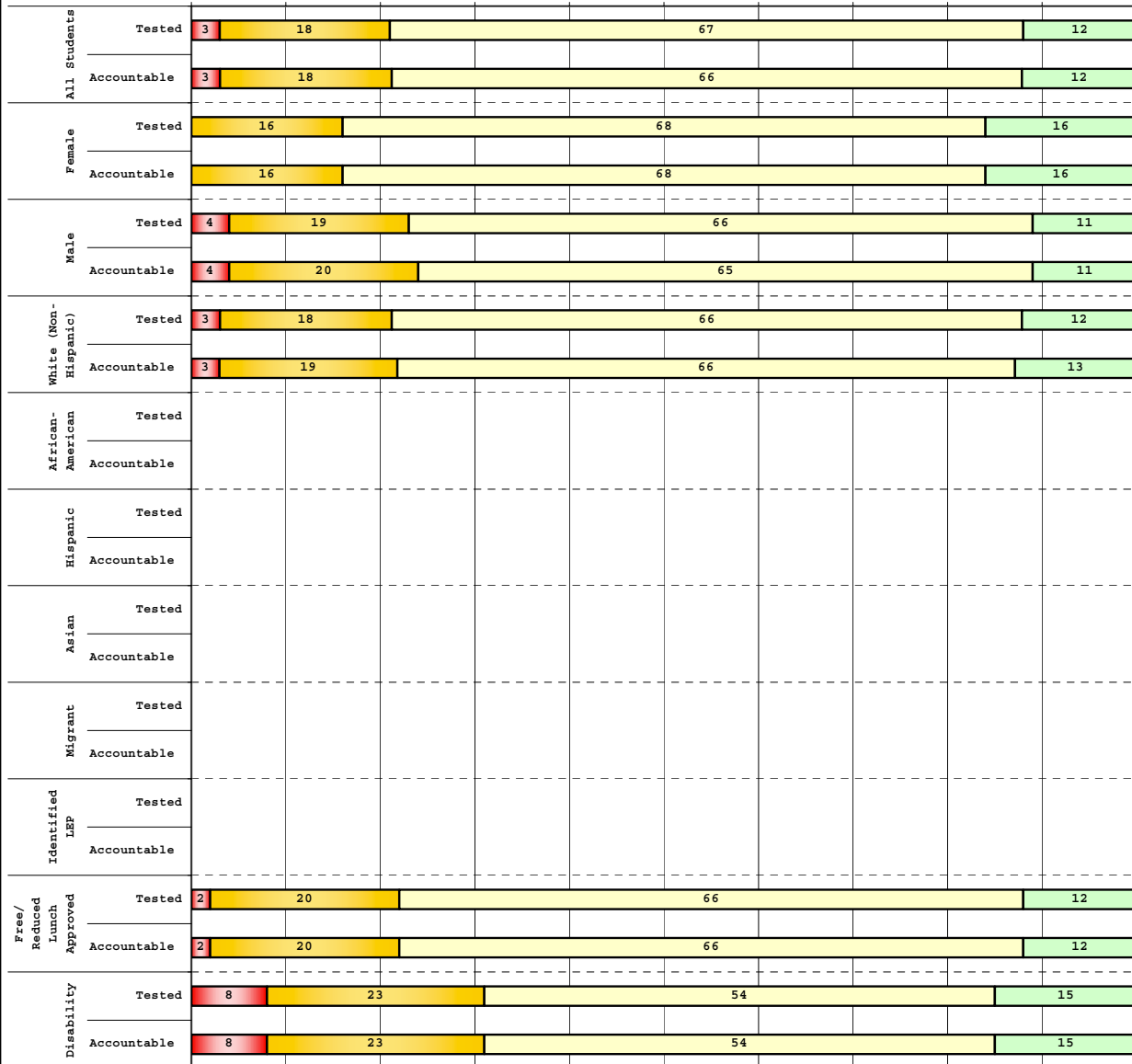
The horizontal bar represents the percent of students scoring at a performance level within a particular year. Percentages may not sum to 100% due to rounding.



**2008-2009
INTERIM PERFORMANCE REPORT
READING DISAGGREGATION
Performance Level Percents**

School: Shopville Elementary School
District: Pulaski County
Code: 501440
Grade: 03

0% 10% 20% 30% 40% 50% 60% 70% 80% 90% 100%



Tested Students

	N%	A%	P%	D%	P+D%
Total	3	18	67	12	78.79
Female	0	16	68	16	84.21
Male	4	19	66	11	76.60
White (Non-Hispanic)	3	18	66	12	78.46
African-American					
Hispanic					
Asian					
Other	Unreportable*				
Title I	3	18	67	12	78.79
Migrant					
Identified LEP					
Extended Sch Services					
Gifted/Talented	0	0	67	33	100.00
F/R Lunch Approved	2	20	66	12	78.05
Vocational/2 Credits					
Disability	8	23	54	15	69.23
Alternate Assessment	Unreportable*				
NCLB Accountable Students					
Total	3	18	66	12	78.46
Female	0	16	68	16	84.21
Male	4	20	65	11	76.09
White (Non-Hispanic)	3	19	66	13	78.13
African-American					
Hispanic					
Asian					
Other	Unreportable*				
Title I	3	18	66	12	78.46
Migrant					
Identified LEP					
Extended Sch Services					
Gifted/Talented	0	0	67	33	100.00
F/R Lunch Approved	2	20	66	12	78.05
Vocational/2 Credits					
Disability	8	23	54	15	69.23
Alternate Assessment	Unreportable*				

■ Novice
■ Apprentice
■ Proficient
■ Distinguished

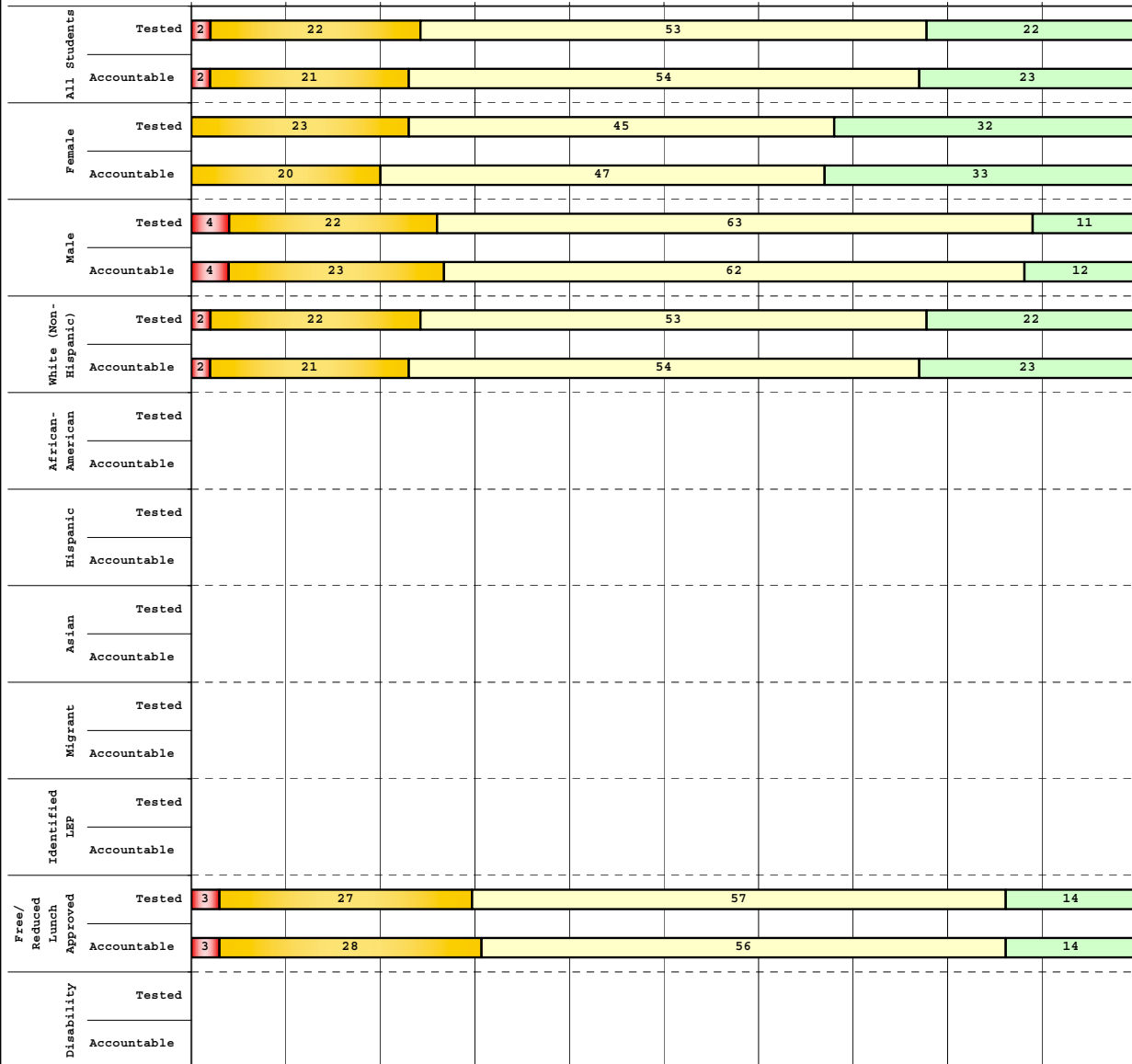
Percentage may not sum to 100% due to rounding. 'Unreportable*' indicates subpopulations with fewer than 10 students or subpopulations where all students score at the same performance level.



2008-2009
INTERIM PERFORMANCE REPORT
READING DISAGGREGATION
Performance Level Percents

School: Shopville Elementary School
 District: Pulaski County
 Code: 501440
 Grade: 04

0% 10% 20% 30% 40% 50% 60% 70% 80% 90% 100%



	N%	A%	P%	D%	P+D%
Tested Students					
Total	2	22	53	22	75.86
Female	0	23	45	32	77.42
Male	4	22	63	11	74.07
White (Non-Hispanic)	2	22	53	22	75.86
African-American					
Hispanic					
Asian					
Other					
Title I	2	22	53	22	75.86
Migrant					
Identified LEP					
Extended Sch Services					
Gifted/Talented	0	0	58	42	100.00
F/R Lunch Approved	3	27	57	14	70.27
Vocational/2 Credits					
Disability	Unreportable*				
Alternate Assessment					
NCLB Accountable Students					
Total	2	21	54	23	76.79
Female	0	20	47	33	80.00
Male	4	23	62	12	73.08
White (Non-Hispanic)	2	21	54	23	76.79
African-American					
Hispanic					
Asian					
Other					
Title I	2	21	54	23	76.79
Migrant					
Identified LEP					
Extended Sch Services					
Gifted/Talented	0	0	58	42	100.00
F/R Lunch Approved	3	28	56	14	69.44
Vocational/2 Credits					
Disability	Unreportable*				
Alternate Assessment					

■ Novice
■ Apprentice
■ Proficient
■ Distinguished

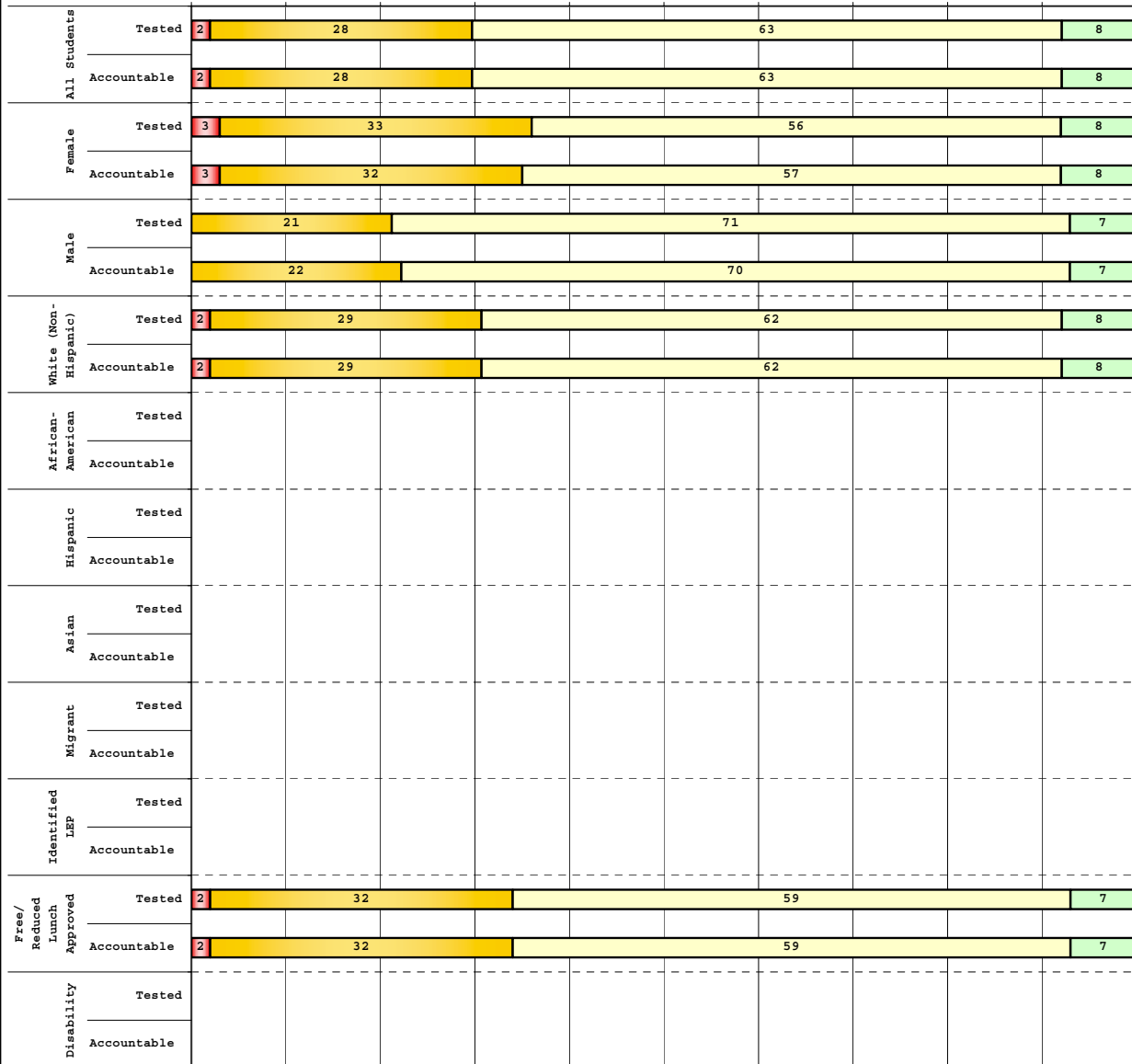
Percentage may not sum to 100% due to rounding. 'Unreportable*' indicates subpopulations with fewer than 10 students or subpopulations where all students score at the same performance level.



**2008-2009
INTERIM PERFORMANCE REPORT
READING DISAGGREGATION
Performance Level Percents**

School: Shopville Elementary School
District: Pulaski County
Code: 501440
Grade: 05

0% 10% 20% 30% 40% 50% 60% 70% 80% 90% 100%



		N%	A%	P%	D%	P+D%
Tested Students						
Total		2	28	63	8	70.31
Female		3	33	56	8	63.89
Male		0	21	71	7	78.57
White (Non-Hispanic)		2	29	62	8	69.84
African-American						
Hispanic						
Asian						
Other	Unreportable*					
Title I		2	28	63	8	70.31
Migrant						
Identified LEP						
Extended Sch Services	Unreportable*					
Gifted/Talented		0	6	78	17	94.44
F/R Lunch Approved		2	32	59	7	65.91
Vocational/2 Credits						
Disability	Unreportable*					
Alternate Assessment						
NCLB Accountable Students						
Total		2	28	63	8	70.31
Female		3	32	57	8	64.86
Male		0	22	70	7	77.78
White (Non-Hispanic)		2	29	62	8	69.84
African-American						
Hispanic						
Asian						
Other	Unreportable*					
Title I		2	28	63	8	70.31
Migrant						
Identified LEP						
Extended Sch Services	Unreportable*					
Gifted/Talented		0	6	78	17	94.44
F/R Lunch Approved		2	32	59	7	65.91
Vocational/2 Credits						
Disability	Unreportable*					
Alternate Assessment						

■ Novice
■ Apprentice
■ Proficient
■ Distinguished

Percentage may not sum to 100% due to rounding. 'Unreportable*' indicates subpopulations with fewer than 10 students or subpopulations where all students score at the same performance level.



2008-2009
INTERIM PERFORMANCE REPORT
READING CORE CONTENT

School: Shopville Elementary School
 District: Pulaski County
 Code: 501440
 Grade: 03

	No. Items	No. Observations	SCHOOL								Std. Err.	No. Observations	STATE								School -State Mean
			B	0	1	2	3	4	Mean	B			0	1	2	3	4	Mean			
OPEN RESPONSE																					
2.0.x - Developing Understanding	2	128	0	10	34	47	8	2	1.6	0.1	100,212	0	10	30	44	14	2	1.7	-0.1		
3.0.x - Interpreting Text	2	128	0	10	34	47	8	2	1.6	0.1	100,212	0	10	30	44	14	2	1.7	-0.1		
MULTIPLE CHOICE																					
1.0.x - Forming a Foundation	32	503	84	16	0				0.84	0.02	392,589	83	17	0				0.83	0.01		
2.0.x - Developing Understanding	89	1,272	81	19	0				0.81	0.01	993,477	80	20	0				0.80	0.01		
3.0.x - Interpreting Text	31	591	80	20	0				0.80	0.02	468,115	77	23	0				0.77	0.03		
5.0.x - Critical Stance	15	271	79	21	0				0.79	0.02	208,359	79	21	0				0.79	0.00		



2008-2009
INTERIM PERFORMANCE REPORT
READING CORE CONTENT

School: Shopville Elementary School
 District: Pulaski County
 Code: 501440
 Grade: 04

	No. Items	No. Observations	SCHOOL								Std. Err.	No. Observations	STATE								School -State Mean
			B	0	1	2	3	4	Mean	B			0	1	2	3	4	Mean			
OPEN RESPONSE																					
2.0.x - Developing Understanding	5	93	0	3	20	57	17	2	1.9	0.1	81,849	0	3	24	52	18	3	1.9	0.0		
3.0.x - Interpreting Text	6	148	0	4	15	54	22	5	2.1	0.1	131,199	0	4	22	45	23	5	2.0	0.1		
MULTIPLE CHOICE																					
1.0.x - Forming a Foundation	34	463	77	23	0				0.77	0.02	401,452	72	28	0				0.71	0.06		
2.0.x - Developing Understanding	76	975	77	24	0				0.77	0.01	868,422	73	27	0				0.73	0.04		
3.0.x - Interpreting Text	29	324	81	19	0				0.81	0.02	278,648	79	21	0				0.79	0.02		
5.0.x - Critical Stance	9	176	76	24	0				0.76	0.03	155,704	74	26	0				0.74	0.02		



2008-2009
INTERIM PERFORMANCE REPORT
READING CORE CONTENT

School: Shopville Elementary School
 District: Pulaski County
 Code: 501440
 Grade: 05

	No. Items	No. Observations	SCHOOL								Std. Err.	No. Observations	STATE								School -State Mean
			B	0	1	2	3	4	Mean	B			0	1	2	3	4	Mean			
OPEN RESPONSE																					
2.0.x - Developing Understanding	6	117	0	3	26	55	15	1	1.8	0.1	89,507	0	5	23	48	20	5	2.0	-0.2		
3.0.x - Interpreting Text	6	170	0	4	26	52	18	1	1.9	0.1	130,403	0	5	21	50	19	4	2.0	-0.1		
MULTIPLE CHOICE																					
1.0.x - Forming a Foundation	28	349	80	20	0				0.80	0.02	268,187	74	26	0				0.74	0.06		
2.0.x - Developing Understanding	71	1,083	82	18	0				0.82	0.01	823,068	80	20	0				0.80	0.02		
3.0.x - Interpreting Text	27	446	85	15	0				0.85	0.02	341,653	81	19	0				0.81	0.04		
5.0.x - Critical Stance	17	395	79	21	0				0.78	0.02	300,671	75	25	0				0.75	0.03		



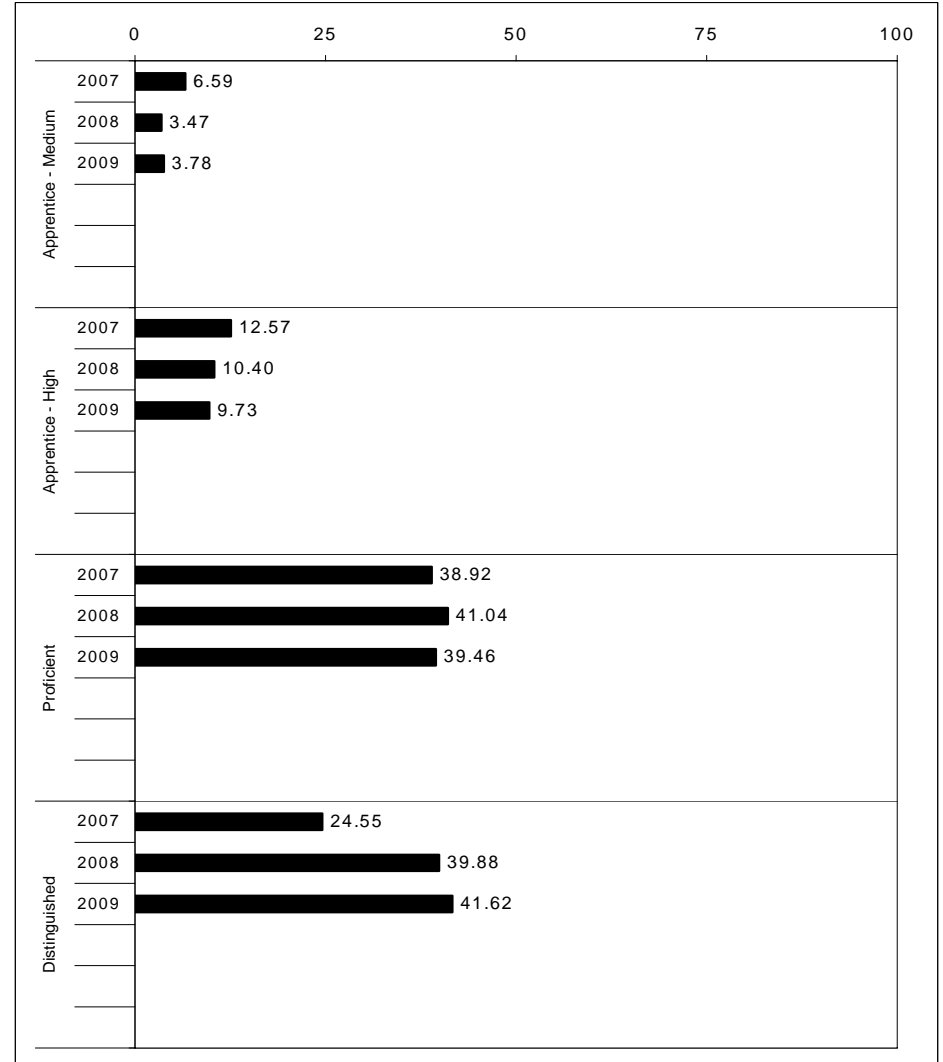
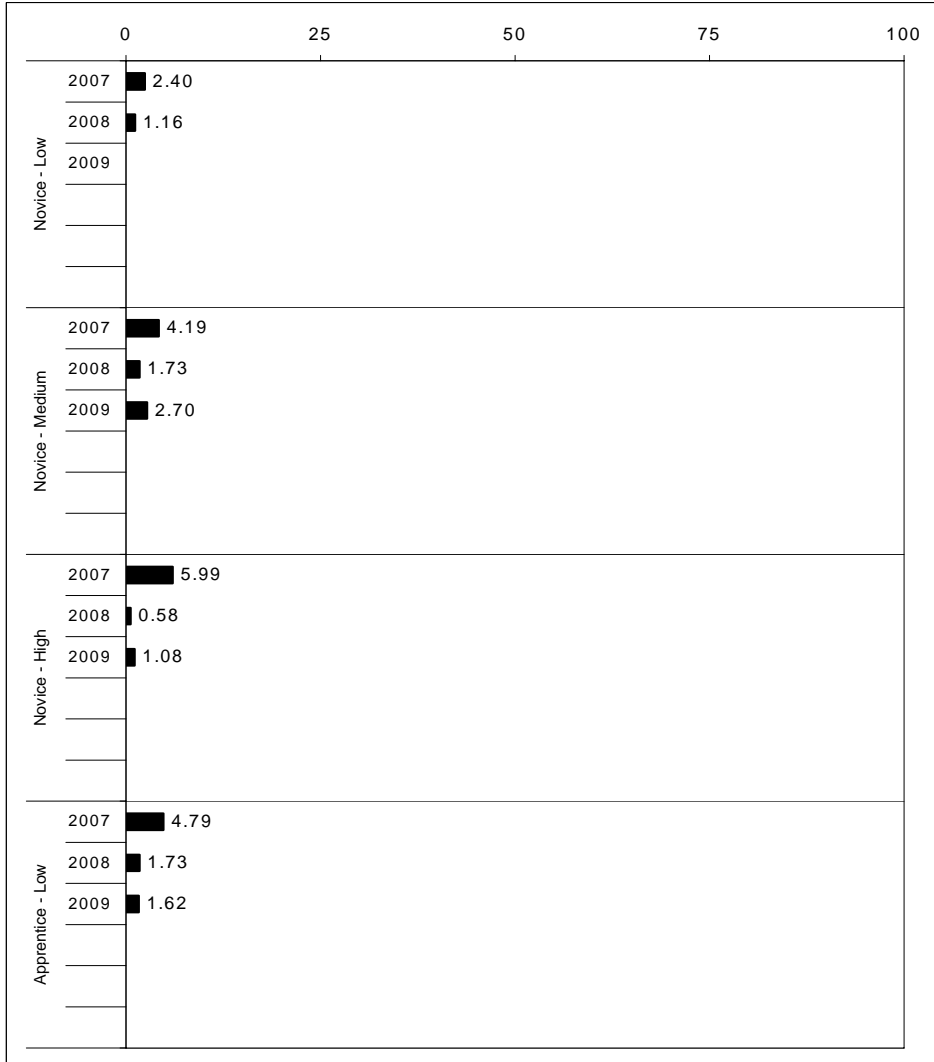
2008-2009
INTERIM PERFORMANCE REPORT
MATHEMATICS TREND DATA
Performance Level Percents

School: Shopville Elementary School

District: Pulaski County

Code: 501440

Grade: ELEMENTARY



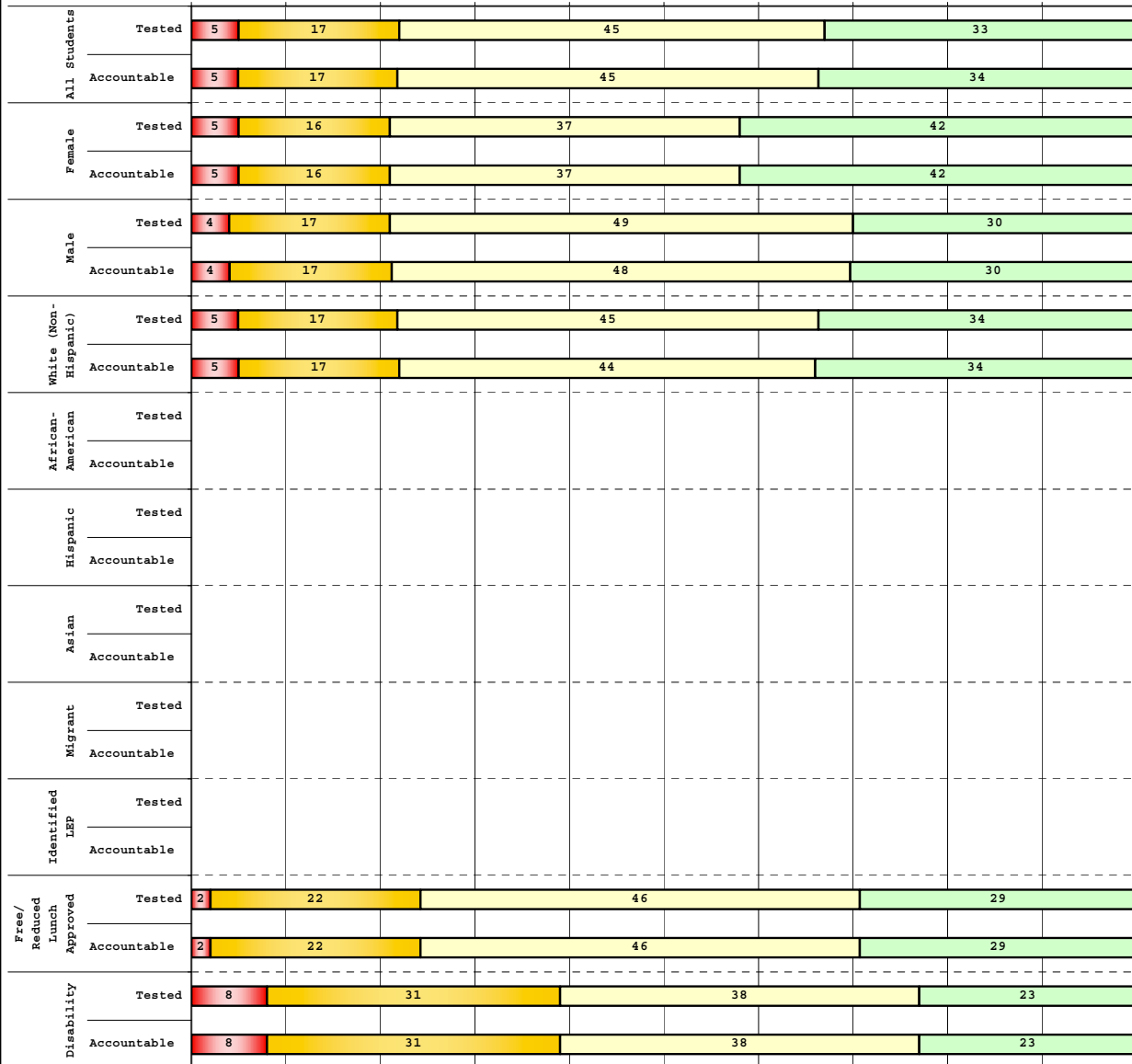
The horizontal bar represents the percent of students scoring at a performance level within a particular year. Percentages may not sum to 100% due to rounding.



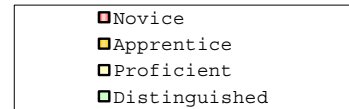
2008-2009
INTERIM PERFORMANCE REPORT
MATHEMATICS DISAGGREGATION
Performance Level Percents

School: Shopville Elementary School
 District: Pulaski County
 Code: 501440
 Grade: 03

0% 10% 20% 30% 40% 50% 60% 70% 80% 90% 100%



	N%	A%	P%	D%	P+D%
Tested Students					
Total	5	17	45	33	78.79
Female	5	16	37	42	78.95
Male	4	17	49	30	78.72
White (Non-Hispanic)	5	17	45	34	78.46
African-American					
Hispanic					
Asian					
Other	Unreportable*				
Title I	5	17	45	33	78.79
Migrant					
Identified LEP					
Extended Sch Services					
Gifted/Talented	0	0	17	83	100.00
F/R Lunch Approved	2	22	46	29	75.61
Vocational/2 Credits					
Disability	8	31	38	23	61.54
Alternate Assessment	Unreportable*				
NCLB Accountable Students					
Total	5	17	45	34	78.46
Female	5	16	37	42	78.95
Male	4	17	48	30	78.26
White (Non-Hispanic)	5	17	44	34	78.13
African-American					
Hispanic					
Asian					
Other	Unreportable*				
Title I	5	17	45	34	78.46
Migrant					
Identified LEP					
Extended Sch Services					
Gifted/Talented	0	0	17	83	100.00
F/R Lunch Approved	2	22	46	29	75.61
Vocational/2 Credits					
Disability	8	31	38	23	61.54
Alternate Assessment	Unreportable*				



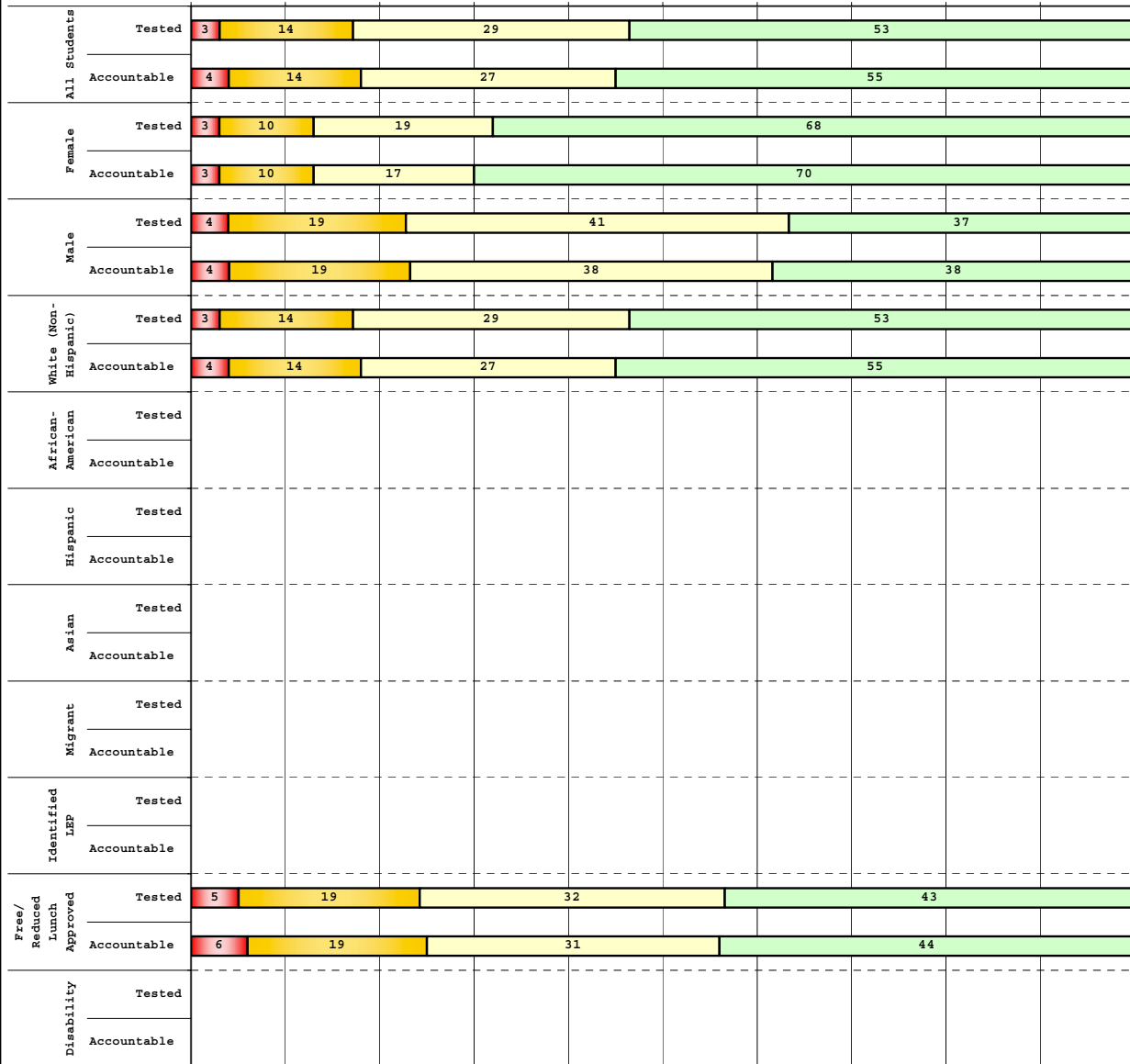
Percentage may not sum to 100% due to rounding. 'Unreportable*' indicates subpopulations with fewer than 10 students or subpopulations where all students score at the same performance level.



2008-2009
INTERIM PERFORMANCE REPORT
MATHEMATICS DISAGGREGATION
Performance Level Percents

School: Shopville Elementary School
 District: Pulaski County
 Code: 501440
 Grade: 04

0% 10% 20% 30% 40% 50% 60% 70% 80% 90% 100%



	N%	A%	P%	D%	P+D%
Tested Students					
Total	3	14	29	53	82.76
Female	3	10	19	68	87.10
Male	4	19	41	37	77.78
White (Non-Hispanic)	3	14	29	53	82.76
African-American					
Hispanic					
Asian					
Other					
Title I	3	14	29	53	82.76
Migrant					
Identified LEP					
Extended Sch Services					
Gifted/Talented	0	0	8	92	100.00
F/R Lunch Approved	5	19	32	43	75.68
Vocational/2 Credits					
Disability	Unreportable*				
Alternate Assessment					
NCLB Accountable Students					
Total	4	14	27	55	82.14
Female	3	10	17	70	86.67
Male	4	19	38	38	76.92
White (Non-Hispanic)	4	14	27	55	82.14
African-American					
Hispanic					
Asian					
Other					
Title I	4	14	27	55	82.14
Migrant					
Identified LEP					
Extended Sch Services					
Gifted/Talented	0	0	8	92	100.00
F/R Lunch Approved	6	19	31	44	75.00
Vocational/2 Credits					
Disability	Unreportable*				
Alternate Assessment					

■ Novice
■ Apprentice
■ Proficient
■ Distinguished

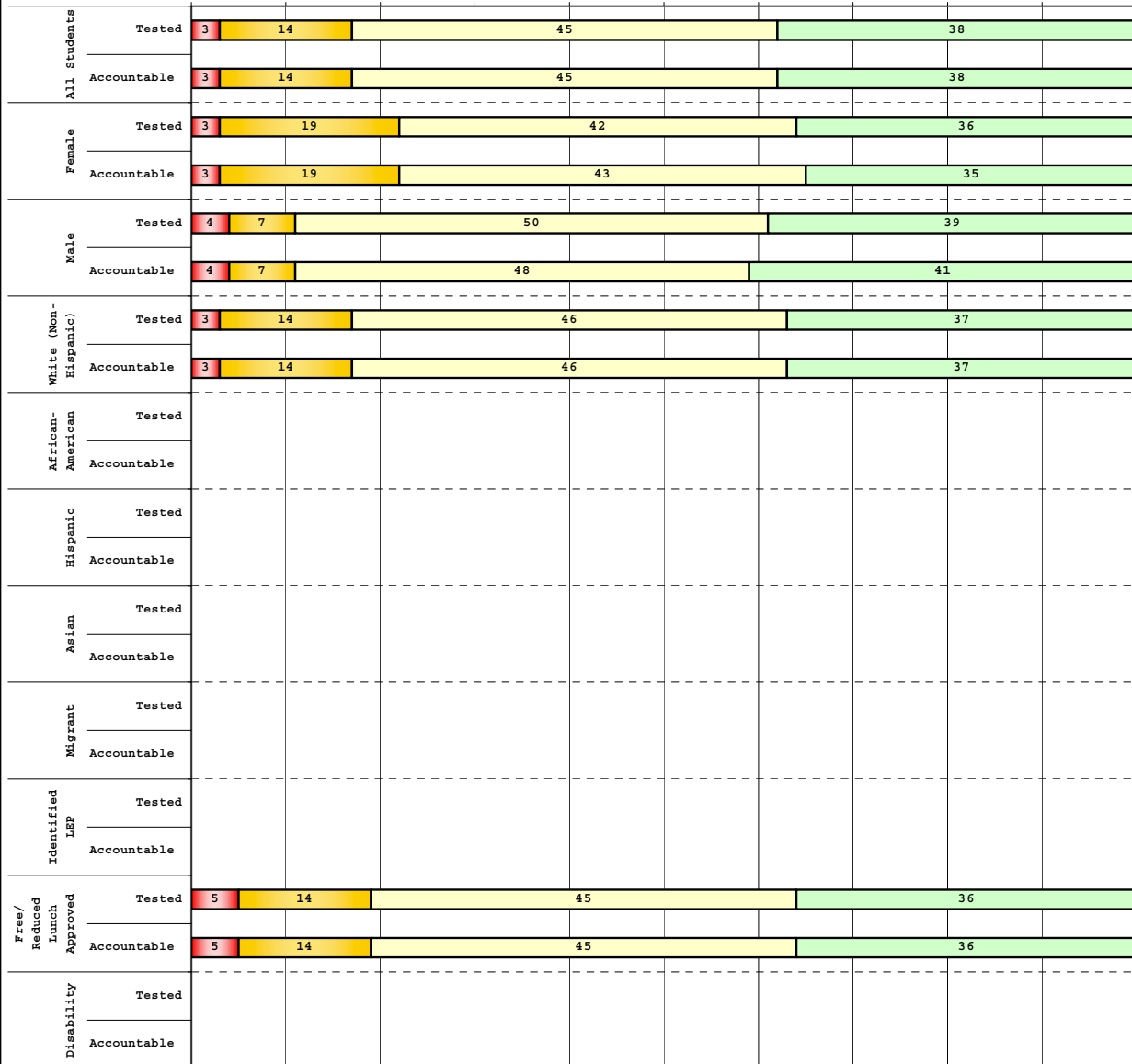
Percentage may not sum to 100% due to rounding. 'Unreportable*' indicates subpopulations with fewer than 10 students or subpopulations where all students score at the same performance level.



2008-2009
INTERIM PERFORMANCE REPORT
MATHEMATICS DISAGGREGATION
Performance Level Percents

School: Shopville Elementary School
 District: Pulaski County
 Code: 501440
 Grade: 05

0% 10% 20% 30% 40% 50% 60% 70% 80% 90% 100%



		N%	A%	P%	D%	P+D%
Tested Students						
Total		3	14	45	38	82.81
Female		3	19	42	36	77.78
Male		4	7	50	39	89.29
White (Non-Hispanic)		3	14	46	37	82.54
African-American						
Hispanic						
Asian						
Other	Unreportable*					
Title I		3	14	45	38	82.81
Migrant						
Identified LEP						
Extended Sch Services	Unreportable*					
Gifted/Talented		0	0	28	72	100.00
F/R Lunch Approved		5	14	45	36	81.82
Vocational/2 Credits						
Disability	Unreportable*					
Alternate Assessment						
NCLB Accountable Students						
Total		3	14	45	38	82.81
Female		3	19	43	35	78.38
Male		4	7	48	41	88.89
White (Non-Hispanic)		3	14	46	37	82.54
African-American						
Hispanic						
Asian						
Other	Unreportable*					
Title I		3	14	45	38	82.81
Migrant						
Identified LEP						
Extended Sch Services	Unreportable*					
Gifted/Talented		0	0	28	72	100.00
F/R Lunch Approved		5	14	45	36	81.82
Vocational/2 Credits						
Disability	Unreportable*					
Alternate Assessment						

■ Novice
■ Apprentice
■ Proficient
■ Distinguished

Percentage may not sum to 100% due to rounding. 'Unreportable*' indicates subpopulations with fewer than 10 students or subpopulations where all students score at the same performance level.



2008-2009
INTERIM PERFORMANCE REPORT
MATHEMATICS CORE CONTENT

School: Shopville Elementary School
 District: Pulaski County
 Code: 501440
 Grade: 03

	No. Items	No. Observations	SCHOOL							Mean	Std. Err.	No. Observations	STATE							Mean	School -State Mean
			B	0	1	2	3	4	Percents				B	0	1	2	3	4	Percents		
OPEN RESPONSE																					
1.x.x - Number Prop Oper	5	161	0	25	42	19	6	8	1.3	0.1	125,243	0	21	35	26	10	8	1.5	-0.2		
2.x.x - Measurement	1	11	0	27	0	36	9	27	2.1	0.4	8,325	0	25	5	30	14	25	2.1	0.0		
3.x.x - Geometry	2	21	0	10	14	43	10	24	2.2	0.3	16,777	0	8	24	35	13	20	2.1	0.1		
4.x.x - Data Analysis & Probabilit	1	64	0	5	20	27	23	25	2.4	0.2	50,106	0	9	13	19	27	32	2.6	-0.2		
5.x.x - Algebraic Thinking	2	74	0	4	18	27	27	24	2.5	0.2	58,404	0	9	14	19	28	31	2.6	-0.1		
MULTIPLE CHOICE																					
1.x.x - Number Prop Oper	32	1,034	78	23	0				0.77	0.01	810,106	74	26	0				0.74	0.03		
2.x.x - Measurement	7	235	85	15	0				0.85	0.03	183,647	81	18	0				0.81	0.04		
3.x.x - Geometry	18	512	90	10	0				0.90	0.02	400,848	85	15	0				0.85	0.05		
4.x.x - Data Analysis & Probabilit	8	246	73	27	0				0.73	0.03	192,126	69	31	0				0.69	0.04		
5.x.x - Algebraic Thinking	11	277	84	16	0				0.84	0.02	217,089	78	22	0				0.78	0.06		



2008-2009
INTERIM PERFORMANCE REPORT
MATHEMATICS CORE CONTENT

School: Shopville Elementary School
 District: Pulaski County
 Code: 501440
 Grade: 04

	No. Items	No. Observations	SCHOOL								STATE								School -State Mean
			Percents						Mean	Std. Err.	Percents						Mean		
			B	0	1	2	3	4					No. Observations	B	0	1		2	3
OPEN RESPONSE																			
1.x.x - Number Prop Oper	4	82	1	12	24	28	13	21	2.0	0.1	73,656	0	17	24	29	19	12	1.9	0.1
2.x.x - Measurement	1	7							***		8,195	0	43	13	10	20	13	1.5	
3.x.x - Geometry	2	66	0	2	6	15	21	56	3.2	0.2	57,352	0	11	20	17	19	33	2.4	0.8
4.x.x - Data Analysis & Probabilit	1	11	0	9	36	18	36	0	1.8	0.3	8,152	0	5	36	29	23	6	1.9	-0.1
5.x.x - Algebraic Thinking	2	65	0	5	12	26	43	14	2.5	0.1	57,508	0	5	27	32	25	11	2.1	0.4
MULTIPLE CHOICE																			
			Correct	Incorrect	Omit/Mult							Correct	Incorrect	Omit/Mult					
1.x.x - Number Prop Oper	31	755	77	23	0				0.77	0.02	664,194	67	33	0				0.67	0.10
2.x.x - Measurement	7	156	69	31	0				0.69	0.04	139,170	62	38	0				0.62	0.07
3.x.x - Geometry	14	321	84	16	0				0.84	0.02	278,460	77	23	0				0.77	0.07
4.x.x - Data Analysis & Probabilit	12	342	77	23	0				0.77	0.02	303,394	71	29	0				0.71	0.06
5.x.x - Algebraic Thinking	11	290	81	19	0				0.81	0.03	253,829	69	31	0				0.69	0.12



2008-2009
INTERIM PERFORMANCE REPORT
MATHEMATICS CORE CONTENT

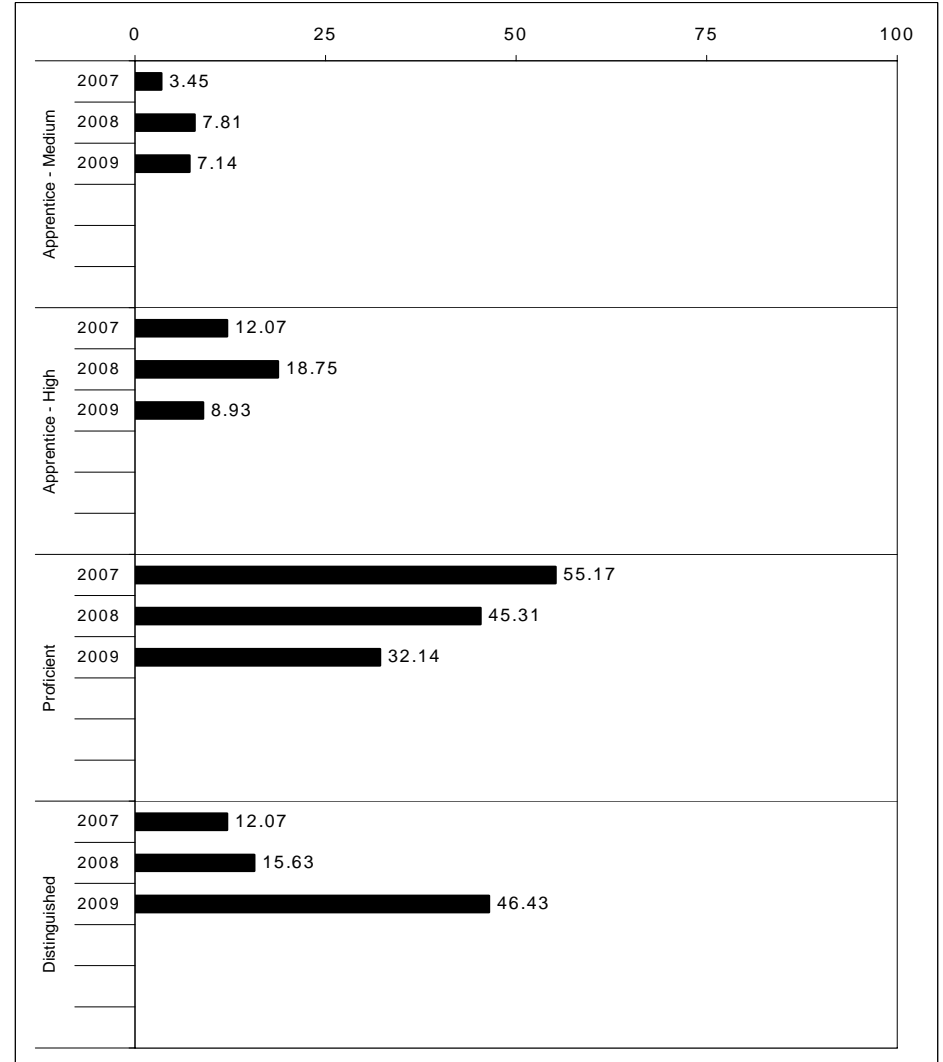
School: Shopville Elementary School
 District: Pulaski County
 Code: 501440
 Grade: 05

	No. Items	No. Observations	SCHOOL								STATE								School -State Mean
			Percents						Mean	Std. Err.	Percents						Mean		
			B	0	1	2	3	4					No. Observations	B	0	1		2	3
OPEN RESPONSE																			
1.x.x - Number Prop Oper	4	95	0	5	13	22	26	34	2.7	0.1	73,199	0	8	20	18	25	29	2.5	0.2
2.x.x - Measurement	1	11	0	18	64	9	0	9	1.2	0.4	8,380	0	37	30	13	10	11	1.3	-0.1
3.x.x - Geometry	2	75	0	8	23	33	25	11	2.1	0.1	56,900	0	6	24	30	26	14	2.2	-0.1
4.x.x - Data Analysis & Probabilit	1	64	0	5	19	17	19	41	2.7	0.2	48,828	0	15	18	15	17	35	2.4	0.3
5.x.x - Algebraic Thinking	1	11	0	9	0	36	0	55	2.9	0.4	8,005	0	13	15	20	17	35	2.5	0.4
MULTIPLE CHOICE																			
1.x.x - Number Prop Oper	29	843	Correct	Incorrect	Omit/Mult				0.74	0.02	643,144	Correct	Incorrect	Omit/Mult				0.63	0.11
2.x.x - Measurement	9	203	68	32	0				0.68	0.03	154,489	62	38	0				0.62	0.06
3.x.x - Geometry	14	362	86	14	0				0.86	0.02	276,516	78	22	0				0.78	0.08
4.x.x - Data Analysis & Probabilit	11	331	73	27	0				0.73	0.03	252,212	64	36	0				0.64	0.09
5.x.x - Algebraic Thinking	10	320	74	26	0				0.74	0.03	244,140	65	35	0				0.65	0.09



2008-2009
INTERIM PERFORMANCE REPORT
SCIENCE TREND DATA
Performance Level Percents

School: Shopville Elementary School
 District: Pulaski County
 Code: 501440
 Grade: 04



The horizontal bar represents the percent of students scoring at a performance level within a particular year. Percentages may not sum to 100% due to rounding.



**2008-2009
INTERIM PERFORMANCE REPORT
SCIENCE DISAGGREGATION
Performance Level Percents**

School: Shopville Elementary School
District: Pulaski County
Code: 501440
Grade: 04

		0%	10%	20%	30%	40%	50%	60%	70%	80%	90%	100%	N%	A%	P%	D%	P+D%	
All Students	Tested	2	21	33	45													
	100 Days	2	20	32	46													
Female	Tested	3	23	29	45													
	100 Days	3	20	30	47													
Male	Tested		19	37	44													
	100 Days		19	35	46													
White (Non-Hispanic)	Tested	2	21	33	45													
	100 Days	2	20	32	46													
African-American	Tested																	
	100 Days																	
Hispanic	Tested																	
	100 Days																	
Asian	Tested																	
	100 Days																	
Migrant	Tested																	
	100 Days																	
Identified LEP	Tested																	
	100 Days																	
Free/Reduced Lunch Approved	Tested	3	24	32	41													
	100 Days	3	25	31	42													
Disability	Tested																	
	100 Days																	

Tested Students		N%	A%	P%	D%	P+D%
Total		2	21	33	45	77.59
Female		3	23	29	45	74.19
Male		0	19	37	44	81.48
White (Non-Hispanic)		2	21	33	45	77.59
African-American						
Hispanic						
Asian						
Other						
Title I		2	21	33	45	77.59
Migrant						
Identified LEP						
Extended Sch Services						
Gifted/Talented		0	4	25	71	95.83
F/R Lunch Approved		3	24	32	41	72.97
Vocational/2 Credits						
Disability	Unreportable*					
Alternate Assessment						
100 Day Students						
Total		2	20	32	46	78.57
Female		3	20	30	47	76.67
Male		0	19	35	46	80.77
White (Non-Hispanic)		2	20	32	46	78.57
African-American						
Hispanic						
Asian						
Other						
Title I		2	20	32	46	78.57
Migrant						
Identified LEP						
Extended Sch Services						
Gifted/Talented		0	4	25	71	95.83
F/R Lunch Approved		3	25	31	42	72.22
Vocational/2 Credits						
Disability	Unreportable*					
Alternate Assessment						

■ Novice
■ Apprentice
■ Proficient
■ Distinguished

Percentage may not sum to 100% due to rounding. 'Unreportable*' indicates subpopulations with fewer than 10 students or subpopulations where all students score at the same performance level.



2008-2009
INTERIM PERFORMANCE REPORT
SCIENCE CORE CONTENT

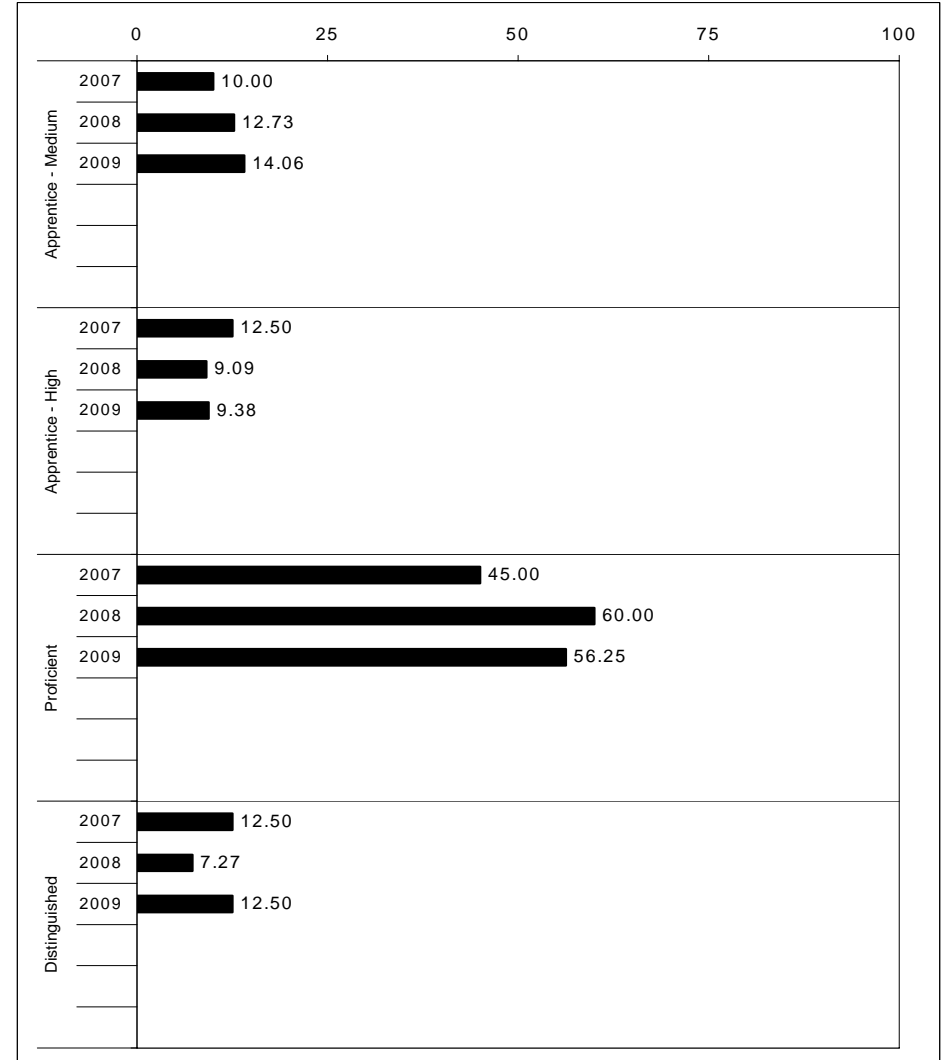
School: Shopville Elementary School
 District: Pulaski County
 Code: 501440
 Grade: 04

	No. Items	No. Observations	SCHOOL								STATE								School -State Mean	
			Percents						Mean	Std. Err.	No. Observations	Percents						Mean		
			B	0	1	2	3	4							B	0	1		2	3
OPEN RESPONSE																				
1.x.x - Physical Science	2	21	0	10	14	43	19	14	2.1	0.2	16,337	0	17	19	42	17	5	1.7	0.4	
2.x.x - Earth Space Science	3	74	0	9	19	28	42	1	2.1	0.1	65,658	0	12	22	35	26	4	1.9	0.2	
3.x.x - Biological Science	3	73	0	1	10	23	59	7	2.6	0.1	65,506	0	2	11	33	44	9	2.5	0.1	
4.x.x - Unifying Concepts	2	65	0	0	17	23	42	18	2.6	0.1	57,508	0	3	13	33	35	15	2.5	0.1	
MULTIPLE CHOICE																				
1.x.x - Physical Science	18	448	Correct	Incorrect	Omit/Mult				0.89	0.02	393,336	Correct	Incorrect	Omit/Mult				0.81	0.08	
2.x.x - Earth Space Science	19	459	89	11	0	0.75	0.02	401,488	71	29	0	0.71	0.04							
3.x.x - Biological Science	22	532	75	26	0	0.83	0.02	467,138	78	22	0	0.78	0.05							
4.x.x - Unifying Concepts	14	364	83	17	0	0.89	0.02	319,534	84	15	0	0.84	0.05							



2008-2009
INTERIM PERFORMANCE REPORT
SOCIAL STUDIES TREND DATA
Performance Level Percents

School: Shopville Elementary School
 District: Pulaski County
 Code: 501440
 Grade: 05



The horizontal bar represents the percent of students scoring at a performance level within a particular year. Percentages may not sum to 100% due to rounding.



2008-2009
INTERIM PERFORMANCE REPORT
SOCIAL STUDIES DISAGGREGATION
Performance Level Percents

School: Shopville Elementary School
 District: Pulaski County
 Code: 501440
 Grade: 05

		0%	10%	20%	30%	40%	50%	60%	70%	80%	90%	100%	N%	A%	P%	D%	P+D%	
All Students	Tested	5	27	56	13								Tested Students					
	100 Days	5	27	56	13								Total	5	27	56	13	68.75
Female	Tested	6	33	50	11								Female	6	33	50	11	61.11
	100 Days	5	32	51	11								Male	4	18	64	14	78.57
Male	Tested	4	18	64	14								White (Non-Hispanic)	5	27	56	13	68.25
	100 Days	4	19	63	15								African-American					
White (Non-Hispanic)	Tested	5	27	56	13								Hispanic					
	100 Days	5	27	56	13								Asian					
African-American	Tested												Other	Unreportable*				
	100 Days												Title I	5	27	56	13	68.75
Hispanic	Tested												Migrant					
	100 Days												Identified LEP					
Asian	Tested												Extended Sch Services	Unreportable*				
	100 Days												Gifted/Talented	0	6	67	28	94.44
Migrant	Tested												F/R Lunch Approved	7	30	57	7	63.64
	100 Days												Vocational/2 Credits					
Identified LEP	Tested												Disability	Unreportable*				
	100 Days												Alternate Assessment					
Free/Reduced Lunch Approved	Tested	7	30	57	7								100 Day Students					
	100 Days	7	30	57	7								Total	5	27	56	13	68.75
Disability	Tested												Female	5	32	51	11	62.16
	100 Days												Male	4	19	63	15	77.78
													White (Non-Hispanic)	5	27	56	13	68.25
													African-American					
													Hispanic					
													Asian					
													Other	Unreportable*				
													Title I	5	27	56	13	68.75
													Migrant					
													Identified LEP					
													Extended Sch Services	Unreportable*				
													Gifted/Talented	0	6	67	28	94.44
													F/R Lunch Approved	7	30	57	7	63.64
													Vocational/2 Credits					
													Disability	Unreportable*				
													Alternate Assessment					

■	Novice
■	Apprentice
■	Proficient
■	Distinguished

Percentage may not sum to 100% due to rounding. 'Unreportable*' indicates subpopulations with fewer than 10 students or subpopulations where all students score at the same performance level.



2008-2009
INTERIM PERFORMANCE REPORT
SOCIAL STUDIES CORE CONTENT

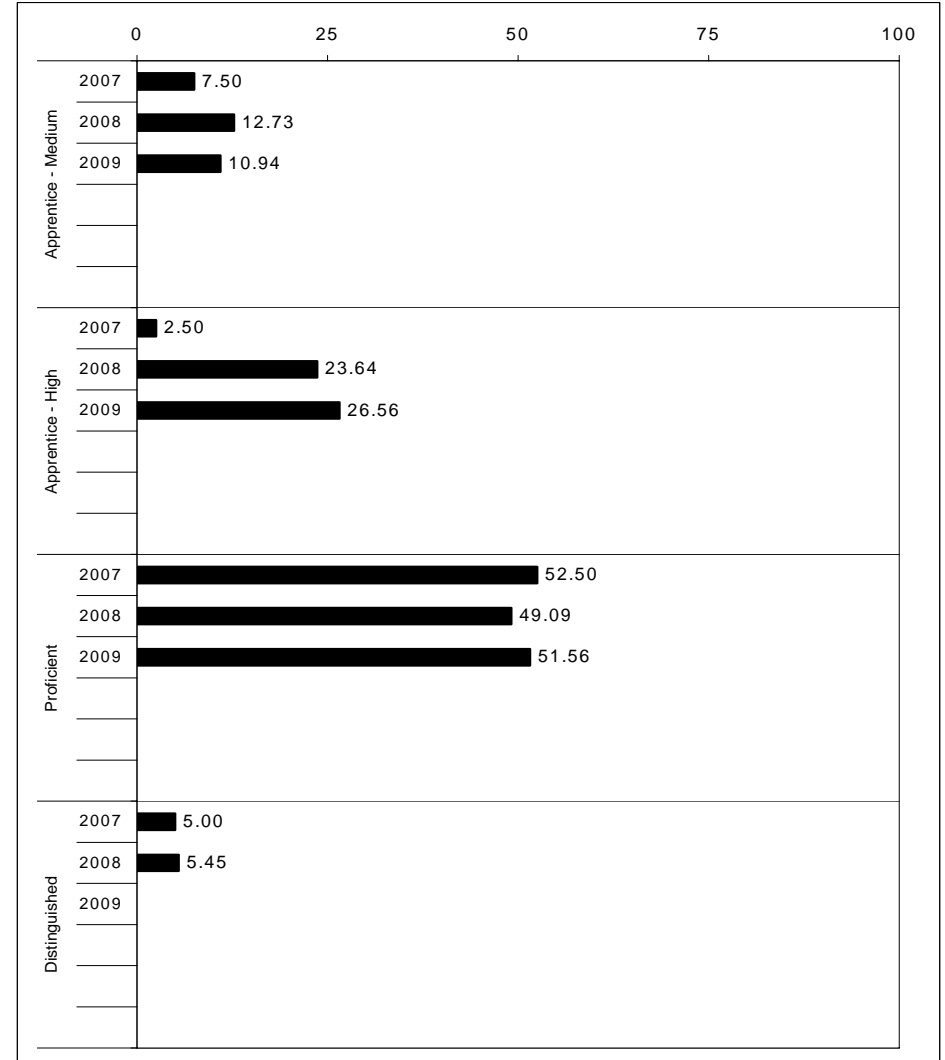
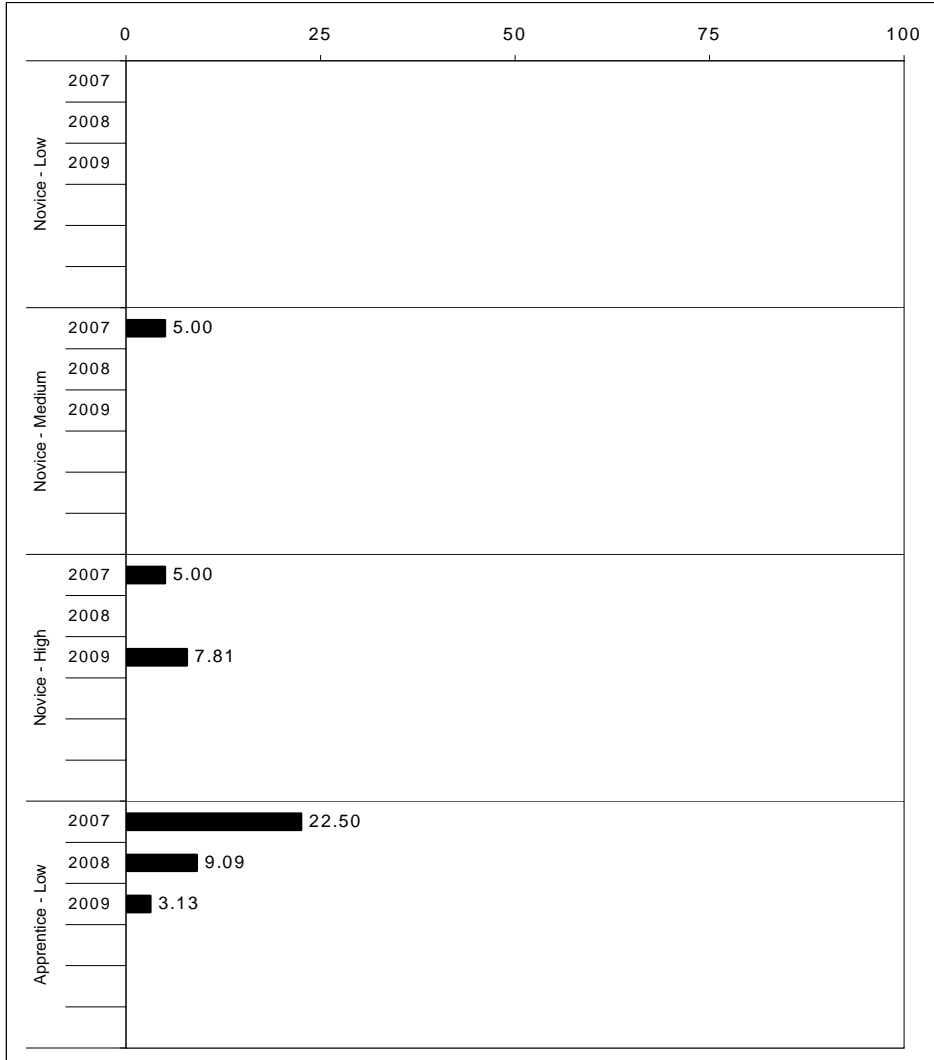
School: Shopville Elementary School
 District: Pulaski County
 Code: 501440
 Grade: 05

	No. Items	No. Observations	SCHOOL								STATE								School -State Mean
			B	0	1	2	3	4	Mean	Std. Err.	No. Observations	B	0	1	2	3	4	Mean	
OPEN RESPONSE																			
1.x.x - Government & Civics	2	73	0	4	38	53	4	0	1.6	0.1	56,903	0	5	37	45	10	2	1.7	-0.1
2.x.x - Cultures & Societies	1	11	0	9	18	73	0	0	1.6	0.2	8,151	0	4	21	56	15	4	1.9	-0.3
3.x.x - Economics	1	64	0	6	25	59	9	0	1.7	0.1	48,828	0	11	33	41	12	3	1.6	0.1
4.x.x - Geography	2	22	0	9	27	45	18	0	1.7	0.2	16,077	0	9	32	39	17	3	1.7	0.0
5.x.x - Historical Perspective	3	86	0	10	47	35	8	0	1.4	0.1	65,353	0	7	35	46	10	2	1.7	-0.3
MULTIPLE CHOICE																			
1.x.x - Government & Civics	14	417	70	30	Omit/Mult			0	0.70	0.02	317,571	66	34	Omit/Mult			0	0.66	0.04
2.x.x - Cultures & Societies	11	278	78	22	Omit/Mult			0	0.78	0.03	211,383	70	30	Omit/Mult			0	0.69	0.09
3.x.x - Economics	11	329	78	22	Omit/Mult			0	0.78	0.02	252,215	73	27	Omit/Mult			0	0.73	0.05
4.x.x - Geography	16	492	70	31	Omit/Mult			0	0.70	0.02	374,337	66	34	Omit/Mult			0	0.66	0.04
5.x.x - Historical Perspective	27	768	76	24	Omit/Mult			0	0.76	0.02	586,076	69	31	Omit/Mult			0	0.69	0.07



2008-2009
INTERIM PERFORMANCE REPORT
WRITING ON-DEMAND TREND DATA
Performance Level Percents

School: Shopville Elementary School
 District: Pulaski County
 Code: 501440
 Grade: 05



The horizontal bar represents the percent of students scoring at a performance level within a particular year. Percentages may not sum to 100% due to rounding.



2008-2009
INTERIM PERFORMANCE REPORT
WRITING ON-DEMAND DISAGGREGATION
Performance Level Percents

School: Shopville Elementary School
 District: Pulaski County
 Code: 501440
 Grade: 05

		0%	10%	20%	30%	40%	50%	60%	70%	80%	90%	100%	N%	A%	P%	D%	P+D%		
All Students	Tested	8	42				50												
	100 Days	8	41				52												
Female	Tested	6	36				58												
	100 Days	5	35				59												
Male	Tested	11	50				39												
	100 Days	11	48				41												
White (Non-Hispanic)	Tested	8	41				51												
	100 Days	8	40				52												
African-American	Tested																		
Hispanic	Tested																		
Asian	Tested																		
Migrant	Tested																		
Identified LEP	Tested																		
Free/Reduced Lunch Approved	Tested	11	45				43												
	100 Days	11	43				45												
Disability	Tested																		
	100 Days																		

Tested Students		N%	A%	P%	D%	P+D%
Total		8	42	50	0	50.00
Female		6	36	58	0	58.33
Male		11	50	39	0	39.29
White (Non-Hispanic)		8	41	51	0	50.79
African-American						
Hispanic						
Asian						
Other	Unreportable*					
Title I		8	42	50	0	50.00
Migrant						
Identified LEP						
Extended Sch Services	Unreportable*					
Gifted/Talented		0	28	72	0	72.22
F/R Lunch Approved		11	45	43	0	43.18
Vocational/2 Credits						
Disability	Unreportable*					
Alternate Assessment						
100 Day Students		N%	A%	P%	D%	P+D%
Total		8	41	52	0	51.56
Female		5	35	59	0	59.46
Male		11	48	41	0	40.74
White (Non-Hispanic)		8	40	52	0	52.38
African-American						
Hispanic						
Asian						
Other	Unreportable*					
Title I		8	41	52	0	51.56
Migrant						
Identified LEP						
Extended Sch Services	Unreportable*					
Gifted/Talented		0	28	72	0	72.22
F/R Lunch Approved		11	43	45	0	45.45
Vocational/2 Credits						
Disability	Unreportable*					
Alternate Assessment						

■ Novice
■ Apprentice
■ Proficient
■ Distinguished

Percentage may not sum to 100% due to rounding. 'Unreportable*' indicates subpopulations with fewer than 10 students or subpopulations where all students score at the same performance level.



2008-2009
INTERIM PERFORMANCE REPORT
WRITING ON-DEMAND CORE CONTENT

School: Shopville Elementary School
 District: Pulaski County
 Code: 501440
 Grade: 05

WRITING PROMPT	SCHOOL												STATE												School
	No. Observations	Percents											Mean	Percents											Mean
	B	0	1	2	3	4	5	6	7	8		B	0	1	2	3	4	5	6	7	8				
Inform																									
1.X.X - Content	20	0	0	0	10	15	40	20	15	0	0	4.15	0	1	1	9	9	34	18	21	4	2	4.43	-0.28	
2.X.X - Structure	20	0	0	0	15	15	35	20	15	0	0	4.05	0	1	2	9	10	35	19	19	3	1	4.33	-0.28	
3.X.X - Convention	20	0	0	0	10	25	30	20	15	0	0	4.05	0	0	0	12	11	34	19	19	3	1	4.38	-0.33	
Narrate for a purpose																									
1.X.X - Content	22	0	0	0	5	9	59	23	5	0	0	4.14	0	1	1	10	9	36	18	21	3	1	4.35	-0.21	
2.X.X - Structure	22	0	0	0	0	18	55	23	5	0	0	4.14	0	1	2	10	10	37	17	19	3	1	4.27	-0.13	
3.X.X - Convention	22	0	0	0	0	9	59	23	9	0	0	4.32	0	0	0	12	10	36	18	19	3	1	4.33	-0.01	
Persuade																									
1.X.X - Content	22	0	0	0	9	5	59	18	9	0	0	4.14	0	1	1	8	8	33	19	21	5	3	4.50	-0.36	
2.X.X - Structure	22	0	0	0	14	0	59	18	9	0	0	4.09	0	2	2	9	10	33	19	20	5	2	4.42	-0.33	
3.X.X - Convention	22	0	0	0	14	0	59	14	14	0	0	4.14	0	0	0	11	10	32	19	20	5	2	4.50	-0.36	

MULTIPLE CHOICE	No. Items	SCHOOL						STATE						School
		No. Observations	Percents			Mean	Std. Err.	No. Observations	Percents			Mean	-State Mean	
		Correct	Incorrect	Omit/Mult				Correct	Incorrect	Omit/Mult				
4.x.x - Writing Process	52	73	27	0	0.73	0.02	585,936	73	27	0	0.73	0.00		
4.10.x - Revising	16	70	30	0	0.70	0.04	130,317	66	34	0	0.66	0.04		
4.11.x - Editing	36	74	26	0	0.74	0.02	455,619	75	24	0	0.75	-0.01		