



Interim Performance Report

In March 2009, the Kentucky General Assembly passed Senate Bill 1 (SB1) that was subsequently signed into law by the Governor. SB1 calls for a significant overhaul of the state's assessment and accountability system. The new assessment system begins in the spring of 2012. The school years of 2008-2009, 2009-2010 and 2010-2011 are described in SB1 as an interim period. This three-year period allows Kentucky to develop the new assessment system and to carry on state and federal testing requirements.

The Interim Performance Report includes the Kentucky Core Content Test (KCCT) in Reading (grades 3-8 and 10), Mathematics (grades 3-8 and 11), Science (grades 4, 7 and 11), Social Studies (grades 5, 8 and 11) and Writing On-Demand (grades 5, 8 and 12). The KCCT is based on the Kentucky Core Content for Assessment (Version 4.1) and contains multiple choice and open response questions. The Writing On-Demand test uses writing prompts that require students to craft a piece of writing in a 60 minute period.

The KCCT is developed under the direction of content advisory committees of Kentucky educators who draft, review and select test questions. All test items are reviewed by a bias review committee to enhance the fairness of items for all Kentucky students.

The KCCT continues to fulfill the requirements of the federal statute known as the No Child Left Behind Act of 2001. A separate accountability report for No Child Left Behind (NCLB) is published by the Kentucky Department of Education.

The Interim Performance Report focuses entirely on the five state-required content areas and provides data for schools or districts. The data in this report is not used directly for state accountability; although, these results can fulfill the requirements of Senate Bill 168 from 2002 and may be used by schools or districts for their own local accountability needs.

Performance standards are based on descriptions of Novice, Apprentice, Proficient and Distinguished (NAPD) student performance levels specific to the content area and grade being assessed. The performance standards, in conjunction with Kentucky's Core Content for Assessment, should allow instruction to better focus on the content area to be taught and on how well students must demonstrate achievement in each content area.

Reporting Changes for 2009

Based on SB1, Kentucky will not be reporting state accountability and academic indices as in the past. The report does have several familiar pages with performance level (NAPD) trend, core content and disaggregation data per content area. Districts and schools will still see distributions of how students scored in the Novice (with sublevels), Apprentice (with sublevels), Proficient and Distinguished performance levels.

Confidentiality Changes

Due to federal regulations around the Family Education Rights and Privacy Act (FERPA), the numbers of students have been removed. Though there is a need to report as much data as possible, there is also a paramount need to maintain the confidential aspects of individual scores. When scores are reported in what is commonly called "small cells" where very few students may be categorized, there is the possibility of revealing individual scores when numbers are reported. Numbers are reported to each district in a confidential report that accompanies the public Interim Performance Report.

2008-2009

**INTERIM PERFORMANCE REPORT**

School: Woodstock Elementary School

District: Pulaski County

Code: 501560

Grade: PRIMARY-05

**CONTENTS OF THIS REPORT**

Introduction	1
Academic Trend Data	
Reading Results	2-8
Mathematics Results	9-15
Science Results	16-18
Social Studies Results	19-21
Writing Results	22-24

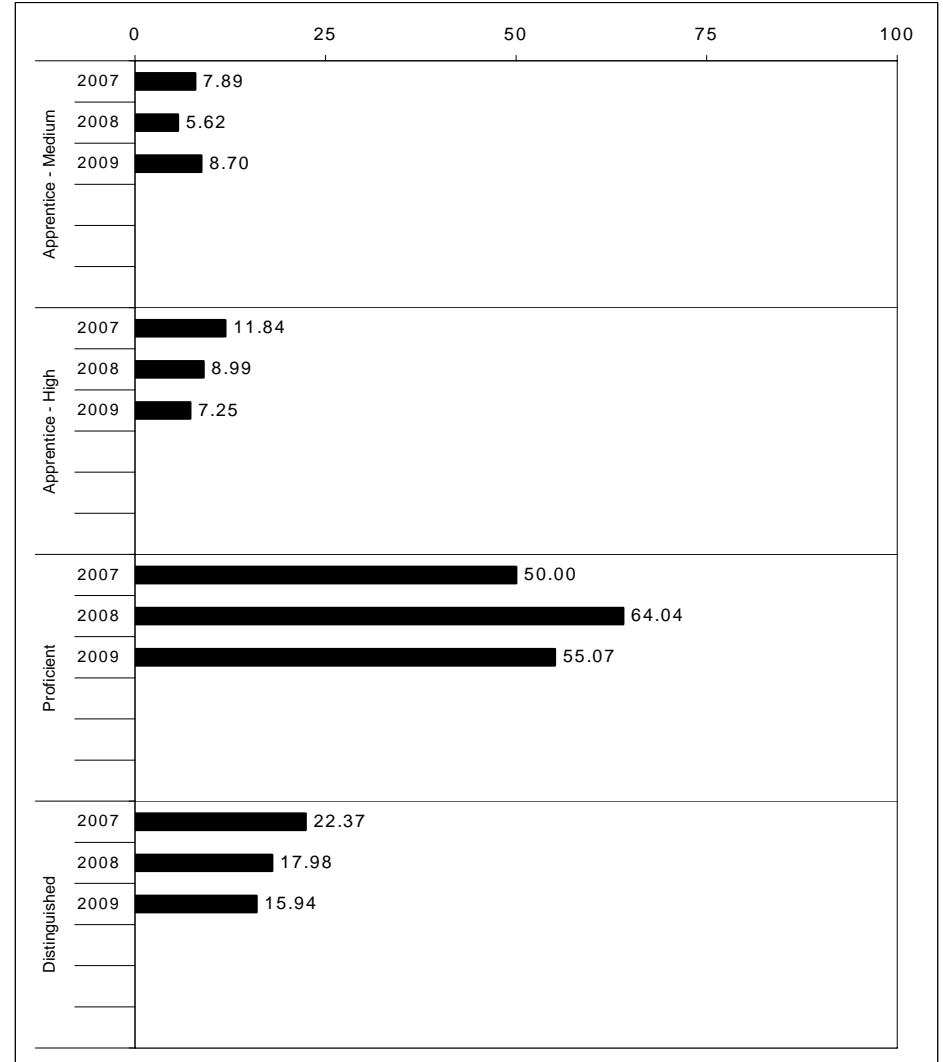
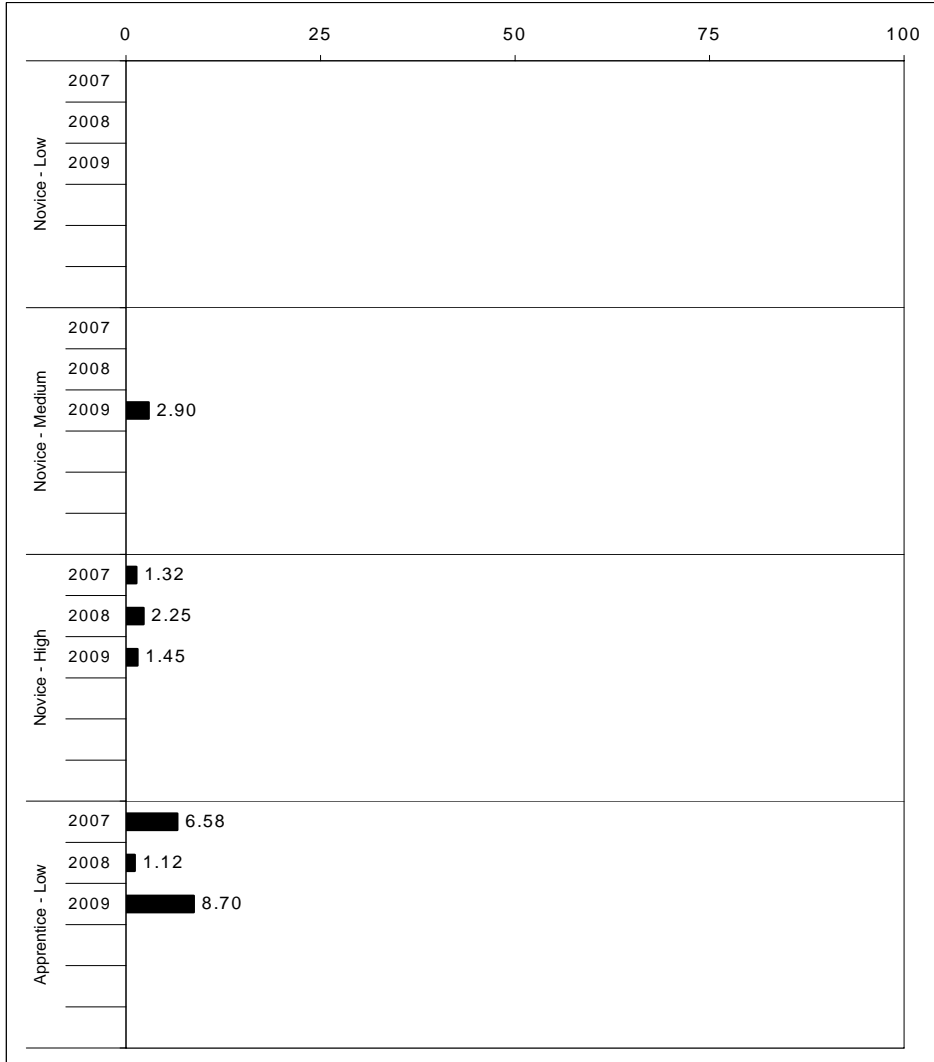
For more information, refer to the 2009 Interim Assessment Interpretative Guide on the Kentucky Department of Education Web site ([www.education.ky.gov](http://www.education.ky.gov)).





2008-2009  
**INTERIM PERFORMANCE REPORT**  
**READING TREND DATA**  
**Performance Level Percents**

School: Woodstock Elementary School  
 District: Pulaski County  
 Code: 501560  
 Grade: ELEMENTARY



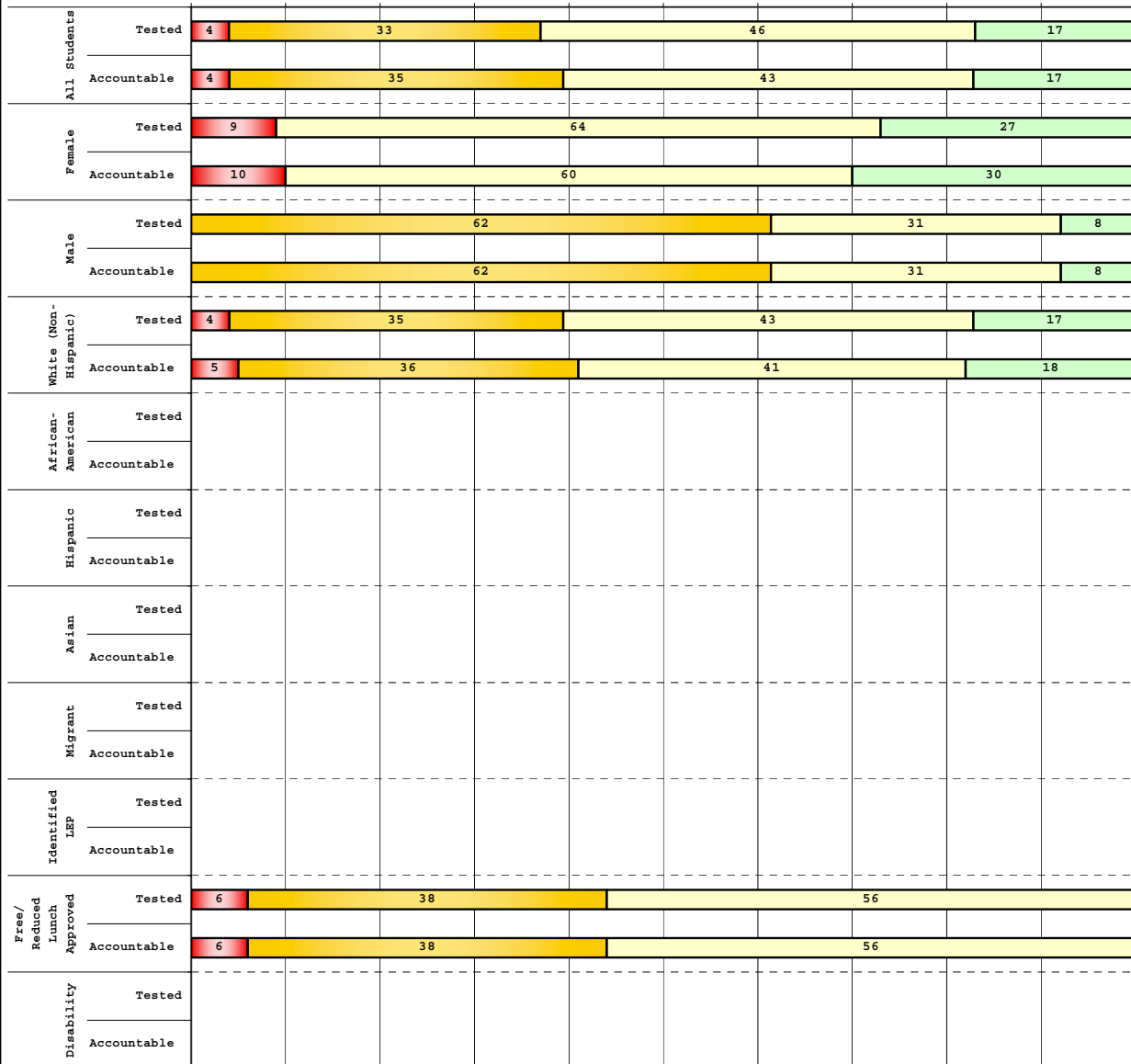
The horizontal bar represents the percent of students scoring at a performance level within a particular year. Percentages may not sum to 100% due to rounding.



**2008-2009  
INTERIM PERFORMANCE REPORT  
READING DISAGGREGATION  
Performance Level Percents**

School: Woodstock Elementary School  
 District: Pulaski County  
 Code: 501560  
 Grade: 03

0% 10% 20% 30% 40% 50% 60% 70% 80% 90% 100%



		N%	A%	P%	D%	P+D%
<b>Tested Students</b>						
Total		4	33	46	17	62.50
Female		9	0	64	27	90.91
Male		0	62	31	8	38.46
White (Non-Hispanic)		4	35	43	17	60.87
African-American	Unreportable*					
Hispanic						
Asian						
Other						
Title I		4	33	46	17	62.50
Migrant						
Identified LEP						
Extended Sch Services	Unreportable*					
Gifted/Talented	Unreportable*					
F/R Lunch Approved		6	38	56	0	56.25
Vocational/2 Credits						
Disability	Unreportable*					
Alternate Assessment						
<b>NCLB Accountable Students</b>						
Total		4	35	43	17	60.87
Female		10	0	60	30	90.00
Male		0	62	31	8	38.46
White (Non-Hispanic)		5	36	41	18	59.09
African-American	Unreportable*					
Hispanic						
Asian						
Other						
Title I		4	35	43	17	60.87
Migrant						
Identified LEP						
Extended Sch Services	Unreportable*					
Gifted/Talented	Unreportable*					
F/R Lunch Approved		6	38	56	0	56.25
Vocational/2 Credits						
Disability	Unreportable*					
Alternate Assessment						

<span style="color:red">■</span> Novice
<span style="color:orange">■</span> Apprentice
<span style="color:yellow">■</span> Proficient
<span style="color:green">■</span> Distinguished

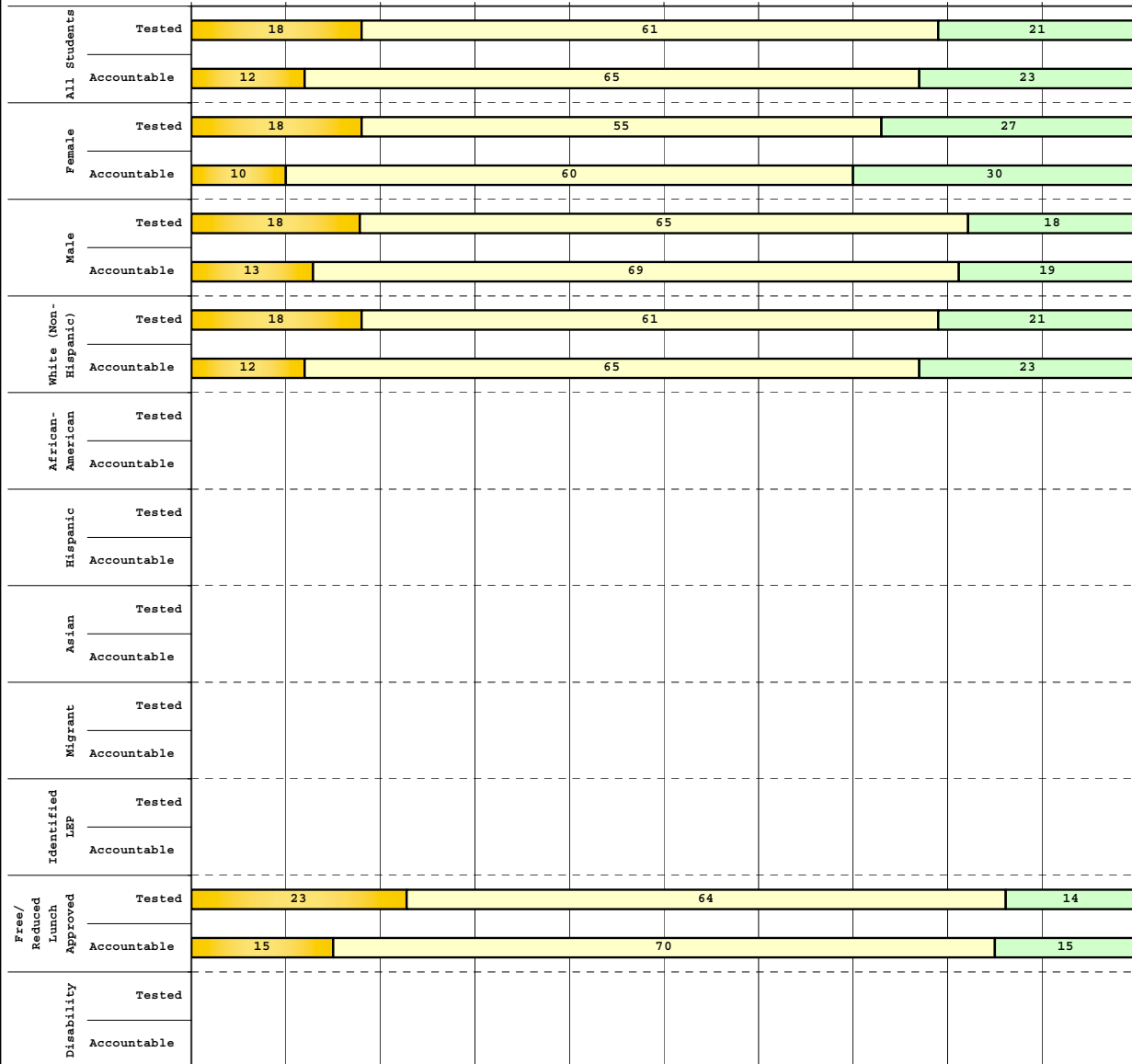
Percentage may not sum to 100% due to rounding. 'Unreportable\*' indicates subpopulations with fewer than 10 students or subpopulations where all students score at the same performance level.



2008-2009  
**INTERIM PERFORMANCE REPORT**  
**READING DISAGGREGATION**  
**Performance Level Percents**

School: Woodstock Elementary School  
 District: Pulaski County  
 Code: 501560  
 Grade: 04

0% 10% 20% 30% 40% 50% 60% 70% 80% 90% 100%



	N%	A%	P%	D%	P+D%
<b>Tested Students</b>					
Total	0	18	61	21	82.14
Female	0	18	55	27	81.82
Male	0	18	65	18	82.35
White (Non-Hispanic)	0	18	61	21	82.14
African-American					
Hispanic					
Asian					
Other					
Title I	0	18	61	21	82.14
Migrant					
Identified LEP					
Extended Sch Services	0	18	61	21	82.14
Gifted/Talented	Unreportable*				
F/R Lunch Approved	0	23	64	14	77.27
Vocational/2 Credits					
Disability	Unreportable*				
Alternate Assessment					
<b>NCLB Accountable Students</b>					
Total	0	12	65	23	88.46
Female	0	10	60	30	90.00
Male	0	13	69	19	87.50
White (Non-Hispanic)	0	12	65	23	88.46
African-American					
Hispanic					
Asian					
Other					
Title I	0	12	65	23	88.46
Migrant					
Identified LEP					
Extended Sch Services	0	12	65	23	88.46
Gifted/Talented	Unreportable*				
F/R Lunch Approved	0	15	70	15	85.00
Vocational/2 Credits					
Disability	Unreportable*				
Alternate Assessment					

Novice  
 Apprentice  
 Proficient  
 Distinguished

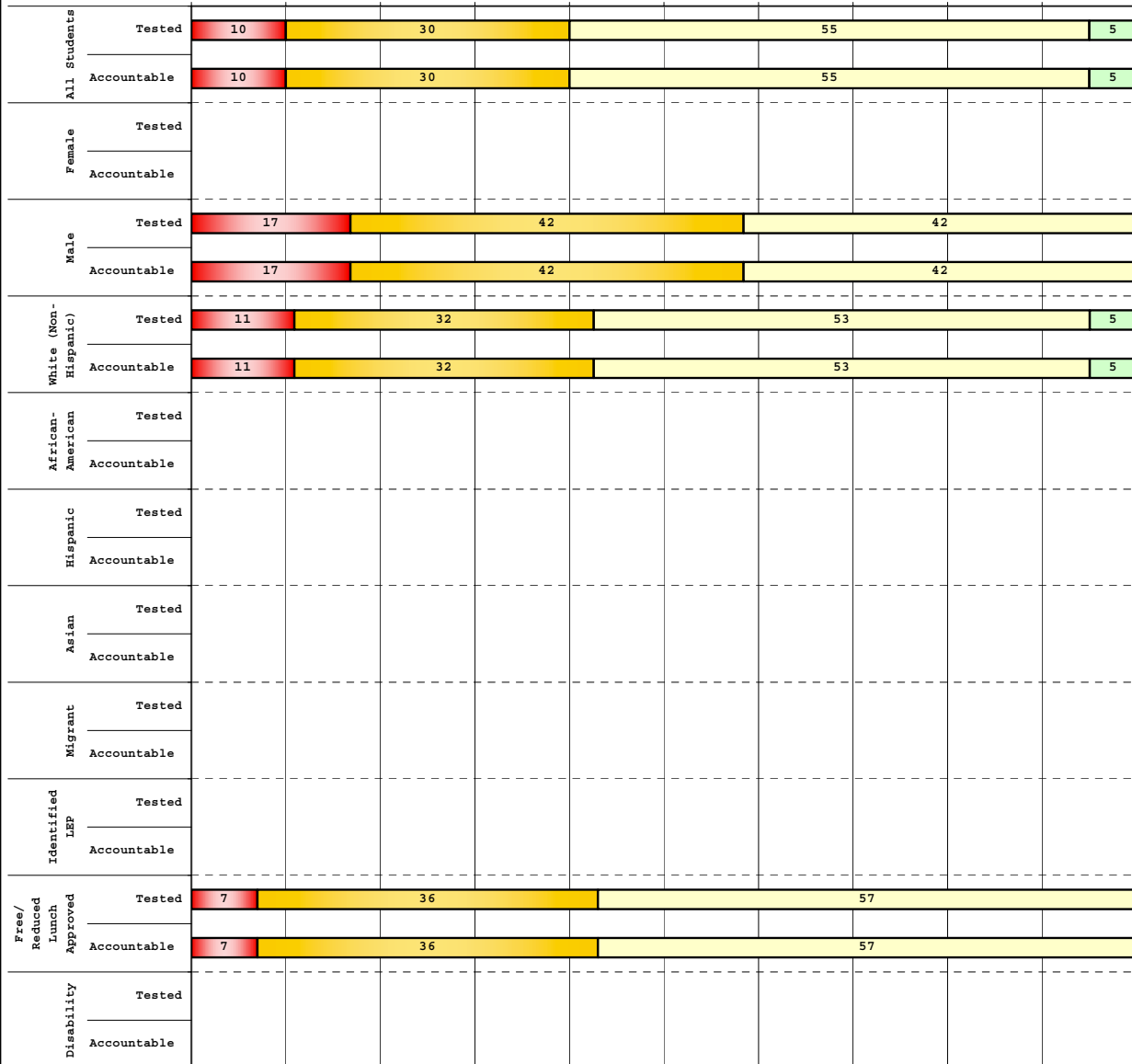
Percentage may not sum to 100% due to rounding. 'Unreportable\*' indicates subpopulations with fewer than 10 students or subpopulations where all students score at the same performance level.



**2008-2009  
INTERIM PERFORMANCE REPORT  
READING DISAGGREGATION  
Performance Level Percents**

School: Woodstock Elementary School  
District: Pulaski County  
Code: 501560  
Grade: 05

0% 10% 20% 30% 40% 50% 60% 70% 80% 90% 100%



		N%	A%	P%	D%	P+D%
<b>Tested Students</b>						
Total		10	30	55	5	60.00
Female	Unreportable*					
Male		17	42	42	0	41.67
White (Non-Hispanic)		11	32	53	5	57.89
African-American	Unreportable*					
Hispanic						
Asian						
Other						
Title I		10	30	55	5	60.00
Migrant						
Identified LEP						
Extended Sch Services						
Gifted/Talented	Unreportable*					
F/R Lunch Approved		7	36	57	0	57.14
Vocational/2 Credits						
Disability	Unreportable*					
Alternate Assessment	Unreportable*					
<b>NCLB Accountable Students</b>						
Total		10	30	55	5	60.00
Female	Unreportable*					
Male		17	42	42	0	41.67
White (Non-Hispanic)		11	32	53	5	57.89
African-American	Unreportable*					
Hispanic						
Asian						
Other						
Title I		10	30	55	5	60.00
Migrant						
Identified LEP						
Extended Sch Services						
Gifted/Talented	Unreportable*					
F/R Lunch Approved		7	36	57	0	57.14
Vocational/2 Credits						
Disability	Unreportable*					
Alternate Assessment	Unreportable*					

<span style="color: red;">■</span> Novice
<span style="color: orange;">■</span> Apprentice
<span style="color: yellow;">■</span> Proficient
<span style="color: green;">■</span> Distinguished

Percentage may not sum to 100% due to rounding. 'Unreportable\*' indicates subpopulations with fewer than 10 students or subpopulations where all students score at the same performance level.



**2008-2009**  
**INTERIM PERFORMANCE REPORT**  
**READING CORE CONTENT**

School: Woodstock Elementary School  
 District: Pulaski County  
 Code: 501560  
 Grade: 03

	No. Items	No. Observations	SCHOOL								Std. Err.	No. Observations	STATE								School -State Mean
			B	0	1	2	3	4	Mean	B			0	1	2	3	4	Mean			
<b>OPEN RESPONSE</b>																					
2.0.x - Developing Understanding	2	46	0	7	43	35	13	2	1.6	0.1	100,212	0	10	30	44	14	2	1.7	-0.1		
3.0.x - Interpreting Text	2	46	0	7	43	35	13	2	1.6	0.1	100,212	0	10	30	44	14	2	1.7	-0.1		
<b>MULTIPLE CHOICE</b>																					
1.0.x - Forming a Foundation	32	180	78	22	0				0.78	0.03	392,589	83	17	0				0.83	-0.05		
2.0.x - Developing Understanding	89	461	71	28	0				0.71	0.02	993,477	80	20	0				0.80	-0.09		
3.0.x - Interpreting Text	31	209	68	33	0				0.67	0.03	468,115	77	23	0				0.77	-0.10		
5.0.x - Critical Stance	15	96	73	27	0				0.73	0.04	208,359	79	21	0				0.79	-0.06		



**2008-2009**  
**INTERIM PERFORMANCE REPORT**  
**READING CORE CONTENT**

School: Woodstock Elementary School  
 District: Pulaski County  
 Code: 501560  
 Grade: 04

	No. Items	No. Observations	SCHOOL							Mean	Std. Err.	No. Observations	STATE							Mean	School -State Mean
			B	0	1	2	3	4	Percents				B	0	1	2	3	4	Percents		
<b>OPEN RESPONSE</b>																					
2.0.x - Developing Understanding	5	43	0	0	19	47	33	2	2.2	0.1	81,849	0	3	24	52	18	3	1.9	0.3		
3.0.x - Interpreting Text	6	71	0	0	20	42	32	6	2.2	0.1	131,199	0	4	22	45	23	5	2.0	0.2		
<b>MULTIPLE CHOICE</b>																					
			<b>Correct</b>	<b>Incorrect</b>	<b>Omit/Mult</b>							<b>Correct</b>	<b>Incorrect</b>	<b>Omit/Mult</b>							
1.0.x - Forming a Foundation	34	212	82	18	1				0.82	0.03	401,452	72	28	0				0.71	0.11		
2.0.x - Developing Understanding	76	460	80	20	0				0.80	0.02	868,422	73	27	0				0.73	0.07		
3.0.x - Interpreting Text	29	147	86	14	0				0.86	0.03	278,648	79	21	0				0.79	0.07		
5.0.x - Critical Stance	9	83	77	23	0				0.77	0.05	155,704	74	26	0				0.74	0.03		



**2008-2009**  
**INTERIM PERFORMANCE REPORT**  
**READING CORE CONTENT**

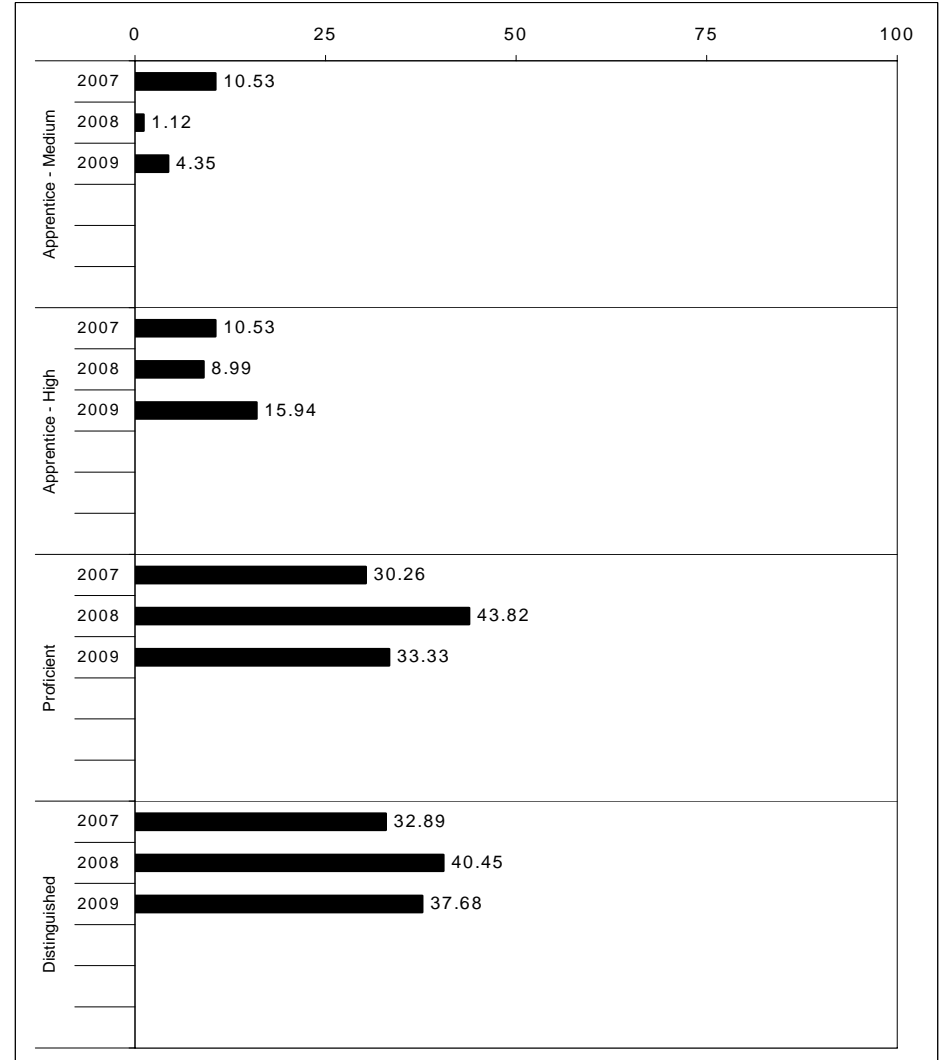
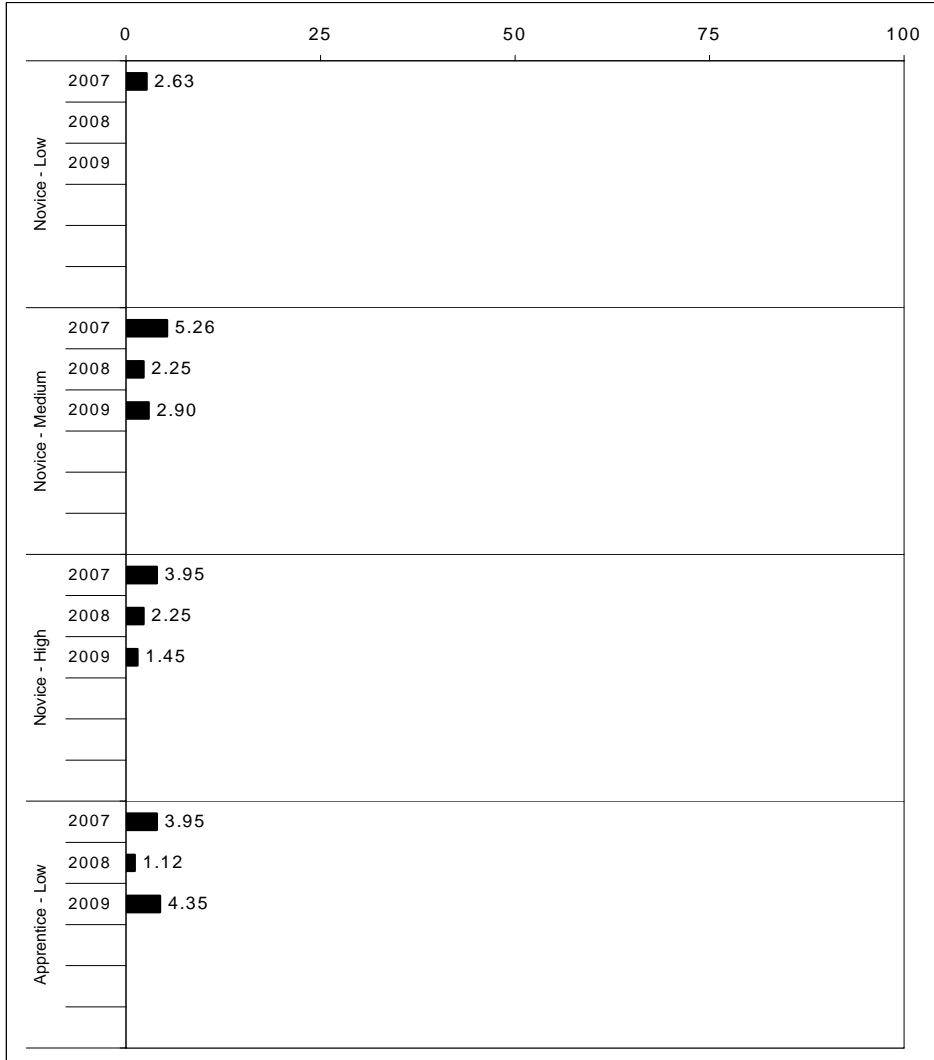
School: Woodstock Elementary School  
 District: Pulaski County  
 Code: 501560  
 Grade: 05

	No. Items	No. Observations	SCHOOL								Std. Err.	No. Observations	STATE								School -State Mean
			B	0	1	2	3	4	Mean	B			0	1	2	3	4	Mean			
<b>OPEN RESPONSE</b>																					
2.0.x - Developing Understanding	6	35	0	6	23	54	14	3	1.9	0.2	89,507	0	5	23	48	20	5	2.0	-0.1		
3.0.x - Interpreting Text	6	51	0	6	18	59	16	2	1.9	0.1	130,403	0	5	21	50	19	4	2.0	-0.1		
<b>MULTIPLE CHOICE</b>																					
1.0.x - Forming a Foundation	28	104	71	29	0				0.71	0.04	268,187	74	26	0				0.74	-0.03		
2.0.x - Developing Understanding	71	319	74	26	0				0.74	0.02	823,068	80	20	0				0.80	-0.06		
3.0.x - Interpreting Text	27	133	79	21	0				0.79	0.03	341,653	81	19	0				0.81	-0.02		
5.0.x - Critical Stance	17	118	59	42	0				0.58	0.04	300,671	75	25	0				0.75	-0.17		



2008-2009  
**INTERIM PERFORMANCE REPORT**  
**MATHEMATICS TREND DATA**  
**Performance Level Percents**

School: Woodstock Elementary School  
 District: Pulaski County  
 Code: 501560  
 Grade: ELEMENTARY



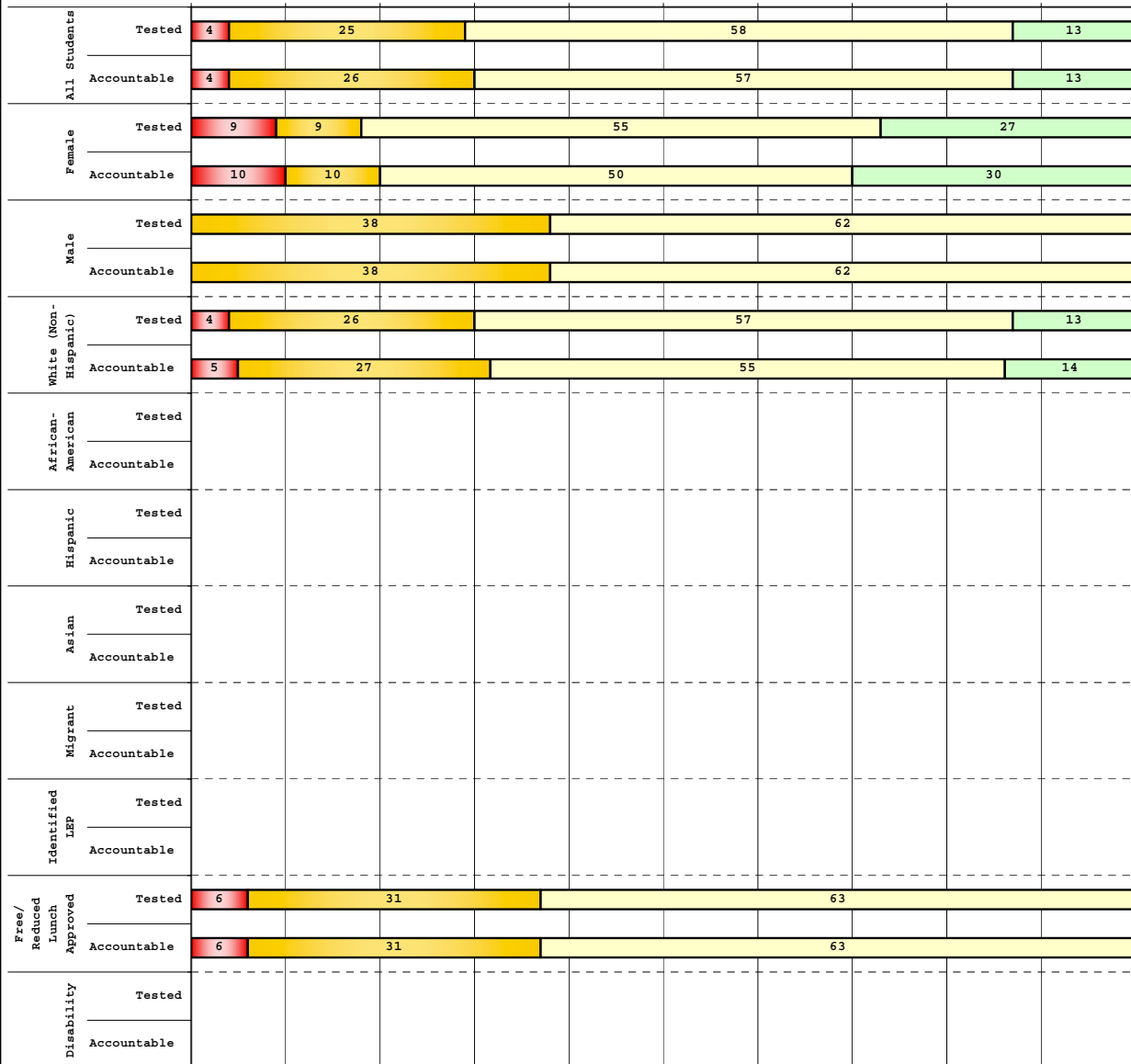
The horizontal bar represents the percent of students scoring at a performance level within a particular year. Percentages may not sum to 100% due to rounding.



**2008-2009  
INTERIM PERFORMANCE REPORT  
MATHEMATICS DISAGGREGATION  
Performance Level Percents**

School: Woodstock Elementary School  
District: Pulaski County  
Code: 501560  
Grade: 03

0% 10% 20% 30% 40% 50% 60% 70% 80% 90% 100%



Category	N%	A%	P%	D%	P+D%
<b>Tested Students</b>					
Total	4	25	58	13	70.83
Female	9	9	55	27	81.82
Male	0	38	62	0	61.54
White (Non-Hispanic)	4	26	57	13	69.57
African-American	Unreportable*				
Hispanic					
Asian					
Other					
Title I	4	25	58	13	70.83
Migrant					
Identified LEP					
Extended Sch Services	Unreportable*				
Gifted/Talented	Unreportable*				
F/R Lunch Approved	6	31	63	0	62.50
Vocational/2 Credits					
Disability	Unreportable*				
Alternate Assessment					
<b>NCLB Accountable Students</b>					
Total	4	26	57	13	69.57
Female	10	10	50	30	80.00
Male	0	38	62	0	61.54
White (Non-Hispanic)	5	27	55	14	68.18
African-American	Unreportable*				
Hispanic					
Asian					
Other					
Title I	4	26	57	13	69.57
Migrant					
Identified LEP					
Extended Sch Services	Unreportable*				
Gifted/Talented	Unreportable*				
F/R Lunch Approved	6	31	63	0	62.50
Vocational/2 Credits					
Disability	Unreportable*				
Alternate Assessment					

<span style="color:red">■</span> Novice
<span style="color:orange">■</span> Apprentice
<span style="color:green">■</span> Proficient
<span style="color:blue">■</span> Distinguished

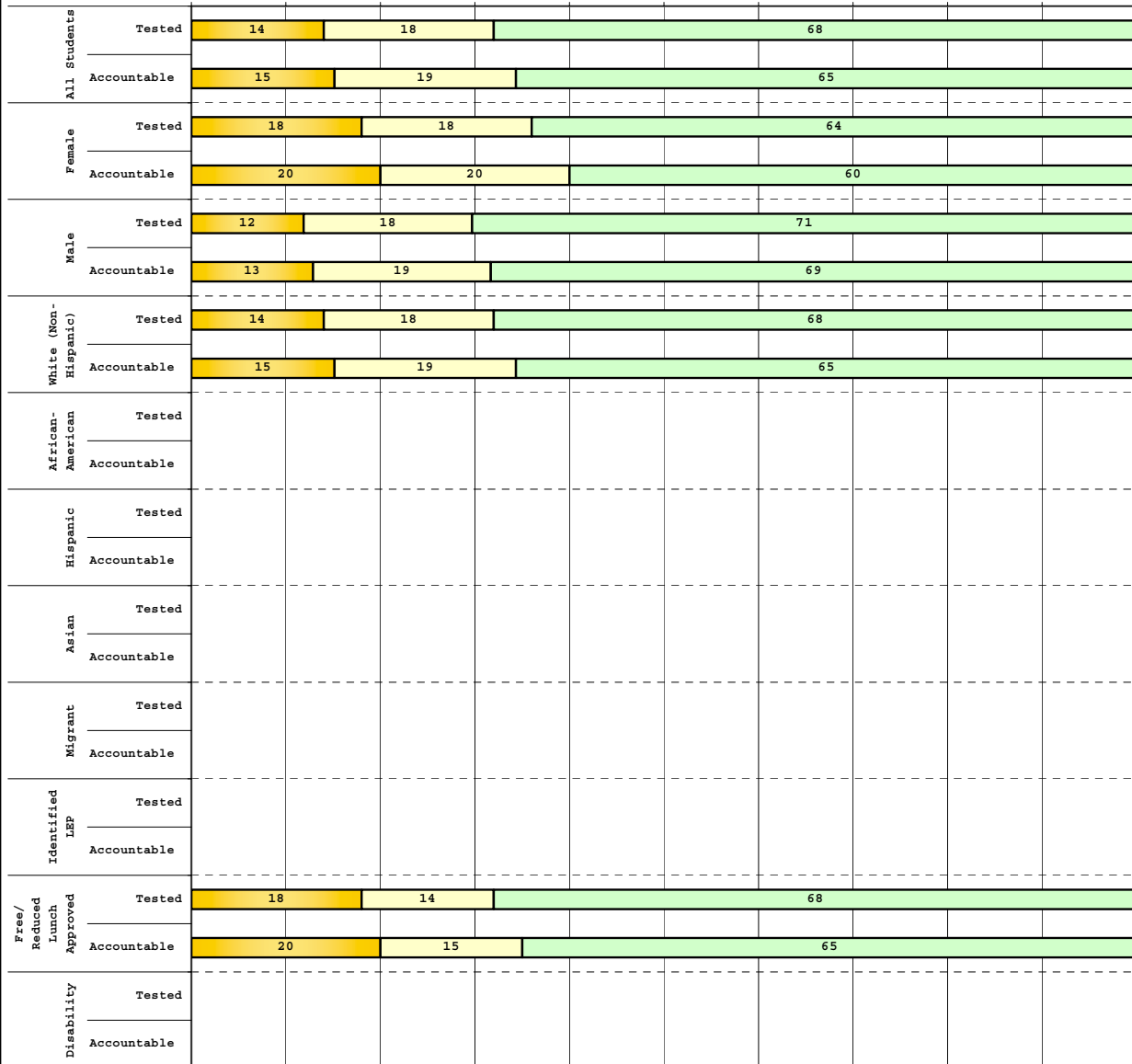
Percentage may not sum to 100% due to rounding. 'Unreportable\*' indicates subpopulations with fewer than 10 students or subpopulations where all students score at the same performance level.



**2008-2009**  
**INTERIM PERFORMANCE REPORT**  
**MATHEMATICS DISAGGREGATION**  
**Performance Level Percents**

School: Woodstock Elementary School  
 District: Pulaski County  
 Code: 501560  
 Grade: 04

0% 10% 20% 30% 40% 50% 60% 70% 80% 90% 100%



	N%	A%	P%	D%	P+D%
<b>Tested Students</b>					
Total	0	14	18	68	85.71
Female	0	18	18	64	81.82
Male	0	12	18	71	88.24
White (Non-Hispanic)	0	14	18	68	85.71
African-American					
Hispanic					
Asian					
Other					
Title I	0	14	18	68	85.71
Migrant					
Identified LEP					
Extended Sch Services	0	14	18	68	85.71
Gifted/Talented	Unreportable*				
F/R Lunch Approved	0	18	14	68	81.82
Vocational/2 Credits					
Disability	Unreportable*				
Alternate Assessment					
<b>NCLB Accountable Students</b>					
Total	0	15	19	65	84.62
Female	0	20	20	60	80.00
Male	0	13	19	69	87.50
White (Non-Hispanic)	0	15	19	65	84.62
African-American					
Hispanic					
Asian					
Other					
Title I	0	15	19	65	84.62
Migrant					
Identified LEP					
Extended Sch Services	0	15	19	65	84.62
Gifted/Talented	Unreportable*				
F/R Lunch Approved	0	20	15	65	80.00
Vocational/2 Credits					
Disability	Unreportable*				
Alternate Assessment					

<span style="display:inline-block; width:10px; height:10px; background-color:gray; border:1px solid black;"></span> Novice
<span style="display:inline-block; width:10px; height:10px; background-color:yellow; border:1px solid black;"></span> Apprentice
<span style="display:inline-block; width:10px; height:10px; background-color:lightgreen; border:1px solid black;"></span> Proficient
<span style="display:inline-block; width:10px; height:10px; background-color:lightblue; border:1px solid black;"></span> Distinguished

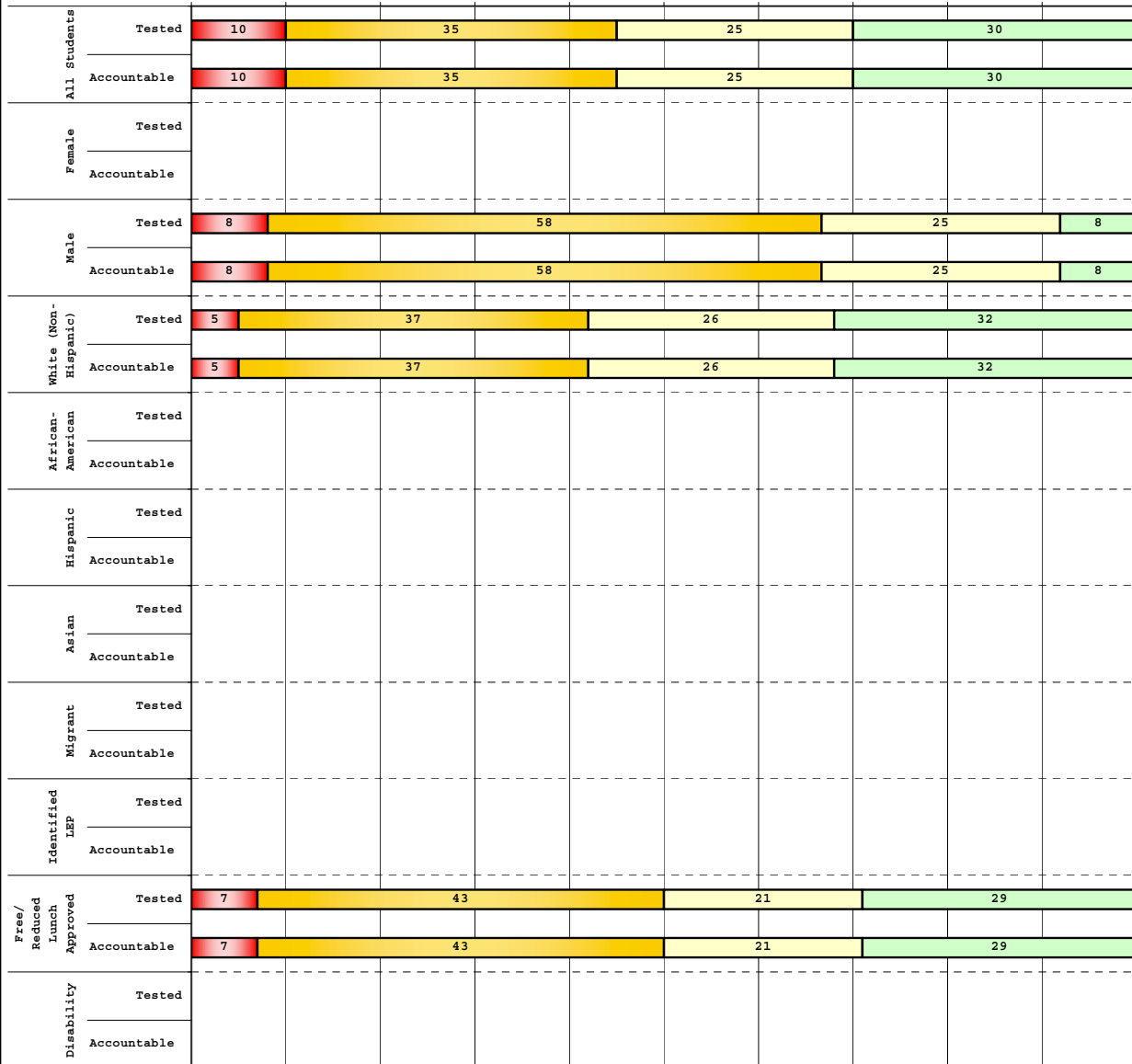
Percentage may not sum to 100% due to rounding. 'Unreportable\*' indicates subpopulations with fewer than 10 students or subpopulations where all students score at the same performance level.



2008-2009  
**INTERIM PERFORMANCE REPORT**  
**MATHEMATICS DISAGGREGATION**  
**Performance Level Percents**

School: Woodstock Elementary School  
 District: Pulaski County  
 Code: 501560  
 Grade: 05

0% 10% 20% 30% 40% 50% 60% 70% 80% 90% 100%



Category	N%	A%	P%	D%	P+D%
<b>Tested Students</b>					
Total	10	35	25	30	55.00
Female	Unreportable*				
Male	8	58	25	8	33.33
White (Non-Hispanic)	5	37	26	32	57.89
African-American	Unreportable*				
Hispanic					
Asian					
Other					
Title I	10	35	25	30	55.00
Migrant					
Identified LEP					
Extended Sch Services					
Gifted/Talented	Unreportable*				
F/R Lunch Approved	7	43	21	29	50.00
Vocational/2 Credits					
Disability	Unreportable*				
Alternate Assessment	Unreportable*				
<b>NCLB Accountable Students</b>					
Total	10	35	25	30	55.00
Female	Unreportable*				
Male	8	58	25	8	33.33
White (Non-Hispanic)	5	37	26	32	57.89
African-American	Unreportable*				
Hispanic					
Asian					
Other					
Title I	10	35	25	30	55.00
Migrant					
Identified LEP					
Extended Sch Services					
Gifted/Talented	Unreportable*				
F/R Lunch Approved	7	43	21	29	50.00
Vocational/2 Credits					
Disability	Unreportable*				
Alternate Assessment	Unreportable*				

<span style="color: red;">■</span> Novice
<span style="color: orange;">■</span> Apprentice
<span style="color: yellow;">■</span> Proficient
<span style="color: green;">■</span> Distinguished

Percentage may not sum to 100% due to rounding. 'Unreportable\*' indicates subpopulations with fewer than 10 students or subpopulations where all students score at the same performance level.



**2008-2009**  
**INTERIM PERFORMANCE REPORT**  
**MATHEMATICS CORE CONTENT**

School: Woodstock Elementary School  
 District: Pulaski County  
 Code: 501560  
 Grade: 03

	No. Items	No. Observations	SCHOOL								STATE								School -State Mean
			Percents						Mean	Std. Err.	Percents						Mean		
			B	0	1	2	3	4					No. Observations	B	0	1		2	3
<b>OPEN RESPONSE</b>																			
1.x.x - Number Prop Oper	5	59	0	25	47	19	5	3	1.1	0.2	125,243	0	21	35	26	10	8	1.5	-0.4
2.x.x - Measurement	1	5							***		8,325	0	25	5	30	14	25	2.1	
3.x.x - Geometry	2	6							***		16,777	0	8	24	35	13	20	2.1	
4.x.x - Data Analysis & Probabilit	1	23	0	17	17	43	9	13	1.8	0.3	50,106	0	9	13	19	27	32	2.6	-0.8
5.x.x - Algebraic Thinking	2	27	0	15	15	37	19	15	2.0	0.2	58,404	0	9	14	19	28	31	2.6	-0.6
<b>MULTIPLE CHOICE</b>																			
1.x.x - Number Prop Oper	32	370	72	28	0				0.72	0.02	810,106	74	26	0				0.74	-0.02
2.x.x - Measurement	7	86	87	13	0				0.87	0.04	183,647	81	18	0				0.81	0.06
3.x.x - Geometry	18	184	84	16	0				0.84	0.03	400,848	85	15	0				0.85	-0.01
4.x.x - Data Analysis & Probabilit	8	88	63	38	0				0.63	0.05	192,126	69	31	0				0.69	-0.06
5.x.x - Algebraic Thinking	11	100	81	19	0				0.81	0.04	217,089	78	22	0				0.78	0.03



**2008-2009**  
**INTERIM PERFORMANCE REPORT**  
**MATHEMATICS CORE CONTENT**

School: Woodstock Elementary School  
 District: Pulaski County  
 Code: 501560  
 Grade: 04

	No. Items	No. Observations	SCHOOL								Std. Err.	No. Observations	STATE								School -State Mean
			B	0	1	2	3	4	Mean	B			0	1	2	3	4	Mean			
<b>OPEN RESPONSE</b>																					
1.x.x - Number Prop Oper	4	38	0	13	8	34	29	16	2.3	0.2	73,656	0	17	24	29	19	12	1.9	0.4		
2.x.x - Measurement	1	5							***		8,195	0	43	13	10	20	13	1.5			
3.x.x - Geometry	2	31	0	0	13	16	23	48	3.1	0.3	57,352	0	11	20	17	19	33	2.4	0.7		
4.x.x - Data Analysis & Probabilit	1	4							***		8,152	0	5	36	29	23	6	1.9			
5.x.x - Algebraic Thinking	2	31	0	3	10	35	26	26	2.6	0.2	57,508	0	5	27	32	25	11	2.1	0.5		
<b>MULTIPLE CHOICE</b>																					
1.x.x - Number Prop Oper	31	353	79	20	0				0.79	0.03	664,194	67	33	0				0.67	0.12		
2.x.x - Measurement	7	73	84	16	0				0.84	0.06	139,170	62	38	0				0.62	0.22		
3.x.x - Geometry	14	147	93	8	0				0.93	0.03	278,460	77	23	0				0.77	0.16		
4.x.x - Data Analysis & Probabilit	12	162	82	18	0				0.82	0.04	303,394	71	29	0				0.71	0.11		
5.x.x - Algebraic Thinking	11	133	80	20	0				0.80	0.04	253,829	69	31	0				0.69	0.11		



**2008-2009**  
**INTERIM PERFORMANCE REPORT**  
**MATHEMATICS CORE CONTENT**

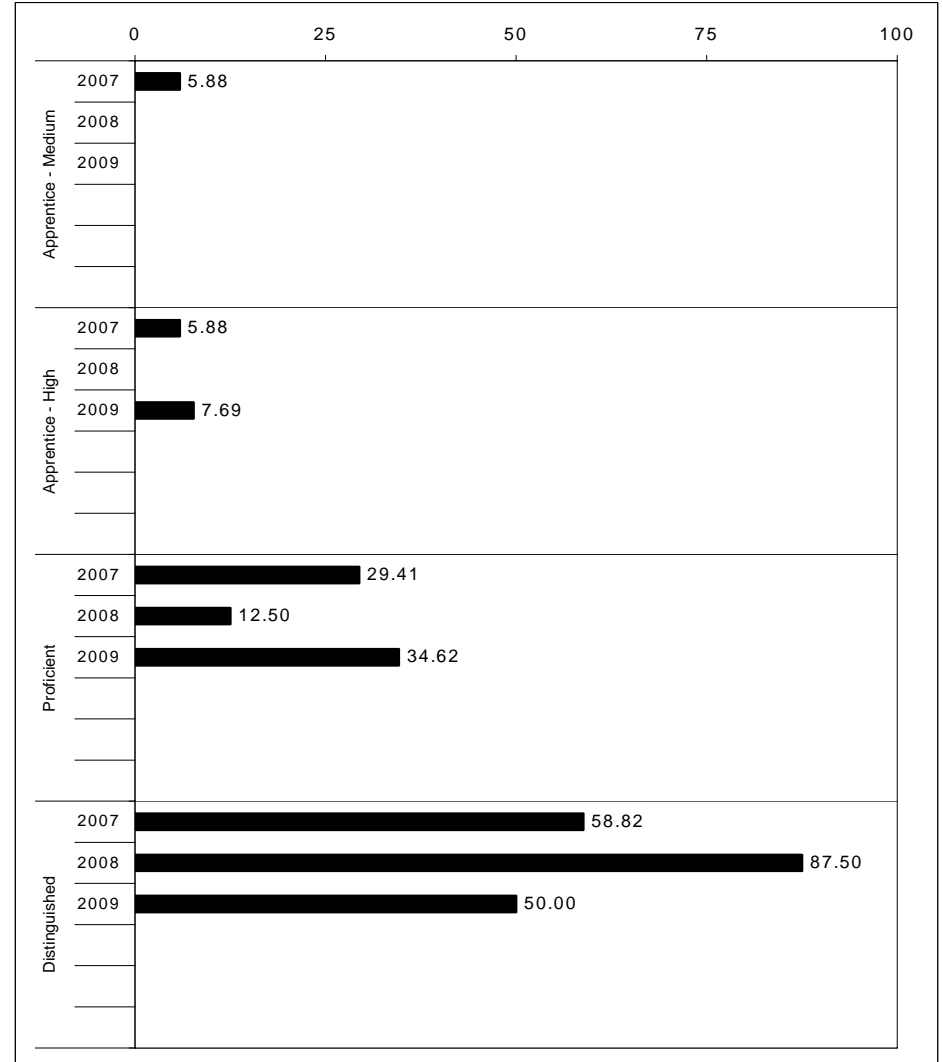
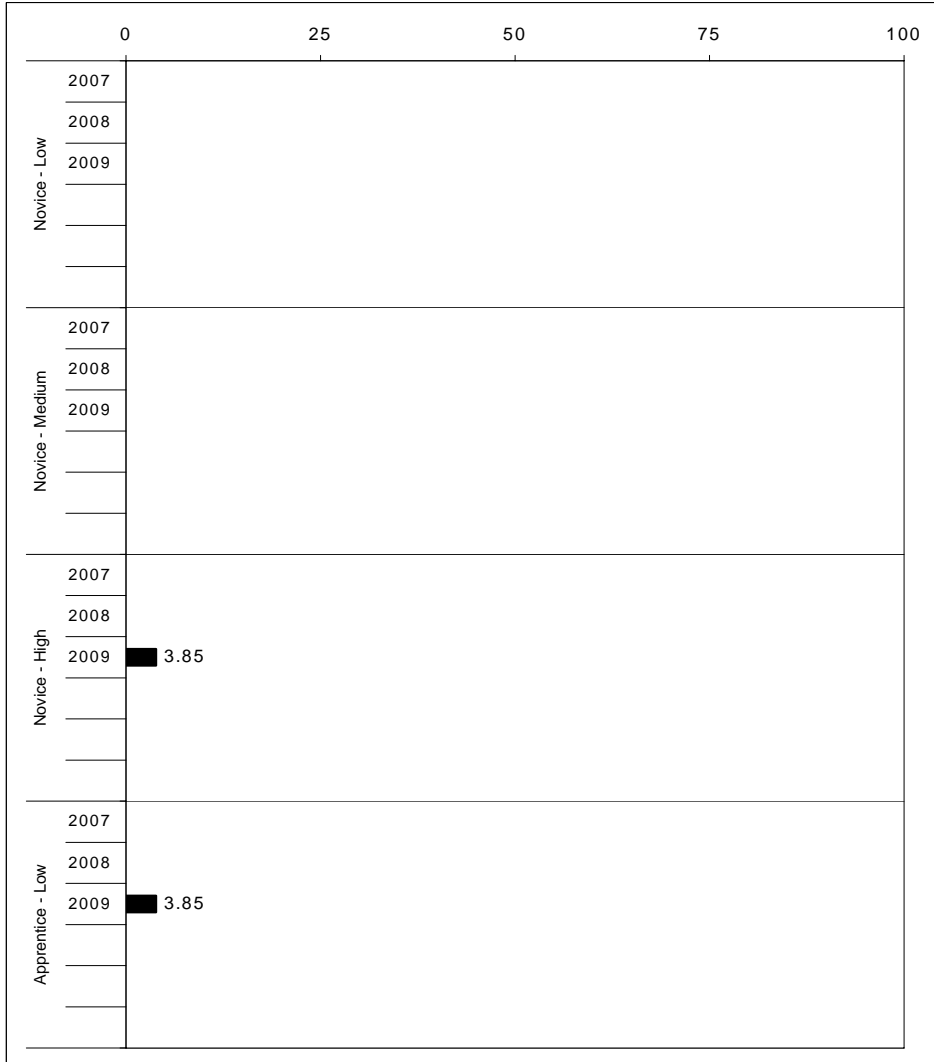
School: Woodstock Elementary School  
 District: Pulaski County  
 Code: 501560  
 Grade: 05

	No. Items	No. Observations	SCHOOL							Mean	Std. Err.	No. Observations	STATE							Mean	School -State Mean
			B	0	1	2	3	4	Percents				B	0	1	2	3	4	Percents		
<b>OPEN RESPONSE</b>																					
1.x.x - Number Prop Oper	4	29	0	3	31	7	10	48	2.7	0.2	73,199	0	8	20	18	25	29	2.5	0.2		
2.x.x - Measurement	1	3							***		8,380	0	37	30	13	10	11	1.3			
3.x.x - Geometry	2	22	0	0	18	41	41	0	2.2	0.2	56,900	0	6	24	30	26	14	2.2	0.0		
4.x.x - Data Analysis & Probabilit	1	19	0	11	37	16	11	26	2.1	0.3	48,828	0	15	18	15	17	35	2.4	-0.3		
5.x.x - Algebraic Thinking	1	3							***		8,005	0	13	15	20	17	35	2.5			
<b>MULTIPLE CHOICE</b>																					
1.x.x - Number Prop Oper	29	250	64	36	0				0.64	0.03	643,144	63	37	0				0.63	0.01		
2.x.x - Measurement	9	60	53	47	0				0.53	0.06	154,489	62	38	0				0.62	-0.09		
3.x.x - Geometry	14	108	79	21	0				0.79	0.04	276,516	78	22	0				0.78	0.01		
4.x.x - Data Analysis & Probabilit	11	98	65	35	0				0.65	0.05	252,212	64	36	0				0.64	0.01		
5.x.x - Algebraic Thinking	10	95	70	31	0				0.69	0.05	244,140	65	35	0				0.65	0.04		



2008-2009  
**INTERIM PERFORMANCE REPORT**  
**SCIENCE TREND DATA**  
**Performance Level Percents**

School: Woodstock Elementary School  
 District: Pulaski County  
 Code: 501560  
 Grade: 04



The horizontal bar represents the percent of students scoring at a performance level within a particular year. Percentages may not sum to 100% due to rounding.



**2008-2009  
INTERIM PERFORMANCE REPORT  
SCIENCE DISAGGREGATION  
Performance Level Percents**

School: Woodstock Elementary School  
District: Pulaski County  
Code: 501560  
Grade: 04

		0%	10%	20%	30%	40%	50%	60%	70%	80%	90%	100%	N%	A%	P%	D%	P+D%	
All Students	Tested	4	11	39				46					<b>Tested Students</b>					
	100 Days	4	12	35				50					Total	4	11	39	46	85.71
Female	Tested	9	9	27				55					Female	9	9	27	55	81.82
	100 Days	10	10	20				60					Male	0	12	47	41	88.24
Male	Tested	12	47				41					White (Non-Hispanic)	4	11	39	46	85.71	
	100 Days	13	44				44					African-American						
White (Non-Hispanic)	Tested	4	11	39				46					Hispanic					
	100 Days	4	12	35				50					Asian					
African-American	Tested																	
	100 Days																	
Hispanic	Tested																	
	100 Days																	
Asian	Tested																	
	100 Days																	
Migrant	Tested																	
	100 Days																	
Identified LEP	Tested																	
	100 Days																	
Free/Reduced Lunch Approved	Tested	5	14	41				41					Other					
	100 Days	5	15	35				45					Title I	4	12	35	50	84.62
Disability	Tested																	
	100 Days																	

	N%	A%	P%	D%	P+D%
<b>Tested Students</b>					
Total	4	11	39	46	85.71
Female	9	9	27	55	81.82
Male	0	12	47	41	88.24
White (Non-Hispanic)	4	11	39	46	85.71
African-American					
Hispanic					
Asian					
Other					
Title I	4	11	39	46	85.71
Migrant					
Identified LEP					
Extended Sch Services	4	11	39	46	85.71
Gifted/Talented	Unreportable*				
F/R Lunch Approved	5	14	41	41	81.82
Vocational/2 Credits					
Disability	Unreportable*				
Alternate Assessment					
<b>100 Day Students</b>					
Total	4	12	35	50	84.62
Female	10	10	20	60	80.00
Male	0	13	44	44	87.50
White (Non-Hispanic)	4	12	35	50	84.62
African-American					
Hispanic					
Asian					
Other					
Title I	4	12	35	50	84.62
Migrant					
Identified LEP					
Extended Sch Services	4	12	35	50	84.62
Gifted/Talented	Unreportable*				
F/R Lunch Approved	5	15	35	45	80.00
Vocational/2 Credits					
Disability	Unreportable*				
Alternate Assessment					

■ Novice
■ Apprentice
■ Proficient
■ Distinguished

Percentage may not sum to 100% due to rounding. 'Unreportable\*' indicates subpopulations with fewer than 10 students or subpopulations where all students score at the same performance level.



**2008-2009**  
**INTERIM PERFORMANCE REPORT**  
**SCIENCE CORE CONTENT**

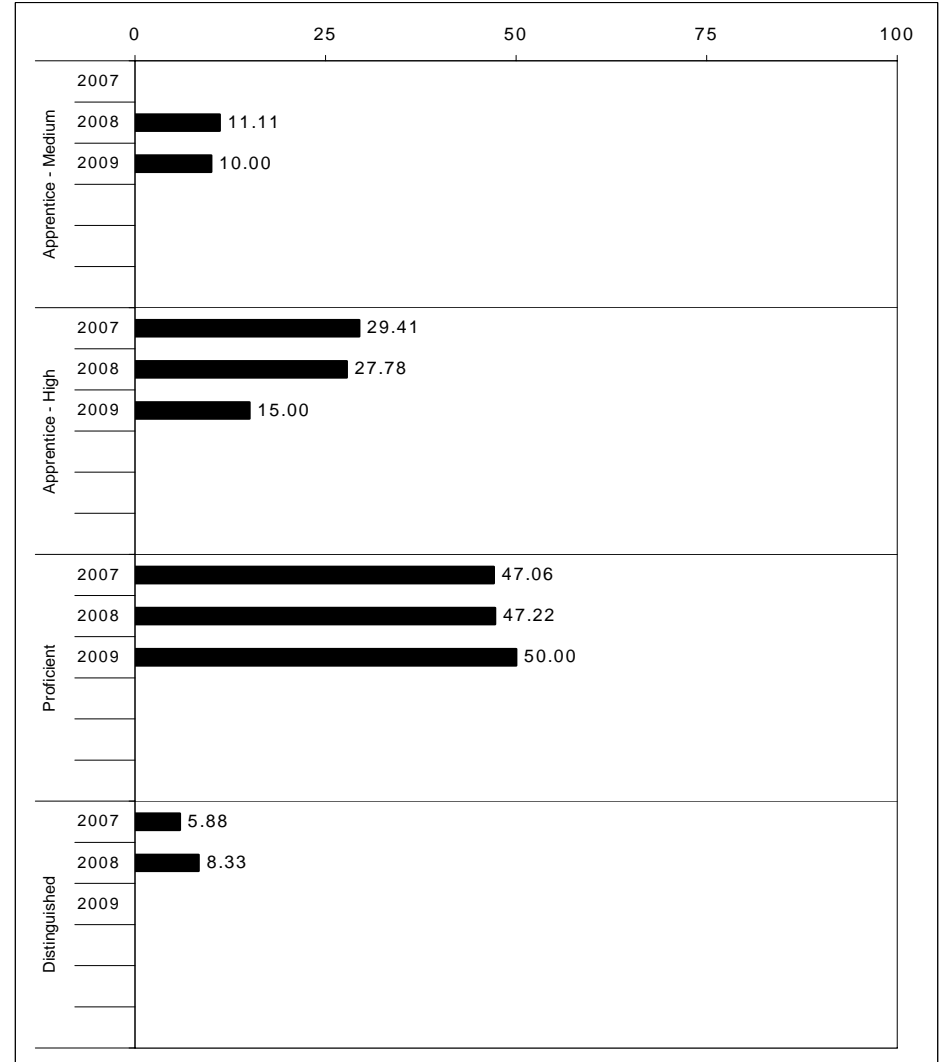
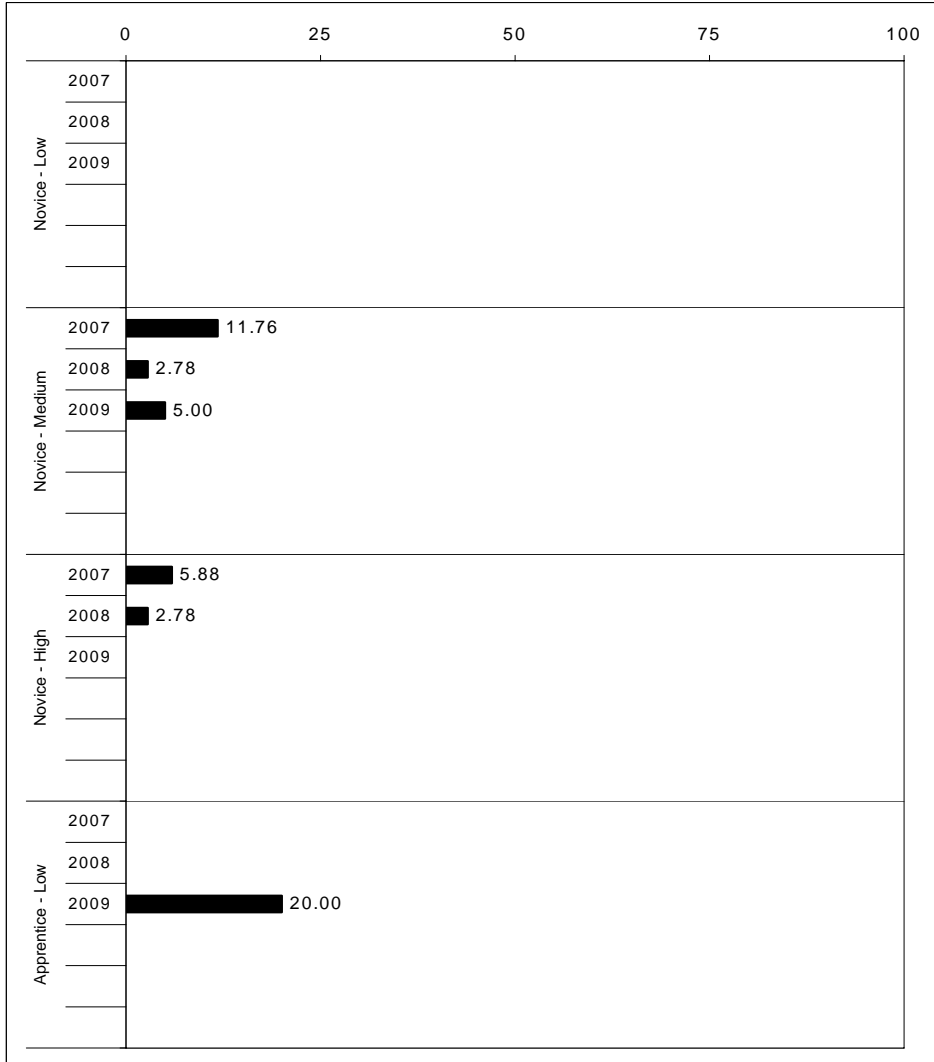
School: Woodstock Elementary School  
 District: Pulaski County  
 Code: 501560  
 Grade: 04

	No. Items	No. Observations	SCHOOL							Mean	Std. Err.	No. Observations	STATE						Mean	School -State Mean
			B	0	1	2	3	4	B				0	1	2	3	4			
<b>OPEN RESPONSE</b>																				
1.x.x - Physical Science	2	9							***		16,337	0	17	19	42	17	5	1.7		
2.x.x - Earth Space Science	3	34	0	12	12	15	41	21	2.5	0.2	65,658	0	12	22	35	26	4	1.9	0.6	
3.x.x - Biological Science	3	35	0	0	11	29	54	6	2.5	0.2	65,506	0	2	11	33	44	9	2.5	0.0	
4.x.x - Unifying Concepts	2	31	0	3	16	16	45	19	2.6	0.2	57,508	0	3	13	33	35	15	2.5	0.1	
<b>MULTIPLE CHOICE</b>																				
1.x.x - Physical Science	18	208	89	11	0				0.89	0.03	393,336	82	18	0				0.81	0.08	
2.x.x - Earth Space Science	19	212	80	20	0				0.80	0.03	401,488	71	29	0				0.71	0.09	
3.x.x - Biological Science	22	246	92	9	0				0.91	0.03	467,138	78	22	0				0.78	0.13	
4.x.x - Unifying Concepts	14	170	87	14	0				0.86	0.03	319,534	84	15	0				0.84	0.02	



2008-2009  
**INTERIM PERFORMANCE REPORT**  
**SOCIAL STUDIES TREND DATA**  
**Performance Level Percents**

School: Woodstock Elementary School  
 District: Pulaski County  
 Code: 501560  
 Grade: 05



The horizontal bar represents the percent of students scoring at a performance level within a particular year. Percentages may not sum to 100% due to rounding.



2008-2009  
**INTERIM PERFORMANCE REPORT**  
**SOCIAL STUDIES DISAGGREGATION**  
**Performance Level Percents**

School: Woodstock Elementary School  
 District: Pulaski County  
 Code: 501560  
 Grade: 05

		0%	10%	20%	30%	40%	50%	60%	70%	80%	90%	100%	N%	A%	P%	D%	P+D%
All Students	Tested												<b>Tested Students</b>				
	100 Days												Total	5	45	50	0
Female	Tested												Female Unreportable*				
	100 Days												Male	8	50	42	0
Male	Tested												White (Non-Hispanic)				
	100 Days												African-American Unreportable*				
White (Non-Hispanic)	Tested												Hispanic				
	100 Days												Asian				
African-American	Tested												Other				
	100 Days												Title I	5	45	50	0
Hispanic	Tested												Migrant				
	100 Days												Identified LEP				
Asian	Tested												Extended Sch Services				
	100 Days												Gifted/Talented Unreportable*				
Migrant	Tested												F/R Lunch Approved				
	100 Days												Vocational/2 Credits				
Identified LEP	Tested												Disability Unreportable*				
	100 Days												Alternate Assessment Unreportable*				
Free/Reduced Lunch Approved	Tested												<b>100 Day Students</b>				
	100 Days												Total	5	45	50	0
Disability	Tested												Female Unreportable*				
	100 Days												Male	8	50	42	0
	Tested												White (Non-Hispanic)				
	100 Days												African-American Unreportable*				

<span style="color: red;">■</span>	Novice
<span style="color: orange;">■</span>	Apprentice
<span style="color: yellow;">■</span>	Proficient
<span style="color: green;">■</span>	Distinguished

Percentage may not sum to 100% due to rounding. 'Unreportable\*' indicates subpopulations with fewer than 10 students or subpopulations where all students score at the same performance level.



**2008-2009**  
**INTERIM PERFORMANCE REPORT**  
**SOCIAL STUDIES CORE CONTENT**

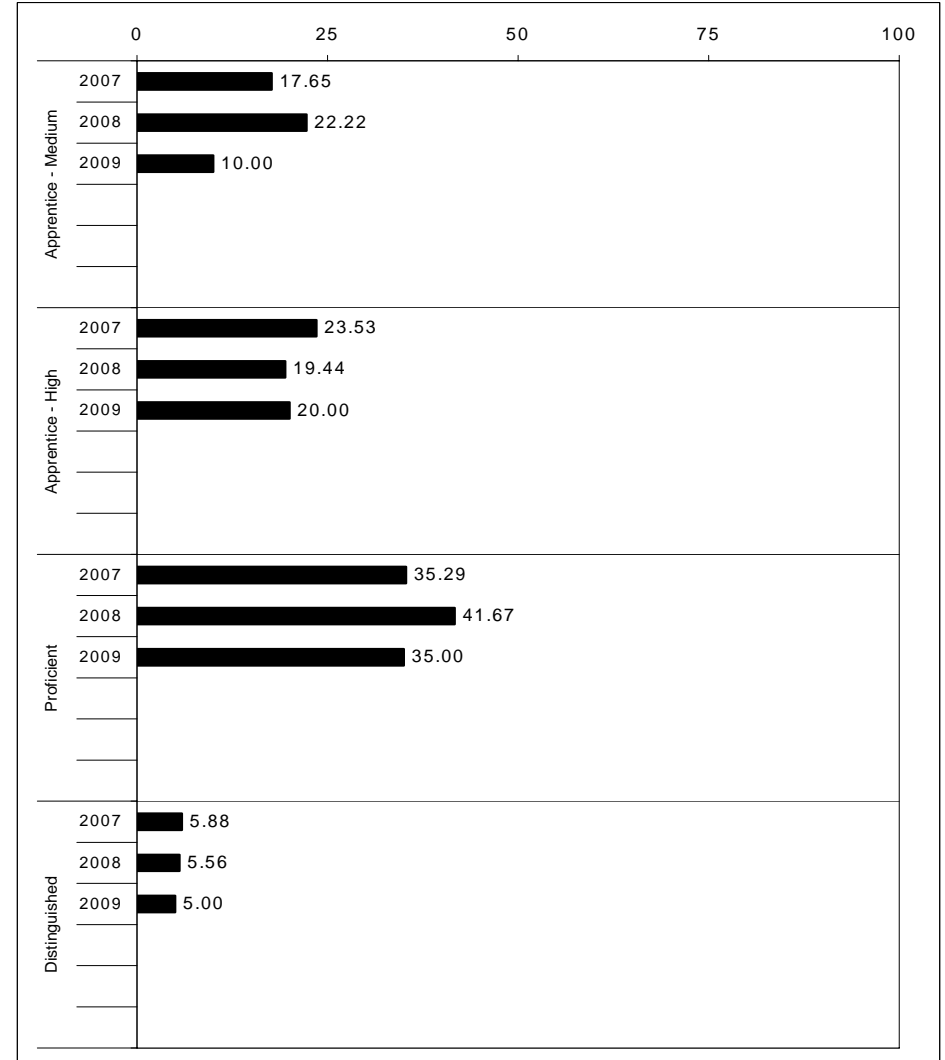
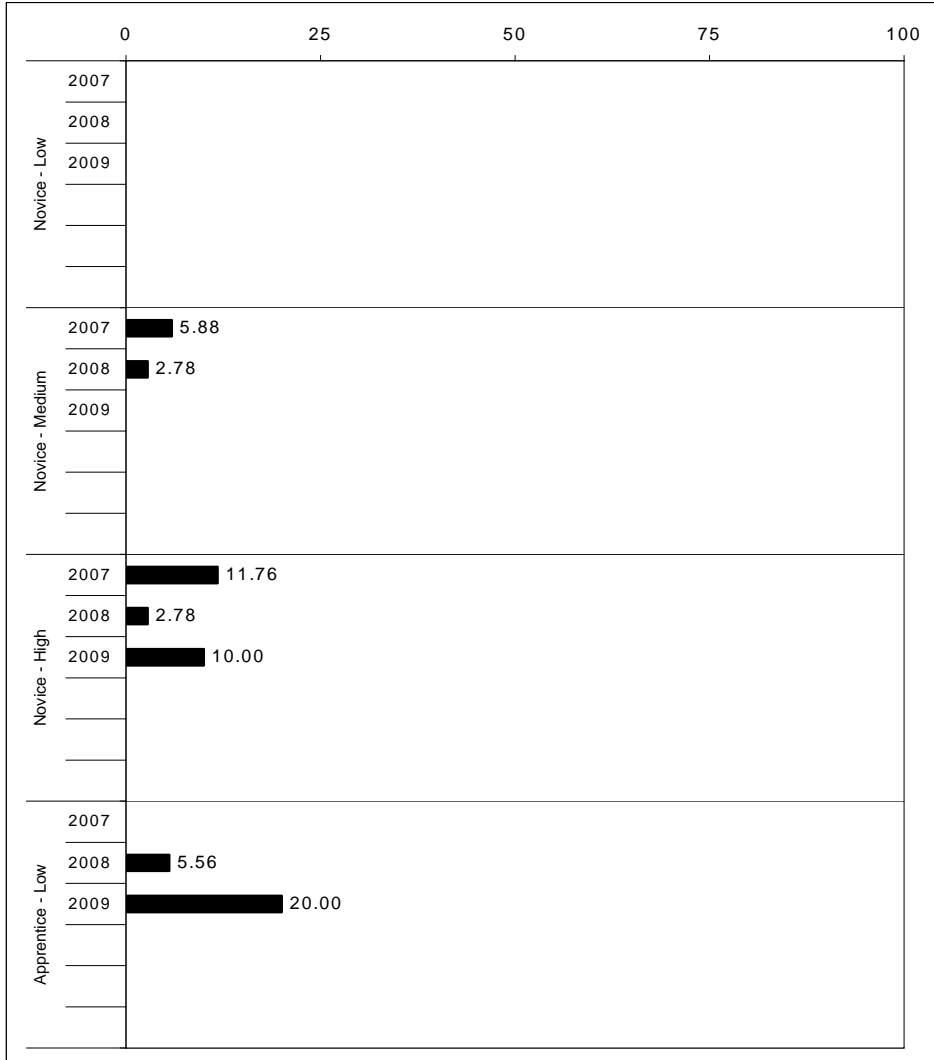
School: Woodstock Elementary School  
 District: Pulaski County  
 Code: 501560  
 Grade: 05

	No. Items	No. Observations	SCHOOL								Std. Err.	No. Observations	STATE								School -State Mean
			B	0	1	2	3	4	Mean	B			0	1	2	3	4	Mean			
<b>OPEN RESPONSE</b>																					
1.x.x - Government & Civics	2	22	0	5	50	41	5	0	1.5	0.2	56,903	0	5	37	45	10	2	1.7	-0.2		
2.x.x - Cultures & Societies	1	4							***		8,151	0	4	21	56	15	4	1.9			
3.x.x - Economics	1	19	0	5	32	58	5	0	1.6	0.2	48,828	0	11	33	41	12	3	1.6	0.0		
4.x.x - Geography	2	6							***		16,077	0	9	32	39	17	3	1.7			
5.x.x - Historical Perspective	3	25	0	12	36	48	4	0	1.4	0.2	65,353	0	7	35	46	10	2	1.7	-0.3		
<b>MULTIPLE CHOICE</b>																					
1.x.x - Government & Civics	14	124	56	44	0				0.56	0.04	317,571	66	34	0				0.66	-0.10		
2.x.x - Cultures & Societies	11	81	64	36	0				0.64	0.05	211,383	70	30	0				0.69	-0.05		
3.x.x - Economics	11	98	82	18	0				0.82	0.04	252,215	73	27	0				0.73	0.09		
4.x.x - Geography	16	146	68	32	0				0.68	0.04	374,337	66	34	0				0.66	0.02		
5.x.x - Historical Perspective	27	228	67	33	0				0.67	0.03	586,076	69	31	0				0.69	-0.02		



2008-2009  
**INTERIM PERFORMANCE REPORT**  
**WRITING ON-DEMAND TREND DATA**  
**Performance Level Percents**

School: Woodstock Elementary School  
 District: Pulaski County  
 Code: 501560  
 Grade: 05



The horizontal bar represents the percent of students scoring at a performance level within a particular year. Percentages may not sum to 100% due to rounding.



2008-2009  
**INTERIM PERFORMANCE REPORT**  
**WRITING ON-DEMAND DISAGGREGATION**  
**Performance Level Percents**

School: Woodstock Elementary School  
 District: Pulaski County  
 Code: 501560  
 Grade: 05

		0%	10%	20%	30%	40%	50%	60%	70%	80%	90%	100%	N%	A%	P%	D%	P+D%		
All Students	Tested	10	50						35			5							
	100 Days	10	50						35			5							
Female	Tested																		
	100 Days																		
Male	Tested	17	67					8		8									
	100 Days	17	67					8		8									
White (Non-Hispanic)	Tested	11	47				37			5									
	100 Days	11	47				37			5									
African-American	Tested																		
	100 Days																		
Hispanic	Tested																		
	100 Days																		
Asian	Tested																		
	100 Days																		
Migrant	Tested																		
	100 Days																		
Identified LEP	Tested																		
	100 Days																		
Free/Reduced Lunch Approved	Tested	7	50					36			7								
	100 Days	7	50					36			7								
Disability	Tested																		
	100 Days																		

		N%	A%	P%	D%	P+D%
<b>Tested Students</b>						
Total		10	50	35	5	40.00
Female	Unreportable*					
Male		17	67	8	8	16.67
White (Non-Hispanic)		11	47	37	5	42.11
African-American	Unreportable*					
Hispanic						
Asian						
Other						
Title I		10	50	35	5	40.00
Migrant						
Identified LEP						
Extended Sch Services						
Gifted/Talented	Unreportable*					
F/R Lunch Approved		7	50	36	7	42.86
Vocational/2 Credits						
Disability	Unreportable*					
Alternate Assessment	Unreportable*					
<b>100 Day Students</b>						
Total		10	50	35	5	40.00
Female	Unreportable*					
Male		17	67	8	8	16.67
White (Non-Hispanic)		11	47	37	5	42.11
African-American	Unreportable*					
Hispanic						
Asian						
Other						
Title I		10	50	35	5	40.00
Migrant						
Identified LEP						
Extended Sch Services						
Gifted/Talented	Unreportable*					
F/R Lunch Approved		7	50	36	7	42.86
Vocational/2 Credits						
Disability	Unreportable*					
Alternate Assessment	Unreportable*					

■ Novice
■ Apprentice
■ Proficient
■ Distinguished

Percentage may not sum to 100% due to rounding. 'Unreportable\*' indicates subpopulations with fewer than 10 students or subpopulations where all students score at the same performance level.



2008-2009  
**INTERIM PERFORMANCE REPORT**  
**WRITING ON-DEMAND CORE CONTENT**

School: Woodstock Elementary School  
 District: Pulaski County  
 Code: 501560  
 Grade: 05

WRITING PROMPT	SCHOOL											STATE								School -State Mean		
	No. Observations	Percents										Mean	Percents								Mean	
	B	0	1	2	3	4	5	6	7	8	Mean	B	0	1	2	3	4	5	6	7	8	Mean
Inform																						
1.X.X - Content	6																					
2.X.X - Structure	6																					
3.X.X - Convention	6																					
Narrate for a purpose																						
1.X.X - Content	6																					
2.X.X - Structure	6																					
3.X.X - Convention	6																					
Persuade																						
1.X.X - Content	7																					
2.X.X - Structure	7																					
3.X.X - Convention	7																					

MULTIPLE CHOICE	No. Items	SCHOOL							STATE					School -State Mean
		No. Observations	Percents			Mean	Std. Err.	No. Observations	Percents			Mean		
		Correct	Incorrect	Omit/Mult				Correct	Incorrect	Omit/Mult				
4.x.x - Writing Process	52	228	67	33	0	0.67	0.03	585,936	73	27	0	0.73	-0.06	
4.10.x - Revising	16	50	68	32	0	0.68	0.07	130,317	66	34	0	0.66	0.02	
4.11.x - Editing	36	178	66	34	0	0.66	0.03	455,619	75	24	0	0.75	-0.09	