



### Interim Performance Report

In March 2009, the Kentucky General Assembly passed Senate Bill 1 (SB1) that was subsequently signed into law by the Governor. SB1 calls for a significant overhaul of the state's assessment and accountability system. The new assessment system begins in the spring of 2012. The school years of 2008-2009, 2009-2010 and 2010-2011 are described in SB1 as an interim period. This three-year period allows Kentucky to develop the new assessment system and to carry on state and federal testing requirements.

The Interim Performance Report includes the Kentucky Core Content Test (KCCT) in Reading (grades 3-8 and 10), Mathematics (grades 3-8 and 11), Science (grades 4, 7 and 11), Social Studies (grades 5, 8 and 11) and Writing On-Demand (grades 5, 8 and 12). The KCCT is based on the Kentucky Core Content for Assessment (Version 4.1) and contains multiple choice and open response questions. The Writing On-Demand test uses writing prompts that require students to craft a piece of writing in a 60 minute period.

The KCCT is developed under the direction of content advisory committees of Kentucky educators who draft, review and select test questions. All test items are reviewed by a bias review committee to enhance the fairness of items for all Kentucky students.

The KCCT continues to fulfill the requirements of the federal statute known as the No Child Left Behind Act of 2001. A separate accountability report for No Child Left Behind (NCLB) is published by the Kentucky Department of Education.

The Interim Performance Report focuses entirely on the five state-required content areas and provides data for schools or districts. The data in this report is not used directly for state accountability; although, these results can fulfill the requirements of Senate Bill 168 from 2002 and may be used by schools or districts for their own local accountability needs.

Performance standards are based on descriptions of Novice, Apprentice, Proficient and Distinguished (NAPD) student performance levels specific to the content area and grade being assessed. The performance standards, in conjunction with Kentucky's Core Content for Assessment, should allow instruction to better focus on the content area to be taught and on how well students must demonstrate achievement in each content area.

#### Reporting Changes for 2009

Based on SB1, Kentucky will not be reporting state accountability and academic indices as in the past. The report does have several familiar pages with performance level (NAPD) trend, core content and disaggregation data per content area. Districts and schools will still see distributions of how students scored in the Novice (with sublevels), Apprentice (with sublevels), Proficient and Distinguished performance levels.

#### Confidentiality Changes

Due to federal regulations around the Family Education Rights and Privacy Act (FERPA), the numbers of students have been removed. Though there is a need to report as much data as possible, there is also a paramount need to maintain the confidential aspects of individual scores. When scores are reported in what is commonly called "small cells" where very few students may be categorized, there is the possibility of revealing individual scores when numbers are reported. Numbers are reported to each district in a confidential report that accompanies the public Interim Performance Report.

2008-2009

## INTERIM PERFORMANCE REPORT

School: Southern Elementary School

District: Pulaski County

Code: 501570

Grade: PRIMARY-05

### CONTENTS OF THIS REPORT

Introduction	1
Academic Trend Data	
Reading Results	2-8
Mathematics Results	9-15
Science Results	16-18
Social Studies Results	19-21
Writing Results	22-24

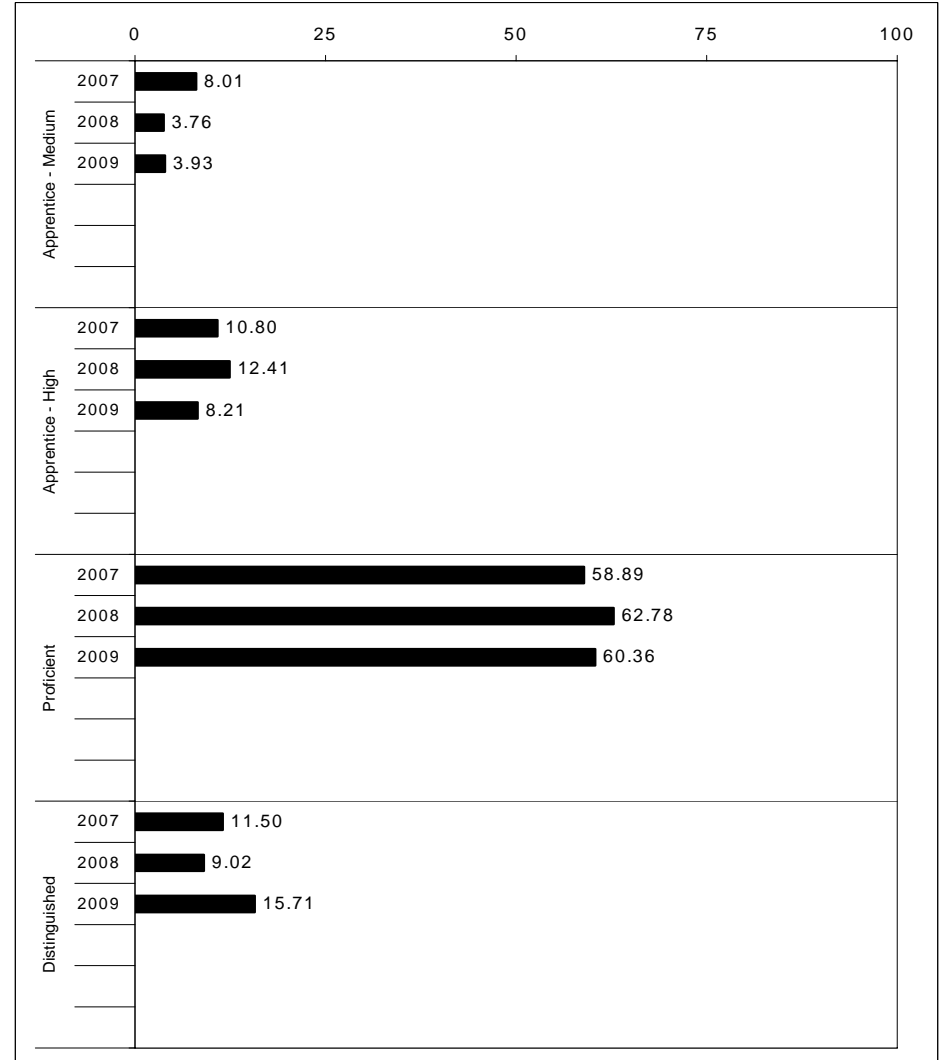
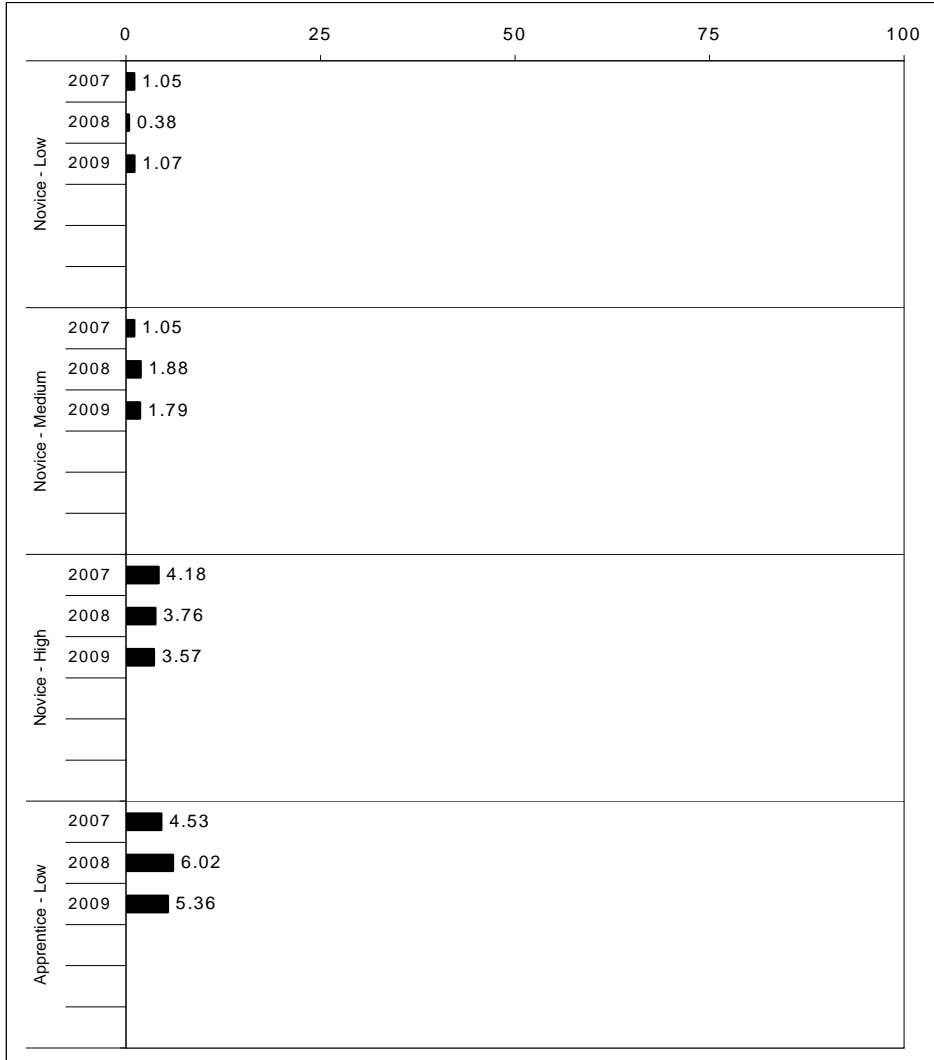
For more information, refer to the 2009 Interim Assessment Interpretative Guide on the Kentucky Department of Education Web site ([www.education.ky.gov](http://www.education.ky.gov)).





2008-2009  
**INTERIM PERFORMANCE REPORT**  
**READING TREND DATA**  
**Performance Level Percents**

School: Southern Elementary School  
 District: Pulaski County  
 Code: 501570  
 Grade: ELEMENTARY



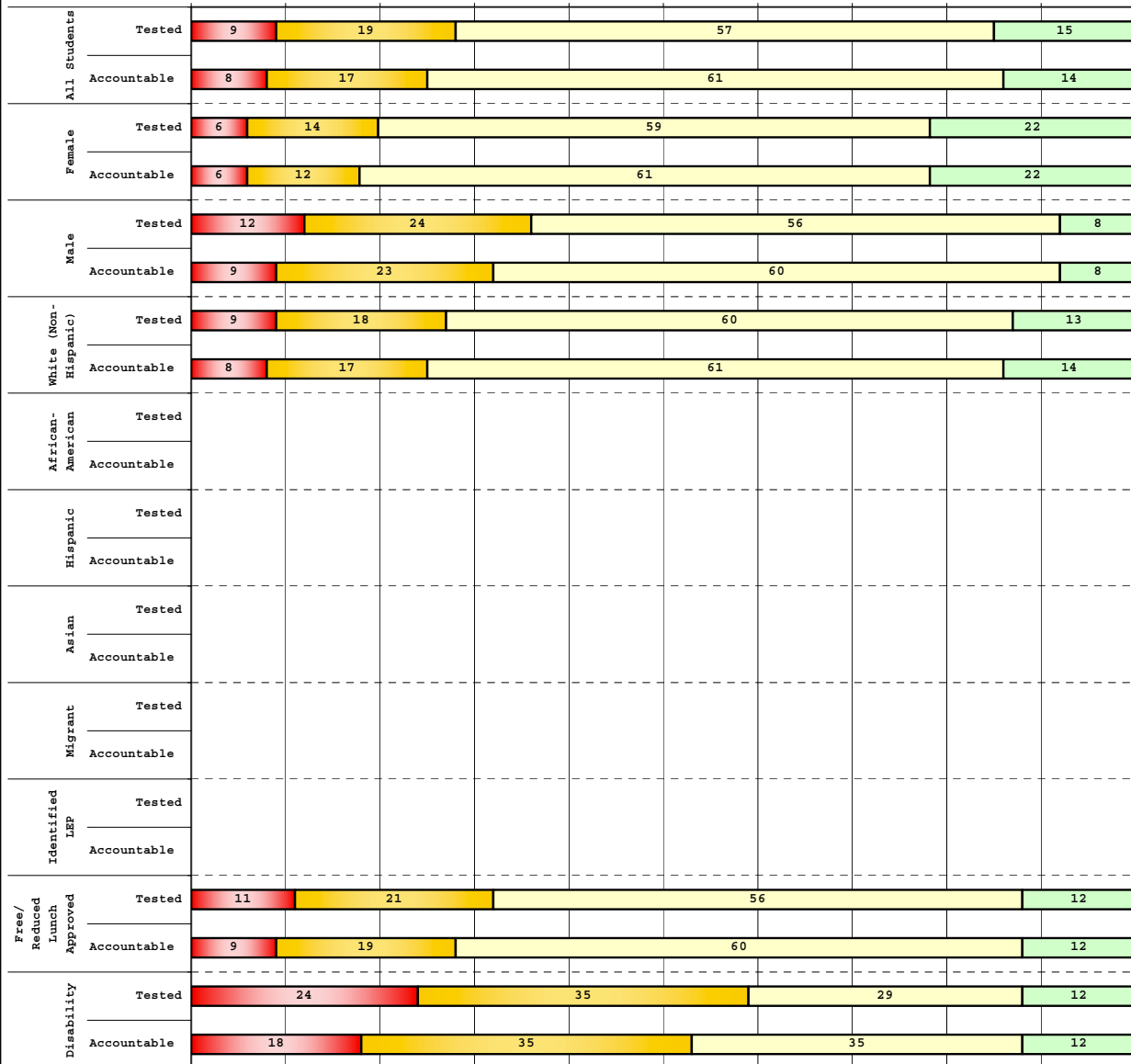
The horizontal bar represents the percent of students scoring at a performance level within a particular year. Percentages may not sum to 100% due to rounding.



**2008-2009  
INTERIM PERFORMANCE REPORT  
READING DISAGGREGATION  
Performance Level Percents**

School: Southern Elementary School  
District: Pulaski County  
Code: 501570  
Grade: 03

0% 10% 20% 30% 40% 50% 60% 70% 80% 90% 100%

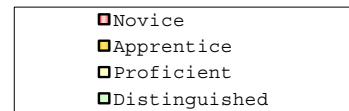


**Tested Students**

	N%	A%	P%	D%	P+D%
Total	9	19	57	15	71.82
Female	6	14	59	22	80.39
Male	12	24	56	8	64.41
White (Non-Hispanic)	9	18	60	13	72.73
African-American	Unreportable*				
Hispanic	Unreportable*				
Asian	Unreportable*				
Other	Unreportable*				
Title I	9	19	57	15	71.82
Migrant	Unreportable*				
Identified LEP	Unreportable*				
Extended Sch Services	20	36	44	0	44.00
Gifted/Talented	0	10	57	33	90.48
F/R Lunch Approved	11	21	56	12	68.29
Vocational/2 Credits					
Disability	24	35	29	12	41.18
Alternate Assessment	Unreportable*				

**NCLB Accountable Students**

	N%	A%	P%	D%	P+D%
Total	8	17	61	14	75.00
Female	6	12	61	22	82.35
Male	9	23	60	8	67.92
White (Non-Hispanic)	8	17	61	14	75.00
African-American	Unreportable*				
Hispanic	Unreportable*				
Asian	Unreportable*				
Other	Unreportable*				
Title I	8	17	61	14	75.00
Migrant	Unreportable*				
Identified LEP	Unreportable*				
Extended Sch Services	19	35	46	0	46.15
Gifted/Talented	0	10	57	33	90.48
F/R Lunch Approved	9	19	60	12	71.43
Vocational/2 Credits					
Disability	18	35	35	12	47.06
Alternate Assessment	Unreportable*				



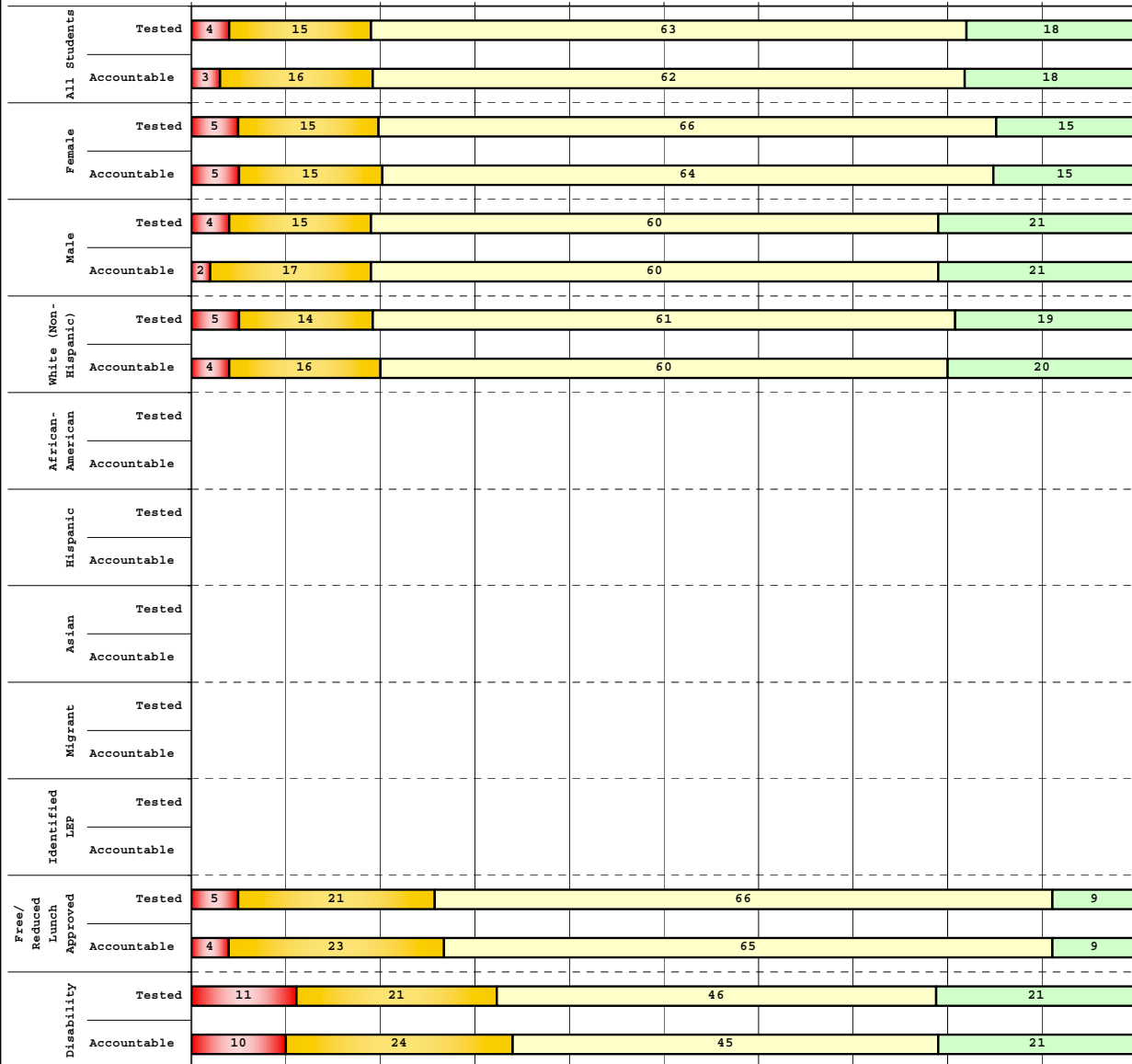
Percentage may not sum to 100% due to rounding. 'Unreportable\*' indicates subpopulations with fewer than 10 students or subpopulations where all students score at the same performance level.



**2008-2009  
INTERIM PERFORMANCE REPORT  
READING DISAGGREGATION  
Performance Level Percents**

School: Southern Elementary School  
District: Pulaski County  
Code: 501570  
Grade: 04

0% 10% 20% 30% 40% 50% 60% 70% 80% 90% 100%



	N%	A%	P%	D%	P+D%
<b>Tested Students</b>					
Total	4	15	63	18	80.90
Female	5	15	66	15	80.49
Male	4	15	60	21	81.25
White (Non-Hispanic)	5	14	61	19	80.72
African-American	Unreportable*				
Hispanic	Unreportable*				
Asian					
Other					
Title I	4	15	63	18	80.90
Migrant	Unreportable*				
Identified LEP	Unreportable*				
Extended Sch Services	Unreportable*				
Gifted/Talented	0	3	52	45	96.55
F/R Lunch Approved	5	21	66	9	74.14
Vocational/2 Credits					
Disability	11	21	46	21	67.86
Alternate Assessment					
<b>NCLB Accountable Students</b>					
Total	3	16	62	18	80.46
Female	5	15	64	15	79.49
Male	2	17	60	21	81.25
White (Non-Hispanic)	4	16	60	20	80.25
African-American	Unreportable*				
Hispanic	Unreportable*				
Asian					
Other					
Title I	3	16	62	18	80.46
Migrant	Unreportable*				
Identified LEP	Unreportable*				
Extended Sch Services	Unreportable*				
Gifted/Talented	0	4	54	43	96.43
F/R Lunch Approved	4	23	65	9	73.68
Vocational/2 Credits					
Disability	10	24	45	21	65.52
Alternate Assessment					

<span style="color:red">■</span> Novice
<span style="color:orange">■</span> Apprentice
<span style="color:green">■</span> Proficient
<span style="color:lightgreen">■</span> Distinguished

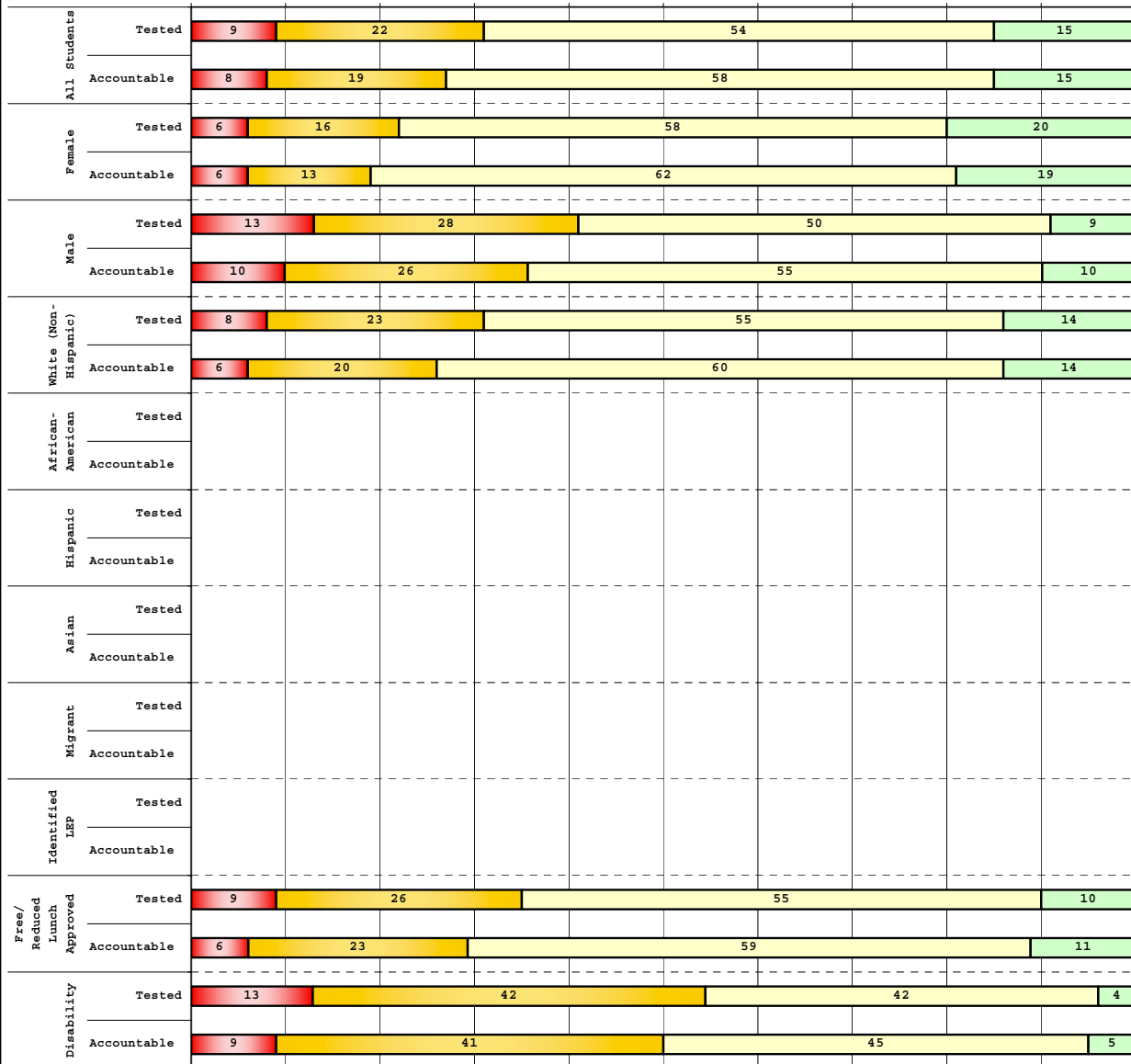
Percentage may not sum to 100% due to rounding. 'Unreportable\*' indicates subpopulations with fewer than 10 students or subpopulations where all students score at the same performance level.



**2008-2009  
INTERIM PERFORMANCE REPORT  
READING DISAGGREGATION  
Performance Level Percents**

School: Southern Elementary School  
District: Pulaski County  
Code: 501570  
Grade: 05

0% 10% 20% 30% 40% 50% 60% 70% 80% 90% 100%



**Tested Students**

	N%	A%	P%	D%	P+D%
Total	9	22	54	15	68.75
Female	6	16	58	20	78.00
Male	13	28	50	9	58.70
White (Non-Hispanic)	8	23	55	14	69.57
African-American	Unreportable*				
Hispanic	Unreportable*				
Asian					
Other					
Title I	9	22	54	15	68.75
Migrant	Unreportable*				
Identified LEP	Unreportable*				
Extended Sch Services	27	45	27	0	27.27
Gifted/Talented	0	4	63	33	95.83
F/R Lunch Approved	9	26	55	10	65.22
Vocational/2 Credits					
Disability	13	42	42	4	45.83
Alternate Assessment					

**NCLB Accountable Students**

	N%	A%	P%	D%	P+D%
Total	8	19	58	15	73.03
Female	6	13	62	19	80.85
Male	10	26	55	10	64.29
White (Non-Hispanic)	6	20	60	14	74.12
African-American	Unreportable*				
Hispanic	Unreportable*				
Asian					
Other					
Title I	8	19	58	15	73.03
Migrant					
Identified LEP	Unreportable*				
Extended Sch Services	27	45	27	0	27.27
Gifted/Talented	0	4	63	33	95.83
F/R Lunch Approved	6	23	59	11	70.31
Vocational/2 Credits					
Disability	9	41	45	5	50.00
Alternate Assessment					

<span style="color:red">■</span> Novice
<span style="color:yellow">■</span> Apprentice
<span style="color:lightgreen">■</span> Proficient
<span style="color:darkgreen">■</span> Distinguished

Percentage may not sum to 100% due to rounding. 'Unreportable\*' indicates subpopulations with fewer than 10 students or subpopulations where all students score at the same performance level.



**2008-2009**  
**INTERIM PERFORMANCE REPORT**  
**READING CORE CONTENT**

School: Southern Elementary School  
 District: Pulaski County  
 Code: 501570  
 Grade: 03

	No. Items	No. Observations	SCHOOL								Std. Err.	No. Observations	STATE								School -State Mean
			B	0	1	2	3	4	Mean	B			0	1	2	3	4	Mean			
<b>OPEN RESPONSE</b>																					
2.0.x - Developing Understanding	2	206	0	11	32	44	13	0	1.6	0.1	100,212	0	10	30	44	14	2	1.7	-0.1		
3.0.x - Interpreting Text	2	206	0	11	32	44	13	0	1.6	0.1	100,212	0	10	30	44	14	2	1.7	-0.1		
<b>MULTIPLE CHOICE</b>																					
1.0.x - Forming a Foundation	32	807	80	20	0				0.80	0.01	392,589	83	17	0				0.83	-0.03		
2.0.x - Developing Understanding	89	2,048	77	23	0				0.76	0.01	993,477	80	20	0				0.80	-0.04		
3.0.x - Interpreting Text	31	965	74	26	0				0.74	0.01	468,115	77	23	0				0.77	-0.03		
5.0.x - Critical Stance	15	417	75	25	0				0.75	0.02	208,359	79	21	0				0.79	-0.04		



**2008-2009**  
**INTERIM PERFORMANCE REPORT**  
**READING CORE CONTENT**

School: Southern Elementary School  
 District: Pulaski County  
 Code: 501570  
 Grade: 04

	No. Items	No. Observations	SCHOOL								STATE								School -State Mean
			B	0	1	2	3	4	Mean	Std. Err.	No. Observations	B	0	1	2	3	4	Mean	
<b>OPEN RESPONSE</b>																			
2.0.x - Developing Understanding	5	145	0	4	19	55	17	4	2.0	0.1	81,849	0	3	24	52	18	3	1.9	0.1
3.0.x - Interpreting Text	6	233	0	3	17	51	25	5	2.1	0.1	131,199	0	4	22	45	23	5	2.0	0.1
<b>MULTIPLE CHOICE</b>																			
1.0.x - Forming a Foundation	34	713	75	25	0				0.75	0.02	401,452	72	28	0				0.71	0.04
2.0.x - Developing Understanding	76	1,547	76	24	0				0.76	0.01	868,422	73	27	0				0.73	0.03
3.0.x - Interpreting Text	29	477	80	21	0				0.79	0.02	278,648	79	21	0				0.79	0.00
5.0.x - Critical Stance	9	273	77	22	0				0.77	0.03	155,704	74	26	0				0.74	0.03



**2008-2009  
INTERIM PERFORMANCE REPORT  
READING CORE CONTENT**

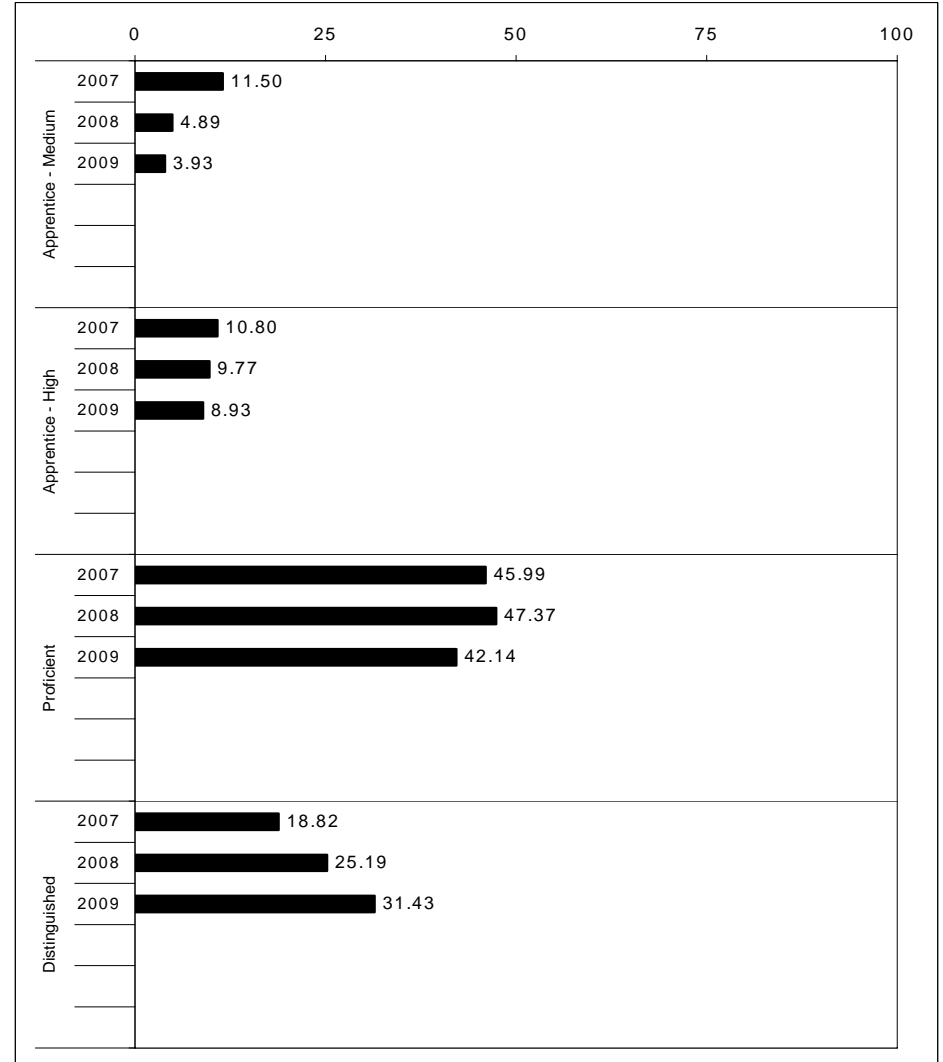
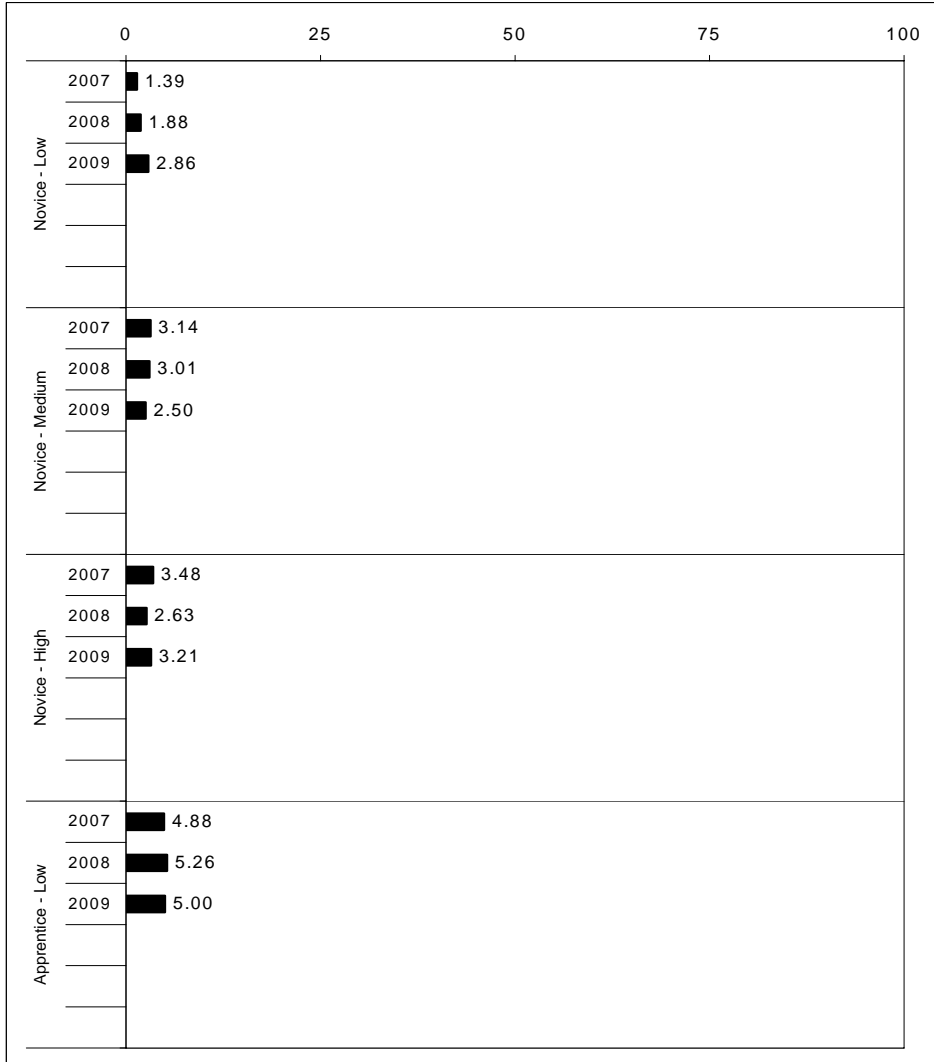
School: Southern Elementary School  
 District: Pulaski County  
 Code: 501570  
 Grade: 05

	No. Items	No. Observations	SCHOOL							Mean	Std. Err.	No. Observations	STATE							Mean	School -State Mean
			B	0	1	2	3	4	B				0	1	2	3	4				
<b>OPEN RESPONSE</b>																					
2.0.x - Developing Understanding	6	166	0	4	17	52	18	9	2.1	0.1	89,507	0	5	23	48	20	5	2.0	0.1		
3.0.x - Interpreting Text	6	234	0	6	18	53	18	6	2.0	0.1	130,403	0	5	21	50	19	4	2.0	0.0		
<b>MULTIPLE CHOICE</b>																					
1.0.x - Forming a Foundation	28	490	73	27	0				0.73	0.02	268,187	74	26	0				0.74	-0.01		
2.0.x - Developing Understanding	71	1,481	79	21	0				0.79	0.01	823,068	80	20	0				0.80	-0.01		
3.0.x - Interpreting Text	27	639	82	18	0				0.82	0.02	341,653	81	19	0				0.81	0.01		
5.0.x - Critical Stance	17	549	75	25	0				0.74	0.02	300,671	75	25	0				0.75	-0.01		



2008-2009  
**INTERIM PERFORMANCE REPORT**  
**MATHEMATICS TREND DATA**  
**Performance Level Percents**

School: Southern Elementary School  
 District: Pulaski County  
 Code: 501570  
 Grade: ELEMENTARY



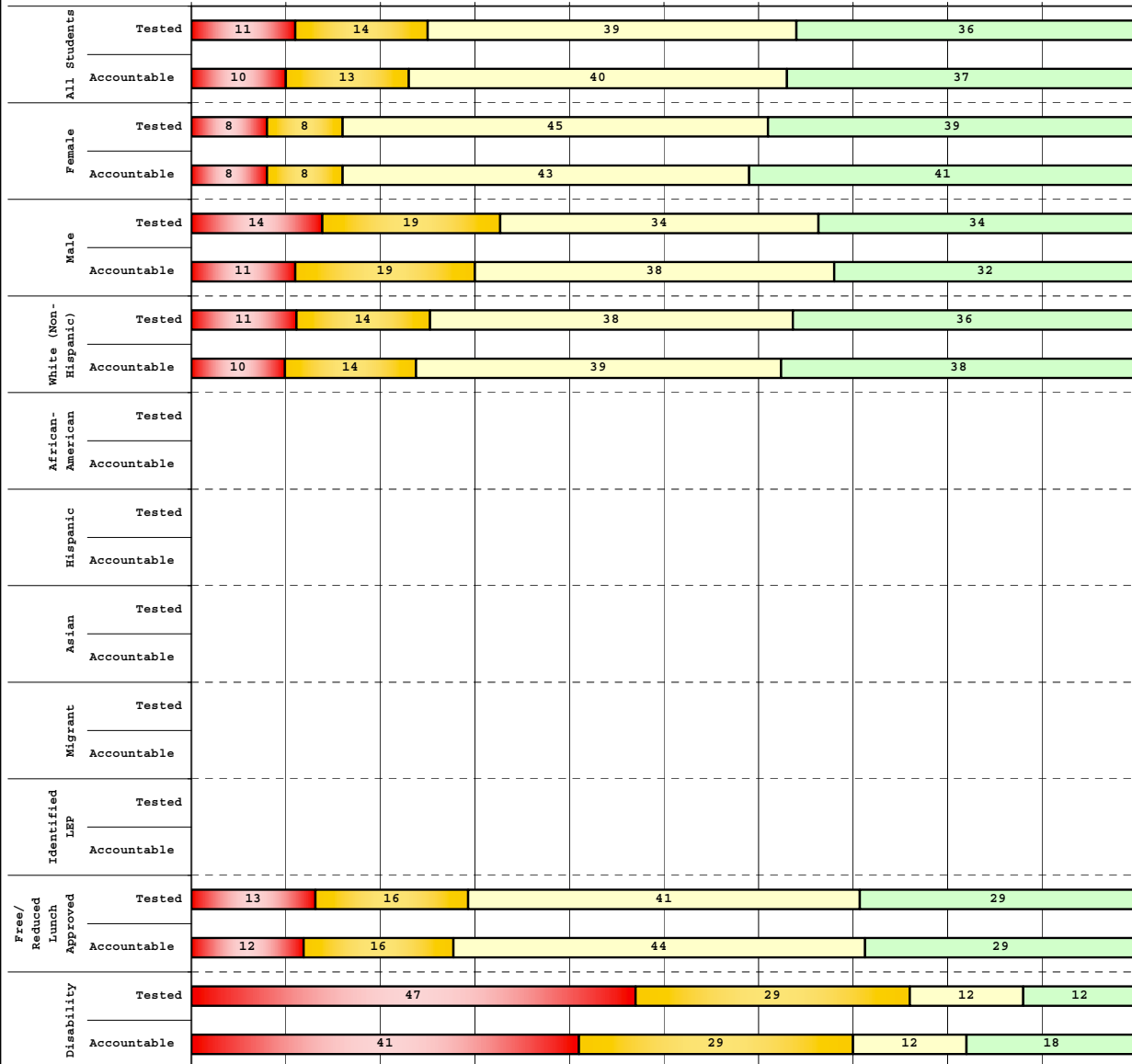
The horizontal bar represents the percent of students scoring at a performance level within a particular year. Percentages may not sum to 100% due to rounding.



**2008-2009  
INTERIM PERFORMANCE REPORT  
MATHEMATICS DISAGGREGATION  
Performance Level Percents**

School: Southern Elementary School  
District: Pulaski County  
Code: 501570  
Grade: 03

0% 10% 20% 30% 40% 50% 60% 70% 80% 90% 100%

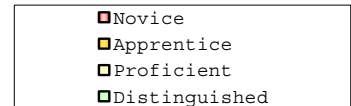


**Tested Students**

	N%	A%	P%	D%	P+D%
Total	11	14	39	36	75.45
Female	8	8	45	39	84.31
Male	14	19	34	34	67.80
White (Non-Hispanic)	11	14	38	36	74.75
African-American	Unreportable*				
Hispanic	Unreportable*				
Asian	Unreportable*				
Other	Unreportable*				
Title I	11	14	39	36	75.45
Migrant	Unreportable*				
Identified LEP	Unreportable*				
Extended Sch Services	24	20	48	8	56.00
Gifted/Talented	0	5	29	67	95.24
F/R Lunch Approved	13	16	41	29	70.73
Vocational/2 Credits					
Disability	47	29	12	12	23.53
Alternate Assessment	Unreportable*				

**NCLB Accountable Students**

	N%	A%	P%	D%	P+D%
Total	10	13	40	37	76.92
Female	8	8	43	41	84.31
Male	11	19	38	32	69.81
White (Non-Hispanic)	10	14	39	38	76.04
African-American	Unreportable*				
Hispanic	Unreportable*				
Asian	Unreportable*				
Other	Unreportable*				
Title I	10	13	40	37	76.92
Migrant	Unreportable*				
Identified LEP	Unreportable*				
Extended Sch Services	23	19	46	12	57.69
Gifted/Talented	0	5	29	67	95.24
F/R Lunch Approved	12	16	44	29	72.73
Vocational/2 Credits					
Disability	41	29	12	18	29.41
Alternate Assessment	Unreportable*				



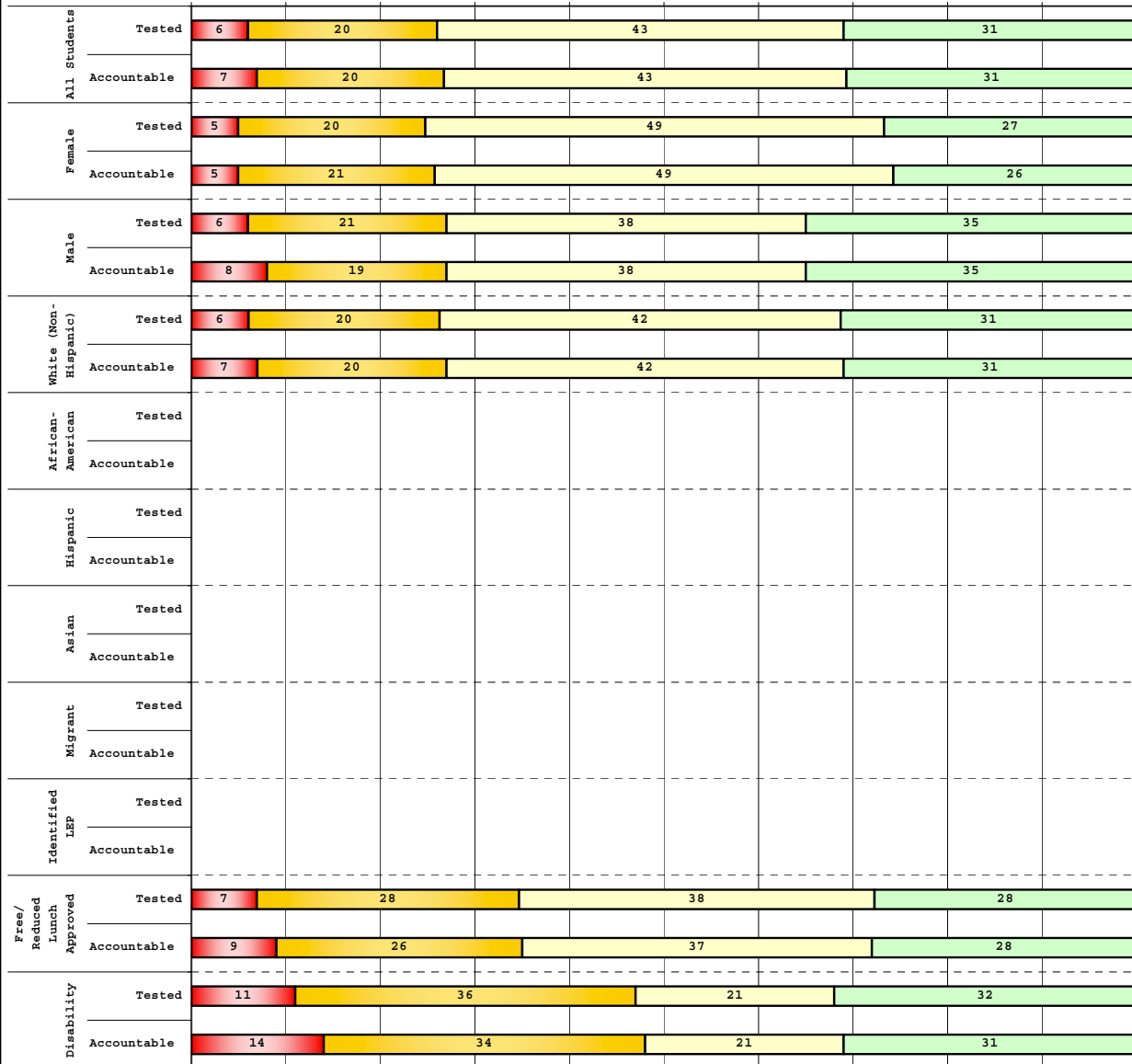
Percentage may not sum to 100% due to rounding. 'Unreportable\*' indicates subpopulations with fewer than 10 students or subpopulations where all students score at the same performance level.



2008-2009  
**INTERIM PERFORMANCE REPORT**  
**MATHEMATICS DISAGGREGATION**  
**Performance Level Percents**

School: Southern Elementary School  
 District: Pulaski County  
 Code: 501570  
 Grade: 04

0% 10% 20% 30% 40% 50% 60% 70% 80% 90% 100%

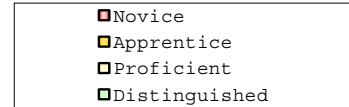


**Tested Students**

	N%	A%	P%	D%	P+D%
Total	6	20	43	31	74.16
Female	5	20	49	27	75.61
Male	6	21	38	35	72.92
White (Non-Hispanic)	6	20	42	31	73.49
African-American	Unreportable*				
Hispanic	Unreportable*				
Asian					
Other					
Title I	6	20	43	31	74.16
Migrant	Unreportable*				
Identified LEP	Unreportable*				
Extended Sch Services	Unreportable*				
Gifted/Talented	0	3	24	72	96.55
F/R Lunch Approved	7	28	38	28	65.52
Vocational/2 Credits					
Disability	11	36	21	32	53.57
Alternate Assessment					

**NCLB Accountable Students**

	N%	A%	P%	D%	P+D%
Total	7	20	43	31	73.56
Female	5	21	49	26	74.36
Male	8	19	38	35	72.92
White (Non-Hispanic)	7	20	42	31	72.84
African-American	Unreportable*				
Hispanic	Unreportable*				
Asian					
Other					
Title I	7	20	43	31	73.56
Migrant	Unreportable*				
Identified LEP	Unreportable*				
Extended Sch Services	Unreportable*				
Gifted/Talented	0	4	25	71	96.43
F/R Lunch Approved	9	26	37	28	64.91
Vocational/2 Credits					
Disability	14	34	21	31	51.72
Alternate Assessment					



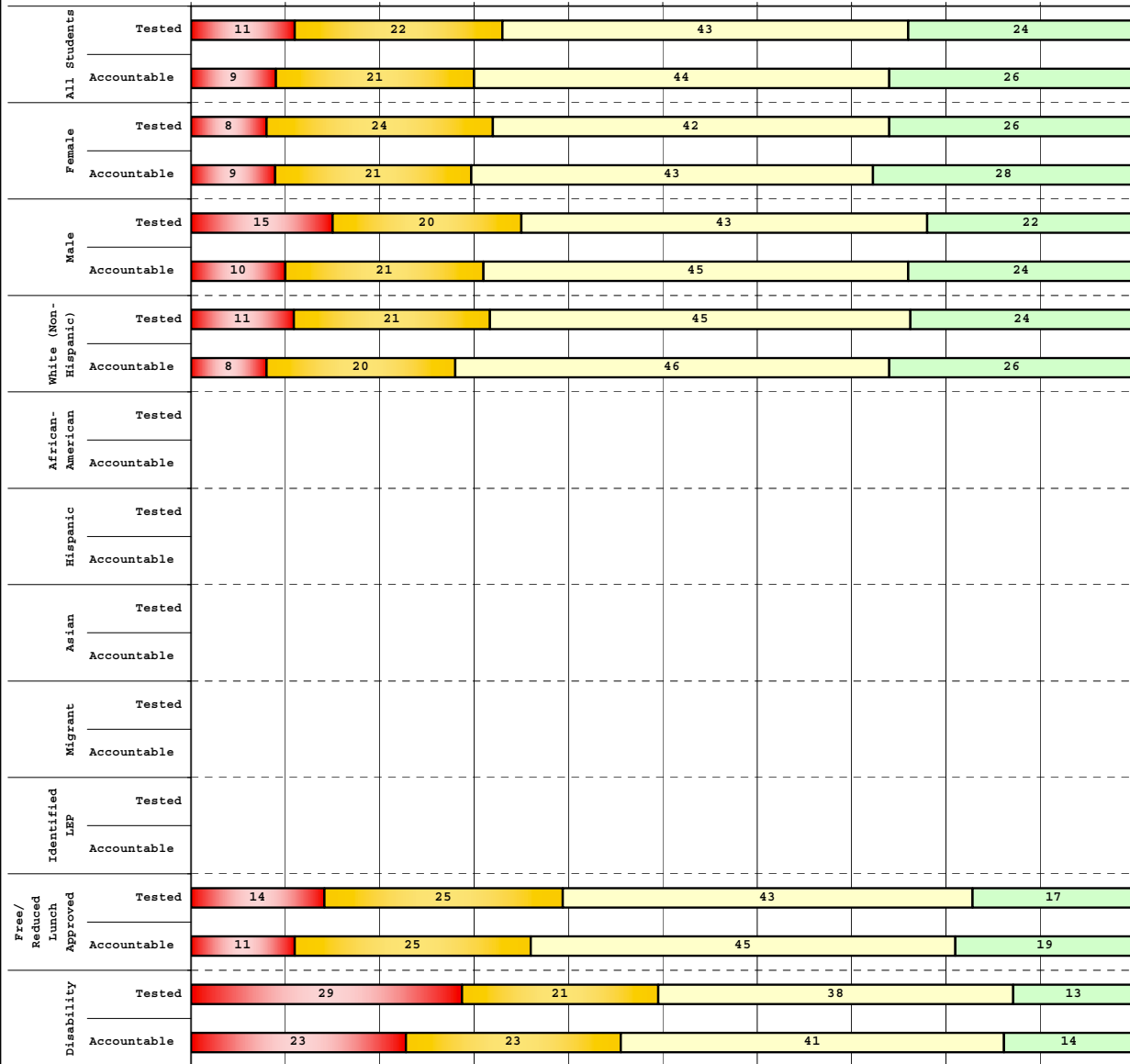
Percentage may not sum to 100% due to rounding. 'Unreportable\*' indicates subpopulations with fewer than 10 students or subpopulations where all students score at the same performance level.



2008-2009  
**INTERIM PERFORMANCE REPORT**  
**MATHEMATICS DISAGGREGATION**  
**Performance Level Percents**

School: Southern Elementary School  
 District: Pulaski County  
 Code: 501570  
 Grade: 05

0% 10% 20% 30% 40% 50% 60% 70% 80% 90% 100%



	N%	A%	P%	D%	P+D%
<b>Tested Students</b>					
Total	11	22	43	24	66.67
Female	8	24	42	26	68.00
Male	15	20	43	22	65.22
White (Non-Hispanic)	11	21	45	24	68.48
African-American	Unreportable*				
Hispanic	Unreportable*				
Asian					
Other					
Title I	11	22	43	24	66.67
Migrant	Unreportable*				
Identified LEP	Unreportable*				
Extended Sch Services	18	45	18	18	36.36
Gifted/Talented	0	13	29	58	87.50
F/R Lunch Approved	14	25	43	17	60.87
Vocational/2 Credits					
Disability	29	21	38	13	50.00
Alternate Assessment					
<b>NCLB Accountable Students</b>					
Total	9	21	44	26	69.66
Female	9	21	43	28	70.21
Male	10	21	45	24	69.05
White (Non-Hispanic)	8	20	46	26	71.76
African-American	Unreportable*				
Hispanic	Unreportable*				
Asian					
Other					
Title I	9	21	44	26	69.66
Migrant					
Identified LEP	Unreportable*				
Extended Sch Services	18	45	18	18	36.36
Gifted/Talented	0	13	29	58	87.50
F/R Lunch Approved	11	25	45	19	64.06
Vocational/2 Credits					
Disability	23	23	41	14	54.55
Alternate Assessment					

<span style="color: red;">■</span> Novice
<span style="color: orange;">■</span> Apprentice
<span style="color: yellow;">■</span> Proficient
<span style="color: green;">■</span> Distinguished

Percentage may not sum to 100% due to rounding. 'Unreportable\*' indicates subpopulations with fewer than 10 students or subpopulations where all students score at the same performance level.



**2008-2009**  
**INTERIM PERFORMANCE REPORT**  
**MATHEMATICS CORE CONTENT**

School: Southern Elementary School  
 District: Pulaski County  
 Code: 501570  
 Grade: 03

	No. Items	No. Observations	SCHOOL								STATE								School -State Mean
			Percents						Mean	Std. Err.	Percents						Mean		
			B	0	1	2	3	4					No. Observations	B	0	1		2	3
<b>OPEN RESPONSE</b>																			
1.x.x - Number Prop Oper	5	259	0	25	34	28	7	6	1.4	0.1	125,243	0	21	35	26	10	8	1.5	-0.1
2.x.x - Measurement	1	17	0	35	12	29	6	18	1.6	0.4	8,325	0	25	5	30	14	25	2.1	-0.5
3.x.x - Geometry	2	33	0	9	30	18	12	30	2.2	0.2	16,777	0	8	24	35	13	20	2.1	0.1
4.x.x - Data Analysis & Probabilit	1	103	0	13	10	16	23	39	2.7	0.1	50,106	0	9	13	19	27	32	2.6	0.1
5.x.x - Algebraic Thinking	2	120	0	13	9	16	25	38	2.7	0.1	58,404	0	9	14	19	28	31	2.6	0.1
<b>MULTIPLE CHOICE</b>																			
1.x.x - Number Prop Oper	32	1,662	Correct	Incorrect	Omit/Mult				0.72	0.01	810,106	Correct	Incorrect	Omit/Mult				0.74	-0.02
2.x.x - Measurement	7	379	72	28	0				0.78	0.02	183,647	74	26	0				0.81	-0.03
3.x.x - Geometry	18	824	78	22	0				0.86	0.01	400,848	81	18	0				0.85	0.01
4.x.x - Data Analysis & Probabilit	8	395	86	14	0				0.66	0.02	192,126	85	15	0				0.69	-0.03
5.x.x - Algebraic Thinking	11	448	66	34	0				0.79	0.02	217,089	69	31	0				0.78	0.01



**2008-2009**  
**INTERIM PERFORMANCE REPORT**  
**MATHEMATICS CORE CONTENT**

School: Southern Elementary School  
 District: Pulaski County  
 Code: 501570  
 Grade: 04

	No. Items	No. Observations	SCHOOL								Std. Err.	No. Observations	STATE						School -State Mean
			B	0	1	2	3	4	Mean	B			0	1	2	3	4	Mean	
<b>OPEN RESPONSE</b>																			
1.x.x - Number Prop Oper	4	133	0	9	22	37	17	16	2.1	0.1	73,656	0	17	24	29	19	12	1.9	0.2
2.x.x - Measurement	1	15	0	27	13	20	20	20	1.9	0.4	8,195	0	43	13	10	20	13	1.5	0.4
3.x.x - Geometry	2	102	0	15	25	9	21	31	2.3	0.1	57,352	0	11	20	17	19	33	2.4	-0.1
4.x.x - Data Analysis & Probabilit	1	11	0	9	27	27	18	18	2.1	0.3	8,152	0	5	36	29	23	6	1.9	0.2
5.x.x - Algebraic Thinking	2	102	0	4	25	34	31	6	2.1	0.1	57,508	0	5	27	32	25	11	2.1	0.0
<b>MULTIPLE CHOICE</b>																			
1.x.x - Number Prop Oper	31	1,176	70	30	0				0.69	0.01	664,194	67	33	0				0.67	0.02
2.x.x - Measurement	7	246	68	32	0				0.68	0.03	139,170	62	38	0				0.62	0.06
3.x.x - Geometry	14	489	78	22	0				0.78	0.02	278,460	77	23	0				0.77	0.01
4.x.x - Data Analysis & Probabilit	12	538	75	25	0				0.75	0.02	303,394	71	29	0				0.71	0.04
5.x.x - Algebraic Thinking	11	452	73	27	0				0.73	0.02	253,829	69	31	0				0.69	0.04



**2008-2009**  
**INTERIM PERFORMANCE REPORT**  
**MATHEMATICS CORE CONTENT**

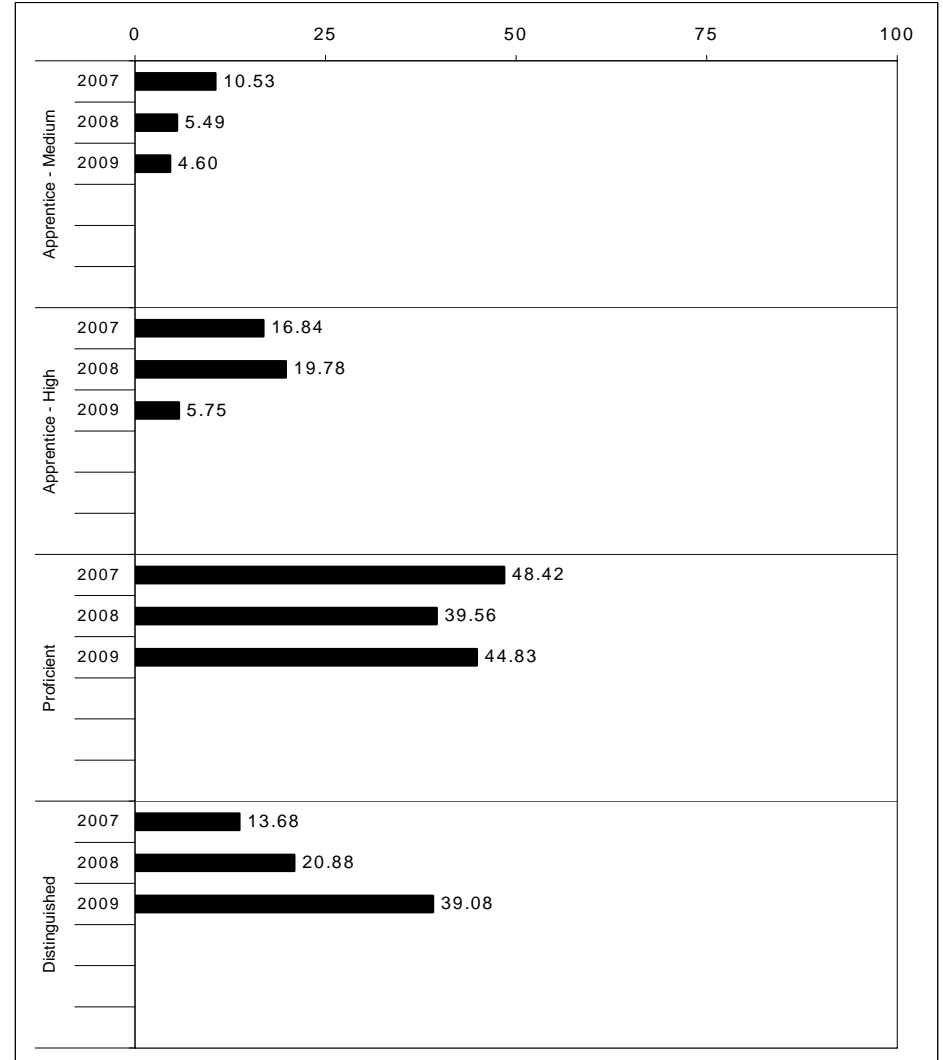
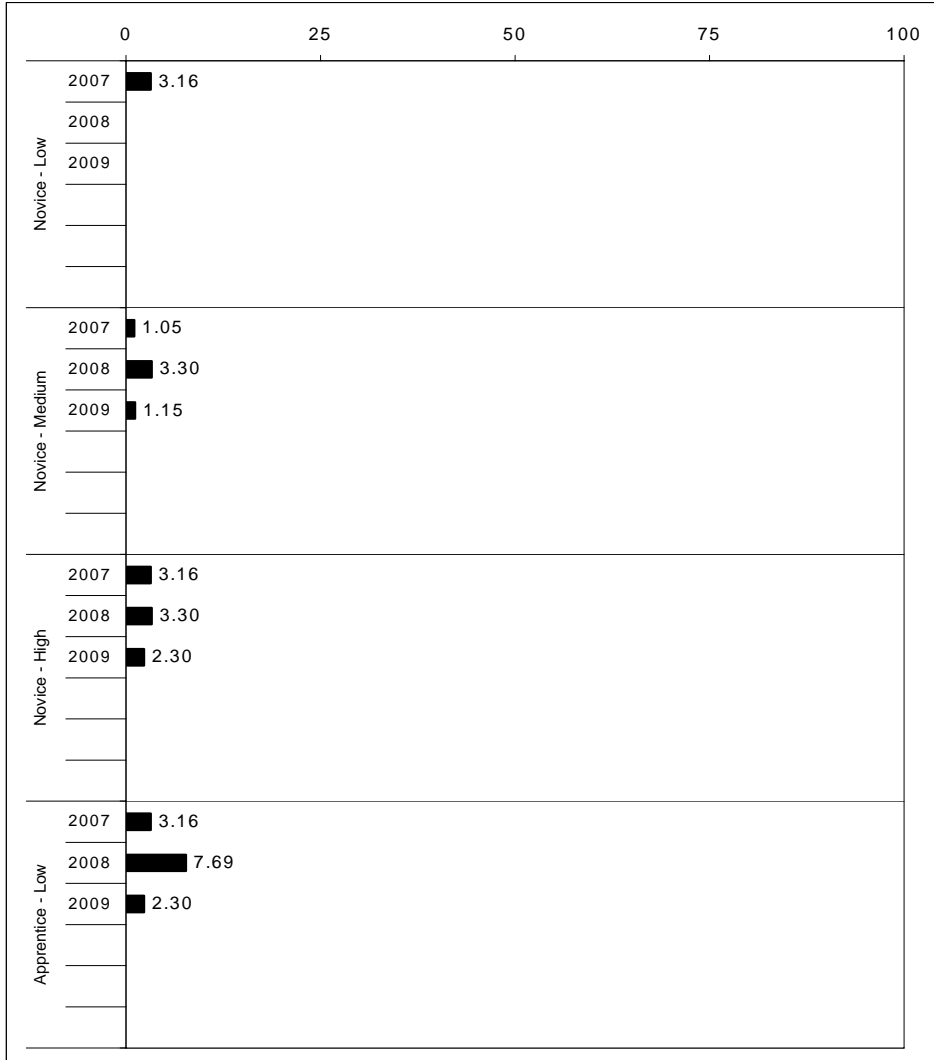
School: Southern Elementary School  
 District: Pulaski County  
 Code: 501570  
 Grade: 05

	No. Items	No. Observations	SCHOOL								Std. Err.	No. Observations	STATE								School -State Mean
			B	0	1	2	3	4	Mean	B			0	1	2	3	4	Mean			
<b>OPEN RESPONSE</b>																					
1.x.x - Number Prop Oper	4	131	0	6	19	23	18	34	2.5	0.1	73,199	0	8	20	18	25	29	2.5	0.0		
2.x.x - Measurement	1	14	0	7	50	14	21	7	1.7	0.4	8,380	0	37	30	13	10	11	1.3	0.4		
3.x.x - Geometry	2	107	0	6	23	35	26	10	2.1	0.1	56,900	0	6	24	30	26	14	2.2	-0.1		
4.x.x - Data Analysis & Probabilit	1	89	0	20	17	17	18	28	2.2	0.2	48,828	0	15	18	15	17	35	2.4	-0.2		
5.x.x - Algebraic Thinking	1	15	0	33	13	20	7	27	1.8	0.4	8,005	0	13	15	20	17	35	2.5	-0.7		
<b>MULTIPLE CHOICE</b>																					
1.x.x - Number Prop Oper	29	1,171	67	33	0				0.67	0.01	643,144	63	37	0				0.63	0.04		
2.x.x - Measurement	9	282	64	36	0				0.64	0.03	154,489	62	38	0				0.62	0.02		
3.x.x - Geometry	14	502	82	18	0				0.82	0.02	276,516	78	22	0				0.78	0.04		
4.x.x - Data Analysis & Probabilit	11	463	65	35	0				0.65	0.02	252,212	64	36	0				0.64	0.01		
5.x.x - Algebraic Thinking	10	445	65	35	0				0.65	0.02	244,140	65	35	0				0.65	0.00		



2008-2009  
**INTERIM PERFORMANCE REPORT**  
**SCIENCE TREND DATA**  
**Performance Level Percents**

School: Southern Elementary School  
 District: Pulaski County  
 Code: 501570  
 Grade: 04



The horizontal bar represents the percent of students scoring at a performance level within a particular year. Percentages may not sum to 100% due to rounding.



**2008-2009  
INTERIM PERFORMANCE REPORT  
SCIENCE DISAGGREGATION  
Performance Level Percents**

School: Southern Elementary School  
District: Pulaski County  
Code: 501570  
Grade: 04

		0%	10%	20%	30%	40%	50%	60%	70%	80%	90%	100%	N%	A%	P%	D%	P+D%		
All Students	Tested	3	11	46				39											
	100 Days	3	13	45				39											
Female	Tested	2	10	54				34											
	100 Days	3	10	54				33											
Male	Tested	4	13	40				44											
	100 Days	4	15	38				44											
White (Non-Hispanic)	Tested	4	10	46				41											
	100 Days	4	11	44				41											
African-American	Tested																		
	100 Days																		
Hispanic	Tested																		
	100 Days																		
Asian	Tested																		
	100 Days																		
Migrant	Tested																		
	100 Days																		
Identified LEP	Tested																		
	100 Days																		
Free/Reduced Lunch Approved	Tested	3	16	52				29											
	100 Days	4	18	51				28											
Disability	Tested	7	25	39				29											
	100 Days	10	24	38				28											

Tested Students		N%	A%	P%	D%	P+D%
Total		3	11	46	39	85.39
Female		2	10	54	34	87.80
Male		4	13	40	44	83.33
White (Non-Hispanic)		4	10	46	41	86.75
African-American	Unreportable*					
Hispanic	Unreportable*					
Asian						
Other						
Title I		3	11	46	39	85.39
Migrant	Unreportable*					
Identified LEP	Unreportable*					
Extended Sch Services	Unreportable*					
Gifted/Talented		0	3	21	76	96.55
F/R Lunch Approved		3	16	52	29	81.03
Vocational/2 Credits						
Disability		7	25	39	29	67.86
Alternate Assessment						
<b>100 Day Students</b>						
Total		3	13	45	39	83.91
Female		3	10	54	33	87.18
Male		4	15	38	44	81.25
White (Non-Hispanic)		4	11	44	41	85.19
African-American	Unreportable*					
Hispanic	Unreportable*					
Asian						
Other						
Title I		3	13	45	39	83.91
Migrant	Unreportable*					
Identified LEP	Unreportable*					
Extended Sch Services	Unreportable*					
Gifted/Talented		0	4	21	75	96.43
F/R Lunch Approved		4	18	51	28	78.95
Vocational/2 Credits						
Disability		10	24	38	28	65.52
Alternate Assessment						

■ Novice
■ Apprentice
■ Proficient
■ Distinguished

Percentage may not sum to 100% due to rounding. 'Unreportable\*' indicates subpopulations with fewer than 10 students or subpopulations where all students score at the same performance level.



**2008-2009**  
**INTERIM PERFORMANCE REPORT**  
**SCIENCE CORE CONTENT**

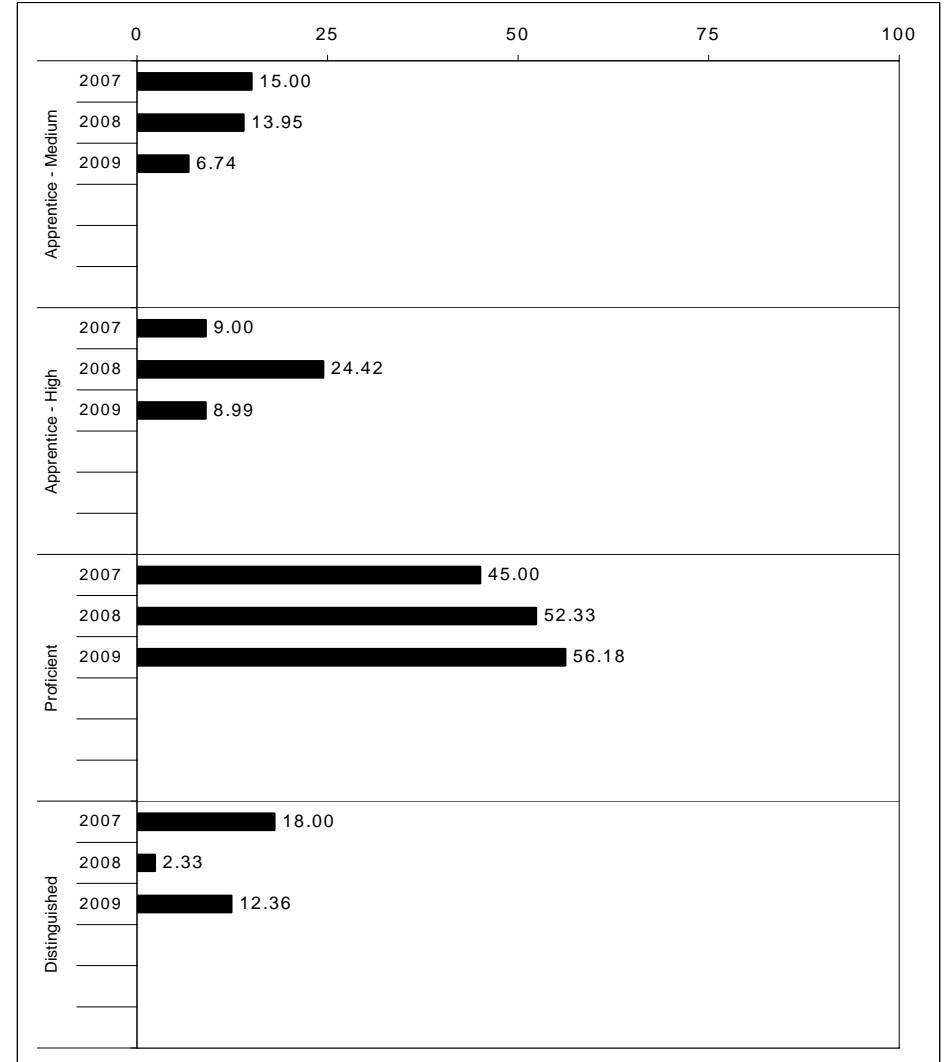
School: Southern Elementary School  
 District: Pulaski County  
 Code: 501570  
 Grade: 04

	No. Items	No. Observations	SCHOOL							Mean	Std. Err.	No. Observations	STATE						Mean	School -State Mean
			B	0	1	2	3	4	B				0	1	2	3	4			
<b>OPEN RESPONSE</b>																				
1.x.x - Physical Science	2	26	0	4	15	35	35	12	2.3	0.2	16,337	0	17	19	42	17	5	1.7	0.6	
2.x.x - Earth Space Science	3	119	0	6	18	32	40	3	2.2	0.1	65,658	0	12	22	35	26	4	1.9	0.3	
3.x.x - Biological Science	3	116	0	3	8	18	34	37	2.9	0.1	65,506	0	2	11	33	44	9	2.5	0.4	
4.x.x - Unifying Concepts	2	102	0	0	11	43	29	17	2.5	0.1	57,508	0	3	13	33	35	15	2.5	0.0	
<b>MULTIPLE CHOICE</b>																				
1.x.x - Physical Science	18	696	Correct	Incorrect	Omit/Mult				0.85	0.01	393,336	Correct	Incorrect	Omit/Mult				0.81	0.04	
2.x.x - Earth Space Science	19	707	85	15	0				0.70	0.02	401,488	71	29	0				0.71	-0.01	
3.x.x - Biological Science	22	829	70	30	0				0.81	0.01	467,138	78	22	0				0.78	0.03	
4.x.x - Unifying Concepts	14	563	81	19	0				0.87	0.02	319,534	84	15	0				0.84	0.03	



2008-2009  
**INTERIM PERFORMANCE REPORT**  
**SOCIAL STUDIES TREND DATA**  
**Performance Level Percents**

School: Southern Elementary School  
 District: Pulaski County  
 Code: 501570  
 Grade: 05

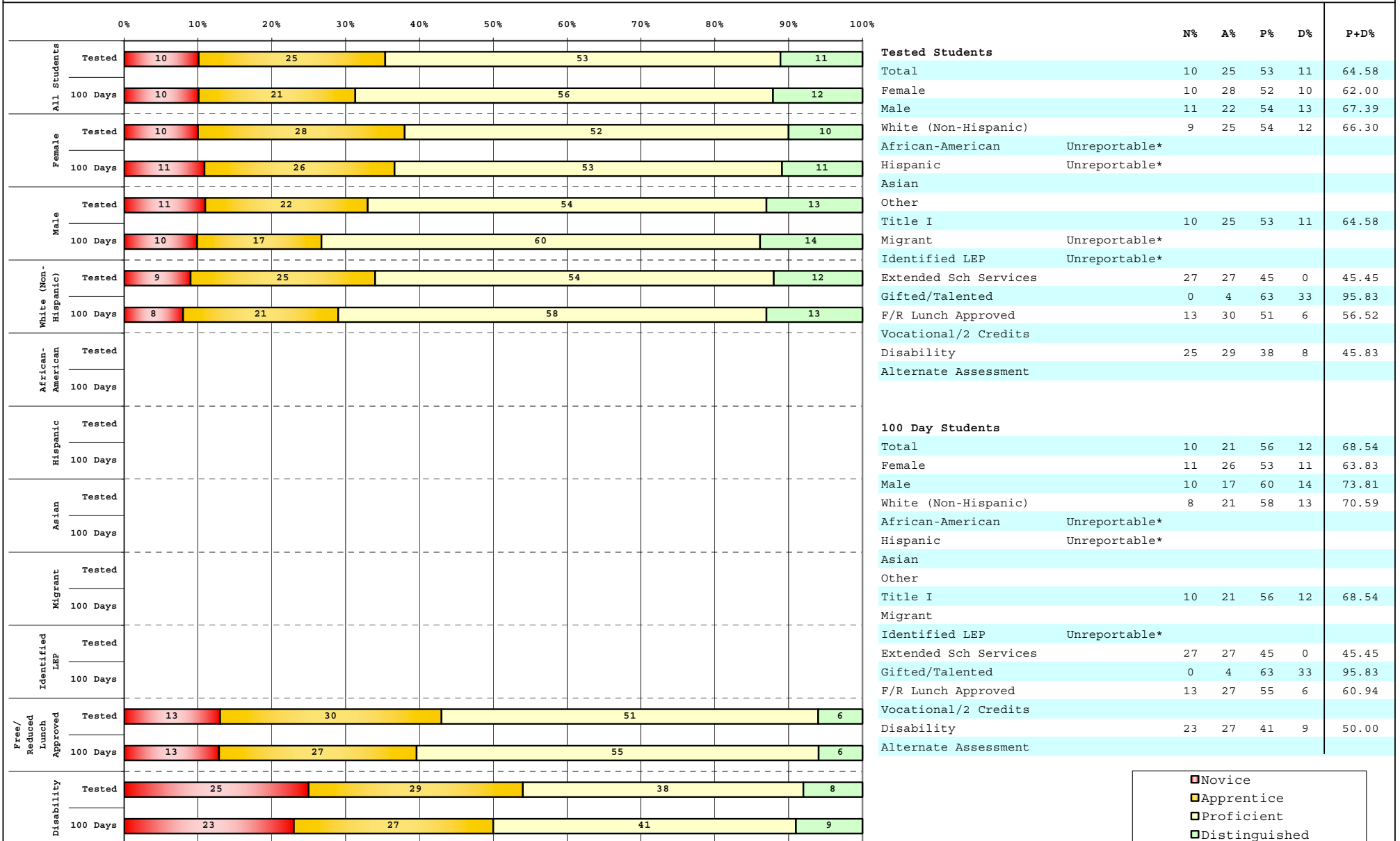


The horizontal bar represents the percent of students scoring at a performance level within a particular year. Percentages may not sum to 100% due to rounding.



2008-2009  
**INTERIM PERFORMANCE REPORT**  
**SOCIAL STUDIES DISAGGREGATION**  
**Performance Level Percents**

School: Southern Elementary School  
 District: Pulaski County  
 Code: 501570  
 Grade: 05



<span style="color: red;">■</span>	Novice
<span style="color: orange;">■</span>	Apprentice
<span style="color: yellow;">■</span>	Proficient
<span style="color: green;">■</span>	Distinguished

Percentage may not sum to 100% due to rounding. 'Unreportable\*' indicates subpopulations with fewer than 10 students or subpopulations where all students score at the same performance level.



**2008-2009**  
**INTERIM PERFORMANCE REPORT**  
**SOCIAL STUDIES CORE CONTENT**

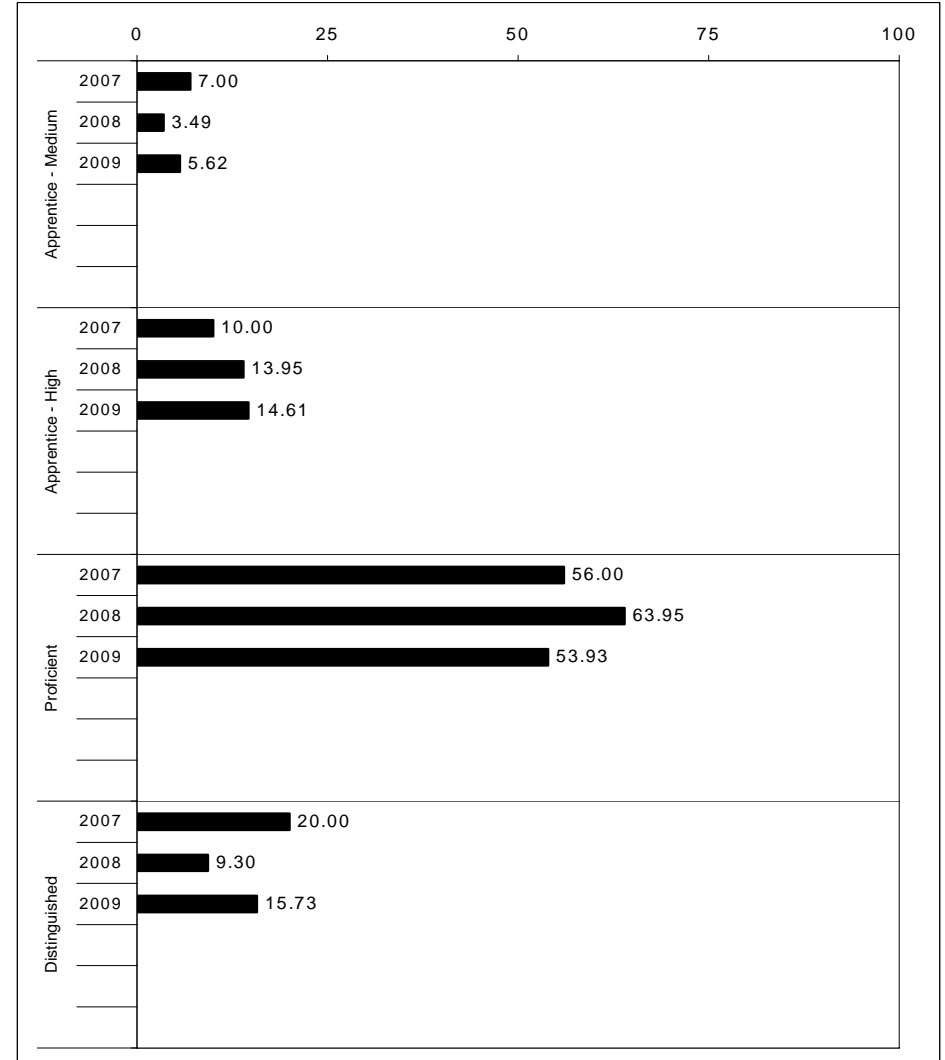
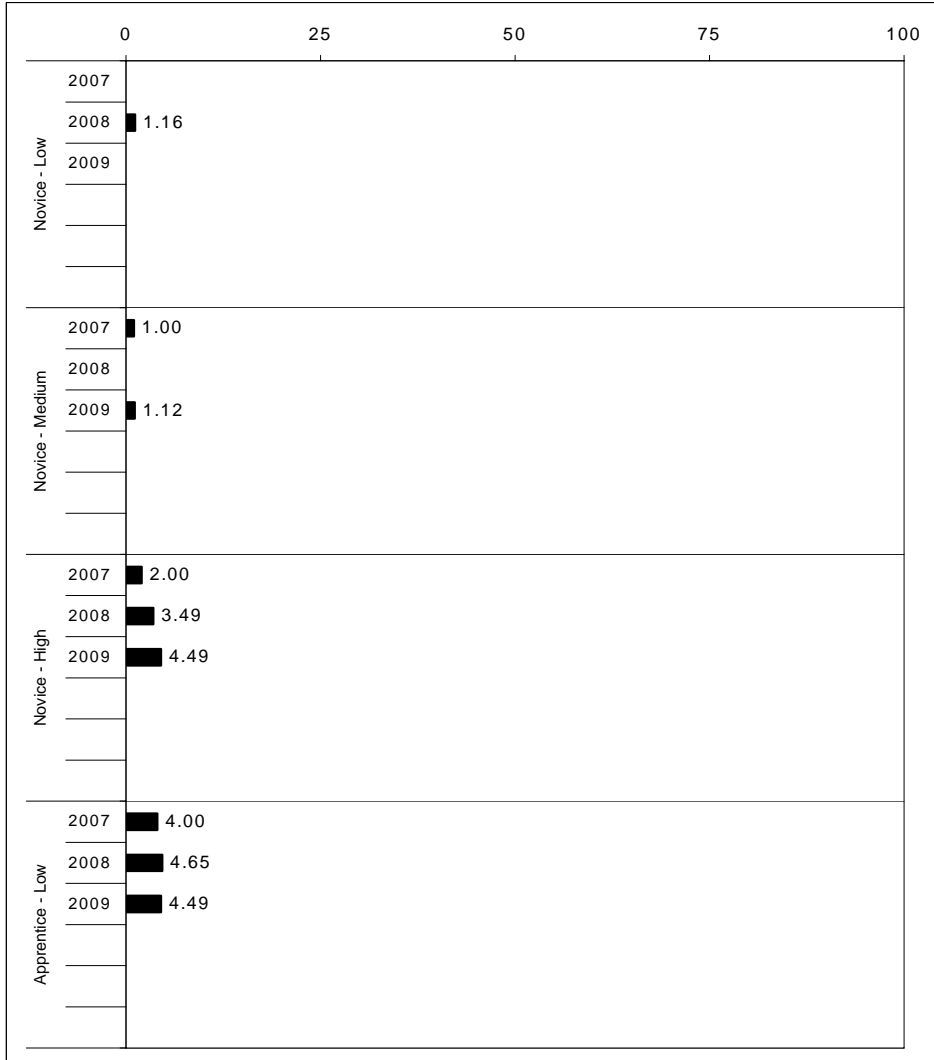
School: Southern Elementary School  
 District: Pulaski County  
 Code: 501570  
 Grade: 05

	No. Items	No. Observations	SCHOOL							Mean	Std. Err.	No. Observations	STATE							Mean	School -State Mean
			B	0	1	2	3	4	B				0	1	2	3	4				
<b>OPEN RESPONSE</b>																					
1.x.x - Government & Civics	2	102	0	4	39	46	9	2	1.7	0.1	56,903	0	5	37	45	10	2	1.7	0.0		
2.x.x - Cultures & Societies	1	17	0	0	18	82	0	0	1.8	0.2	8,151	0	4	21	56	15	4	1.9	-0.1		
3.x.x - Economics	1	89	0	16	33	36	12	3	1.6	0.1	48,828	0	11	33	41	12	3	1.6	0.0		
4.x.x - Geography	2	33	0	12	36	33	18	0	1.6	0.2	16,077	0	9	32	39	17	3	1.7	-0.1		
5.x.x - Historical Perspective	3	115	0	3	26	61	9	1	1.8	0.1	65,353	0	7	35	46	10	2	1.7	0.1		
<b>MULTIPLE CHOICE</b>																					
1.x.x - Government & Civics	14	583	67	33	0				0.67	0.02	317,571	66	34	0				0.66	0.01		
2.x.x - Cultures & Societies	11	384	68	32	0				0.68	0.02	211,383	70	30	0				0.69	-0.01		
3.x.x - Economics	11	458	76	24	0				0.76	0.02	252,215	73	27	0				0.73	0.03		
4.x.x - Geography	16	684	66	34	0				0.66	0.02	374,337	66	34	0				0.66	0.00		
5.x.x - Historical Perspective	27	1,065	69	31	0				0.69	0.01	586,076	69	31	0				0.69	0.00		



2008-2009  
**INTERIM PERFORMANCE REPORT**  
**WRITING ON-DEMAND TREND DATA**  
**Performance Level Percents**

School: Southern Elementary School  
 District: Pulaski County  
 Code: 501570  
 Grade: 05

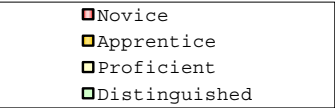
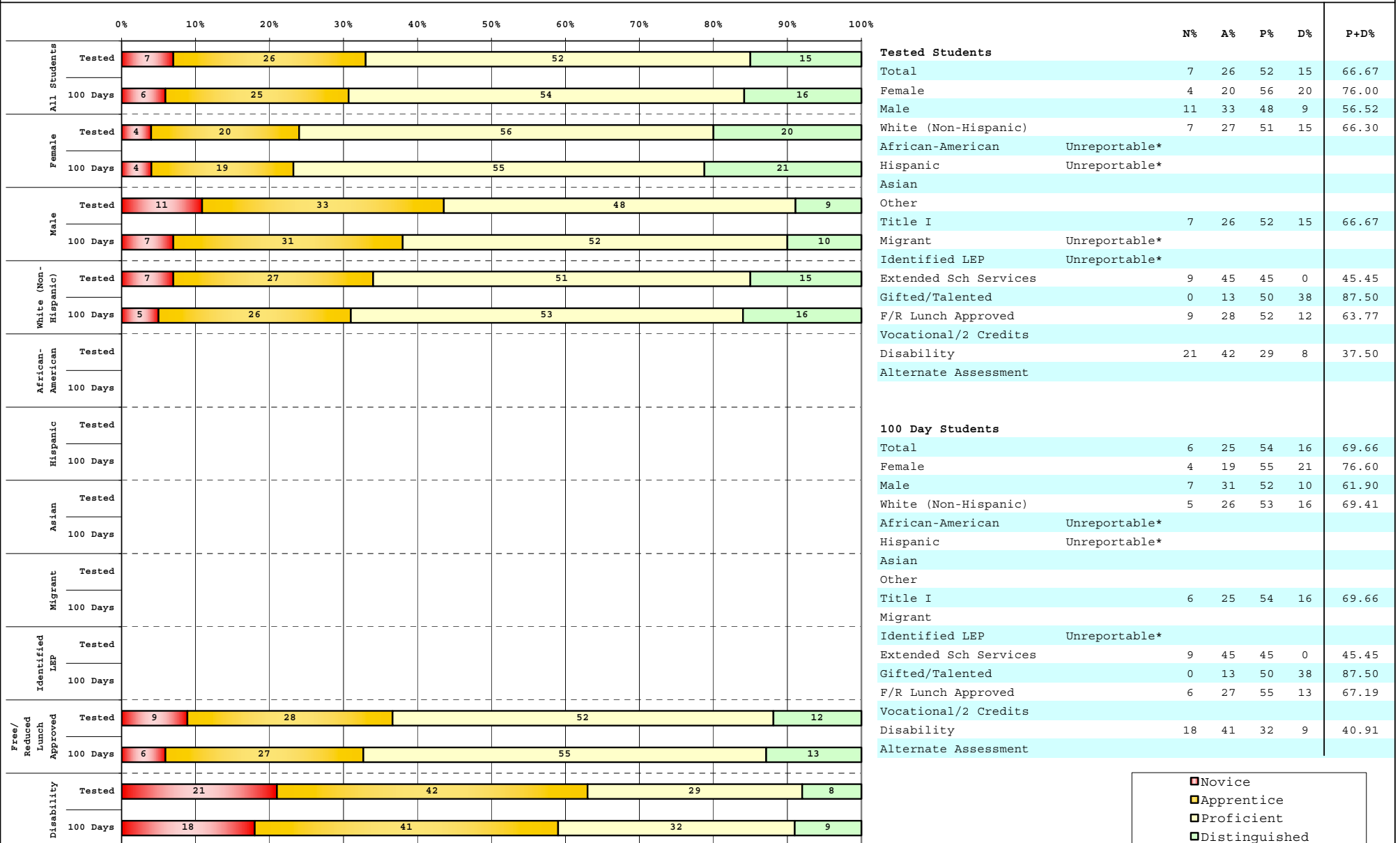


The horizontal bar represents the percent of students scoring at a performance level within a particular year. Percentages may not sum to 100% due to rounding.



2008-2009  
**INTERIM PERFORMANCE REPORT**  
**WRITING ON-DEMAND DISAGGREGATION**  
**Performance Level Percents**

School: Southern Elementary School  
 District: Pulaski County  
 Code: 501570  
 Grade: 05



Percentage may not sum to 100% due to rounding. 'Unreportable\*' indicates subpopulations with fewer than 10 students or subpopulations where all students score at the same performance level.



**2008-2009**  
**INTERIM PERFORMANCE REPORT**  
**WRITING ON-DEMAND CORE CONTENT**

School: Southern Elementary School  
 District: Pulaski County  
 Code: 501570  
 Grade: 05

WRITING PROMPT	SCHOOL												STATE												School -State Mean
	No. Observations	Percents											Mean	Percents											
	B	0	1	2	3	4	5	6	7	8		B		0	1	2	3	4	5	6	7	8			
Inform																									
1.X.X - Content	31	0	3	6	3	0	39	23	23	0	3	4.42	0	1	1	9	9	34	18	21	4	2	4.43	-0.01	
2.X.X - Structure	31	0	3	0	10	0	45	23	16	3	0	4.32	0	1	2	9	10	35	19	19	3	1	4.33	-0.01	
3.X.X - Convention	31	0	0	0	13	3	39	19	23	0	3	4.48	0	0	0	12	11	34	19	19	3	1	4.38	0.10	
Narrate for a purpose																									
1.X.X - Content	29	0	0	0	3	17	17	31	28	3	0	4.72	0	1	1	10	9	36	18	21	3	1	4.35	0.37	
2.X.X - Structure	29	0	0	0	10	10	21	28	28	3	0	4.62	0	1	2	10	10	37	17	19	3	1	4.27	0.35	
3.X.X - Convention	29	0	0	0	10	10	24	24	28	3	0	4.59	0	0	0	12	10	36	18	19	3	1	4.33	0.26	
Persuade																									
1.X.X - Content	29	0	3	0	7	3	31	31	24	0	0	4.48	0	1	1	8	8	33	19	21	5	3	4.50	-0.02	
2.X.X - Structure	29	0	3	0	3	7	34	28	24	0	0	4.48	0	2	2	9	10	33	19	20	5	2	4.42	0.06	
3.X.X - Convention	29	0	0	0	7	3	38	28	24	0	0	4.59	0	0	0	11	10	32	19	20	5	2	4.50	0.09	

MULTIPLE CHOICE	No. Items	SCHOOL						STATE						School -State Mean
		No. Observations	Percents			Mean	Std. Err.	No. Observations	Percents			Mean		
		Correct	Incorrect	Omit/Mult					Correct	Incorrect	Omit/Mult			
4.x.x - Writing Process	52	1,068	80	20	0	0.80	0.01	585,936	73	27	0	0.73	0.07	
4.10.x - Revising	16	234	70	30	0	0.70	0.03	130,317	66	34	0	0.66	0.04	
4.11.x - Editing	36	834	83	17	0	0.83	0.01	455,619	75	24	0	0.75	0.08	