

# 2015-2016 School Report Card Summary

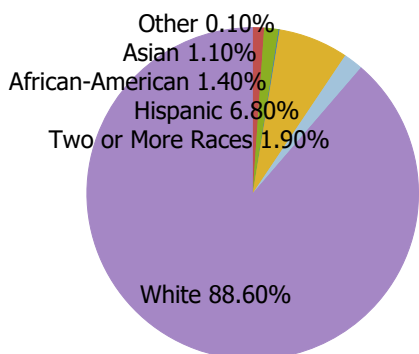
12/1/2016

## Southern Elementary School

198 Enterprise Dr  
Somerset, KY 42501  
Pulaski County Schools  
<http://www.pulaski.net/>

Floyd Patrick, Principal  
(606) 678-5229  
Grade Range: Entry - 5th Grade  
Total Students: 702  
Steve Butcher, Superintendent

### Student Race



### Quick Facts

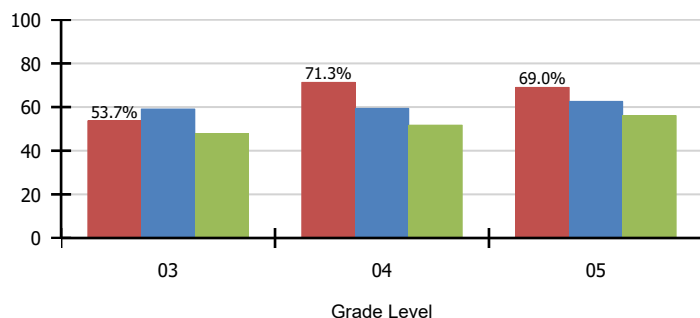
Measure	School	District	State
Per Pupil Expenditures (Unaudited)	NA	\$5,703	\$5,883
Student-Teacher Ratio	16:1	16:1	15:1
Total Teachers	44	482	42,040
National Board Certified Teachers	1	8	2,849
First Year and KTIP Teachers	5.6%	5.1%	6.9%
Teacher Turnover	11.4%	11.4%	17.8%
Lunch Status (Percent Free/Reduced)	73.2%	67.5%	60.2%

For more information visit the full School Report Card Website  
<http://applications.education.ky.gov/SRC>

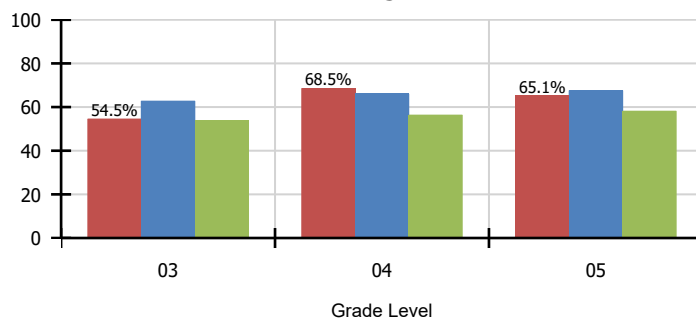
### Performance of Tested Students

Percent of Students Proficient/Distinguished

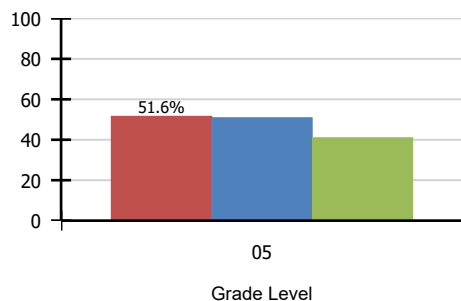
#### Mathematics



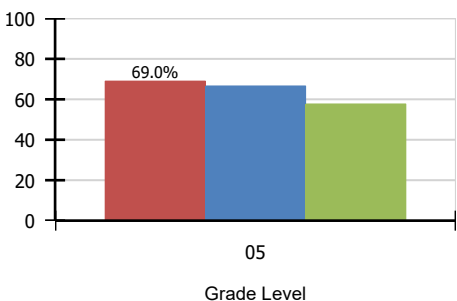
#### Reading



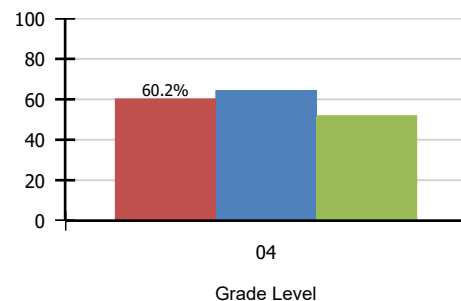
#### Writing



#### Social Studies



#### Language Mechanics



■ SCHOOL ■ DISTRICT ■ STATE

### Indicators of Students' Future Success

Measure	School	District	State
Attendance Rate	95.1%	94.9%	94.5%
Graduation Rate	NA	97.7%	88.6%
College and/or Career Ready	NA	84.0%	68.5%
Dropout Rate	NA	.3%	1.5%
Average ACT Composite	NA	19.7	19.5
AP Qualifying Scores (3 or above)	NA	34.53%	49.69%

### Career Pathways Available in the District

Administrative Support; Agribusiness Systems; Agricultural Power Structural Technical Systems; Animal Science Systems; Army JROTC; Business Management; Business Multimedia; Business Technology; Consumer & Family Management; Culinary & Food Services; Early Childhood Education; Engineering & Technology Design; Environmental Science/Natural Resources Systems; Finance; Financial Services (Marketing); Horticulture and Plant Science Systems; Hospitality; Travel; Tourism & Recreation; Information Processing; Management Entrepreneurship; Marketing; Network Administration; PLTW Biomedical Sciences; Project Lead The Way (PLTW) - Engineering; Retail/Wholesaling; Sports Marketing; Web Design For Business

## School Report Card Summary – description of data elements.

Label	Description – additional detail is available in the SRC Glossary <a href="http://applications.education.ky.gov/SRC/Glossary.aspx">http://applications.education.ky.gov/SRC/Glossary.aspx</a>
School Demographics and Contact information	School principal, superintendent and other contact information as of the date the School Report Card is published, not the year the card represents.
Grade Range	Lowest to highest grade in the school building.
Total Students	All enrollments minus all withdrawals for grades K-12 as reported to the Kentucky Department of Education as "membership" by the local superintendent at the close of school year.
Student Race	Individual race category as self-reported by the student, parent or guardian or observed by someone in the school. Includes Hispanic, African American, Asian, Other (American Indian or Alaska Native, Native Hawaiian or other Pacific Islander), White (not Hispanic), or two or more races as reported to the Kentucky Department of Education by the local superintendent at the close of school year.
Per Pupil Expenditure (Unaudited)	Calculated expenditures on instruction per pupil as reported in the Finance tab of the School Report Card under Revenue and Expenditures. These are unaudited numbers available at district and state level only.
Student-Teacher Ratio	Total students "membership" as of June 30 divided by the number of teachers on a full-time equivalent (FTE) basis, not including administrators, guidance counselors, media specialists or resource teachers.
Total Teachers	All teachers as of Sept. 15 each school year. It does not include administrators, guidance counselors, media specialists or resource teachers.
National Board Certified Teachers	The number of teachers certified by the National Board for Professional Teaching Standards ( <a href="http://www.nbpts.org">www.nbpts.org</a> ), as reported by the Education Professional Standards Board.
First Year and KTIP Teachers	Total percent of first year and Kentucky Teacher Internship Program (KTIP) teachers in the school, district or state. Includes those teachers who did not teach in Kentucky the previous year and all KTIP teachers.
Teacher Turnover	Teachers who left the classroom within a school regardless of whether re-employed at the same school in a nonteaching role, in another district, moved within district, left the Kentucky public school system or retired.
Lunch Status (percent free and reduced)	Indicates the percentage of students' receiving free or reduced-priced meals based on income eligibility.
School Report Card website	Full website includes more information on schools, districts and state. Data sets are available to allow for viewing multiple schools simultaneously.
Performance of Tested Students	Percentage of students meeting proficient and distinguished levels and benchmarks on state assessments by grade level or high school (HS). District numbers are suppressed when necessary to protect student identification.
Mathematics	Percentage of students testing at or above the Proficient level on state assessment for mathematics that includes KPREP for grades 3-8 and the Algebra II End-of-Course exam at the high school level.
Reading	Percentage of students testing at or above the Proficient level on state assessment for reading that includes KPREP for grades 3-8 and the English II End-of-Course exam at the high school level.
Social Studies	Percentage of students testing at or above the Proficient level on state assessment for social studies that includes KPREP for grades 5, 8 and the U.S. History End-of-Course exam at the high school level.
Language Mechanics	Percentage of students testing at or above the Proficient level on state assessment for language mechanics that includes KPREP for grades 4, 6 and the ACT English Usage/Mechanics sub score at high school.
Writing	Percentage of students testing at or above the Proficient level on state assessment for On Demand writing that includes KPREP for grades 5, 6, 8 and grades 10-11 End-of-Course exam at the high school.
Science	National percentiles for science are generated from the Stanford Achievement Test (SAT 10). It is the norm-referenced portion of the K-PREP for science in grades 4 and 7. Percentage of students testing at or above the Proficient level on state assessment for the Biology End-of-Course exam at the high school level.
ACT (Benchmarks)	Percent of students meeting the Kentucky Council on Postsecondary Education's (CPE's) college readiness benchmarks on the ACT (18 on English, 19 on mathematics, 20 on reading).
Attendance Rate	Reflects the proportion of students in attendance during the school year. The percentage is calculated by the sum of present days for all students divided by total present plus absent student days (i.e., Present/(Present + Absent)).
Graduation Rate	Four-year adjusted cohort graduation rate calculated as the number of students who graduate in four years with a regular high school diploma divided by the number of students who entered high school four years earlier.
College and/or Career Ready	Reflects students' college and/or career preparedness based on test scores and certifications earned. Measured by ACT benchmarks, college placement tests and career measures for high school. Students must be enrolled a full academic year (100 days or more) in order to be considered.
Dropout Rate	The dropout rate is calculated by dividing the number of dropouts by the dropout membership x 100. Dropout membership is taken from the growth factor membership report.
Average ACT Composite	Averaged composite score of all subject areas for all students administered the ACT Grade 11 examination.
AP Qualifying Scores	Calculated percentage of Advanced Placement tests taken that result in score of 3, 4 or 5.
Career Pathways Available in the District	A program of study that is a coherent, articulated sequence of rigorous academic and career/technical courses, including dual credit opportunities, that leads to postsecondary degrees and industry-recognized certifications and/or licensures. Career Pathways are developed, implemented and maintained in partnership among secondary and postsecondary institutions, business and employers. They are available to all students.